

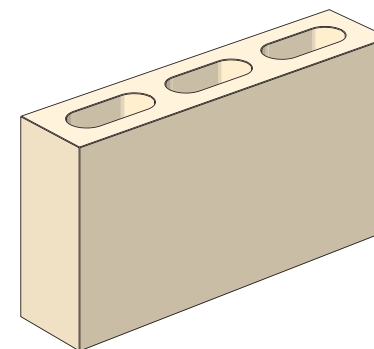
Product Details

range name	SOLITARY
finish	SMOOTH
colours	ASH BEACH CHARCOAL POLAR
product code description	10.01 90MM FULL VENEER

Properties and Specifications

nominal dimensions (length x width x height mm)	400 x 100 x 200mm
actual dimensions (length x width x height mm)	390 x 90 x 190mm
core volume (% overall thickness)	<30
characteristic unconfined compressive strength (MPa)	-
minimum shell thickness (mm)	25
average weight (KG)	11
units per tonne	90
number per pallet	180
number per sqm/lm	12.5
durability class (to AS4456.10 - sodium sulphate and sodium chloride)	GENERAL PURPOSE
wall mass inc mortar hollow	-
Light Reflectance Value	-

Diagram



Fire Resistance Levels

structural adequacy (see notes)	60 to 240
integrity	60
insulation	60

Notes

Maximum slenderness ratio (srf) from AS3700:2018 Table 6.1 is:
18.0 at 60 minutes | 17.0 at 90 minutes
16.0 at 120 minutes | 15.5 at 180 minutes | 15.5 at 240 minutes

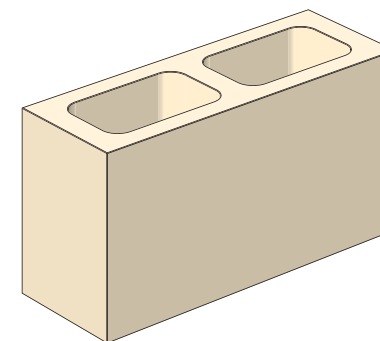
Product Details

range name	SOLITARY
finish	SMOOTH
colours	ASH BEACH CHARCOAL POLAR
product code description	15.01 140MM FULL VENEER

Properties and Specifications

nominal dimensions (length x width x height mm)	400 x 150 x 200mm
actual dimensions (length x width x height mm)	390 x 140 x 190mm
core volume (% overall thickness)	42
characteristic unconfined compressive strength (MPa)	>15
minimum shell thickness (mm)	25
average weight (KG)	14.3
units per tonne	70
number per pallet	120
number per sqm/lm	12.5
durability class (to AS4456.10 - sodium sulphate and sodium chloride)	EXPOSURE
wall mass inc mortar hollow	186
Light Reflectance Value	-

Diagram



Fire Resistance Levels

structural adequacy (see notes)	60 to 240
integrity	60
insulation	60

Notes

Maximum slenderness ratio (srf) from AS3700:2018 Table 6.1 is:
18.0 at 60 minutes | 17.0 at 90 minutes
16.0 at 120 minutes | 15.5 at 180 minutes | 15.5 at 240 minutes

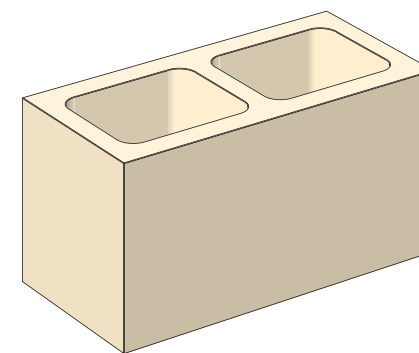
Product Details

range name	SOLITARY
finish	SMOOTH
colours	ASH BEACH CHARCOAL POLAR
product code description	20.01 190MM FULL VENEER

Properties and Specifications

nominal dimensions (length x width x height mm)	400 x 200 x 200mm
actual dimensions (length x width x height mm)	390 x 190 x 190mm
core volume (% overall thickness)	47
characteristic unconfined compressive strength (MPa)	>15
minimum shell thickness (mm)	30
average weight (KG)	15.6
units per tonne	64
number per pallet	90
number per sqm/lm	12.5
durability class (to AS4456.10 - sodium sulphate and sodium chloride)	EXPOSURE
wall mass inc mortar hollow	204
Light Reflectance Value	-

Diagram



Fire Resistance Levels

structural adequacy (see notes)	60 to 240
integrity	60
insulation	60

Notes

Maximum slenderness ratio (srf) from AS3700:2018 Table 6.1 is:
18.0 at 60 minutes | 17.0 at 90 minutes
16.0 at 120 minutes | 15.5 at 180 minutes | 15.5 at 240 minutes

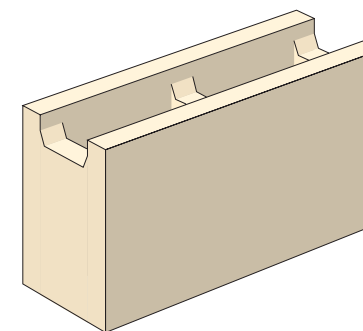
Product Details

range name	SOLITARY
finish	SMOOTH
colours	ASH BEACH CHARCOAL POLAR
product code description	15.42 140MM RECESSED WEB OR CHANNEL

Properties and Specifications

nominal dimensions (length x width x height mm)	400 x 150 x 200mm
actual dimensions (length x width x height mm)	390 x 140 x 190mm
core volume (% overall thickness)	41
characteristic unconfined compressive strength (MPa)	>15
minimum shell thickness (mm)	25
average weight (KG)	11.1
units per tonne	90
number per pallet	144
number per sqm/lm	12.5
durability class (to AS4456.10 - sodium sulphate and sodium chloride)	EXPOSURE
wall mass inc mortar hollow	146
wall mass inc grouted solid	-
Light Reflectance Value	-

Diagram



Fire Resistance Levels

structural adequacy (see notes*)	60 to 240
integrity	HOLLOW 60 CORE FILLED 120
insulation	HOLLOW 60 CORE FILLED 120

Notes

Maximum slenderness ratio (srf) hollow masonry
from AS3700:2018 Table 6.1 is:

18.0 at 60 minutes | 17.0 at 90 minutes

16.0 at 120 minutes | 15.5 at 180 minutes | 15.5 at 240 minutes

This data represents average results from production lots based on the results achieved by samples selected at random for testing. Figures are accurate at date of publication and subject to change without notice. Contact us for confirmation of product specification. Tested as per AS/NZS 4455.1: 2008 and 4456: 2003. Fire resistance levels as per AS3700: 2018. Acoustic opinion derived from Day Design Pty Ltd. 2012. Tested in accordance with AS 1191:1001 and AS/NZS 1276.1:1999.

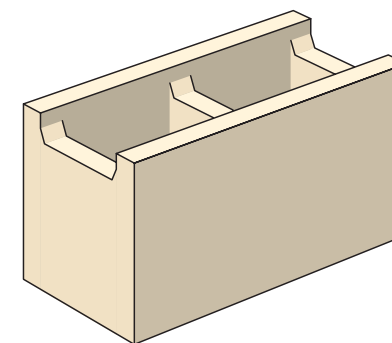
Product Details

range name	SOLITARY
finish	SMOOTH
colours	ASH BEACH CHARCOAL POLAR
product code description	20.42 190MM RECESSED WEB OR CHANNEL

Properties and Specifications

nominal dimensions (length x width x height mm)	400 x 200 x 200mm
actual dimensions (length x width x height mm)	390 x 190 x 190mm
core volume (% overall thickness)	48
characteristic unconfined compressive strength (MPa)	>15
minimum shell thickness (mm)	30
average weight (KG)	15.6
units per tonne	64
number per pallet	90
number per sqm/lm	12.5
durability class (to AS4456.10 - sodium sulphate and sodium chloride)	EXPOSURE
wall mass inc mortar hollow	204
wall mass inc grouted solid	400
Light Reflectance Value	-

Diagram



Fire Resistance Levels^

structural adequacy (see notes)	60 to 240
integrity	HOLLOW 60 CORE FILLED 240
insulation	HOLLOW 60 CORE FILLED 240

Notes

Maximum slenderness ratio (srf) unreinforced masonry
from AS3700:2018 Table 6.1 is:

18.0 at 60 minutes | 17.0 at 90 minutes

16.0 at 120 minutes | 15.5 at 180 minutes | 15.5 at 240 minutes

This data represents average results from production lots based on the results achieved by samples selected at random for testing. Figures are accurate at date of publication and subject to change without notice. Contact us for confirmation of product specification. Tested as per AS/NZS 4455.1: 2008 and 4456: 2003. Fire resistance levels as per AS3700: 2018. Acoustic opinion derived from Day Design Pty Ltd. 2012. Tested in accordance with AS 1191:1001 and AS/NZS 1276.1:1999.

^When reinforced and Srf <36: 240 minutes

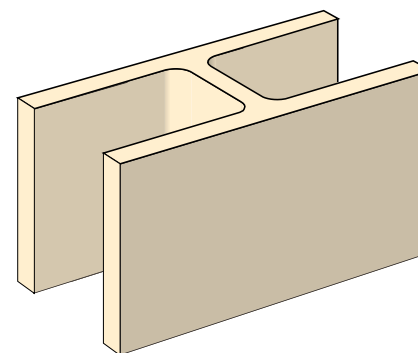
Product Details

range name	SOLITARY
finish	SMOOTH
colours	ASH BEACH CHARCOAL POLAR
product code description	30.48 290MM H BLOCK

Properties and Specifications

nominal dimensions (length x width x height mm)	400 x 300 x 200mm
actual dimensions (length x width x height mm)	390 x 290 x 190mm
core volume (% overall thickness)	54
characteristic unconfined compressive strength (MPa)	>15
minimum shell thickness (mm)	35
average weight (KG)	22.2
units per tonne	45
number per pallet	60
number per sqm/lm	12.5
durability class (to AS4456.10 - sodium sulphate and sodium chloride)	EXPOSURE
wall mass inc mortar hollow	288
wall mass inc grouted solid	-
Light Reflectance Value	-

Diagram



Fire Resistance Levels^

structural adequacy (see notes)	60 to 240			
integrity	HOLLOW	60	CORE FILLED	240
insulation	HOLLOW	60	CORE FILLED	240

Notes

Maximum slenderness ratio (srf) unreinforced masonry
from AS3700:2018 Table 6.1 is:

18.0 at 60 minutes | 17.0 at 90 minutes

16.0 at 120 minutes | 15.5 at 180 minutes | 15.5 at 240 minutes

This data represents average results from production lots based on the results achieved by samples selected at random for testing. Figures are accurate at date of publication and subject to change without notice. Contact us for confirmation of product specification. Tested as per AS/NZS 4455.1: 2008 and 4456: 2003. Fire resistance levels as per AS3700: 2018. Acoustic opinion derived from Day Design Pty Ltd. 2012. Tested in accordance with AS 1191:1001 and AS/NZS 1276.1:1999.

^When reinforced and Srf <36: 240 minutes

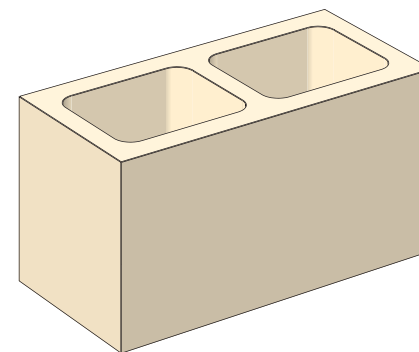
Product Details

range name	SOLITARY
finish	SMOOTH
colours	ASH BEACH CHARCOAL POLAR
product code description	30.01 290MM STANDARD

Properties and Specifications

nominal dimensions (length x width x height mm)	400 x 300 x 200mm
actual dimensions (length x width x height mm)	390 x 290 x 190mm
core volume (% overall thickness)	52
characteristic unconfined compressive strength (MPa)	>15
minimum shell thickness (mm)	40
average weight (KG)	20
units per tonne	50
number per pallet	60
number per sqm/lm	12.5
durability class (to AS4456.10 - sodium sulphate and sodium chloride)	EXPOSURE
wall mass inc mortar hollow	262
wall mass inc grouted solid	-
Light Reflectance Value	-

Diagram



Fire Resistance Levels^

structural adequacy (see notes)	60 to 240
integrity	60
insulation	60

Notes

Maximum slenderness ratio (srf) unreinforced masonry
from AS3700:2018 Table 6.1 is:

18.0 at 60 minutes | 17.0 at 90 minutes

16.0 at 120 minutes | 15.5 at 180 minutes | 15.5 at 240 minutes

This data represents average results from production lots based on the results achieved by samples selected at random for testing. Figures are accurate at date of publication and subject to change without notice. Contact us for confirmation of product specification. Tested as per AS/NZS 4455.1: 2008 and 4456: 2003. Fire resistance levels as per AS3700: 2018. Acoustic opinion derived from Day Design Pty Ltd. 2012. Tested in accordance with AS 1191:1001 and AS/NZS 1276.1:1999.

^When reinforced and Srf <36: 240 minutes

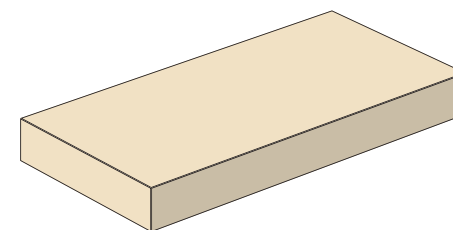
Product Details

range name	SOLITARY
finish	SMOOTH
colours	ASH BEACH CHARCOAL POLAR
product code description	50.31 190MM CAPPING TILE

Properties and Specifications

nominal dimensions (length x width x height mm)	390 x 190 x 40mm
actual dimensions (length x width x height mm)	390 x 190 x 40mm
core volume (% overall thickness)	SOLID
characteristic unconfined compressive strength (MPa)	-
minimum shell thickness (mm)	N/A
average weight (KG)	6.5
units per tonne	154
number per pallet	270-
number per sqm/lm	50 OR 2.5 LM
durability class (to AS4456.10 - sodium sulphate and sodium chloride)	EXPOSURE
wall mass inc mortar hollow	-
Light Reflectance Value	-

Diagram



Fire Resistance Levels

structural adequacy (see notes)	60 to 240
integrity	60
insulation	60

Notes

Maximum slenderness ratio (srf) from AS3700:2018 Table 6.1 is:
18.0 at 60 minutes | 17.0 at 90 minutes
16.0 at 120 minutes | 15.5 at 180 minutes | 15.5 at 240 minutes

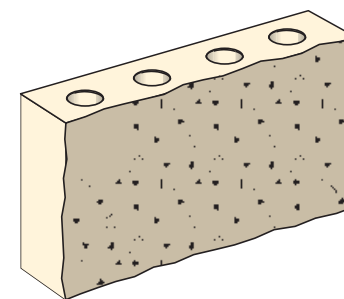
Product Details

range name	SOLITARY
finish	SPLIT FACE
colours	ASH BEACH CHARCOAL POLAR
product code description	10.91 90MM SPLIT FACE FULL STANDARD VENEER

Properties and Specifications

nominal dimensions (length x width x height mm)	400 x 100 x 200mm
actual dimensions (length x width x height mm)	390 x 90 x 190mm
core volume (% overall thickness)	<30
characteristic unconfined compressive strength (MPa)	>15
minimum shell thickness (mm)	24
average weight (KG)	12.2
units per tonne	82
number per pallet	150
number per sqm/lm	12.5
durability class (to AS4456.10 - sodium sulphate and sodium chloride)	GENERAL PURPOSE
wall mass inc mortar hollow	168
wall mass inc grouted solid	-
Light Reflectance Value	-

Diagram



Fire Resistance Levels^

structural adequacy (see notes)	60 to 240
integrity	HOLLOW 60
insulation	HOLLOW 60

Notes

Maximum slenderness ratio (srf) unreinforced masonry from AS3700:2018 Table 6.1 is:

18.0 at 60 minutes | 17.0 at 90 minutes

16.0 at 120 minutes | 15.5 at 180 minutes | 15.5 at 240 minutes

This data represents average results from production lots based on the results achieved by samples selected at random for testing. Figures are accurate at date of publication and subject to change without notice. Contact us for confirmation of product specification. Tested as per AS/NZS 4455.1: 2008 and 4456: 2003. Fire resistance levels as per AS3700: 2018. Acoustic opinion derived from Day Design Pty Ltd. 2012. Tested in accordance with AS 1191:1001 and AS/NZS 1276.1:1999.

^When reinforced and Srf <36: 240 minutes

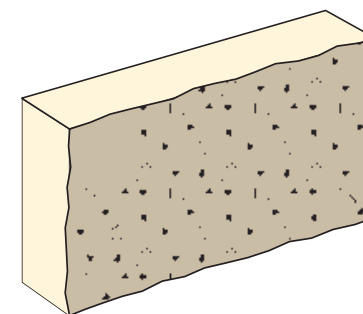
Product Details

range name	SOLITARY
finish	SPLIT FACE
colours	ASH BEACH CHARCOAL POLAR
product code description	10.95 90MM SPLIT FACE FULL VENEER

Properties and Specifications

nominal dimensions (length x width x height mm)	400 x 100 x 200mm
actual dimensions (length x width x height mm)	390 x 90 x 190mm
core volume (% overall thickness)	<30
characteristic unconfined compressive strength (MPa)	>15
minimum shell thickness (mm)	24
average weight (KG)	12.2
units per tonne	82
number per pallet	150
number per sqm/lm	12.5
durability class (to AS4456.10 - sodium sulphate and sodium chloride)	GENERAL PURPOSE
wall mass inc mortar hollow	168
wall mass inc grouted solid	-
Light Reflectance Value	-

Diagram



Fire Resistance Levels^

structural adequacy (see notes)	60 to 240
integrity	60
insulation	60

Notes

Maximum slenderness ratio (srf) unreinforced masonry
from AS3700:2018 Table 6.1 is:

18.0 at 60 minutes | 17.0 at 90 minutes

16.0 at 120 minutes | 15.5 at 180 minutes | 15.5 at 240 minutes

This data represents average results from production lots based on the results achieved by samples selected at random for testing. Figures are accurate at date of publication and subject to change without notice. Contact us for confirmation of product specification. Tested as per AS/NZS 4455.1: 2008 and 4456: 2003. Fire resistance levels as per AS3700: 2018. Acoustic opinion derived from Day Design Pty Ltd. 2012. Tested in accordance with AS 1191:1001 and AS/NZS 1276.1:1999.

^When reinforced and Srf <36: 240 minutes

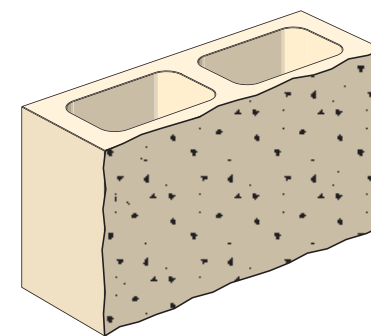
Product Details

range name	SOLITARY
finish	SPLIT FACE
colours	ASH BEACH CHARCOAL POLAR
product code description	15.121 140MM FULL SPLIT FACE STANDARD

Properties and Specifications

nominal dimensions (length x width x height mm)	400 x 150 x 200 mm
actual dimensions (length x width x height mm)	390 x 145 x 190 mm
core volume (% overall thickness)	37
characteristic unconfined compressive strength (MPa)	>15
minimum shell thickness (mm)	30
average weight (KG)	14.3
units per tonne	70
number per pallet	105
number per sqm/lm	12.5
durability class (to AS4456.10 - sodium sulphate and sodium chloride)	EXPOSURE
wall mass inc mortar hollow	188
wall mass inc grouted solid	-
Light Reflectance Value	-

Diagram



Fire Resistance Levels^

structural adequacy (see notes)	60 to 240
integrity	60
insulation	60

Notes

Maximum slenderness ratio (srf) unreinforced masonry
from AS3700:2018 Table 6.1 is:

18.0 at 60 minutes | 17.0 at 90 minutes

16.0 at 120 minutes | 15.5 at 180 minutes | 15.5 at 240 minutes

This data represents average results from production lots based on the results achieved by samples selected at random for testing. Figures are accurate at date of publication and subject to change without notice. Contact us for confirmation of product specification. Tested as per AS/NZS 4455.1: 2008 and 4456: 2003. Fire resistance levels as per AS3700: 2018. Acoustic opinion derived from Day Design Pty Ltd. 2012. Tested in accordance with AS 1191:1001 and AS/NZS 1276.1:1999.

^When reinforced and Srf <36: 240 minutes

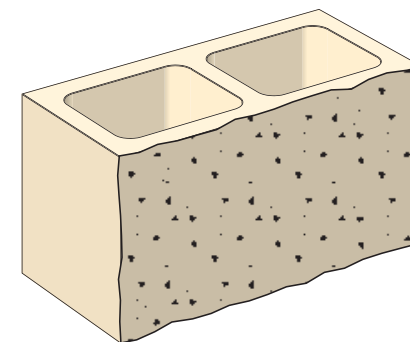
Product Details

range name	SOLITARY
finish	SPLIT FACE
colours	ASH BEACH CHARCOAL POLAR
product code description	20.121 200MM SPLIT FACE FULL

Properties and Specifications

nominal dimensions (length x width x height mm)	400 x 200 x 200mm
actual dimensions (length x width x height mm)	390 x 190 x 190mm
core volume (% overall thickness)	45
characteristic unconfined compressive strength (MPa)	>15
minimum shell thickness (mm)	30
average weight (KG)	16.7
average weight per tonne (KG)	60
number per pallet	90
number per sqm/lm	12.5
durability class (to AS4456.10 - sodium sulphate and sodium chloride)	EXPOSURE
wall mass inc mortar hollow	219
wall mass inc mortar and core fill	-
Light Reflectance Value	-

Diagram



Fire Resistance Levels^

structural adequacy (see notes)	60 to 240
integrity	60
insulation	60

Notes

Maximum slenderness ratio (srf) unreinforced masonry
from AS3700:2018 Table 6.1 is:

18.0 at 60 minutes | 17.0 at 90 minutes

16.0 at 120 minutes | 15.5 at 180 minutes | 15.5 at 240 minutes

This data represents average results from production lots based on the results achieved by samples selected at random for testing. Figures are accurate at date of publication and subject to change without notice. Contact us for confirmation of product specification. Tested as per AS/NZS 4455.1: 2008 and 4456: 2003. Fire resistance levels as per AS3700: 2018. Acoustic opinion derived from Day Design Pty Ltd. 2012. Tested in accordance with AS 1191:1001 and AS/NZS 1276.1:1999.

^When reinforced and Srf <36: 240 minutes

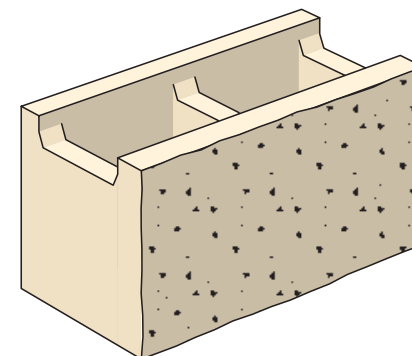
Product Details

range name	SOLITARY
finish	SPLIT FACE
colours	ASH BEACH CHARCOAL POLAR
product code description	20.142 200MM SPLIT FACE RECESSED WEB OR CHANNEL

Properties and Specifications

nominal dimensions (length x width x height mm)	400 x 200 x 200mm
actual dimensions (length x width x height mm)	390 x 190 x 190mm
core volume (% overall thickness)	46
characteristic unconfined compressive strength (MPa)	>15
minimum shell thickness (mm)	30
average weight (KG)	18.2
units per tonne	55
number per pallet	90
number per sqm/lm	12.5
durability class (to AS4456.10 - sodium sulphate and sodium chloride)	EXPOSURE
wall mass inc mortar hollow	238
wall mass inc mortar and core fill	-
Light Reflectance Value	-

Diagram



Fire Resistance Levels^

structural adequacy (see notes)	60 to 240
integrity	60
insulation	60

Notes

Maximum slenderness ratio (srf) unreinforced masonry from AS3700:2018 Table 6.1 is:

18.0 at 60 minutes | 17.0 at 90 minutes

16.0 at 120 minutes | 15.5 at 180 minutes | 15.5 at 240 minutes

This data represents average results from production lots based on the results achieved by samples selected at random for testing. Figures are accurate at date of publication and subject to change without notice. Contact us for confirmation of product specification. Tested as per AS/NZS 4455.1: 2008 and 4456: 2003. Fire resistance levels as per AS3700: 2018. Acoustic opinion derived from Day Design Pty Ltd. 2012. Tested in accordance with AS 1191:1001 and AS/NZS 1276.1:1999.

^When reinforced and Srf <36: 240 minutes

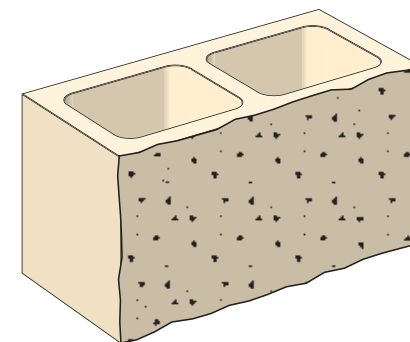
Product Details

range name	SOLITARY
finish	SPLIT FACE
colours	ASH BEACH CHARCOAL POLAR
product code description	20.139 200MM SPLIT FACE CORNER BLOCK

Properties and Specifications

nominal dimensions (length x width x height mm)	400 x 200 x 200mm
actual dimensions (length x width x height mm)	390 x 190 x 190mm
core volume (% overall thickness)	>30
characteristic unconfined compressive strength (MPa)	
minimum shell thickness (mm)	
average weight (KG)	
units per tonne	
number per pallet	
number per sqm/lm	
durability class (to AS4456.10 - sodium sulphate and sodium chloride)	EXPOSURE
wall mass inc mortar hollow	219
wall mass inc mortar and core fill	-
Light Reflectance Value	-

Diagram



Fire Resistance Levels^

structural adequacy (see notes)	60 to 240
integrity	60
insulation	60

Notes

Maximum slenderness ratio (srf) unreinforced masonry
from AS3700:2018 Table 6.1 is:

18.0 at 60 minutes | 17.0 at 90 minutes

16.0 at 120 minutes | 15.5 at 180 minutes | 15.5 at 240 minutes

This data represents average results from production lots based on the results achieved by samples selected at random for testing. Figures are accurate at date of publication and subject to change without notice. Contact us for confirmation of product specification. Tested as per AS/NZS 4455.1: 2008 and 4456: 2003. Fire resistance levels as per AS3700: 2018. Acoustic opinion derived from Day Design Pty Ltd. 2012. Tested in accordance with AS 1191:1001 and AS/NZS 1276.1:1999.

^When reinforced and Srf <36: 240 minutes

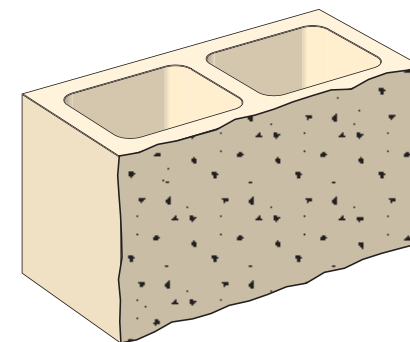
Product Details

range name	SOLITARY
finish	SPLIT FACE
colours	ASH BEACH CHARCOAL POLAR
product code description	30.121 200MM SPLIT FACE FULL

Properties and Specifications

nominal dimensions (length x width x height mm)	400 x 300 x 200mm
actual dimensions (length x width x height mm)	390 x 290 x 190mm
core volume (% overall thickness)	>30
characteristic unconfined compressive strength (MPa)	>15
minimum shell thickness (mm)	
average weight (KG)	22.2
units per tonne	45
number per pallet	45
number per sqm/lm	12.5
durability class (to AS4456.10 - sodium sulphate and sodium chloride)	EXPOSURE
wall mass inc mortar hollow	-
wall mass inc mortar and core fill	-
Light Reflectance Value	-

Diagram



Fire Resistance Levels^

structural adequacy (see notes)	60 to 240
integrity	60
insulation	60

Notes

Maximum slenderness ratio (srf) unreinforced masonry
from AS3700:2018 Table 6.1 is:

18.0 at 60 minutes | 17.0 at 90 minutes

16.0 at 120 minutes | 15.5 at 180 minutes | 15.5 at 240 minutes

This data represents average results from production lots based on the results achieved by samples selected at random for testing. Figures are accurate at date of publication and subject to change without notice. Contact us for confirmation of product specification. Tested as per AS/NZS 4455.1: 2008 and 4456: 2003. Fire resistance levels as per AS3700: 2018. Acoustic opinion derived from Day Design Pty Ltd. 2012. Tested in accordance with AS 1191:1001 and AS/NZS 1276.1:1999.

^When reinforced and Srf <36: 240 minutes

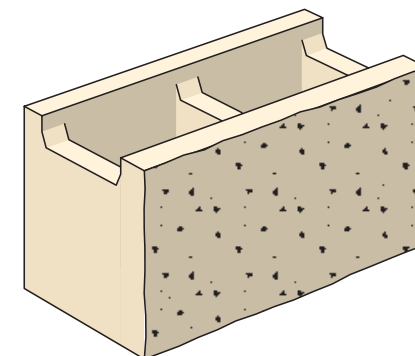
Product Details

range name	SOLITARY
finish	SPLIT FACE
colours	ASH BEACH CHARCOAL POLAR
product code description	30.142 200MM SPLIT FACE RECESSED WEB OR CHANNEL

Properties and Specifications

nominal dimensions (length x width x height mm)	400 x 300 x 200mm
actual dimensions (length x width x height mm)	390 x 290 x 190mm
core volume (% overall thickness)	52
characteristic unconfined compressive strength (MPa)	>15
minimum shell thickness (mm)	35
average weight (KG)	21.8
units per tonne	46
number per pallet	45
number per sqm/lm	12.5
durability class (to AS4456.10 - sodium sulphate and sodium chloride)	EXPOSURE
wall mass inc mortar hollow	283
wall mass inc mortar and core fill	-
Light Reflectance Value	-

Diagram



Fire Resistance Levels^

structural adequacy (see notes)	60 to 240
integrity	60
insulation	60

Notes

Maximum slenderness ratio (srf) unreinforced masonry
from AS3700:2018 Table 6.1 is:

18.0 at 60 minutes | 17.0 at 90 minutes

16.0 at 120 minutes | 15.5 at 180 minutes | 15.5 at 240 minutes

This data represents average results from production lots based on the results achieved by samples selected at random for testing. Figures are accurate at date of publication and subject to change without notice. Contact us for confirmation of product specification. Tested as per AS/NZS 4455.1: 2008 and 4456: 2003. Fire resistance levels as per AS3700: 2018. Acoustic opinion derived from Day Design Pty Ltd. 2012. Tested in accordance with AS 1191:1001 and AS/NZS 1276.1:1999.

^When reinforced and Srf <36: 240 minutes