

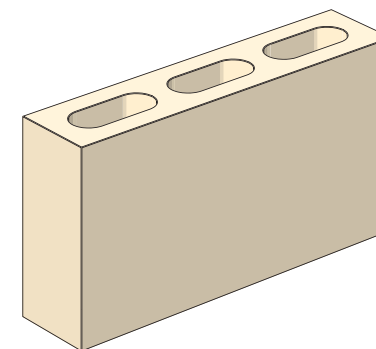
Product Details

range name	ARCHITEC
finish	POLISHED SHOT BLAST SMOOTH HONED
colours	ALABASTER ALMOND CHARCOAL PEARL GREY
product code description	10.01 90MM FULL VENEER

Properties and Specifications

nominal dimensions (length x width x height mm)	400 x 100 x 200mm
actual dimensions (length x width x height mm)	390 x 90 x 190mm
core volume (% overall thickness)	<30
characteristic unconfined compressive strength (MPa)	>15
minimum shell thickness (mm)	25
average weight (KG)	11
units per tonne	90
number per pallet	180
number per sqm/lm	12.5
durability class (to AS4456.10 - sodium sulphate and sodium chloride)	GENERAL PURPOSE
wall mass inc mortar hollow	150
Light Reflectance Value	-

Diagram



Fire Resistance Levels

structural adequacy (see notes)	60 to 240
integrity	60
insulation	60

Notes

Maximum slenderness ratio (srf) from AS3700:2018 Table 6.1 is:
 18.0 at 60 minutes | 17.0 at 90 minutes
 16.0 at 120 minutes | 15.5 at 180 minutes | 15.5 at 240 minutes

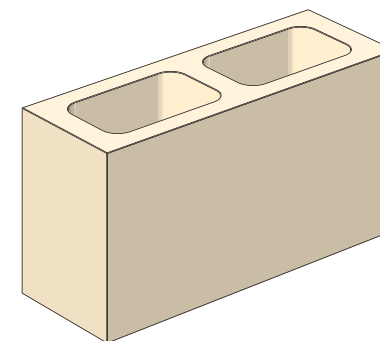
Product Details

range name	ARCHITEC
finish	POLISHED SHOT BLAST SMOOTH HONED
colours	ALABASTER ALMOND CHARCOAL PEARL GREY
product code description	15.01 140MM FULL VENEER

Properties and Specifications

nominal dimensions (length x width x height mm)	400 x 150 x 200mm
actual dimensions (length x width x height mm)	390 x 140 x 190mm
core volume (% overall thickness)	42
characteristic unconfined compressive strength (MPa)	>15
minimum shell thickness (mm)	25
average weight (KG)	13.9
units per tonne	72
number per pallet	120
number per sqm/lm	12.5
durability class (to AS4456.10 - sodium sulphate and sodium chloride)	EXPOSURE
wall mass inc mortar hollow	186
Light Reflectance Value	-

Diagram



Fire Resistance Levels

structural adequacy (see notes)	60 to 240
integrity	60
insulation	60

Notes

Maximum slenderness ratio (srf) from AS3700:2018 Table 6.1 is:
18.0 at 60 minutes | 17.0 at 90 minutes
16.0 at 120 minutes | 15.5 at 180 minutes | 15.5 at 240 minutes

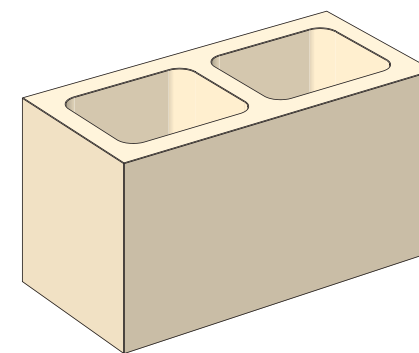
Product Details

range name	ARCHITEC
finish	POLISHED SHOT BLAST SMOOTH HONED
colours	ALABASTER ALMOND CHARCOAL PEARL GREY
product code description	20.01 140MM FULL VENEER

Properties and Specifications

nominal dimensions (length x width x height mm)	400 x 200 x 200mm
actual dimensions (length x width x height mm)	390 x 190 x 190mm
core volume (% overall thickness)	47
characteristic unconfined compressive strength (MPa)	>15
minimum shell thickness (mm)	30
average weight (KG)	15.2
units per tonne	66
number per pallet	90
number per sqm/lm	12.5
durability class (to AS4456.10 - sodium sulphate and sodium chloride)	EXPOSURE
wall mass inc mortar hollow	199
Light Reflectance Value	-

Diagram



Fire Resistance Levels

structural adequacy (see notes)	60 to 240
integrity	60
insulation	60

Notes

Maximum slenderness ratio (srf) from AS3700:2018 Table 6.1 is:
18.0 at 60 minutes | 17.0 at 90 minutes
16.0 at 120 minutes | 15.5 at 180 minutes | 15.5 at 240 minutes

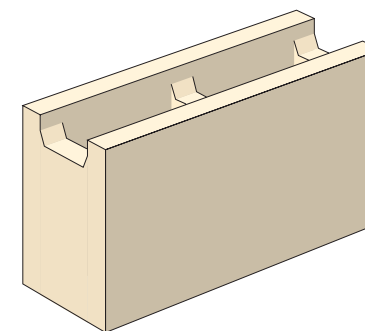
Product Details

range name	ARCHITEC
finish	POLISHED SHOT BLAST SMOOTH HONED
colours	ALABASTER ALMOND CHARCOAL PEARL GREY
product code description	15.42 140MM RECESSED WEB OR CHANNEL

Properties and Specifications

nominal dimensions (length x width x height mm)	400 x 150 x 200mm
actual dimensions (length x width x height mm)	390 x 140 x 190mm
core volume (% overall thickness)	41
characteristic unconfined compressive strength (MPa)	>15
minimum shell thickness (mm)	25
average weight (KG)	12.5
units per tonne	80
number per pallet	144
number per sqm/lm	12.5
durability class (to AS4456.10 - sodium sulphate and sodium chloride)	EXPOSURE
wall mass inc mortar hollow	140
wall mass inc grouted solid	300
Light Reflectance Value	-

Diagram



Fire Resistance Levels

structural adequacy (see notes*)	60 to 240
integrity	HOLLOW 60 CORE FILLED 120
insulation	HOLLOW 60 CORE FILLED 120

Notes

Maximum slenderness ratio (srf) hollow masonry
from AS3700:2018 Table 6.1 is:

18.0 at 60 minutes | 17.0 at 90 minutes

16.0 at 120 minutes | 15.5 at 180 minutes | 15.5 at 240 minutes

This data represents average results from production lots based on the results achieved by samples selected at random for testing. Figures are accurate at date of publication and subject to change without notice. Contact us for confirmation of product specification. Tested as per AS/NZS 4455.1: 2008 and 4456: 2003. Fire resistance levels as per AS3700: 2018. Acoustic opinion derived from Day Design Pty Ltd. 2012. Tested in accordance with AS 1191:1001 and AS/NZS 1276.1:1999.

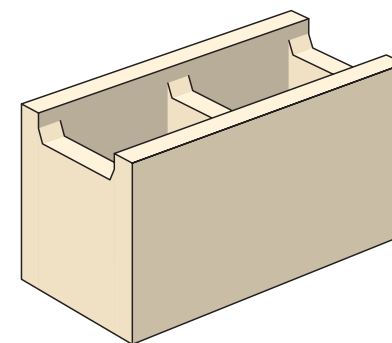
Product Details

range name	ARCHITEC
finish	POLISHED SHOT BLAST SMOOTH HONED
colours	ALABASTER ALMOND CHARCOAL PEARL GREY
product code description	20.42 190MM RECESSED WEB OR CHANNEL

Properties and Specifications

nominal dimensions (length x width x height mm)	400 x 200 x 200mm
actual dimensions (length x width x height mm)	390 x 190 x 190mm
core volume (% overall thickness)	48
characteristic unconfined compressive strength (MPa)	>15
minimum shell thickness (mm)	30
average weight (KG)	15.2
units per tonne	64
number per pallet	90
number per sqm/lm	12.5
durability class (to AS4456.10 - sodium sulphate and sodium chloride)	EXPOSURE
wall mass inc mortar hollow	199
wall mass inc grouted solid	400
Light Reflectance Value	-

Diagram



Fire Resistance Levels^

structural adequacy (see notes)	60 to 240
integrity	HOLLOW 60 CORE FILLED 240
insulation	HOLLOW 60 CORE FILLED 240

Notes

Maximum slenderness ratio (srf) unreinforced masonry from AS3700:2018 Table 6.1 is:

18.0 at 60 minutes | 17.0 at 90 minutes

16.0 at 120 minutes | 15.5 at 180 minutes | 15.5 at 240 minutes

This data represents average results from production lots based on the results achieved by samples selected at random for testing. Figures are accurate at date of publication and subject to change without notice. Contact us for confirmation of product specification. Tested as per AS/NZS 4455.1: 2008 and 4456: 2003. Fire resistance levels as per AS3700: 2018. Acoustic opinion derived from Day Design Pty Ltd. 2012. Tested in accordance with AS 1191:1001 and AS/NZS 1276.1:1999.

^When reinforced and Srf < 36: 240 minutes

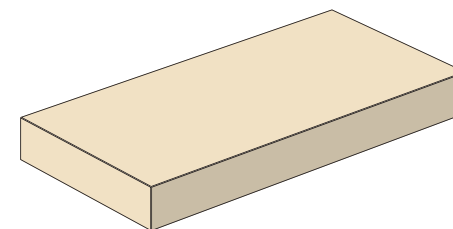
Product Details

range name	ARCHITEC
finish	POLISHED SHOT BLAST SMOOTH HONED
colours	ALABASTER ALMOND CHARCOAL PEARL GREY
product code description	190MM CAPPING TILE

Properties and Specifications

nominal dimensions (length x width x height mm)	390 x 190 x 50mm
actual dimensions (length x width x height mm)	390 x 190 x 40mm
core volume (% overall thickness)	SOLID
characteristic unconfined compressive strength (MPa)	>10
minimum shell thickness (mm)	N/A
average weight (KG)	6.5
units per tonne	154
number per pallet	270
number per sqm/lm	50 OR 2.5 LM
durability class (to AS4456.10 - sodium sulphate and sodium chloride)	EXPOSURE
wall mass inc mortar hollow	-
Light Reflectance Value	-

Diagram



Fire Resistance Levels

structural adequacy (see notes)	60 to 240
integrity	60
insulation	60

Notes

Maximum slenderness ratio (srf) from AS3700:2018 Table 6.1 is:
18.0 at 60 minutes | 17.0 at 90 minutes
16.0 at 120 minutes | 15.5 at 180 minutes | 15.5 at 240 minutes

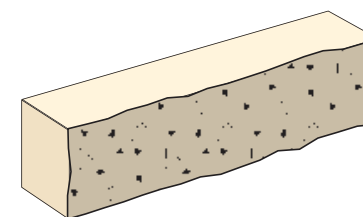
Product Details

range name	ARCHITEC
finish	SPLIT FACE
colours	ALABASTER ALMOND CHARCOAL PEARL GREY
product code description	10.109 90MM HALF HEIGHT SPLIT FACE VENEER

Properties and Specifications

nominal dimensions (length x width x height mm)	400 x 100 x 100mm
actual dimensions (length x width x height mm)	390 x 90 x 90mm
core volume (% overall thickness)	SOLID
characteristic unconfined compressive strength (MPa)	>10
minimum shell thickness (mm)	N/A
average weight (KG)	7.2
units per tonne	139
number per pallet	288
number per sqm/lm	25
durability class (to AS4456.10 - sodium sulphate and sodium chloride)	EXPOSURE
wall mass inc mortar hollow	200
wall mass inc grouted solid	-
Light Reflectance Value	-

Diagram



Fire Resistance Levels^

structural adequacy (see notes)	60 to 240
integrity	HOLLOW 60
insulation	HOLLOW 60

Notes

Maximum slenderness ratio (srf) unreinforced masonry from AS3700:2018 Table 6.1 is:

18.0 at 60 minutes | 17.0 at 90 minutes

16.0 at 120 minutes | 15.5 at 180 minutes | 15.5 at 240 minutes

This data represents average results from production lots based on the results achieved by samples selected at random for testing. Figures are accurate at date of publication and subject to change without notice. Contact us for confirmation of product specification. Tested as per AS/NZS 4455.1: 2008 and 4456: 2003. Fire resistance levels as per AS3700: 2018. Acoustic opinion derived from Day Design Pty Ltd. 2012. Tested in accordance with AS 1191:1001 and AS/NZS 1276.1:1999.

^When reinforced and Srf < 36: 240 minutes

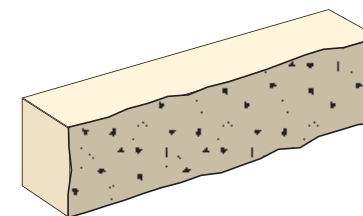
Product Details

range name	ARCHITEC
finish	SPLIT FACE
colours	ALABASTER ALMOND CHARCOAL PEARL GREY
product code description	10.109 90MM SPLIT FACE FULL VENEER

Properties and Specifications

nominal dimensions (length x width x height mm)	100 x 100 x 400mm
actual dimensions (length x width x height mm)	90 x 90 x 3900mm
core volume (% overall thickness)	<30
characteristic unconfined compressive strength (MPa)	>15
minimum shell thickness (mm)	24
average weight (KG)	12.2
units per tonne	82
number per pallet	150
number per sqm/lm	12.5
durability class (to AS4456.10 - sodium sulphate and sodium chloride)	GENERAL PURPOSE
wall mass inc mortar hollow	168
wall mass inc grouted solid	-
Light Reflectance Value	-

Diagram



Fire Resistance Levels^

structural adequacy (see notes)	60 to 240
integrity	HOLLOW 60
insulation	HOLLOW 60

Notes

Maximum slenderness ratio (srf) unreinforced masonry
from AS3700:2018 Table 6.1 is:

18.0 at 60 minutes | 17.0 at 90 minutes

16.0 at 120 minutes | 15.5 at 180 minutes | 15.5 at 240 minutes

This data represents average results from production lots based on the results achieved by samples selected at random for testing. Figures are accurate at date of publication and subject to change without notice. Contact us for confirmation of product specification. Tested as per AS/NZS 4455.1: 2008 and 4456: 2003. Fire resistance levels as per AS3700: 2018. Acoustic opinion derived from Day Design Pty Ltd. 2012. Tested in accordance with AS 1191:1001 and AS/NZS 1276.1:1999.

^When reinforced and Srf <36: 240 minutes

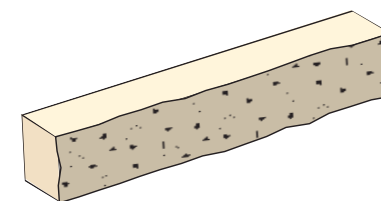
Product Details

range name	ARCHITEC
finish	SPLIT FACE
colours	ALABASTER ALMOND CHARCOAL PEARL GREY
product code description	10.117 90MM SPLIT FACE QUARTER HIGH VENEER

Properties and Specifications

nominal dimensions (length x width x height mm)	400 x 100 x 50mm
actual dimensions (length x width x height mm)	390 x 90 x 40mm
core volume (% overall thickness)	SOLID
characteristic unconfined compressive strength (MPa)	>10
minimum shell thickness (mm)	N/A
average weight (KG)	3.1
units per tonne	323
number per pallet	480
number per sqm/lm	50 OR 2.5 LM
durability class (to AS4456.10 - sodium sulphate and sodium chloride)	EXPOSURE
wall mass inc mortar hollow	190
wall mass inc grouted solid	-
Light Reflectance Value	-

Diagram



Fire Resistance Levels^

structural adequacy (see notes)	60 to 240
integrity	HOLLOW 60
insulation	HOLLOW 60

Notes

Maximum slenderness ratio (srf) unreinforced masonry from AS3700:2018 Table 6.1 is:

18.0 at 60 minutes | 17.0 at 90 minutes

16.0 at 120 minutes | 15.5 at 180 minutes | 15.5 at 240 minutes

This data represents average results from production lots based on the results achieved by samples selected at random for testing. Figures are accurate at date of publication and subject to change without notice. Contact us for confirmation of product specification. Tested as per AS/NZS 4455.1: 2008 and 4456: 2003. Fire resistance levels as per AS3700: 2018. Acoustic opinion derived from Day Design Pty Ltd. 2012. Tested in accordance with AS 1191:1001 and AS/NZS 1276.1:1999.

^When reinforced and Srf < 36: 240 minutes

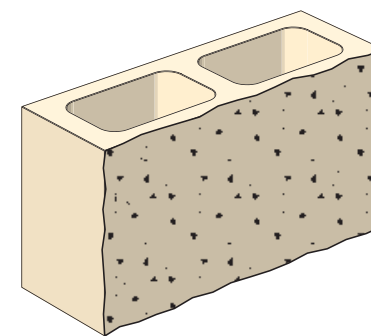
Product Details

range name	ARCHITEC
finish	SPLIT FACE
colours	ALABASTER ALMOND CHARCOAL PEARL GREY
product code description	15.121 140MM FULL SPLIT FACE

Properties and Specifications

nominal dimensions (length x width x height mm)	400 x 150 x 200mm
actual dimensions (length x width x height mm)	390 x 145 x 190mm
core volume (% overall thickness)	37
characteristic unconfined compressive strength (MPa)	>15
minimum shell thickness (mm)	30
average weight (KG)	15.5
units per tonne	64.5
number per pallet	120
number per sqm/lm	12.5
durability class (to AS4456.10 - sodium sulphate and sodium chloride)	EXPOSURE
wall mass inc mortar hollow	200
wall mass inc grouted solid	-
Light Reflectance Value	-

Diagram



Fire Resistance Levels^

structural adequacy (see notes)	60 to 240
integrity	HOLLOW 60
insulation	HOLLOW 60

Notes

Maximum slenderness ratio (srf) unreinforced masonry from AS3700:2018 Table 6.1 is:

18.0 at 60 minutes | 17.0 at 90 minutes

16.0 at 120 minutes | 15.5 at 180 minutes | 15.5 at 240 minutes

This data represents average results from production lots based on the results achieved by samples selected at random for testing. Figures are accurate at date of publication and subject to change without notice. Contact us for confirmation of product specification. Tested as per AS/NZS 4455.1: 2008 and 4456: 2003. Fire resistance levels as per AS3700: 2018. Acoustic opinion derived from Day Design Pty Ltd. 2012. Tested in accordance with AS 1191:1001 and AS/NZS 1276.1:1999.

^When reinforced and Srf < 36: 240 minutes

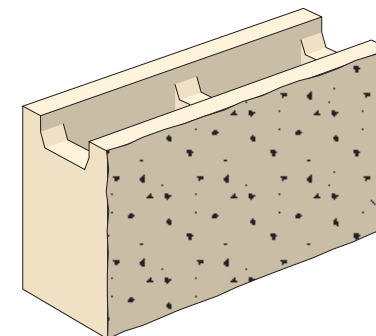
Product Details

range name	ARCHITEC
finish	SPLIT FACE
colours	ALABASTER ALMOND CHARCOAL PEARL GREY
product code description	15.142 140MM SPLIT FACE RECESSED WEB OR CHANNEL

Properties and Specifications

nominal dimensions (length x width x height mm)	400 x 150 x 200mm
actual dimensions (length x width x height mm)	390 x 145 x 190mm
core volume (% overall thickness)	>30
characteristic unconfined compressive strength (MPa)	>15
minimum shell thickness (mm)	25
average weight (KG)	15.0
units per tonne	66
number per pallet	120
number per sqm/lm	12.5
durability class (to AS4456.10 - sodium sulphate and sodium chloride)	EXPOSURE
wall mass inc mortar hollow	-
wall mass inc mortar and core fill	>300
Light Reflectance Value	-

Diagram



Fire Resistance Levels^

structural adequacy (see notes)	60 to 240
integrity	HOLLOW 60 CORE FILLED 120
insulation	HOLLOW 60 CORE FILLED 120

Notes

Maximum slenderness ratio (srf) unreinforced masonry
from AS3700:2018 Table 6.1 is:

18.0 at 60 minutes | 17.0 at 90 minutes

16.0 at 120 minutes | 15.5 at 180 minutes | 15.5 at 240 minutes

This data represents average results from production lots based on the results achieved by samples selected at random for testing. Figures are accurate at date of publication and subject to change without notice. Contact us for confirmation of product specification. Tested as per AS/NZS 4455.1: 2008 and 4456: 2003. Fire resistance levels as per AS3700: 2018. Acoustic opinion derived from Day Design Pty Ltd. 2012. Tested in accordance with AS 1191:1001 and AS/NZS 1276.1:1999.

^When reinforced and Srf < 36: 240 minutes

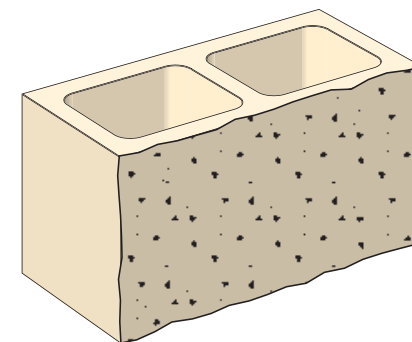
Product Details

range name	ARCHITEC
finish	SPLIT FACE
colours	ALABASTER ALMOND CHARCOAL PEARL GREY
product code description	20.121 200MM SPLIT FACE FULL

Properties and Specifications

nominal dimensions (length x width x height mm)	400 x 200 x 200mm
actual dimensions (length x width x height mm)	390 x 195 x 190mm
core volume (% overall thickness)	45
characteristic unconfined compressive strength (MPa)	>15
minimum shell thickness (mm)	30
average weight (KG)	17.7
units per tonne	56.5
number per pallet	90
number per sqm/lm	12.5
durability class (to AS4456.10 - sodium sulphate and sodium chloride)	EXPOSURE
wall mass inc mortar hollow	230
wall mass inc mortar and core fill	-
Light Reflectance Value	-

Diagram



Fire Resistance Levels^

structural adequacy (see notes)		60 to 240
integrity	HOLLOW	60
insulation	HOLLOW	60

Notes

Maximum slenderness ratio (srf) unreinforced masonry
from AS3700:2018 Table 6.1 is:

18.0 at 60 minutes | 17.0 at 90 minutes

16.0 at 120 minutes | 15.5 at 180 minutes | 15.5 at 240 minutes

This data represents average results from production lots based on the results achieved by samples selected at random for testing. Figures are accurate at date of publication and subject to change without notice. Contact us for confirmation of product specification. Tested as per AS/NZS 4455.1: 2008 and 4456: 2003. Fire resistance levels as per AS3700: 2018. Acoustic opinion derived from Day Design Pty Ltd. 2012. Tested in accordance with AS 1191:1001 and AS/NZS 1276.1:1999.

^When reinforced and Srf < 36: 240 minutes

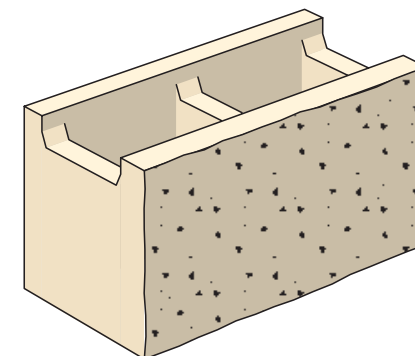
Product Details

range name	ARCHITEC
finish	SPLIT FACE
colours	ALABASTER ALMOND CHARCOAL PEARL GREY
product code description	20.142 200MM SPLIT FACE RECESSED WEB OR CHANNEL

Properties and Specifications

nominal dimensions (length x width x height mm)	400 x 200 x 200mm
actual dimensions (length x width x height mm)	390 x 190 x 190mm
core volume (% overall thickness)	46
characteristic unconfined compressive strength (MPa)	>15
minimum shell thickness (mm)	30
average weight (KG)	18.2
units per tonne	55
number per pallet	90
number per sqm/lm	12.5
durability class (to AS4456.10 - sodium sulphate and sodium chloride)	EXPOSURE
wall mass inc mortar hollow	-
wall mass inc mortar and core fill	400
Light Reflectance Value	-

Diagram



Fire Resistance Levels^

structural adequacy (see notes)	60 to 240			
integrity	HOLLOW	60	CORE FILLED	240
insulation	HOLLOW	60	CORE FILLED	240

Notes

Maximum slenderness ratio (srf) unreinforced masonry
from AS3700:2018 Table 6.1 is:

18.0 at 60 minutes | 17.0 at 90 minutes

16.0 at 120 minutes | 15.5 at 180 minutes | 15.5 at 240 minutes

This data represents average results from production lots based on the results achieved by samples selected at random for testing. Figures are accurate at date of publication and subject to change without notice. Contact us for confirmation of product specification. Tested as per AS/NZS 4455.1: 2008 and 4456: 2003. Fire resistance levels as per AS3700: 2018. Acoustic opinion derived from Day Design Pty Ltd. 2012. Tested in accordance with AS 1191:1001 and AS/NZS 1276.1:1999.

^When reinforced and Srf < 36: 240 minutes

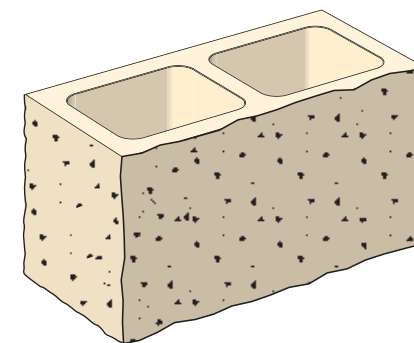
Product Details

range name	ARCHITEC
finish	SPLIT FACE
colours	ALABASTER ALMOND CHARCOAL PEARL GREY
product code description	20.139 190MM SPLIT FACE CORNER

Properties and Specifications

nominal dimensions (length x width x height mm)	400 x 200 x 200mm
actual dimensions (length x width x height mm)	390 x 190 x 190mm
core volume (% overall thickness)	>30
characteristic unconfined compressive strength (MPa)	>15
minimum shell thickness (mm)	30
average weight (KG)	20
units per tonne	50
number per pallet	90
number per sqm/lm	5 PER VERTICAL METRE
durability class (to AS4456.10 - sodium sulphate and sodium chloride)	EXPOSURE
wall mass inc mortar hollow	-
wall mass inc mortar and core fill	-
Light Reflectance Value	-

Diagram



Fire Resistance Levels^

structural adequacy (see notes)	60 to 240
integrity	HOLLOW 60
insulation	HOLLOW 60

Notes

Maximum slenderness ratio (srf) unreinforced masonry from AS3700:2018 Table 6.1 is:

18.0 at 60 minutes | 17.0 at 90 minutes

16.0 at 120 minutes | 15.5 at 180 minutes | 15.5 at 240 minutes

This data represents average results from production lots based on the results achieved by samples selected at random for testing. Figures are accurate at date of publication and subject to change without notice. Contact us for confirmation of product specification. Tested as per AS/NZS 4455.1: 2008 and 4456: 2003. Fire resistance levels as per AS3700: 2018. Acoustic opinion derived from Day Design Pty Ltd. 2012. Tested in accordance with AS 1191:1001 and AS/NZS 1276.1:1999.

^When reinforced and Srf < 36: 240 minutes