

May 2022

BRICKWORKS

Perth

Retail Price List

Masonry Blocks, Limestone Blocks, Wall Cladding,
Natural Stone, Retaining Walls, Pavers & Accessories



Perth Retail Price List. May 2022

Concrete Pavers from Austral Masonry

Product / Finish	Number per pack	Number Per LM	Per LM	Per Unit
Florence Smooth - Limestone, Amber, Sandstone, Earth, Pewter, Ash				
200 x 200 x 50 mm	432	25	\$20.95	\$0.83
200 x 200 x 60 mm	324	25	\$23.04	\$0.92
Florence Milled or Shot Blast - Limestone, Amber, Sandstone, Earth				
200 x 200 x 50 mm	432	25	\$31.45	\$1.25
200 x 200 x 60 mm	324	25	\$39.85	\$1.59



Clay Pavers from Bowral Bricks

Product / Finish	Per LM	Per Unit
Bowral London		
230 x 114 x 65 mm - Maple, Regency Grey, Silver Sand	\$102.00	\$
230 x 114 x 65 mm - Bowral Blue, Brahman Granite	\$114.00	\$
Bowral Hamlet		
230 x 114 x 65 mm - Sepia, Ash	\$107.00	\$
230 x 114 x 65 mm - Bowral Blue	\$131.00	\$

Perth Retail Price List. May 2022

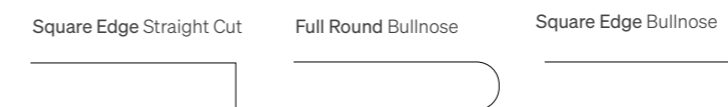
Engineered Pavers from UrbanStone

Product / Finish	Number per pack	Number Per SQM	Per SQM	Per Unit
Reef - Pearl, Wheat				
400 x 400 x 40 mm	135	6.25	\$38.00	\$6.08
400 x 400 x 60 mm	90	6.25	\$43.00	\$6.88
Provincial Saw Cut - Pearl, Ash, Graphite, Wheat				
400 x 400 x 40 mm	135	6.25	\$41.00	\$6.56
600 x 400 x 40 mm	72	4.17	\$41.00	\$9.83
400 x 400 x 60 mm	90	6.25	\$45.00	\$7.20
Elegance Shot Blast - Pearl, Ash, Graphite, White Ash, Obsidian, Sand				
200 x 300 x 40 mm	360	16.67	\$59.95	\$3.59
400 x 400 x 40 mm	135	6.25	\$59.95	\$9.59
600 x 400 x 40 mm	72	4.17	\$59.95	\$14.37
400 x 400 x 60 mm	90	6.25	\$65.95	\$10.55
Luxury Milled - Pearl, Ash, Graphite, White Ash, Obsidian, Sand				
200 x 300 x 40 mm	360	16.67	\$77.95	\$4.67
400 x 400 x 40 mm	135	6.25	\$77.95	\$12.47
600 x 400 x 40 mm	72	4.17	\$77.95	\$18.69
400 x 400 x 60 mm	90	6.25	\$86.00	\$13.76
Opulence Honed - Pearl, Ash, Graphite, White Ash, Obsidian, Sand				
200 x 300 x 40 mm	360	16.67	\$99.95	\$5.99
400 x 400 x 40 mm	135	6.25	\$99.95	\$15.99
600 x 400 x 40 mm	72	4.17	\$99.95	\$23.96
Accolade Milled - Cloud Grey, Ivory White, Natural Beige, Golden Tan				
230 x 76 x 60 mm	780	57	\$160.00	\$2.80
400 x 400 x 40 mm	135	6.25	\$160.00	\$25.60
600 x 400 x 40 mm	72	4.17	\$160.00	\$38.36

Single Bullnose/Pool Copings from UrbanStone

Product / Finish	Number per pack	Number Per LM	Per LM	Per Unit
Reef - Pearl, Wheat				
Single Bullnose 400 x 400 x 40 mm	72	2.5	\$33.00	\$13.20
Single Bullnose 400 x 300 x 40 mm	72	2.5	\$29.95	\$11.98
Double Bullnose 400 x 400 x 40 mm	72	2.5	\$61.99	\$24.79
Double Bullnose 400 x 335 x 40 mm	72	2.5	\$61.99	\$24.79
Triple Bullnose 400 x 400 x 40 mm		2.5	\$65.55	\$26.22
Triple Bullnose 400 x 335 x 40 mm		2.5	\$65.55	\$26.22
Mitred/Radius Bullnose 400 x 400 x 40 mm		2.5	\$65.55	\$26.22
Provincial Saw Cut - Pearl, Ash, Graphite, Wheat				
Single Bullnose 400 x 400 x 40 mm	72	2.5	\$33.00	\$13.20
Single Bullnose Square Edge 400 x 300 x 40 mm	72	2.5	\$41.00	\$16.40
Single Bullnose Square Edge 400 x 400 x 40 mm	72	2.5	\$41.00	\$16.40
Single Bullnose Square Edge 600 x 400 x 40 mm	72	1.67	\$41.00	\$24.55
Double Bullnose 400 x 400 x 40 mm	72	2.5	\$103.50	\$41.40
Double Bullnose 400 x 335 x 40 mm	72	2.5	\$103.50	\$41.40
Triple Bullnose 400 x 400 x 40 mm		2.5		\$39.95
Triple Bullnose 400 x 335 x 40 mm		2.5		\$39.95
Mitred/Radius Bullnose 400 x 400 x 40 mm		2.5	\$69.00	\$27.60
Elegance Shot Blast - Pearl, Ash, Graphite, White Ash, Obsidian, Sand				
Single Bullnose 400 x 400 x 40 mm	72	2.5	\$63.00	\$25.20
Single Bullnose Square Edge 400 x 300 x 40 mm		2.5	\$63.00	\$25.20
Single Bullnose Square Edge 400 x 400 x 40 mm	72	2.5	\$63.00	\$25.20
Single Bullnose Square Edge 600 x 400 x 40 mm		1.66	\$63.00	\$37.95
Luxury Milled - Pearl, Ash, Graphite, White Ash, Obsidian, Sand				
Single Bullnose 400 x 400 x 40 mm	72	2.5	\$75.00	\$30.00
Single Bullnose Square Edge 400 x 300 x 40 mm	72	2.5	\$75.00	\$30.00
Single Bullnose Square Edge 400 x 400 x 40 mm	72	2.5	\$75.00	\$30.00
Single Bullnose Square Edge 600 x 400 x 40 mm		1.66	\$75.00	\$45.18
Opulence Honed - Pearl, Ash, Graphite, White Ash, Obsidian, Sand				
Single Bullnose 400 x 400 x 40 mm	72	2.5	\$98.00	\$39.20
Single Bullnose Square Edge 400 x 300 x 40 mm	72	2.5	\$98.00	\$39.20
Single Bullnose Square Edge 400 x 400 x 40 mm	72	2.5	\$98.00	\$39.20
Single Bullnose Square Edge 600 x 400 x 40 mm		1.66	\$98.00	\$59.03

Engineered Pavers Bullnose Options



All prices noted are ex yard/pick up from Jandakot. For delivery to metropolitan areas in Perth a minimum delivery charge of \$152.00 for orders under 3 full pallets.

All prices noted are ex yard/pick up from Jandakot. For delivery to metropolitan areas in Perth a minimum delivery charge of \$152.00 for orders under 3 full pallets.

Perth Retail Price List. May 2022

Granite and Limestone from UrbanStone

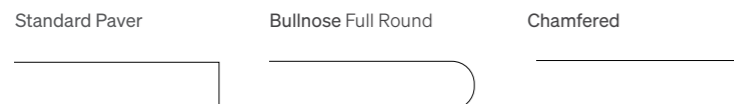
Product / Finish	Number per pack	Number Per SQM	Per SQM	Per Unit
Endurastone Flamed - Silver Granite				
400 x 400 x 25 mm	78	6.25	\$110.00	\$17.60
600 x 300 x 25 mm	78	5.56	\$110.00	\$19.82
Endurastone Flamed - Grey Granite				
400 x 400 x 25 mm	78	6.25	\$110.00	\$17.60
600 x 300 x 25 mm	78	5.56	\$110.00	\$19.82
Endurastone Flamed - Black Granite				
400 x 400 x 25 mm	78	6.25	\$140.00	\$22.40
600 x 300 x 25 mm	78	5.56	\$140.00	\$25.23
Terre Tumbled - Marigold				
400 x 400 x 30 mm	66	6.25	\$84.00	\$13.44
600 x 400 x 30 mm	66	4.17	\$84.00	\$20.19
1.44 sq metre French Pattern	11	0.69	\$74.00	\$52.11
Terre Tumbled - Oryx				
600 x 400 x 30 mm	66	4.17	\$94.00	\$22.60

Single Bullnose/Pool Copings from UrbanStone

Product / Finish	Number per pack	Number Per LM	Per LM	Per Unit
Endurastone Flamed - Silver Granite				
400 x 400 x 30 mm Bullnose	68	2.5	\$100.00	\$40.00
400 x 400 x 30 mm Chamfered	68	2.5	\$100.00	\$40.00
600 x 300 x 30 mm Bullnose	68	1.66	\$100.00	\$60.24
600 x 300 x 30 mm Chamfered	68	1.66	\$100.00	\$60.24
Endurastone Flamed - Grey Granite				
400 x 400 x 30 mm Bullnose	68	2.5	\$100.00	\$40.00
400 x 400 x 30 mm Chamfered	68	2.5	\$100.00	\$40.00
600 x 300 x 30 mm Bullnose	68	1.66	\$100.00	\$60.24
600 x 300 x 30 mm Chamfered	68	1.66	\$100.00	\$60.24
Endurastone Flamed - Black Granite				
400 x 400 x 30 mm Bullnose	68	2.5	\$120.00	\$48.00
400 x 400 x 30mm Chamfered	68	2.5	\$120.00	\$48.00
600 x 300 x 30 mm Bullnose	68	1.66	\$120.00	\$72.29
600 x 300 x 30 mm Chamfered	68	1.66	\$120.00	\$72.29

*Polished Chamfered bullnose is available for all Endurastone colours except Bluestone at a cost of \$10+ GST per lineal metre

Granite Bullnose Options



All prices noted are ex yard/pick up from Jandakot. For delivery to metropolitan areas in Perth a minimum delivery charge of \$152.00 for orders under 3 full pallets.

4

Please note: SQM = Square metre // LM = Linear metre

Perth Retail Price List. May 2022

Australian Granite from UrbanStone

Product / Finish	Number Per SQM	Per SQM	Per Unit
Exfoliated - All Colours			
400 x 400 x 20 mm	6.25	\$247.50	\$39.60
600 x 150 x 20 mm	11.11	\$247.50	\$22.27
Honed - All Colours			
400 x 400 x 20 mm	6.25	\$289.30	\$46.28
600 x 150 x 20 mm	11.11	\$289.30	\$26.03

Keope Porcelain Stoneware from UrbanStone

Product / Finish	Number per pack	Number Per SQM	Per SQM	Per Unit
Percosi - Pietra Di Barge, Pietra Di Combe, White, Black, Pietra Di Bagnolo				
600 x 600 x 20 mm	2	2.77	\$97.00	\$35.01
Soul - Walnut, Grey				
1200 x 300 x 20 mm	2	2.77	\$127.00	\$45.84

Retaining Wall Blocks

Product / Colours	Size L x W x H	Number per pack	Number Per SQM	Weight Per Unit	Per SQM	Per Unit
Heron Split Face - Carbon, Parchment						
Wall Block	390 x 245 x 198 mm	60	13	21.5	\$128.83	\$10.45
Capping Unit	390 x 250 x 70 mm	96	2.57	14		\$8.40
Corner Unit	360 x 160 x 198 mm	90		17		\$14.40
Hayman Smooth - Carbon, Parchment						
Wall Block	390 x 245 x 198 mm	60	13	23.9	\$128.83	\$7.95
Capping Unit	195 x 250 x 70 mm	96	2.57	16.6		\$6.95
Corner Unit	360 x 160 x 198 mm	90		17.2		\$5.95

Fire Pits from Austral Masonry

Product / Colours	Size L x W x H	Kit Includes	Each
Heron Split Face - Carbon and Parchment			
Large	1400 x 1400 x 500 mm	16 x Standard Units, 4 x Left Corner Units, 4 x Right Corner Units, 12 x Capping Units	\$383.20
Small	1000 x 1000 x 500 mm	8 x Standard Units, 4 x Left Corner Units, 4 x Right Corner Units, 8 x Capping Units	\$266.00
Hayman Smooth - Carbon and Parchment			
Large	1400 x 1400 x 500 mm	16 x Standard Units, 8 x Universal Corner Units, 12 x Capping Units	\$258.20
Small	1000 x 1000 x 500 mm	8 x Standard Units, 8 x Universal Corner Units, 8 x Capping Units	\$166.80

All prices noted are ex yard/pick up from Jandakot. For delivery to metropolitan areas in Perth a minimum delivery charge of \$152.00 for orders under 3 full pallets.

5

Please note: SQM = Square metre // LM = Linear metre

Perth Retail Price List. April 2022

Natural Limestone Blocks from UrbanStone

Product / Colours	Size L x W x H	Product Code	Weight Per Unit	Number Per Pallet	Per Unit
Carabooda Quarry Cut - Limestone					
Standard Unit	1000 x 350 x 350 mm	CB1000350350QC1	182	8	\$25.15
Standard Unit	500 x 350 x 350 mm	CB500350350QC1	91	18	\$17.80
Standard Unit	500 x 350 x 240 mm	CB500350240QC1	67	24	\$15.70
Standard Unit	500 x 350 x 200 mm	CB500350200QC1	53	30	\$14.81
Standard Unit	500 x 350 x 150 mm	CB500350150QC1	41	36	\$14.65
Moore River Quarry Cut - Limestone					
Standard Unit	1000 x 350 x 350 mm	MB1000350350QC1	182	8	\$29.35
Standard Unit	500 x 350 x 350 mm	MB500350350QC1	91	18	\$19.43
Standard Unit	500 x 350 x 240 mm	MB500350240QC1	67	24	\$18.38
Standard Unit	500 x 350 x 200 mm	MB500350200QC1	53	30	\$16.80
Standard Unit	500 x 350 x 150 mm	MB500350150QC1	41	36	\$15.70
Carabooda Diamond Cut - Limestone					
Standard Unit	500 x 245 x 100 mm	CB500245100DC1	13	100	\$10.45
Standard Unit	500 x 332 x 165 mm	CB500332165DC1	40	36	\$16.28
Standard Unit	500 x 332 x 100 mm	CB500332100DC1	27	50	\$14.65
Standard Unit	500 x 245 x 165 mm	CB500245165DC1	34	48	\$14.65
Standard Unit	500 x 159 x 100 mm	CB500159100DC1	22	68	\$8.35
Standard Unit	500 x 117 x 100 mm	CB500117100DC1	11	136	\$7.30
Moore River Diamond Cut - Limestone					
Standard Unit	500 x 245 x 100 mm	MB500245100DC1	13	100	\$14.65
Standard Unit	500 x 332 x 165 mm	MB500332165DC1	40	36	\$18.38
Standard Unit	500 x 332 x 100 mm	MB500332100DC1	27	50	\$16.80
Standard Unit	500 x 245 x 165 mm	MB500245165DC1	34	48	\$14.81
Standard Unit	500 x 159 x 100 mm	MB500159100DC1	13	100	\$8.51

Wall Cladding from UrbanStone

Product	Size (L x W x H)	Number per Pack	Number per SQM	Weight per Unit	Per SQM	Per Unit
Stackstone - Colorado, Mini Colorado, Cleft Face Black, Knapped Face Snow, Cleft Face Rustic, Knapped Face Stoneface, Cloud Grey						
Straight	610 x 152 x 35mm	384	11.11	4.4	\$99.00	\$8.91
Corners	610 x 152 x 35 mm	384		4.4	\$99.00	\$8.91
RandomStone - Alpine, Beech, Coastal, Collie						
Straight	600 x 200 x 30-37 mm	112	9.1	7.1	\$119.00	\$14.29
Corners	300 x 200 x 30-37mm	224	16.66	4.1	\$119.00	\$7.17

Perth Retail Price List. April 2022

Engineered Limestone Blocks from UrbanStone

Product / Colours	Size (W x L x H)	Product Code	Approx Weight (kg)	Number Per Pallet	Per Unit
Brickstone / Kerbing / Scapestone					
Brickstone	290 x 160 x 90 mm	BR1291690PL	7.5	200	\$3.62
Kerbing	500 x 160 x 90 mm	KER501690	10	90	\$6.84
Mini Block	500 x 245 x 90 mm	MIN502490PC	20	80	\$7.76
Scapestone 165 - Plain	350 x 350 x 165 mm	SCA353516PC	38	36	\$9.14
Scapestone 165 - Bevelled	350 x 350 x 165 mm	SCA353516BC	38	36	\$9.14
Scapestone 120 - Plain	500 x 350 x 120 mm	SCA503512PC	40	48	\$10.29
Scapestone 120 - Bevelled	500 x 350 x 120 mm	SCA503512BC	40	48	\$10.29
Wallstone					
Wallstone 24 - Plain	500 x 350 x 240 mm	WAL503524PC	84	24	\$13.00
Wallstone 24 - Bevelled	500 x 350 x 240 mm	WAL503524BC	84	24	\$13.00
Wallstone Split - Plain	500 x 165 x 245 mm	WAL501624PC	37	48	\$9.14
Wallstone Split - Bevelled	500 x 165 x 245 mm	WAL501624BC	37	48	\$9.14
Wallstone 20 - Plain	500 x 350 x 200 mm	WAL503520PC	65	30	\$11.27
Wallstone 20 - Bevelled	500 x 350 x 200 mm	WAL503520BC	65	30	\$11.27
Wallstone 19 - Plain	500 x 245 x 190 mm	WAL502419PC	45	40	\$10.52
Wallstone 19 - Bevelled	500 x 245 x 190 mm	WAL502419BC	45	40	\$10.52
Wallstone Jnr - Plain	400 x 300 x 190 mm	WAL403019PC	45	36	\$10.29
Wallstone Jnr - Bevelled	400 x 300 x 190 mm	WAL403019BC	45	36	\$10.29
Pier Caps					
Pier Caps 380 - Plain	380 x 380 x 100 mm	PIED38310LS	25	20	\$65.03
Pier Caps 440 - Plain	440 x 440 x 100 mm	PIED444410LS	38	20	\$73.20
Pier Cap 560 - Plain	560 x 560 x 100 mm	PIED565610LS	50	20	\$80.49
Bullnose					
Bullnose 150mm Single Sided	500 x 150 x 50 mm	BND501550SSLS	7	144	\$20.13
Bullnose 195 mm Single Sided	500 x 195 x 50 mm	BND501950SSLS	9	120	\$20.13
Bullnose 240 mm Single Sided	500 x 240 x 50 mm	BND502450SSLS	11	96	\$20.13
Bullnose 300 mm Single Sided	500 x 300 x 50 mm	BND503050SSLS	15	72	\$21.79
Bullnose 340 mm Single Sided	500 x 340 x 50 mm	BND 503450SSLS	16	72	\$21.79
Bullnose 150 mm Double Sided	500 x 150 x 50 mm	BND501550DSLS	7	144	\$21.79
Bullnose 195 mm Double Sided	500 x 195 x 50 mm	BND501950DSLS	9	120	\$21.79
Bullnose 240 mm Double Sided	500 x 240 x 50 mm	BND502450DSLS	11	96	\$21.79
Bullnose 300 mm Double Sided	500 x 300 x 50 mm	BND503050DSLS	15	72	\$23.58
Bullnose 340 mm Double Sided	500 x 340 x 50 mm	BND503450DSLS	16	72	\$23.58

Carabooda Reconstituted Limestone Blocks from UrbanStone

Product / Colours	Size (W x L x H)	Product Code	Approx Weight (kg)	Number Per Pallet	Per Unit
Carabooda - Plain - Reconstituted Limestone					
Cream Standard Unit - Plain	1000 x 350 x 350 mm	CBR1000350350CP	220	8	\$19.49
Cream Standard Unit - Plain	1000 x 350 x 240 mm	CBR1000350240CP	150	12	\$17.14
Cream Standard Unit - Plain	1000 x 350 x 165 mm	CBR1000350165CP	105	12	\$16.45
Cream Standard Unit - Plain	500 x 350 x 350 mm	CBR500350350CP	110	18	\$13.23
Cream Standard Unit - Bevelled	1000 x 350 x 350 mm	CBR1000350350CB	220	8	\$19.49
Cream Standard Unit - Bevelled	1000 x 350 x 240 mm	CBR1000350240CB	150	12	\$17.14
Cream Standard Unit - Bevelled	1000 x 350 x 165 mm	CBR1000350165CB	105	12	\$16.45
Cream Standard Unit - Bevelled	500 x 350 x 350 mm	CBR500350350CB	110	18	\$13.23
Grey Standard Unit - Plain	1000 x 350 x 350 mm	CBR1000350350GP	220	8	\$17.19
Grey Standard Unit - Plain	1000 x 350 x 240 mm	CBR1000350240GP	150	12	\$15.53
Grey Standard Unit - Plain	1000 x 350 x 165 mm	CBR1000350165GP	105	12	\$13.92
Grey Standard Unit - Plain	500 x 350 x 350 mm	CBR500350350GP	110	18	\$11.50

All prices noted are ex yard/pick up from Jandakot. For delivery to metropolitan areas in Perth a minimum delivery charge of \$152.00 for orders under 3 full pallets.

Perth Retail Price List. May 2022

Premium Coloured Masonry from GB Masonry

Product	Size (L x W x H)	Number Per SQM	Approx Weight (KG)	Number Per Pallet	Number Per Tonne	Per Unit (inc GST)
GB Smooth						
10.01 Standard	390 x 90 x 190mm	12.5	10.0	180	100	\$4.77
10.25 Corner Return	390 x 190 x 190 x 90 mm		13.3	120	75	\$7.17
10.38 Half Height Sill	130 x 90 x 190 x 18 mm		3.8	448	263	\$3.84
10.71 Half Height	390 x 90 x 90 mm	25	5.3	360	189	\$3.19
20.01 Standard	390 x 190 x 190 mm	12.5	15.2	90	66	\$8.35
20.42 Channel	390 x 190 x 190 mm	12.5	15.6	90	64	\$8.35
20.71 Half Height	390 x 190 x 90 mm	25	8.0	180	125	\$5.67
20.38 Half Height Sill	245 x 100 x 190 x 70 mm		8.3	224	120	\$5.38
50.31 Capping Tile	390 x 190 x 40 mm		6.1	288	164	\$6.36
30.01 Standard	290 x 290 x 190 mm		20.0	60	50	\$13.80
GB Split Face						
10.91 Standard	390 x 90 x 190 mm	12.5	12.7	150	79	\$6.37
10.125 Corner Return	390 x 190 x 190 mm		20	90	50	\$13.80
10.971 Half Height	390 x 90 x 90 mm	25	5.6	300	179	\$4.30
20.121 Standard	390 x 90 x 190 mm	12.5	15.8	90	63	\$8.64
20.127 Half Height	390 x 190 x 90 mm	25	9.1	180	110	\$5.24
20.142 Channel	390 x 190 x 190 mm	25	16.7	90	60	\$8.64
20.139 Corner Return	390 x 190 x 190 mm	25	20.0	90	50	\$13.80
30.121 Standard	390 x 290 x 190 mm	25	22.2	45	45	\$13.75
30.142 Channel	390 x 290 x 190 mm	25	22.2	45	45	\$13.75
GB Honed						
10.01 Standard	390 x 90 x 190 mm	12.5	10.0	180	100	\$7.82
10.25 Corner Return	390 x 190 x 190 x 90mm		13.3	120	75	\$13.24
10.71 Half Height	390 x 90 x 90 mm	25	5.3	360	189	\$6.22
20.01 Standard	390 x 190 x 190 mm	12.5	15.2	90	66	\$11.39
20.42 Channel	390 x 190 x 190 mm	12.5	15.6	90	66	\$11.39
20.71 Half Height	390 x 190 x 90 mm	25	8.0	180	125	\$8.69
30.01 Standard	390 x 290 x 190 mm	25	22.2	45	45	\$15.57
50.31 Capping Tile	390 x 190 x 40 mm		6.1	288	164	\$9.83

Perth Retail Price List. May 2022

Premium Coloured Masonry from GB Masonry

Product	Size (L x W x H)	Number Per SQM	Approx Weight (KG)	Number Per Pallet	Number Per Tonne	Per Unit (inc GST)
GB Sandstone Rock Face						
10.91 HS Standard	390 x 90 x 190 mm	12.5	12.7	150	79	\$6.99
10.971 HS Half Height	390 x 90 x 190 mm	25	5.6	300	179	\$4.74
10.125 HS Corner Return	390 x 190 x 190 mm	12.5	20.0	300	50	\$15.20
20.121 HS Standard	390 x 190 x 190 mm	12.5	15.8	90	63	\$9.50
20.127 HS Half Height	190 x 190 x 90 mm	25	8.3	180	120	\$5.77
20.139 HS Corner Return	390 x 190 x 190 mm	-	18.2	90	55	\$15.20
20.142 Channel Block	390 x 190 x 190 mm	12.5	17.2	90	58	\$9.50
GB Aspect Honed						
10.01 Standard	390 x 90 x 190 mm	12.5	10.0	180	100	\$10.84
10.25 Corner Return	390 x 190 x 190 x 90 mm		13.3	120	75	\$16.63
20.01 Standard	390 x 190 x 190 mm	12.5	15.2	90	66	\$14.42
20.42 Channel	390 x 190 x 190 mm	12.5	15.6	90	64	\$14.42
GB Veneer						
10.117 Sawn Face	390 x 90 x 40 mm	50	3.1	480	323	\$4.56
10.117S Split Face	390 x 95 x 40 mm	50	3.1	480	323	\$6.18
10.117 Arcadia	390 x 90 x 40 mm	50	3.1	480	323	\$5.62
GB Vertico Split Face						
20.01 Vertico Standard	390 x 190 x 190 mm	12.5	15.0			\$14.55
Breeze Blocks						
Diamond Breeze 2 Face Honed	390 x 140 x 190 mm	12.5	12.2	108	82	\$20.95
Wedge Breeze 2 Faced Honed	390 x 140 x 190 mm	12.5	12.2	108	82	\$20.95
Cloud Breeze 2 Faced Honed	390 x 190 x 190 mm	12.5	8.4	144	119	\$20.95
Linear Breeze 2 Faced Honed	390 x 90 x 90 mm	25	4.66	360	215	\$20.95
Circle Breeze 2 Faced Honed	290 x 90 x 290 mm	12.5	9.5	128	105	\$20.95
Flower Breeze 2 Face Honed	290 x 90 x 290 mm	12.5	9.5	128	105	\$20.95
Arc Breeze 2 Face Honed	390 x 180 x 190 mm	12.5	14.3	90	70	\$18.85
Kite Breeze						
Terracotta/Dune	290 x 90 x 290 mm	25	5.8			\$51.67
White	290 x 90 x 290 mm	25	5.8			\$58.33

All prices noted are ex yard/pick up from Jandakot. For delivery to metropolitan areas in Perth a minimum delivery charge of \$152.00 for orders under 3 full pallets.

All prices noted are ex yard/pick up from Jandakot. For delivery to metropolitan areas in Perth a minimum delivery charge of \$152.00 for orders under 3 full pallets.

Perth Retail Price List. May 2022

Coloured Masonry Blocks from Austral Masonry

Product	Size (L x W x H)	Number Per SQM	Approx Weight (KG)	Number Per Pallet	Number Per Tonne	Per Unit (inc GST)
Architec Smooth						
10.01 Full length	390 x 90 x 190mm		11	144		\$2.49
10.31 Full length solid	390 x 90 x 390mm		15	108		\$3.81
10.71 Half High Full length	390 x 90 x 90mm		5.4	288		\$2.48
10.83 Half High Solid	190 x 90 x 90mm		6.8	216		\$3.10
15.01 / 15.42 Full length cored	390 x 140 x 190mm		14	120		\$4.56
15.31 Full length solid	390 x 140 x 190mm		23	72		\$5.02
15.71 Half High	390 x 140 x 90mm		5.8	240		\$4.56
15.83 Half High Solid	390 x 140 x 90mm		11.6	160		\$4.85
20.01 / 20.42 Full length Cored	390 x 190 x 190mm		16.7	90		\$4.56
20.31 Full length Solid	390 x 190 x 190mm		30.3	54		\$6.35
20.71 Half High	390 x 190 x 90mm		8.5	180		\$4.56
20.83 Half High Solid	390 x 190 x 90mm		15.2	120		\$4.85
50.31 Capping	390 x 190 x 40mm		3.5	216		\$2.89
30.01/ 30.42 Full Length Cored	390 x 290 x 190mm		26.3	120		\$7.51
Architec Split Face						
10.101 Full Length Solid	390 x 90 x 190mm		15.2	108		\$3.22
10.109 Full Length Half-High	390 x 90 x 190mm		7.6	216		\$4.15
15.101 Full Length Cored	390 x 140 x 190mm		13.5	96		\$4.15
20.101 Full Length Cored	390 x 290 x 190mm		13.5	96		\$4.74
Architec Honed						
10.01 Full length cored	390 x 90 x 190mm		11.5	144		\$5.20
10.71 Half High cored	190 x 90 x 90mm		5.4	288		\$5.20
10.83 Half High Solid	390 x 90 x 90mm		6.8	216		\$5.72
15.01 Full Length	390 x 140 x 190mm		13.5	120		\$8.49
15.71 Half High	390 x 140 x 90mm		5.8	240		\$8.49
20.01 Full Length	390 x 190 x 190mm		16.7	90.0		\$8.49
20.71 Half High	390 x 190 x 90mm		8.5	180.0		\$8.49
Vertico						
10.141 Full length Split Face Ribbed	390 x 90 x 190mm		8.0	180		\$6.64
10.162 Full length Smooth Ribbed	390 x 90 x 190mm		14.0	108		\$6.64

Perth Retail Price List. May 2022

Grey Masonry Blocks from Austral Masonry

Product	Size (L x W x H)	Number Per SQM	Approx Weight (KG)	Number Per Pallet	Number Per Tonne	Per Unit (inc GST)
Standard						
10.01 Full length	390 x 90 x 190mm		11.5	144		\$1.91
10.02 Three Quarter	290 x 90 x 190mm		8.7	192		\$1.91
10.03 Half	190 x 90 x 90mm		5.5	288		\$1.44
10.04 Quarter	90 x 90 x 190mm		3.7	360		\$1.44
10.12 Half Lintel	190 x 90 x 190mm		5.3	288		\$1.73
10.26 90 Degree Return	390 x 190 x 190mm		19.2	72		\$4.79
10.31 Full length solid	390 x 90 x 190mm		15.2	108		\$2.95
10.71 Half High Full length	390 x 90 x 90mm		5.4	288		\$1.62
10.83 Half High Solid	190 x 90 x 90mm		6.8	216		\$1.62
15.01 / 15.42 Full length cored	390 x 140 x 190mm		13.5	120		\$2.60
15.02 Three Quarter	290 x 140 x 190mm		10.8	160		\$2.60
15.03 Half	190 x 140 x 190mm		6.8	192		\$1.73
15.12 Half Length Lintel	190 x 140 x 190mm		7.1	192		\$1.73
15.22 Corner	340x 140 x 190mm		12.0	96		\$2.60
15.31 Full Length Solid	390 x 140 x 190mm		23.3	72		\$3.81
15.71 Half High	190 x 140 x 190mm		5.8	240		\$2.60
15.83 Half High Solid	390 x 40 x 90mm		11.6	160		\$3.47
15.705 Full length 2HR fire rated	390 x 140 x 190mm		16.7	96		\$2.89
15.702 3/4 2HR fire rated	290 x 140 x 190mm		14.5	128		\$2.31
20.01 / 20.42 Full length cored	390 x 190 x 190mm		16.7	90		\$2.89
20.02 Three Quarter	290 x 190 x 190mm		13.9	120		\$2.89
20.03 Half	190 x 190 x 190mm		6.9	180		\$2.17
20.15 Half Length Lintel	190 x 190 x 190mm		9.4	180		\$2.17
20.2 Bond Beam	390 x 190 x 190mm		18.9	90		\$2.89
20.31 Full length Solid	390 x 190 x 190mm		30.3	54		\$4.16
20.45 Clean out	390 x 190 x 190mm		16.7	90		\$2.89
20.71 Half high	390 x 190 x 90mm		8.5	180		\$2.89
50.31 Slim Capping	390 x 190 x 40mm		3.5	216		\$1.73
30.01 / 30.42 Full length cored	390 x 290 x 190mm		26.3	60		\$6.35
30.02 Three Quarter	290 x 290 x 190mm		25.0	64		\$6.35
30.03 Half	190 x 290 x 190mm		14.5	120		\$4.62
30.04 Quarter	90 x 290 x 190mm		11.5	100		\$2.89

All prices noted are ex yard/pick up from Jandakot. For delivery to metropolitan areas in Perth a minimum delivery charge of \$152.00 for orders under 3 full pallets.

All prices noted are ex yard/pick up from Jandakot. For delivery to metropolitan areas in Perth a minimum delivery charge of \$152.00 for orders under 3 full pallets.

Perth Retail Price List. May 2022

Accessories

Product	Size (L)	Per Unit
Crommelin		
Wet Look Sealer	6L	\$83.95
Wet Look Sealer	15L	\$208.95
Concrete Paving Sealer	6L	\$83.95
Pool Paving Sealer	6L	\$83.95
Pool Paving Sealer	15L	\$208.95
Water Based Sealer	4L	\$66.10
Limestone/Sandstone Sealer	6L	\$73.46
Limestone/Sandstone Sealer	15L	\$152.25
Natural Sealer	1L	\$23.05
Natural Sealer	4L	\$68.20
Natural Sealer	15L	\$207.85
Bitumen Paint	4L	\$31.45
Bitumen Paint	15L	\$93.45
Davco		
All Purpose - Adhesive	20KG	\$41.95
Davelastic - Adhesive	5L	\$48.25
Davelastic - Adhesive	1L	\$17.80
K10 Plus Green - Adhesive	14L	\$83.95
UltraPrime - Adhesive	1L	\$16.75
Mortex Preblended Mortar		
Grey	20KG	\$15.50
Charcoal	20KG	\$16.50
White	20KG	\$18.30
Sand, Cement and Mortar		
Brickies Lite Cement Bagged	20KG	\$11.50
Fullerprene 303 Tube	300g	\$14.65
Crommelin Slip Resistance	250ml	\$20.95
Crete Motor Ready	20kg	\$9.66
Paveset	20kg	\$16.75
Bautek Jointing Sand	20kg	\$22.73
Accessories		
Hide Skimmer Lids	342x342 - 20, 30 or 40mm	\$395.00
Brick Tape		\$28.95
Brick Picking Tool		\$21.50
Brick Tie Down Straps		\$47.30
Block Clamp	2KG	\$68.25



All prices noted are ex yard/pick up from Jandakot. For delivery to metropolitan areas in Perth a minimum delivery charge of \$152.00 for orders under 3 full pallets.

Discover More

Inspiration doesn't always come naturally, and your project is going to be there for a long time, so it's worth taking your time to enjoy the creative process. From visiting us at our Design Centres and Studios, and exploring our iVisualise Tools online, to chatting in person or over the phone, we're here to help.



Discover

Brickworks Design Centres or Studios

Your local Brickworks design centre or studio is a one-stop destination for advice and inspiration, where you can experience the quality of our product range first-hand. Our experienced consultants will guide you through the range and help you find the best possible solution for your project – within your budget.

Call.
1300 Masonry

Create

iVisualise Tools

Using artificial intelligence and digital technology, you're now able to experience colours, forms and profiles with our online colour visualisation tool. iVisualise helps make selection seamless and simple – whether you're looking for a traditional product, or something more contemporary.

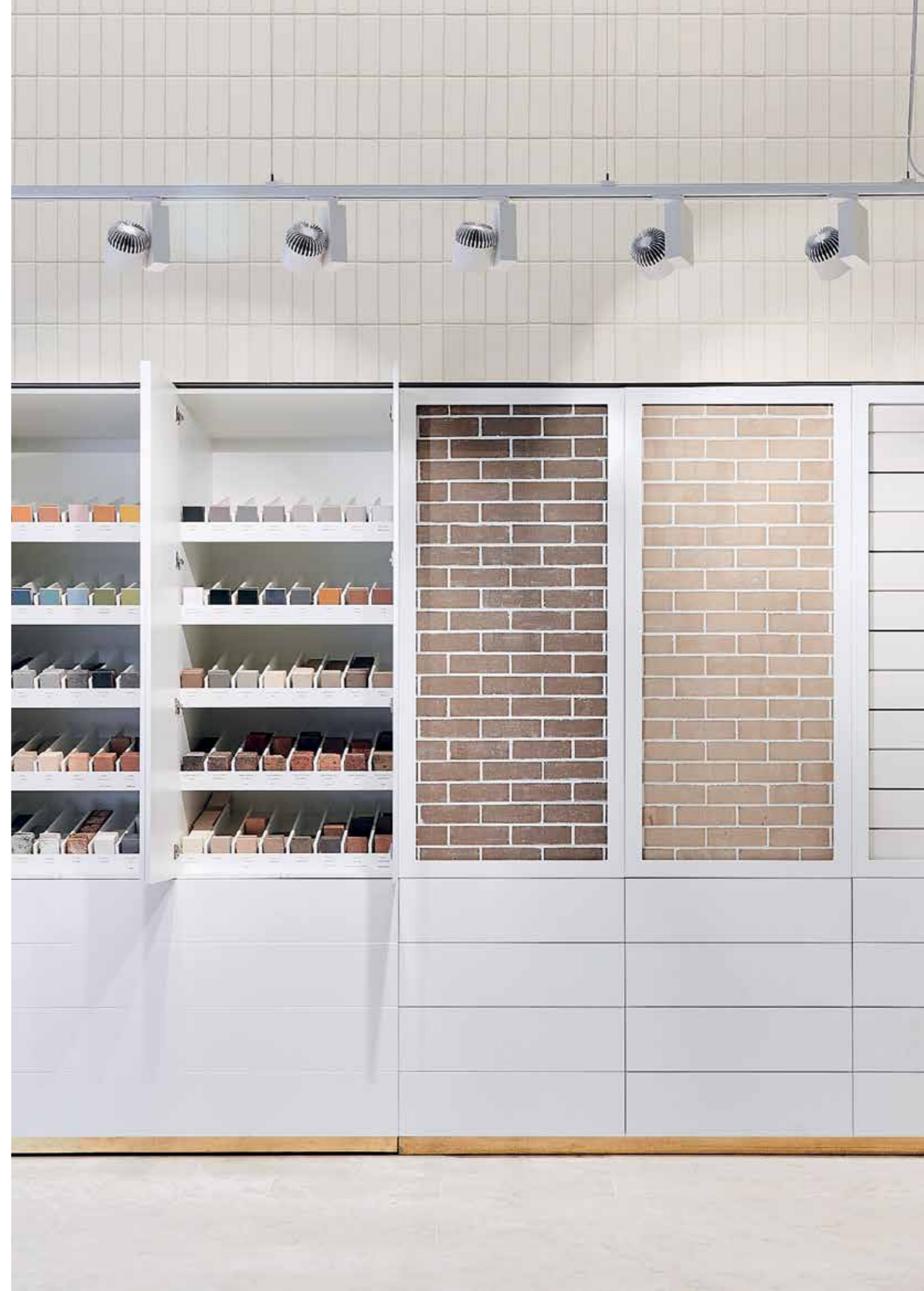
Visit.
australmasonry.com.au/ivisualise

Learn

Colour Consultations

Building or renovating a home is a major investment – and it should be an enjoyable experience for you. We can help with a one-to-one colour consultation where our experts can guide you on colour trends, the right fit and style, and ideas that will give you a genuinely individual look.

Book.
brickworks.com.au/colour



Visit. brickworks.com.au

Call. 13 BRICK

**Design and
Trade Centres**

Jandakot

Tel. 08 9395 3650
27 Jandakot Rd
Jandakot WA 6164

Osborne Park

Tel. 08 9260 2708
1/94 Hector St West
Osborne Park WA, 6017

Wangara

Tel. 08 9406 6700
18 Inspiration Dr
Wangara WA 6065

Mandurah

Tel. 08 9584 5500
53 Reserve Dr
Mandurah WA 6210

Follow Us



Paver and Natural Stone Sale Terms & Conditions

- 1. Stock colours.** Colours other than stock colours are made to order. Contact your nearest Austral Masonry office for your area's stock colour. A surcharge applies to orders less than the set minimum quantity.
- 2. Colour and texture variation.** The supply of raw materials can vary over time. In addition, the variation can occur between product types and production batches.
- 3.** We reserve the right to change the details in this publication without notice.
- 4.** For a full set of Terms & Conditions of Sale please contact your nearest Austral Masonry, Brickworks or UrbanStone sales office.

The product images shown in this brochure give a general indication of product colour for your preliminary selection. Austral Masonry recommends all customers see actual product samples at a selection centre prior to making final selections.