

May 2022

BRICKWORKS

Coffs Harbour Retail Price List

Masonry Blocks, Natural Stone,
Retaining Walls, Pavers & Accessories



Coffs Harbour Retail Price List. May 2022

Engineered Pavers from UrbanStone

| Product / Finish | Number per pack | Number Per SQM | Per SQM | Per Unit |
|--|-----------------|----------------|----------|----------|
| Provincial Saw Cut - Pearl, Ash, Graphite | | | | |
| 400 × 400 × 40 mm | 135 | 6.25 | \$61.63 | \$9.82 |
| 600 × 400 × 40 mm | 72 | 4.17 | \$61.63 | \$14.72 |
| Elegance Shot Blast - Pearl, Ash, Graphite, White Ash, Sand, Obsidian | | | | |
| 200 × 300 × 40 mm | 360 | 16.67 | \$76.96 | \$4.62 |
| 400 × 400 × 40 mm | 135 | 6.25 | \$76.96 | \$12.31 |
| 600 × 400 × 40 mm | 72 | 4.17 | \$76.96 | \$18.45 |
| Luxury Milled - Pearl, Ash, Graphite, White Ash, Sand, Obsidian | | | | |
| 200 × 300 × 40 mm | 360 | 16.67 | \$92.56 | \$5.55 |
| 400 × 400 × 40 mm | 135 | 6.25 | \$92.56 | \$14.81 |
| 600 × 400 × 40 mm | 72 | 4.17 | \$92.56 | \$22.20 |
| Opulence Honed - Pearl, Ash, Graphite, White Ash, Sand, Obsidian | | | | |
| 200 × 300 × 40 mm | 360 | 16.67 | \$102.96 | \$6.18 |
| 400 × 400 × 40 mm | 135 | 6.25 | \$102.96 | \$16.47 |
| 600 × 400 × 40 mm | 72 | 4.17 | \$102.96 | \$24.69 |

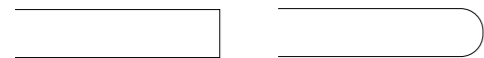
Keope Porcelain Stoneware from UrbanStone

| Product / Finish | Number per pack | Number Per SQM | Per SQM | Per Unit |
|---|-----------------|----------------|----------|----------|
| Percorsi - Pietra Di Barge, Pietra Di Combe, White, Black, Pietra Di Bagnolo | | | | |
| 600 × 600 × 20 mm | 2 | 2.77 | \$103.21 | \$37.26 |
| Soul - Walnut, Grey | | | | |
| 1200 × 300 × 20 mm | 2 | 2.77 | \$119.63 | \$43.19 |

Please note: Keope pavers have 2 pcs per pack.

Engineered Pavers Bullnose Options

Standard Straight Cut Full Round Bullnose



All prices noted are for delivery to metropolitan areas in Coffs Harbour with minimum delivery charge of \$150.00 ex GST for orders under 6 tonnes.

2 Please note: SQM = Square metre // LM = Linear metre

Coffs Harbour Retail Price List. May 2022

Granite and Limestone from UrbanStone

| Product / Finish | Number per pack | Number Per SQM | Per SQM | Per Unit |
|--|-----------------|----------------|----------|----------|
| Endurastone Flamed - Silver Granite | | | | |
| 400 × 400 × 20 mm | 100 | 6.25 | \$74.57 | \$11.93 |
| 600 × 400 × 20 mm | 100 | 4.16 | \$75.15 | \$18.06 |
| 600 × 600 × 20 mm | 50 | 2.77 | \$79.38 | \$28.66 |
| Endurastone Flamed - Grey Granite | | | | |
| 400 × 400 × 20 mm | 100 | 6.25 | \$92.26 | \$14.76 |
| 600 × 400 × 20 mm | 100 | 4.16 | \$91.15 | \$21.91 |
| 600 × 600 × 20 mm | 50 | 2.77 | \$97.07 | \$35.04 |
| Endurastone Flamed - Black Granite | | | | |
| 400 × 400 × 20 mm | 100 | 6.25 | \$119.69 | \$19.15 |
| 600 × 400 × 20 mm | 100 | 4.16 | \$148.56 | \$35.71 |
| 600 × 600 × 20 mm | 50 | 2.77 | \$179.68 | \$64.86 |
| Terre Tumbled - Marigold | | | | |
| 400 × 400 × 30 mm | 66 | 6.25 | \$91.68 | \$14.67 |
| 600 × 400 × 30 mm | 66 | 4.16 | \$100.37 | \$24.13 |
| 1.44 sq metre French Pattern | 11 | 0.69 | \$91.68 | \$130.98 |
| Additional Charges Price Inc GST | | | | |
| Minimum Cartage Surchages | \$110.00 | | | |
| Part Pallet Fee | \$55.00 | | | |

Australian Granite from UrbanStone

| Product / Finish | Number Per SQM | Per SQM | Per Unit |
|---------------------------------|----------------|----------|----------|
| Exfoliated - All Colours | | | |
| 400 × 400 × 20 mm | 6.25 | \$247.50 | \$39.60 |
| 600 × 150 × 20 mm | 11.11 | \$247.50 | \$22.27 |
| Honed - All Colours | | | |
| 400 × 400 × 20 mm | 6.25 | \$289.30 | \$46.29 |
| 600 × 150 × 20 mm | 11.11 | \$289.30 | \$26.04 |

Granite Bullnose Options

Standard Straight Cut Bullnose Full Round



All prices noted are for delivery to metropolitan areas in Coffs Harbour with minimum delivery charge of \$150.00 ex GST for orders under 6 tonnes.

3 Please note: SQM = Square metre // LM = Linear metre

Single Bullnose/Pool Copings from UrbanStone

| Product / Finish | Number per pack | Number Per LM | Per LM | Per Unit |
|--|-----------------|---------------|---------|----------|
| Endurastone Flamed - Silver Granite | | | | |
| 400 × 400 × 20 mm Bullnose | 100 | 2.5 | \$43.17 | \$17.27 |
| 600 × 400 × 20 mm Bullnose | 100 | 1.66 | \$37.73 | \$22.73 |
| Endurastone Flamed - Grey Granite | | | | |
| 400 × 400 × 20 mm Bullnose | 68 | 2.5 | \$47.76 | \$19.10 |
| 600 × 400 × 20 mm Bullnose | 68 | 1.66 | \$48.09 | \$28.97 |
| Endurastone Flamed - Black Granite | | | | |
| 400 × 400 × 20 mm Bullnose | 68 | 2.5 | \$57.34 | \$58.44 |
| 600 × 400 × 20mm Bullnose | 68 | 1.66 | \$57.73 | \$58.86 |

Australian Marble from UrbanStone

| Product / Finish | Number Per SQM | Per SQM | Per Unit |
|---|----------------|----------|----------|
| Polished - Pilbara Green & Pilbara Red | | | |
| 600 × 300 × 20 mm | 2.77 | \$467.50 | \$168.77 |
| 600 × 600 × 20 mm | 5.56 | \$467.50 | \$84.08 |
| Polished - Austral Pearl | | | |
| 600 × 300 × 20 mm | 2.77 | \$536.25 | \$193.59 |
| 600 × 600 × 20 mm | 5.56 | \$536.25 | \$96.44 |
| Antique - Austral Dream | | | |
| 600 × 300 × 20 mm | 2.77 | \$343.75 | \$124.09 |
| 600 × 600 × 20 mm | 5.56 | \$343.75 | \$61.82 |

Coffs Harbour Retail Price List. May 2022

Concrete Pavers from Austral Masonry

| Product / Colours | Size L x W x H | Number per pack | Number Per SQM | Weight Per Unit | Per SQM | Per Unit |
|---|-------------------|-----------------|----------------|-----------------|---------|----------|
| Harbourpave Smooth - Beach, Charcoal, Flame, Tan | | | | | | |
| Standard Paver | 190 x 190 x 40 mm | 540 | 27 | | \$27.97 | \$1.04 |
| Textura Slate - Ivory, Steel, Gun Metal | | | | | | |
| Standard Paver | 400 x 400 x 40 mm | 72 | 6.25 | 13.5 | \$70.11 | \$11.22 |
| Bullnose Paver | 400 x 400 x 40 mm | 72 | | 13.5 | | \$13.30 |
| Broadway Smooth - Sandune, Almond, Stone, Charcoal | | | | | | |
| 150 Paver | 150 x 300 x 60 mm | 320 | 22.2 | 5 | \$70.77 | \$3.19 |
| 300 Paver | 300 x 300 x 50 mm | 160 | 11.1 | 9.8 | \$70.00 | \$6.31 |
| 400 Paver | 400 x 400 x 45 mm | 108 | 6.25 | 16.8 | \$60.71 | \$9.71 |
| Camino Smooth - Sandune, Almond, Charcoal | | | | | | |
| Standard Paver | 230 x 115 x 50 mm | 500 | 38 | 2.8 | \$62.87 | \$1.66 |
| Plazastone Smooth - Nougat, Charcoal | | | | | | |
| 500 Paver | 500 x 500 x 45 mm | 48 | 4 | 23.6 | \$59.51 | \$14.88 |

Retaining Wall Blocks from Austral Masonry

| Product / Colours | Size L x W x H | Number per pack | Number Per SQM | Weight Per Unit | Per SQM | Per Unit |
|---|--------------------|-----------------|----------------|-----------------|---------|----------|
| Bribie Split Face - Limestone, Sydney Blend, Sandstone, Charcoal | | | | | | |
| Wall Block | 190 x 100 x 120 mm | 300 | 5.45 per lm | 4.5 | | \$4.24 |
| Arrinastone Splitface - Paperbark, Nougat, Hawkesbury Yellow, Charcoal | | | | | | |
| Wall Block | 300 x 200 x 150 mm | 100 | 22.2 | 12.8 | | \$7.20 |
| Corner (per pair) | 250 x 200 x 150 mm | 36 | | 44.4 | | \$43.68 |
| Valleystone Split Face - Nougat, Hawkesbury Yellow, Charcoal | | | | | | |
| Wall Block | 295 x 203 x 125 mm | 100 | 27.1 | 13 | | \$9.81 |
| Grandwall Split Face - Beach, Charcoal | | | | | | |
| Wall Block | 390 x 245 x 162 mm | 84 | 16 | 17.2 | | \$7.87 |
| Capping Unit | 195 x 60 x 145 mm | 272 | | 6 | | \$3.20 |
| Corner | 340 x 140 x 162 mm | 120 | | 15.5 | | \$11.16 |
| Hastings Split Face - Sepia, Beach, Alpine, Charcoal | | | | | | |
| Wall Block | 390 x 245 x 200 mm | 72 | 13 | 21.3 | | \$12.19 |
| Capping Unit | 195 x 60 x 145 mm | 272 | | 6 | | \$4.80 |
| Corner Unit | 160 x 360 x 200 mm | 96 | | 20 | | \$12.45 |
| Flinders Split Face - Beach, Charcoal | | | | | | |
| Body Block | 390 x 195 x 200 mm | | 13 | 21.5 | | \$9.42 |
| Capping Block | 390 x 195 x 200 mm | 208 | | 23.5 | | \$9.42 |
| Heron Split Face - Limestone, Sydney Blend, Sandstone, Charcoal | | | | | | |
| Wall Block | 390 x 245 x 198 mm | 60 | 13 | 24.4 | | \$15.81 |
| Capping Unit | 390 x 245 x 90 mm | 96 | | 16.6 | | \$14.91 |
| Corner Unit | 160 x 360 x 198 mm | 36 | | 22.2 | | \$18.83 |
| Hayman Smooth - Limestone, Charcoal | | | | | | |
| Wall Block | 390 x 245 x 198 mm | 60 | 13 | 23.9 | | \$15.81 |

All prices noted are for delivery to metropolitan areas in Coffs Harbour with minimum delivery charge of \$150.00 ex GST for orders under 6 tonnes.

4

Please note: SQM = Square metre // LM = Linear metre

Coffs Harbour Retail Price List. May 2022

Fire Pit Kits from Austral Masonry

| Product / Colours | Size L x W x H | Kit Includes | Each |
|--|----------------------|--|----------|
| Heron Split Face - Limestone, Sydney Blend, Sandstone, Charcoal | | | |
| Large | 1400 x 1400 x 500 mm | 16 x Standard Units, 4 x Left Corner Units, 4 x Right Corner Units, 12 x Capping Units | \$598.20 |
| Small | 1000 x 1000 x 500 mm | 8 x Standard Units, 4 x Left Corner Units, 4 x Right Corner Units, 8 x Capping Units | \$396.40 |
| Hayman Smooth - Limestone and Charcoal | | | |
| Large | 1320 x 1280 x 490 mm | 16 x Standard Units, 8 x Universal Corner Units, 12 x Capping Units | \$598.20 |
| Small | 930 x 930 x 490 mm | 8 x Standard Units, 8 x Universal Corner Units, 8 x Capping Units | \$396.40 |
| Hastings Split Face - Sepia, Beach, Alpine, Charcoal | | | |
| Large | 1320 x 1280 x 490 mm | 16 x Standard Units, 4 x Left Corner Units, 4 x Right Corner Units, 24 x Capping Units | \$409.84 |
| Small | 930 x 930 x 490 mm | 8 x Standard Units, 4 x Left Corner Units, 4 x Right Corner Units, 16 x Capping Units | \$273.92 |
| Grandwall Split Face - Beach, Charcoal | | | |
| Standard | 1320 x 1280 x 490 mm | 16 x Standard Units, 4 x Left Corner Units, 4 x Right Corner Units, 24 x Capping Units | \$292.00 |
| Bribie Split Face - Limestone, Sydney Blend, Charcoal | | | |
| Standard | 1100 x 1100 x 360 mm | 54 x Standard Units | \$220.79 |

Please note: All Fire Pit Designs must be installed with a metal insert in the centre. These are sold separately. Please contact your local Austral Masonry office for a list of recommended metal inserts and suppliers.



All prices noted are for delivery to metropolitan areas in Coffs Harbour with minimum delivery charge of \$150.00 ex GST for orders under 6 tonnes.

5

Please note: SQM = Square metre // LM = Linear metre

Coffs Harbour Retail Price List. May 2022

Concrete Sleeper Retaining Walls from Austral Masonry

| Product / Colours | Colours | Weight per Unit | Per Unit |
|----------------------------|----------------------------------|-----------------|----------|
| Explorer Smooth | | | |
| 1200 × 200 × 75 mm | Grey | 40 | \$28.33 |
| 1200 × 200 × 75 mm | Charcoal | 40 | \$30.28 |
| 1530 × 200 × 75 mm | Grey | 49 | \$31.84 |
| 1530 × 200 × 75 mm | Charcoal | 49 | \$35.74 |
| 2000 × 200 × 75 mm | Grey | 67 | \$36.85 |
| 2000 × 200 × 75 mm | Charcoal | 67 | \$44.18 |
| 2000 × 400 × 75 mm | Grey | 145 | \$102.83 |
| 2000 × 600 × 75 mm | Grey | 217 | \$134.12 |
| 2000 × 1000 × 75 mm | Grey | 362 | \$223.54 |
| Explorer Sandstone | | | |
| 1580 × 200 × 75 mm | Full/Half - Natural and Graphite | 50 | \$39.72 |
| 2000 × 200 × 75 mm | Full/Half - Natural | 65 | \$44.66 |
| 2000 × 200 × 75 mm | Full/Half - Graphite | 65 | \$48.55 |
| Explorer Timberlook | | | |
| 1580 × 200 × 75 mm | Ironbark, Gumtree | 50 | \$42.67 |
| 2000 × 200 × 75 mm | Ironbark, Gumtree | 65 | \$51.88 |
| Explorer Slate | | | |
| 1580 × 200 × 75 mm | Ironbark, Gumtree | 50 | \$44.58 |



All prices noted are for delivery to metropolitan areas in Coffs Harbour with minimum delivery charge of \$150.00 ex GST for orders under 6 tonnes.

Coffs Harbour Retail Price List. May 2022

Concrete Sleeper Posts and Brackets from Austral Masonry

| Product / Sizes | Product | Per Unit |
|---|---|----------|
| Explorer Post Joiner with deformed bar | | |
| 1.15m | Post Steel 100UC Galvanised for wall 0.4m | \$46.63 |
| 1.15m | Post Steel 100UC Galvanised for wall 0.6m | \$53.00 |
| 1.55m | Post Steel 100UC Galvanised for wall 0.8m | \$68.08 |
| 1.95m | Post Steel 100UC Galvanised for wall 1.0m | \$93.22 |
| 2.35m | Post Steel 100UC Galvanised for wall 1.2m | \$99.74 |
| 2.75m | Post Steel 100UC Galvanised for wall 1.4m | \$116.61 |
| 3.15m | Post Steel 100UC Galvanised for wall 1.6m | \$125.26 |
| 3.55m | Post Steel 100UC Galvanised for wall 1.8m | \$146.41 |
| 3.95m | Post Steel 100UC Galvanised for wall 2.0m | \$163.53 |
| 3.95m | Post Steel 150UC23.4 Galvanised for wall 2.0m | \$256.42 |
| 4.35m | Post Steel 150UC23.4 Galvanised for wall 2.2m | \$308.58 |
| 4.75m | Post Steel 150UC23.4 Galvanised for wall 2.4m | \$360.96 |
| 5.15m | Post Steel 150UC23.4 Galvanised for wall 2.6m | \$413.28 |
| 5.95m | Post Steel 150UC23.4 Galvanised for wall 3.0m | \$467.50 |
| Explorer Post End | | |
| 0.6m | Post Steel 100UC Galvanised for wall 0.2m | \$31.66 |
| 0.8m | Post Steel 100UC Galvanised for wall 0.4m | \$38.03 |
| 1.2m | Post Steel 100UC Galvanised for wall 0.6m | \$48.55 |
| 1.6m | Post Steel 100UC Galvanised for wall 0.8m | \$59.17 |
| 2.0m | Post Steel 100UC Galvanised for wall 1.0m | \$69.78 |
| 2.4m | Post Steel 100UC Galvanised for wall 1.2m | \$80.39 |
| 2.8m | Post Steel 100UC Galvanised for wall 1.4m | \$91.00 |
| 3.0m | Post Steel 100UC Galvanised for wall 1.6m | \$143.15 |
| 4.0m | Post Steel 100UC Galvanised for wall 2.0m | \$206.55 |
| Explorer Post Joiner | | |
| 0.8m | Post Steel Full Length 100UC Galvanised for wall 0.4m | \$68.52 |
| 1.2m | Post Steel Full Length 100UC Galvanised for wall 0.6m | \$84.50 |
| 1.6m | Post Steel Full Length 100UC Galvanised for wall 0.8m | \$100.48 |
| 1.8m | Post Steel Full Length 100UC Galvanised for wall 1.0m | \$116.30 |
| 2.2m | Post Steel Full Length 100UC Galvanised for wall 1.2m | \$127.04 |
| 2.6m | Post Steel Full Length 100UC Galvanised for wall 1.4m | \$148.21 |
| 3.0m | Post Steel Full Length 100UC Galvanised for wall 1.6m | \$169.41 |
| 3.4m | Post Steel Full Length 100UC Galvanised for wall 1.8m | \$190.76 |
| 3.6m | Post Steel Full Length 100UC Galvanised for wall 2.0m | \$211.77 |
| 3.0m | Post Steel 150UC23.4 Galvanised for wall 1.6m | \$343.19 |
| 3.6m | Post Steel 150UC23.4 Galvanised for wall 2.0m | \$423.32 |
| 4.0m | Post Steel 150UC23.4 Galvanised for wall 2.2m | \$475.03 |
| 4.4m | Post Steel 150UC23.4 Galvanised for wall 2.4m | \$554.92 |
| 4.8m | Post Steel 150UC23.4 Galvanised for wall 2.6m | \$604.54 |
| Fence Brackets and Accessories | | |
| | Large fence bracket 1200 × 65 × 10mm Galvanised | \$65.10 |
| | Straight Fence Bracket 150UC 6mm Galvanised | \$39.87 |
| | Straight Fence Bracket 100UC 3mm Galvanised | \$14.69 |
| | Straight Fence Bracket 100UC 6mm Galvanised | \$21.01 |
| | Offset Fence bracket 150UC 6mm Galvanised | \$39.87 |
| | Offset Fence Bracket 100UC 3mm Galvanised | \$15.78 |
| | Offset Fence Bracket 100UC 6mm Galvanised | \$23.15 |

All prices noted are for delivery to metropolitan areas in Coffs Harbour with minimum delivery charge of \$150.00 ex GST for orders under 6 tonnes.

Coffs Harbour Retail Price List. May 2022

Premium Coloured Masonry from GB Masonry

| Product | Size (W x L x H) | Number Per SQM | Number Per Pallet | Number Per Tonne | Per Unit (inc GST) |
|--|------------------------|----------------|-------------------|------------------|--------------------|
| GB Smooth | | | | | |
| 10.01 Standard | 90 x 390 x 190mm | 12.5 | 180 | 100 | \$6.73 |
| 10.03 Half | 90 x 190 x 190mm | 25 | 360 | 204 | \$5.73 |
| 10.25 Corner Return | 190 x 390 x 190 x 90mm | | 120 | 75 | \$9.27 |
| 10.31 Solid | 390 x 190 x 90 mm | 12.5 | 144 | 70 | \$7.10 |
| 10.38 Half Height Sill | 90 x 130 x 190 x 18mm | | 448 | 263 | \$5.96 |
| 10.71 Half Height | 90 x 390 x 90mm | 25 | 360 | 189 | \$5.45 |
| 20.01 Standard | 190 x 390 x 190mm | 12.5 | 90 | 66 | \$9.77 |
| 20.03 Half | 190 x 190 x 190mm | 25 | 180 | 115 | \$9.27 |
| 20.38 Half Height Skill | 245 x 100 x 190 mm | | 244 | 120 | \$8.31 |
| 20.42 Channel | 190 x 390 x 190mm | 12.5 | 90 | 64 | \$10.19 |
| 20.71 Half Height | 190 x 390 x 90mm | 25 | 180 | 125 | \$7.78 |
| 30.01 Standard | 290 x 290 x 190mm | | 60 | 50 | \$17.35 |
| 30.02 Pier Block 3/4 | 290 x 290 x 190mm | | 60 | 50 | \$17.26 |
| 30.42 Channel | 390 x 190 x 290 mm | 12.5 | 80 | 50 | \$17.35 |
| GB Split Face | | | | | |
| 10.91 Standard | 90 x 390 x 190mm | 12.5 | 150 | 85 | \$8.66 |
| 10.95 Standard Solid | 90 x 390 x 190 mm | 12.5 | 150 | 83 | \$8.80 |
| 10.93 Half | 90 x 90 x 190 mm | 25 | 300 | 182 | \$7.34 |
| 10.125 Corner Return | 190 x 390 x 190mm | | 90 | 50 | \$19.42 |
| 10.971 Half Height Solid | 90 x 390 x 90 mm | 25 | 300 | 179 | \$7.56 |
| 10.109 Half Height Cored | 90 x 190 x 90 mm | 25 | 300 | 179 | \$7.51 |
| 20.121 Standard | 190 x 390 x 190mm | 12.5 | 90 | 55 | \$11.77 |
| 20.123 Half | 190 x 190 x 190mm | 25 | 150 | 110 | \$10.91 |
| 20.127 Half Height | 190 x 390 x 90mm | 25 | 180 | 110 | \$8.86 |
| 20.142 Channel | 190 x 390 x 190mm | 12.5 | 90 | 55 | \$11.20 |
| 20.139 Corner Return | 190 x 390 x 190mm | | 90 | 50 | \$14.94 |
| 30.121 Standard | 390 x 190 x 290 mm | 12.5 | 45 | 45 | \$17.42 |
| GB Honed | | | | | |
| 10.01 Standard 1 Face Honed | 90 x 390 x 190 mm | 12.5 | 180 | 100 | \$19.83 |
| 10.01 HFE Standard 1 Face and End Honed | 90 x 390 x 190 mm | 12.5 | 180 | 100 | \$27.29 |
| 10.03 Half 1 Face Honed | 90 x 190 x 190 mm | 25 | 360 | 204 | \$18.61 |
| 10.25 Corner Return | 90 x 390 x 190 mm | | 90 | 75 | \$29.15 |
| 10.71 Half Height 1 Face Honed | 90 x 390 x 90 mm | 25 | 360 | 189 | \$14.40 |
| 10.71 HFE Half height 1 Face and End Honed | 90 x 190 x 90 mm | 25 | 360 | 189 | \$36.82 |
| 10.71 HFEE Half Height 1 Face and 2 Ends Honed | 90 x 190 x 90 mm | 25 | 360 | 189 | \$43.52 |
| 20.01 Standard 1 Face Honed | 190 x 390 x 190mm | 12.5 | 90 | 66 | \$21.86 |
| 20.01 Standard 2 Faced Honed | 190 x 390 x 190 mm | 12.5 | 224 | 120 | \$29.30 |
| 20.01 Standard 1 Face and 1 End Honed | 190 x 390 x 90 mm | 12.5 | 180 | 124 | \$29.30 |
| 20.01 Standard 1 Face and 2 Ends Honed | 190 x 390 x 190 mm | 12.5 | 60 | 50 | \$36.77 |
| 20.01 Standard 2 Faces & End Honed | 190 x 390 x 190 mm | 12.5 | 60 | 50 | \$36.77 |
| 20.03 Half | 190 x 290 x 190 mm | 25 | 180 | 115 | \$9.01 |
| 20.42 Channel | 190 x 390 x 190mm | 12.5 | 90 | 66 | \$21.86 |
| 20.71 Half Height | 190 x 390 x 90mm | 25 | 180 | 124 | \$15.40 |
| 50.31 Capping Tile - Top Face Honed | 190 x 390 x 40 mm | | 288 | 164 | \$11.57 |
| 50.31 Capping Tile - Top Face, 1 Edge | 190 x 390 x 40 mm | | 288 | 164 | \$11.12 |
| 50.31 Capping Tile - Top Face, 2 Edges | 190 x 390 x 40 mm | | 288 | 164 | \$24.96 |
| 50.31 Capping Tile - Top Face, 2 Edges, 1 End | 190 x 390 x 40 mm | | 288 | 164 | \$24.96 |
| 50.31 Capping Tile - Top Face, 2 Edges, 2 End | 190 x 390 x 40 mm | | 288 | 164 | \$24.96 |
| 50.31 Capping Tile - Top Face, 1 Edge, 1 End | 190 x 390 x 40 mm | | 288 | 164 | \$18.61 |

All prices noted are for delivery to metropolitan areas in Coffs Harbour with minimum delivery charge of \$150.00 ex GST for orders under 6 tonnes.

Coffs Harbour Retail Price List. May 2022

Premium Coloured Masonry from GB Masonry

| Product | Size (W x L x H) | Number Per SQM | Number Per Pallet | Number Per Tonne | Per Unit (inc GST) |
|---|--------------------|----------------|-------------------|------------------|--------------------|
| GB Sandstone Rock Face | | | | | |
| 10.91 HS Standard | 90 x 390 x 190 mm | 12.5 | 150 | 90 | \$9.41 |
| 10.92 HS Internal Corner | 90 x 390 x 190 mm | | 200 | 110 | \$9.41 |
| 10.92 HS Three Quarter | 90 x 190 x 190mm | 15.7 | 200 | 110 | \$9.41 |
| 10.93 HS Half | 90 x 390 x 190mm | 25 | 300 | 185 | \$8.48 |
| 10.971 HS Half Height | 90 x 390 x 190mm | 25 | 300 | 179 | \$7.53 |
| 10.125 HS Corner Return | 90 x 190 x 90 mm | | 90 | 50 | \$20.47 |
| 10.95 HS Solid | 90 x 190 x 90 mm | 12.5 | 132 | 72 | \$10.27 |
| 20.121 Standard | 190 x 390 x 190 mm | 12.5 | 60 | 90 | \$13.57 |
| 20.123 Half | 190 x 390 x 190 mm | 25 | 105 | 150 | \$12.77 |
| 20.125 Half Lintel | 190 x 390 x 90 mm | | 105 | 150 | \$13.93 |
| 20.126 3/4 Lintel | 190 x 390 x 190 mm | | 70 | 120 | \$13.57 |
| 20.127 Half Height | 190 x 390 x 190mm | 12.5 | 113 | 180 | \$10.85 |
| 20.133 Knockout | 190 x 390 x 190mm | 12.5 | 60 | 90 | \$14.55 |
| 20.139 Solid Corner Return | 190 x 290 x 190 mm | | 50 | 90 | \$17.47 |
| 20.142 Channel | 190 x 390 x 190mm | 12.5 | 60 | 90 | \$13.57 |
| 20.145 E Block | 190 x 390 x 90 mm | 12.5 | 60 | 90 | \$14.83 |
| 50.31 Capping Tile 40 mm | 190 x 390 x 40 mm | | 288 | 164 | \$4.11 |
| 50.50 Smooth Paving Slab | 390 x 390 x 65 mm | | 90 | 66 | \$14.94 |
| 41.41 Double Sided Split Capping Tile Chamfered | 260 x 390 x 65 mm | | 120 | 115 | \$14.94 |
| 41.44 Split End Capping Tile Chamfered | 260 x 390 x 65 mm | | 120 | 115 | \$14.94 |
| 50.65 Split Sided Pier Capping Tile | 325 x 325 x 65 mm | | 90 | 66 | \$14.94 |
| 50.66 Split 4 Sided Pier Capping Tile | 330 x 300 x 65 mm | | 90 | 66 | \$14.94 |
| 41.48 Split Edge Capping Tile Chamfered | 300 x 390 x 65 mm | | 120 | 66 | \$14.94 |
| 50.70 Split Step Tread | 350 x 390 x 65 mm | | 90 | 66 | \$14.94 |

All prices noted are for delivery to metropolitan areas in Coffs Harbour with minimum delivery charge of \$150.00 ex GST for orders under 6 tonnes.

Coffs Harbour Retail Price List. May 2022

Premium Coloured Masonry from GB Masonry

| Product | Size (W x L x H) | Number Per SQM | Number Per Pallet | Number Per Tonne | Per Unit (inc GST) |
|------------------------------|---------------------|-------------------|----------------------|---------------------|-----------------------|
| GB Aspect Honed | | | | | |
| 10.01 Standard | 90 x 390 x 190 mm | 12.5 | 180 | 100 | \$21.67 |
| 10.03 Half | 90 x 190 x 190 mm | 25 | 360 | 204 | \$15.70 |
| 10.25 Corner Return | 90 x 390 x 190 mm | | 120 | 75 | \$44.89 |
| 20.01 Standard | 190 x 390 x 190 mm | 12.5 | 90 | 66 | \$29.05 |
| 20.42 Channel | 190 x 390 x 190 mm | 25 | 90 | 64 | \$29.95 |
| 20.01 Honed 1 Face and 1 End | 190 x 290 x 190 mm | 12.5 | 90 | 64 | \$44.46 |
| Breeze Blocks | | | | | |
| Arc Breeze | 390 x 190 x 190mm | 12.5 | 90 | | \$33.81 |
| Diamond Breeze | 390 x 190 x 140mm | 12.5 | 108 | | \$33.81 |
| Wedge Breeze | 390 x 190 x 140mm | 12.5 | 108 | | \$33.81 |
| Flower Breeze | 290 x 290 x 90mm | 12.5 | 128 | | \$33.81 |
| Circle Breeze | 290 x 290 x 90mm | 12.5 | 128 | | \$33.81 |
| Cloud Breeze | 390 x 190 x 100mm | 12.5 | 144 | | \$33.81 |
| Linear Breeze | 390 x 90 x 90mm | 25 | 360 | | \$25.69 |
| Kite Breeze | | | | | |
| Terracotta/Dune | 90 x 290 x 290 mm | 25 | | | \$53.73 |
| White Glazed | 90 x 290 x 290 mm | 25 | | | \$60.67 |
| GB Veneer | | | | | |
| 10.117 Sawn Face | 90 x 390 x 40 mm | 50 | 480 | 323 | \$5.31 |
| 10.117S Split Face | 95 x 390 x 40 mm | 50 | 480 | 323 | \$5.31 |
| 10.117 Arcadia | 90 x 390 x 40 mm | 50 | 480 | 323 | \$2.42 |
| GB Vertico Split Face | | | | | |
| 20.01 Vertico Standard | 190 x 390 x 190 mm | 12.5 | | | \$9.02 |

Coffs Harbour Retail Price List. May 2022

Solitary Coloured Masonry from Austral Masonry

| Product | Size (W x L x H) | Number Per SQM | Number Per Pallet | Number Per Tonne | Per Unit (inc GST) |
|----------------------------|---------------------|-------------------|----------------------|---------------------|-----------------------|
| Solitary Smooth | | | | | |
| 10.01 Standard | 90 x 390 x 190mm | 12.5 | 180 | 95 | \$3.75 |
| 15.01 Standard | 140 x 190 x 190mm | | 120 | 90 | \$5.22 |
| 15.42 Channel | 140 x 390 x 190mm | | 120 | 90 | \$5.34 |
| 20.01 Standard | 190 x 390 x 190mm | 12.5 | 108 | 69 | \$6.75 |
| 20.42 Channel | 190 x 390 x 190mm | 12.5 | 108 | 69 | \$6.75 |
| 30.01 Standard | 290 x 290 x 190mm | | 72 | 51 | \$8.97 |
| 30.48 H Block | 390 x 190 x 290 mm | 12.5 | 72 | 59 | \$8.97 |
| 50.31 Capping Tile 40 mm | 190 x 390 x 40 mm | | 288 | 159 | \$2.95 |
| Solitary Split Face | | | | | |
| 10.91 Standard | 90 x 390 x 190mm | 12.5 | 144 | 79 | \$5.08 |
| 10.95 Solid | 90 x 190 x 190mm | | 144 | 72 | \$5.79 |
| 15.121 Standard | 140 x 390 x 190mm | | 120 | 72 | \$6.49 |
| 20.121 Standard | 190 x 390 x 190mm | 12.5 | 108 | 63 | \$7.15 |
| 20.139 Channel | 190 x 390 x 190mm | 12.5 | 90 | 50 | \$7.15 |
| 20.142 Channel | 190 x 390 x 190mm | 12.5 | 108 | 65 | \$7.15 |
| 30.121 Standard | 290 x 290 x 190mm | | 72 | 47 | \$10.39 |
| 30.142 Channel | 290 x 290 x 190 mm | 12.5 | 72 | 47 | \$10.39 |

All prices noted are for delivery to metropolitan areas in Coffs Harbour with minimum delivery charge of \$150.00 ex GST for orders under 6 tonnes.

All prices noted are for delivery to metropolitan areas in Coffs Harbour with minimum delivery charge of \$150.00 ex GST for orders under 6 tonnes.

Coffs Harbour Retail Price List. May 2022

Grey Masonry Blocks from Austral Masonry

| Product | Size (W x L x H) | Number Per SQM | Number Per Pallet | Number Per Tonne | Per Unit (inc GST) |
|---------------------------------|------------------------|----------------|-------------------|------------------|--------------------|
| 100 Series | | | | | |
| 10.01 Standard | 90 x 390 x 190mm | 12.5 | 180 | 115 | \$2.66 |
| 10.02 Three Quarter | 90 x 290 x 190mm | 12.5 | 240 | 122 | \$2.53 |
| 10.03 Half | 90 x 190 x 190mm | | 360 | 208 | \$1.61 |
| 10.04 Quarter | 90 x 90 x 190mm | | 720 | 357 | \$1.36 |
| 10.25 Corner Return | 190 x 390 x 190 x 90mm | | 120 | 81 | \$4.81 |
| 10.31 Solid | 90 x 390 x 190mm | 12.5 | 144 | 82 | \$3.42 |
| 10.71 Half Height | 90 x 390 x 90mm | 25 | 360 | 208 | \$2.27 |
| 10.83 Half Height Solid | 90 x 390 x 90mm | 25 | 288 | 167 | \$2.53 |
| 150 Series | | | | | |
| 15.01 Standard | 140 x 390 x 190mm | 12.5 | 144 | 89 | \$3.67 |
| 15.03 Half | 140 x 190 x 190 mm | 12.5 | 240 | 175 | \$2.22 |
| 15.12 Lintel | 140 x 390 x 190 mm | 25 | 120 | 60 | \$4.81 |
| 15.25 Corner Return | 140 x 390 x 190mm | | 105 | 62 | \$5.77 |
| 15.42 Channel | 140 x 390 x 90 mm | 25 | 168 | 93 | \$3.67 |
| 15.45 Clean Out | 140 x 390 x 90 mm | 25 | 144 | 97 | \$4.43 |
| 15.48 H Block | 140 x 390 x 190mm | 12.5 | 168 | 93 | \$3.67 |
| 15.71 Half Height | 140 x 390 x 190mm | 25 | 288 | 175 | \$2.98 |
| 15.83 Half Height Solid | 140 x 390 x 90mm | 25 | 192 | 109 | \$3.61 |
| 75.710 150mm Capping Unit | 140 x 390 x 190mm | 12.5 | 384 | 250 | \$2.24 |
| 200 Series | | | | | |
| 20.01 Standard | 190 x 390 x 190 mm | 12.5 | 126 | 75 | \$3.96 |
| 20.02 Three Quarter | 190 x 290 x 190 mm | | 144 | 85 | \$4.49 |
| 20.03 Half | 190 x 190 x 190 mm | | 180 | 133 | \$3.00 |
| 20.13 Half Lintel | 390 x 190 x 190 mm | | 90 | 55 | \$5.60 |
| 20.18 Extra Deep Lintel | 190 x 390 x 190 mm | | 180 | 127 | \$3.13 |
| 20.20 Knockout | 190 x 190 x 190 mm | | 108 | 77 | \$6.42 |
| 20.38 Sill Block | 190 x 390 x 190 mm | | 126 | 71 | \$4.69 |
| 20.42 Channel | 190 x 390 x 190mm | | 180 | 157 | \$4.45 |
| 20.48 Channel | 190 x 390 x 190 mm | | 126 | 80 | \$3.96 |
| 20.61 Clean Out | 190 x 390 x 190 mm | | 126 | 89 | \$4.37 |
| 50.45 Clean Out Tile and Spring | 190 x 390 x 40 mm | | 108 | 93 | \$4.22 |
| 20.71 Half Height | 190 x 390 x 190 mm | | 192 | 222 | \$3.67 |
| 20.73 Half Height Half | 190 x 390 x 190 mm | | 216 | 137 | \$1.96 |
| 20.739 Squint | 190 x 390 x 190 mm | | 360 | 260 | \$5.84 |
| 20.71 Half Height Half | 190 x 390 x 190 mm | | 126 | 94 | \$7.43 |
| 50.31 Capping Unit | 190 x 390 x 40 mm | | 288 | 288 | \$2.53 |
| 300 Series | | | | | |
| 30.01 Standard | 290 x 390 x 190 mm | 12.5 | 180 | 100 | \$6.90 |
| 30.02 Three Quarter | 290 x 190 x 190 mm | | 180 | 100 | \$7.53 |
| 30.18 Deep Lintel | 190 x 290 x 390 mm | | 360 | 204 | \$11.59 |
| 30.45 Clean Out | 290 x 390 x 190 mm | | 90 | 75 | \$6.65 |
| 30.48 H Block | 290 x 390 x 190 mm | | 288 | 164 | \$6.65 |
| 400 Series | | | | | |
| 400mm Single Core | 390 x 190 x 390 mm | | 45 | 54 | \$10.24 |
| Bricks | | | | | |
| Common | 230 x 76 x 110 mm | | 500 | 286 | \$1.08 |

All prices noted are for delivery to metropolitan areas in Coffs Harbour with minimum delivery charge of \$150.00 ex GST for orders under 6 tonnes.



Discover More

Inspiration doesn't always come naturally, and your project is going to be there for a long time, so it's worth taking your time to enjoy the creative process. From visiting us at our Design Centres and Studios, and exploring our iVisualise Tools online, to chatting in person or over the phone, we're here to help.



Discover

Brickworks Design Centres or Studios

Your local Brickworks design centre or studio is a one-stop destination for advice and inspiration, where you can experience the quality of our product range first-hand. Our experienced consultants will guide you through the range and help you find the best possible solution for your project – within your budget.

Call.
1300 Masonry

Create

iVisualise Tools

Using artificial intelligence and digital technology, you're now able to experience colours, forms and profiles with our online colour visualisation tool. iVisualise helps make selection seamless and simple – whether you're looking for a traditional product, or something more contemporary.

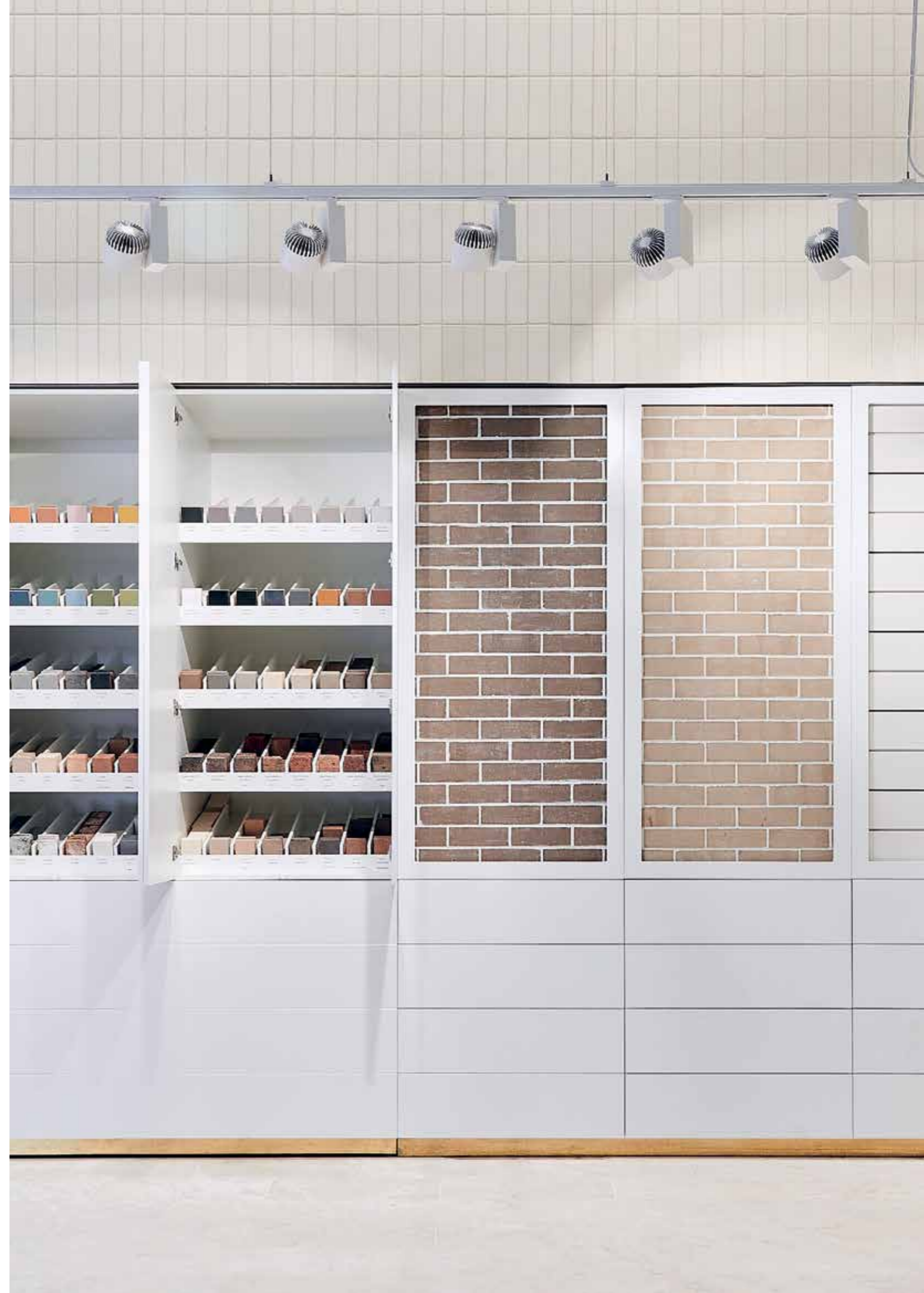
Visit.
australmasonry.com.au/ivisualise

Learn

Colour Consultations

Building or renovating a home is a major investment – and it should be an enjoyable experience for you. We can help with a one-to-one colour consultation where our experts can guide you on colour trends, the right fit and style, and ideas that will give you a genuinely individual look.

Book.
brickworks.com.au/colour



Visit. australmasonry.com.au

Call. 1300 Masonry

Design Studios

Coffs Harbour

Tel. 02 6652 3457
27 Lawson Crescent
Coffs Harbour NSW 2450

Follow Us



Paver and Natural Stone Sale Terms & Conditions

- 1. Stock colours.** Colours other than stock colours are made to order. Contact your nearest Austral Masonry office for your area's stock colour. A surcharge applies to orders less than the set minimum quantity.
- 2. Colour and texture variation.** The supply of raw materials can vary over time. In addition, the variation can occur between product types and production batches.
- 3.** We reserve the right to change the details in this publication without notice.
- 4.** For a full set of Terms & Conditions of Sale please contact your nearest Austral Masonry, Brickworks or UrbanStone sales office.

The product images shown in this brochure give a general indication of product colour for your preliminary selection. Austral Masonry recommends all customers see actual product samples at a selection centre prior to making final selections.