

May 2022

**BRICKWORKS**

# Brisbane Retail Price List

Masonry Blocks, Natural Stone,  
Retaining Walls, Pavers & Accessories



# Brisbane Retail Price List. May 2022

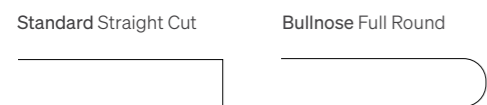
## Engineered Pavers from UrbanStone

Product / Finish	Number per pack	Number Per SQM	Per SQM	Per Unit
<b>Provincial Saw Cut - Pearl, Ash, Graphite</b>				
400 × 400 × 40 mm	135	6.25	\$78.47	\$12.55
600 × 400 × 40 mm	72	4.17	\$78.47	\$18.81
<b>Elegance Shot Blast - Pearl, Ash, Graphite, White Ash, Sand, Obsidian</b>				
200 × 300 × 40 mm	360	16.67	\$100.31	\$6.01
400 × 400 × 40 mm	135	6.25	\$100.31	\$16.04
600 × 400 × 40 mm	72	4.17	\$100.31	\$24.05
<b>Luxury Milled - Pearl, Ash, Graphite, White Ash, Sand, Obsidian</b>				
200 × 300 × 40 mm	360	16.67	\$111.23	\$6.67
400 × 400 × 40 mm	135	6.25	\$111.23	\$17.79
600 × 400 × 40 mm	72	4.17	\$111.23	\$26.67
<b>Opulence Honed - Pearl, Ash, Graphite, White Ash, Sand, Obsidian</b>				
200 × 300 × 40 mm	360	16.67	\$127.61	\$7.65
400 × 400 × 40 mm	135	6.25	\$127.61	\$20.41
600 × 400 × 40 mm	72	4.17	\$127.61	\$30.60
<b>Accolade Milled - Cloud Grey, Ivory White, Natural Beige, Golden Tan</b>				
230 × 76 × 60 mm	780	57	\$204.75	\$3.59

## Keope Porcelain Stoneware from UrbanStone

Product / Finish	Number per pack	Number Per SQM	Per SQM	Per Unit
<b>Percorsi - Pietra Di Barge, Pietra Di Combe, White, Black, Pietra Di Bagnolo</b>				
600 × 600 × 20 mm	2	2.77	\$94.29	\$34.03
<b>Soul - Walnut, Grey</b>				
1200 × 300 × 20 mm	2	2.77	\$121.47	\$43.85

## Engineered Pavers Bullnose Options



All prices noted are ex yard/pick up in Brisbane, Gold Coast, Sunshine Coast with a minimum delivery charge of \$135.96 for orders under 3 tonne

Please note: SQM = Square metre // LM = Linear metre

## Single Bullnose/Pool Copings from UrbanStone

Product / Finish	Number per pack	Number Per LM	Per LM	Per Unit
<b>Provincial Saw Cut - Pearl, Ash, Graphite</b>				
400 × 400 × 40 mm Bullnose	72	2.5	\$83.12	\$33.24
400 × 400 × 40 mm Square Edge	72	2.5	\$83.12	\$33.24
600 × 400 × 40 mm Square Edge	72	1.67	\$83.12	\$49.77
<b>Elegance Shot Blast - Pearl, Ash, Graphite, White Ash, Sand, Obsidian</b>				
400 × 400 × 40 mm Bullnose	72	2.5	\$103.74	\$41.49
400 × 400 × 40 mm Square Edge	72	2.5	\$103.74	\$41.49
600 × 400 × 40 mm Square Edge	40	1.67	\$103.74	\$62.11
<b>Luxury Milled - Pearl, Ash, Graphite, White Ash, Sand, Obsidian</b>				
400 × 400 × 40 mm Bullnose	72	2.5	\$115.88	\$46.35
400 × 400 × 40 mm Square Edge	72	2.5	\$115.88	\$46.35
600 × 400 × 40 mm Square Edge	40	1.67	\$115.88	\$69.38
<b>Opulence Honed - Pearl, Ash, Graphite, White Ash, Sand, Obsidian</b>				
400 × 400 × 40 mm Bullnose	72	2.5	\$132.26	\$52.90
400 × 400 × 40 mm Square Edge	72	2.5	\$132.26	\$52.90
600 × 400 × 40 mm Square Edge	72	1.67	\$132.26	\$79.19

# Brisbane Retail Price List. May 2022

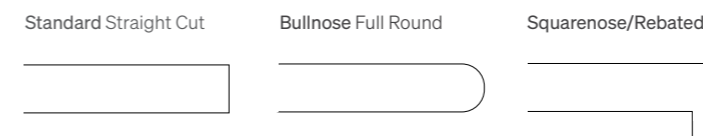
## Granite and Limestone from UrbanStone

Product / Finish	Number per pack	Number Per SQM	Per SQM	Per Unit
<b>Endurastone Flamed - Silver Granite</b>				
400 × 400 × 20 mm	100	6.25	\$70.77	\$11.32
400 × 400 × 30 mm	68	6.25	\$90.42	\$14.47
600 × 400 × 20 mm	100	4.16	\$71.32	\$17.14
600 × 400 × 30 mm	68	4.16	\$95.28	\$22.90
600 × 600 × 20 mm	50	2.77	\$75.31	\$27.09
<b>Endurastone Flamed - Grey Granite</b>				
400 × 400 × 20 mm	100	6.25	\$87.37	\$13.98
400 × 400 × 30 mm	100	6.25	\$111.15	\$17.78
600 × 400 × 20 mm	100	4.16	\$86.36	\$20.76
600 × 400 × 30 mm	100	4.16	\$111.32	\$26.76
600 × 600 × 20 mm	50	2.77	\$91.95	\$33.07
<b>Endurastone Flamed - Black Granite</b>				
400 × 400 × 20 mm	100	6.25	\$113.17	\$18.11
400 × 400 × 30 mm	100	6.25	\$135.97	\$21.75
600 × 400 × 20 mm	100	4.16	\$140.25	\$33.71
600 × 600 × 20 mm	50	2.77	\$169.44	\$60.95
<b>Endurastone Flamed - Ice Granite</b>				
400 × 400 × 20 mm	100	6.25	\$119.54	\$19.13
<b>Terre Tumbled - Marigold</b>				
400 × 400 × 30 mm	66	6.25	\$87.91	\$14.07
600 × 400 × 30 mm	66	4.16	\$91.34	\$21.96
1.44 sq metre French Pattern	11	0.69	\$108.34	\$154.77
<b>Terre Tumbled - Oryx</b>				
400 × 400 × 30 mm	66	6.25	\$87.91	\$14.07
600 × 400 × 30 mm	52	4.16	\$91.34	\$21.96

## Australian Granite from UrbanStone

Product / Finish	Number Per SQM	Per SQM	Per Unit
<b>Exfoliated - All Colours</b>			
400 × 400 × 20 mm	6.25	\$262.99	\$42.07
600 × 150 × 20 mm	11.11	\$262.99	\$23.67
<b>Honed - All Colours</b>			
400 × 400 × 20 mm	6.25	\$306.88	\$49.10
600 × 150 × 20 mm	11.11	\$306.88	\$27.62

## Granite Bullnose Options



All prices noted are ex yard/pick up in Brisbane, Gold Coast, Sunshine Coast with a minimum delivery charge of \$135.96 for orders under 3 tonne

Please note: SQM = Square metre // LM = Linear metre

## Single Bullnose/Pool Copings from UrbanStone

Product / Finish	Number per pack	Number Per LM	Per LM	Per Unit
<b>Endurastone Flamed - Silver Granite</b>				
400 × 400 × 20 mm Bullnose	100	2.5	\$40.81	\$16.32
400 × 400 × 30 mm Bullnose	68	2.5	\$45.76	\$18.30
600 × 400 × 20 mm Bullnose	100	1.66	\$70.27	\$28.11
400 × 400 × 20 mm Squarenose	100	2.5	\$35.91	\$21.63
600 × 400 × 20 mm Squarenose	100	1.66	\$79.83	\$48.09
<b>Endurastone Flamed - Grey Granite</b>				
400 × 400 × 20 mm Bullnose	68	2.5	\$45.14	\$18.06
400 × 400 × 30 mm Bullnose	68	2.5	\$53.92	\$21.57
400 × 400 × 20 / 40 mm Squarenose	68	2.5	\$56.86	\$22.74
600 × 400 × 20 mm Bullnose	68	1.66	\$41.64	\$25.08
600 × 400 × 20 mm Squarenose	68	1.66	\$79.89	\$48.12
<b>Endurastone Flamed - Black Granite</b>				
400 × 400 × 20 mm Bullnose	68	2.5	\$55.30	\$22.12
400 × 400 × 30 mm Bullnose	68	2.5	\$72.80	\$29.12
400 × 400 × 20 / 40 mm Squarenose	68	2.5	\$109.07	\$43.63
600 × 400 × 20 mm Bullnose	68	1.66	\$51.71	\$31.15
600 × 400 × 20 mm Squarenose	68	1.66	\$99.69	\$60.06
<b>Endurastone Flamed - Ice Granite</b>				
400 × 400 × 30 mm Bullnose	68	2.5	\$58.79	\$23.52

## Australian Marble from UrbanStone

Product / Finish	Number Per SQM	Per SQM	Per Unit
<b>Polished - Pilbara Green &amp; Pilbara Red</b>			
600 × 300 × 20 mm	2.77	\$493.99	\$178.33
600 × 600 × 20 mm	5.56	\$493.99	\$88.84
<b>Polished - Austral Pearl</b>			
600 × 300 × 20 mm	2.77	\$566.76	\$204.60
600 × 600 × 20 mm	5.56	\$566.76	\$101.93
<b>Antique - Austral Dream</b>			
600 × 300 × 20 mm	2.77	\$364.63	\$131.63
600 × 600 × 20 mm	5.56	\$364.63	\$65.58

## Brisbane Retail Price List. May 2022

### Retaining Wall Blocks from Austral Masonry

Product / Colours	Size L x W x H	Number per pack	Number Per SQM	Weight Per Unit	Per SQM	Per Unit
<b>Bribie Split Face - Limestone, Sydney Blend, Charcoal</b>						
Wall Block	190 x 100 x 120 mm	300	43.86	4.5		\$2.71
<b>Moreton Split Face - Limestone, Sydney Blend, Charcoal</b>						
Wall Block	390 x 200 x 200 mm	90	13	18.5		\$10.23
Capping Block	390 x 200 x 200 mm	90		22.0		\$10.64
<b>Grandwall Split Face - Beach, Charcoal* * limited stock available</b>						
Wall Block	390 x 245 x 162 mm	84	16	17.2		\$9.06
Capping Unit	195 x 245 x 65 mm	272		6		\$3.63
Corner	340 x 140 x 162 mm	120		15.5		\$12.35
<b>Fitzroy Split Face - Beach, Outback, Claypan, Sandstone, Charcoal</b>						
Wall Block	375 x 210 x 180 mm	90	14	19.23		\$9.18
<b>Daydream Split Face - Beach, Outback, Claypan, Sandstone, Charcoal</b>						
Wall Block	295 x 203 x 130 mm	100	25	12.19		\$5.71
<b>Heron Split Face - Limestone, Sydney Blend, Sandstone, Charcoal</b>						
Wall Block	390 x 245 x 198 mm	60	13	24.4		\$13.31
Capping Unit	390 x 245 x 90 mm	96		16.6		\$10.34
Corner Unit	160 x 360 x 198 mm	72		22.2		\$13.93
End Unit	160 x 245 x 198 mm	112		14.8		\$9.23
<b>Hayman Smooth - Limestone, Charcoal</b>						
Wall Block	390 x 245 x 198 mm	60	13	23.9		\$13.31
Capping Unit	195 x 245 x 90 mm	96		16.6		\$10.34
Universal Corner Unit	160 x 360 x 198 mm	36		17.2		\$13.66
<b>Keystone Split Face - Natural, Almond, Charcoal</b>						
Standard Block	455 x 315 x 200 mm	40	11	34.0		\$23.74
Flushback Block	455 x 315 x 200 mm	40	11	34.0		\$23.74
Capping Unit	455 x 310 x 100 mm	40		32.5		\$17.89
Corner	440 x 210 x 200 mm	40		36.0		\$37.15

### Fire Pit Kits from Austral Masonry

Product / Colours	Size L x W x H	Kit Includes	Each
<b>Heron Split Face - Limestone, Sydney Blend, Sandstone, Charcoal</b>			
Large	1320 x 1280 x 490 mm	16 x Standard Units, 4 x Left Corner Units, 4 x Right Corner Units, 12 x Capping Units	\$448.48
Small	930 x 930 x 490 mm	8 x Standard Units, 4 x Left Corner Units, 4 x Right Corner Units, 8 x Capping Units	\$300.64
<b>Hayman Smooth - Limestone and Charcoal</b>			
Large	1320 x 1280 x 490 mm	16 x Standard Units, 8 x Universal Corner Units, 12 x Capping Units	\$446.32
Small	930 x 930 x 490 mm	8 x Standard Units, 8 x Universal Corner Units, 8 x Capping Units	\$298.48
<b>Bribie Split Face - Limestone, Sydney Blend, Charcoal</b>			
Standard	1100 x 1100 x 360 mm	54 x Standard Units	\$146.34
<b>Daydream Split Face - Beach, Sandstone, Charcoal</b>			
Standard	1200 x 1200 x 230 mm	30 x Standard Units	\$171.30

Please note: All Fire Pit Designs must be installed with a metal insert in the centre. These are sold separately. Please contact your local Austral Masonry office for a list of recommended metal inserts and suppliers.

## Brisbane Retail Price List. May 2022

### Concrete Pavers from Austral Masonry

Product / Colours	Size L x W x H	Number per pack	Number Per SQM	Weight Per Unit	Per SQM	Per Unit
<b>Texture Slate - Ivory, Steel, Gun Metal</b>						
Standard Unit	400 x 400 x 40 mm	72	6.25	13.5	\$59.27	\$9.48
Bullnose Unit	400 x 400 x 40 mm	72		13.5	\$27.18 lm	\$10.87
<b>Harbourpave Smooth - Beach, Charcoal, Flame, Tan</b>						
Standard Unit	190 x 190 x 40 mm	540	27.7	2.9	\$31.19	\$1.13



All prices noted are ex yard/pick up in Brisbane, Gold Coast, Sunshine Coast with a minimum delivery charge of \$135.96 for orders under 3 tonne

## Brisbane Retail Price List. May 2022

### Concrete Sleeper Retaining Walls from Austral Masonry

Product / Colours	Colours	Weight per Unit	Per Unit
<b>Explorer Smooth</b>			
1200 × 200 × 75 mm	Grey	40	\$30.48
1200 × 200 × 75 mm	Charcoal	40	\$32.69
1530 × 200 × 75 mm	Grey	49	\$34.16
1530 × 200 × 75 mm	Charcoal	49	\$38.37
2000 × 200 × 75 mm	Grey	67	\$40.03
2000 × 200 × 75 mm	Charcoal	67	\$47.54
2000 × 400 × 75 mm	Grey	145	\$107.58
2000 × 600 × 75 mm	Grey	217	\$161.36
2000 × 1000 × 75 mm	Grey	362	\$268.94
<b>Explorer Sandstone</b>			
1580 × 200 × 75 mm	Full/Half - Natural and Graphite	50	\$42.84
2000 × 200 × 75 mm	Full/Half - Natural	65	\$47.45
2000 × 200 × 75 mm	Full/Half - Graphite	65	\$51.84
<b>Explorer Timberlook</b>			
1580 × 200 × 75 mm	Ironbark, Gumtree	50	\$46.83
2000 × 200 × 75 mm	Ironbark, Gumtree	65	\$57.23
<b>Explorer Slate</b>			
1580 × 200 × 75 mm	Charcoal	50	\$49.23

All prices noted are ex yard/pick up in Brisbane, Gold Coast, Sunshine Coast with a minimum delivery charge of \$135.96 for orders under 3 tonne

## Brisbane Retail Price List. May 2022

### Concrete Sleeper Posts and Brackets from Austral Masonry

Product / Sizes	Product	Per Unit
<b>Explorer Post Joiner with deformed</b>		
1.15m	Post Steel 100UC Galvanised for wall 0.4m	\$56.79
1.15m	Post Steel 100UC Galvanised for wall 0.6m	\$64.54
1.55m	Post Steel 100UC Galvanised for wall 0.8m	\$82.79
1.95m	Post Steel 100UC Galvanised for wall 1.0m	\$113.54
2.35m	Post Steel 100UC Galvanised for wall 1.2m	\$121.40
2.75m	Post Steel 100UC Galvanised for wall 1.4m	\$141.99
3.15m	Post Steel 100UC Galvanised for wall 1.6m	\$152.45
3.55m	Post Steel 100UC Galvanised for wall 1.8m	\$178.55
3.95m	Post Steel 100UC Galvanised for wall 2.0m	\$199.11
3.95m	Post Steel 150UC23.4 Galvanised for wall 2.0m	\$311.29
4.35m	Post Steel 150UC23.4 Galvanised for wall 2.2m	\$375.32
4.75m	Post Steel 150UC23.4 Galvanised for wall 2.4m	\$439.28
5.15m	Post Steel 150UC23.4 Galvanised for wall 2.6m	\$503.32
5.95m	Post Steel 150UC23.4 Galvanised for wall 3.0m	\$568.77
<b>Explorer Post End</b>		
0.6m	Post Steel 100PFC Galvanised for wall 0.2m	\$38.62
0.8m	Post Steel 100PFC Galvanised for wall 0.4m	\$46.37
1.2m	Post Steel 100PFC Galvanised for wall 0.6m	\$59.23
1.6m	Post Steel 100PFC Galvanised for wall 0.8m	\$72.14
2.0m	Post Steel 100PFC Galvanised for wall 1.0m	\$85.06
2.4m	Post Steel 100PFC Galvanised for wall 1.2m	\$97.97
2.8m	Post Steel 100PFC Galvanised for wall 1.4m	\$110.89
3.0m	Post Steel 150PFC Galvanised for wall 1.6m	\$174.29
4.0m	Post Steel 150PFC Galvanised for wall 2.0m	\$251.59
<b>Explorer Post Joiner</b>		
0.8 M	Post Steel Full Length 100UC Galvanised for wall 0.4M	\$83.61
1.2 M	Post Steel Full Length 100UC Galvanised for wall 0.6M	\$103.04
1.6 M	Post Steel Full Length 100UC Galvanised for wall 0.8M	\$122.45
1.8 M	Post Steel Full Length 100UC Galvanised for wall 1.0M	\$141.76
2.0 M	Post Steel Full Length 100UC Galvanised for wall 1.0M	\$147.69
2.2 M	Post Steel Full Length 100UC Galvanised for wall 1.2M	\$154.78
2.4 M	Post Steel Full Length 100UC Galvanised for wall 1.2M	\$169.40
2.6 M	Post Steel Full Length 100UC Galvanised for wall 1.4M	\$180.57
2.8 m	Post Steel Full Length 100UC Galvanised for wall 1.4M	\$195.06
3.0 M	Post Steel Full Length 100UC Galvanised for wall 1.6M	\$206.38
3.4 M	Post Steel Full Length 100UC Galvanised for wall 1.8M	\$232.31
3.6 M	Post Steel Full Length 100UC Galvanised for wall 2.0M	\$257.99
3.0 M	Post Steel Full Length 150UC23.4 Galvanised for Wall 1.6M	\$419.71
3.6 M	Post Steel Full Length 150UC23.4 Galvanised for Wall 2.0M	\$516.31
4.0 M	Post Steel Full Length 150UC23.4 Galvanised for Wall 2.2M	\$579.38
4.4 M	Post Steel Full Length 150UC23.4 Galvanised for Wall 2.4M	\$676.99
4.8 M	Post Steel Full Length 150UC23.4 Galvanised for Wall 2.6M	\$737.55
<b>Fence Brackets and Accessories</b>		
Large fence bracket 1200 × 65 × 10mm Galvanised *nuts and bolts included		\$79.57
Offset Fence bracket 150UC 6mm Galvanised *nuts and bolts included		\$48.75
Straight Fence Bracket 150UC 6mm Galvanised *nuts and bolts included		\$48.75
Straight Fence Bracket 100UC 3mm Galvanised *nuts and bolts included		\$17.96
Straight Fence Bracket 100UC 6mm Galvanised *nuts and bolts included		\$25.67
Offset Fence Bracket 100UC 3mm Galvanised *nuts and bolts included		\$19.27
Offset Fence Bracket 100UC 6mm Galvanised *nuts and bolts included		\$28.27

# Brisbane Retail Price List. May 2022

## Premium Coloured Masonry from GB Masonry

Product	Size (L x W x H)	Number Per SQM	Approx Weight (KG)	Number Per Pallet	Number Per Tonne	Per Unit (inc GST)
<b>GB Smooth</b>						
10.01 Standard	390 x 90 x 190mm	12.5	10.0	180	100	\$4.81
10.02 Three Quarter	290 x 90 x 190mm	15.7	7.7	240	130	\$4.14
10.03 Half	190 x 90 x 190mm	25	4.9	360	204	\$2.98
10.04 Quarter	90 x 90 x 190mm		2.4	720	417	\$2.58
10.25 Corner Return	390 x 190 x 190 x 90mm		13.3	120	75	\$7.50
10.38 Half Height Sill	130 x 90 x 190 x 18mm		3.8	448	263	\$4.55
10.71 Half Height	390 x 90 x 90mm	25	5.3	360	189	\$3.43
10.73 Half Height Half	190 x 90 x 90mm	50	2.8	720	357	\$2.16
10.725 Half Height Corner	390 x 190 x 90mm		6.7	240	149	\$4.93
20.01 Standard	390 x 190 x 190mm	12.5	15.2	90	66	\$8.43
20.02 Three Quarter	290 x 190 x 190mm	15.7	14.3	120	70	\$7.64
20.03 Half	190 x 190 x 190mm	25	8.7	180	115	\$4.56
20.13 Half Lintel	190 x 190 x 190mm		8.7	180	115	\$7.85
20.20 Knockout	390 x 190 x 190mm	12.5	15.2	90	66	\$10.99
20.21 Corner Knockout	390 x 190 x 190mm	-	15.2	90	66	\$8.98
20.25 3/4 Lintel	190 x 190 x 290mm		14.3	120	70	\$8.97
20.42 Channel	390 x 190 x 190mm	12.5	15.6	90	64	\$8.43
20.45 Cleanout Block	390 x 190 x 190mm	12.5	15.2	90	66	\$10.53
20.71 Half Height	390 x 190 x 90mm	25	8.0	180	125	\$6.32
20.73 Half Height Half	190 x 190 x 90mm	50	4.0	360	250	\$4.66
20.38 Half Height Sill	100 x 245 x 190 x 70mm		8.3	224	120	\$5.89
50.31 Capping Tile	390 x 190 x 40mm		6.1	288	164	\$3.00
30.01 Standard	390 x 290 x 190mm		20.0	60	50	\$13.62
30.02 Pier Block 3/4	290 x 290 x 190mm		16.7	80	60	\$12.09
<b>GB Split Face</b>						
10.91 Standard	390 x 90 x 190mm	12.5	12.7	150	79	\$6.51
10.125 Corner Return	390 x 190 x 190mm		20	90	50	\$15.32
10.92 Three Quarter	290 x 90 x 190mm	15.7	9.1	200	110	\$5.78
10.117 40mm Veneer	390 x 90 x 40mm	50	3.1	480	323	\$2.39
10.93 Half	190 x 90 x 190mm	25	4.8	300	208	\$2.97
10.971 Half Height	390 x 90 x 90mm	25	5.6	300	179	\$4.71
20.121 Standard	390 x 190 x 190mm	12.5	15.8	90	63	\$9.06
20.123 Half	190 x 190 x 190mm	25	9.5	150	105	\$5.60
20.125 Half Lintel	190 x 190 x 190mm		9.5	150	105	\$5.27
20.126 3/4 Lintel	290 x 190 x 190mm		14.3	120	70	\$8.93
20.127 Half Height	390 x 190 x 90mm	25	9.1	180	110	\$5.58
20.133 Knockout	390 x 190 x 190mm	12.5	15.8	90	63	\$10.82
20.142 Channel	390 x 190 x 190mm	25	16.7	90	60	\$9.08
20.139 Corner Return	390 x 190 x 190mm		20.0	90	50	\$13.49
20.145 Clean Out	390 x 190 x 190mm	25	18.2	90	55	\$11.15
30.121 Standard	390 x 290 x 190mm	12.5	22.2	45	45	\$14.89
30.127 Half Height	390 x 290 x 90mm	25	11.1	90	90	\$8.69
30.142 Channel	390 x 290 x 190mm	12.5	22.2	45	45	\$15.79
30.145 Clean Out	390 x 290 x 190mm	12.5	22.2	45	45	\$17.40

All prices noted are ex yard/pick up in Brisbane, Gold Coast, Sunshine Coast with a minimum delivery charge of \$135.96 for orders under 3 tonne

# Brisbane Retail Price List. May 2022

## Premium Coloured Masonry from GB Masonry

Product	Size (L x W x H)	Number Per SQM	Approx Weight (KG)	Number Per Pallet	Number Per Tonne	Per Unit (inc GST)
<b>GB Honed</b>						
10.01 Standard	390 x 90 x 190mm	12.5	10.0	180	100	\$8.88
10.02 Three Quarter	290 x 90 x 190mm	15.7	7.7	240	130	\$8.21
10.03 Half	190 x 90 x 190mm	25	4.9	360	204	\$7.05
10.25 Corner Return	390 x 190 x 190 x 90mm		13.3	120	75	\$15.64
10.71 Half Height	390 x 90 x 90mm	25	5.3	360	189	\$7.50
10.73 Half Height Half	190 x 90 x 90mm	50	5.3	360	189	\$6.23
10.725 Half Height Corner Return	390 x 190 x 90mm		6.7	240	149	\$13.07
20.01 Standard	390 x 190 x 190mm	12.5	15.2	90	66	\$12.78
20.02 Three Quarter	290 x 190 x 190mm	15.7	14.3	120	70	\$11.72
20.03 Half	190 x 190 x 190mm	25	8.7	180	115	\$8.63
20.13 Half Lintel	190 x 190 x 190mm		8.7	180	115	\$9.83
20.20 Knockout	390 x 190 x 190mm		15.2	90	66	\$15.06
20.42 Channel	390 x 190 x 190mm		15.6	90	64	\$12.78
20.71 Half Height	390 x 190 x 90mm	25	8.0	180	125	\$10.39
20.73 Half Height Half	190 x 190 x 90mm	50	4.0	360	250	\$8.74
50.31 Capping Tile	390 x 190 x 40mm		6.1	288	164	\$7.07
30.01 Standard	390 x 290 x 190mm	12.5	20.0	60	50	\$17.69
30.02 Three Quarter	290 x 290 x 190mm	15.7	16.7	80	60	\$16.16
<b>GB Sandstone Rock Face</b>						
10.91 HS Standard	390 x 90 x 190mm	12.5	12.7	150	79	\$8.87
10.92 HS Three Quarter	290 x 290 x 190mm	15.7	9.1	90	110	\$8.21
10.93 HS Half	190 x 90 x 190mm	25	4.8	200	208	\$4.96
10.95 Solid Veneer	390 x 90 x 190mm	12.5	14.5	480	69	\$8.94
10.971 HS Half Height	390 x 190 x 90mm	25	5.6	300	179	\$5.93
10.125 HS Corner Return	390 x 190 x 190mm	12.5	20.0	300	50	\$16.36
20.121 HS Standard	390 x 190 x 190mm	12.5	15.8	90	63	\$12.21
20.123 HS Half	190 x 190 x 190mm	25	9.5	150	105	\$7.41
20.125 Half Lintel	190 x 190 x 190mm		9.5	150	105	\$8.07
20.126 3/4 Lintel	190 x 190 x 290mm		14.3	120	70	\$13.12
20.127 HS Half Height	190 x 190 x 90mm	25	8.3	180	120	\$7.87
20.133 HS Knockout	390 x 190 x 90mm	12.5	16.7	90	60	\$13.88
20.139 HS Corner Return	390 x 190 x 190mm		18.2	90	55	\$15.80
20.142 Channel Block	390 x 190 x 190mm	12.5	17.2	90	58	\$12.21
20.145 E Block	390 x 190 x 190mm	12.5	16.7	60	90	\$13.88

All prices noted are ex yard/pick up in Brisbane, Gold Coast, Sunshine Coast with a minimum delivery charge of \$135.96 for orders under 3 tonne

# Brisbane Retail Price List. May 2022

## Premium Coloured Masonry from GB Masonry

Product	Size (L x W x H)	Number Per SQM	Approx Weight (KG)	Number Per Pallet	Number Per Tonne	Per Unit (inc GST)
<b>GB Aspect Honed</b>						
10.01 Standard Veneer	390 x 90 x 190mm	12.5	10.0	180	100	\$12.95
10.02 Three Quarter	290 x 90 x 190mm	15.7	7.7	240	130	\$12.29
10.03 Half	190 x 90 x 190mm	25	4.9	360	204	\$11.12
10.25 Corner Return	390 x 190 x 190 x 90mm		13.3	120	75	\$23.78
20.01 Standard	390 x 190 x 190mm	25	15.6	90	64	\$16.85
20.02 Three Quarter	290 x 190 x 190mm	50	14.3	120	70	\$15.79
20.03 Half	190 x 190 x 190mm		8.7	180	115	\$12.71
20.20 Knock Out	390 x 190 x 190mm	12.5	15.2	90	66	\$19.13
20.42 Channel	390 x 190 x 190mm	15.7	15.6	90	64	\$16.85
<b>GB Veneer</b>						
10.117 Sawn Face	390 x 90 x 40 mm	50	3.1	480	323	\$2.39
10.117S Split Face	390 x 95 x 40 mm	50	3.1	480	323	\$2.39
10.117 Arcadia	390 x 90 x 40 mm	50	3.1	480	323	\$3.45
<b>GB Vertico Split Face</b>						
20.01 Vertico Standard	390 x 190 x 190 mm	12.5	15.0			\$11.19
<b>Breeze Blocks</b>						
Diamond Breeze 2 face honed	390 x 140 x 190mm		12.2	108	82	\$23.70
Wedge Breeze 2 face honed	390 x 140 x 190mm		12.2	108	82	\$23.70
Flower Breeze 2 face honed	290 x 90 x 290mm		9.5	128	105	\$23.55
Cloud Breeze 2 face honed	390 x 190 x 190mm		8.4	144	119	\$23.50
Arc Breeze 2 face honed	390 x 180 x 190mm		15.5	90	65	\$23.88
Circle Breeze 2 face honed	290 x 90 x 290mm		9.5	128	105	\$23.55
Linear Breeze 2 face honed	390 x 95 x 80mm		4.7	360	213	\$20.15
<b>Kite Breeze</b>						
Terracotta/Dune	290 x 90 x 290 mm	11.1	5.8			\$54.62
White	290 x 90 x 290 mm	11.1	5.8			\$54.62

All prices noted are ex yard/pick up in Brisbane, Gold Coast, Sunshine Coast with a minimum delivery charge of \$135.96 for orders under 3 tonne

Please note: SQM = Square metre // LM = Linear metre

# Brisbane Retail Price List. May 2022

## Grey Blocks from Austral Masonry

Product Code	Description	Block Weight (kg)	Number per Tonne	Number per Pallet	Per Unit (inc GST)
<b>Alphalite Grey Blocks - 100 Series</b>					
1001AL-1	Standard	10.6	94	195	\$2.86
1002AL-1	Three Quarter	8.3	120	210	\$2.78
1003AL-1	Half	5.8	172	300	\$1.81
1004SG-1	Quarter	2.8	357	720	\$1.24
1025AL-1	Corner Return	11.7	85	120	\$4.87
1031AL-1	Solid	12.2	82	120	\$3.54
10739AL-1	Squint	11.1	90	130	\$5.24
<b>Alphalite Grey Blocks - 120 Series</b>					
1201ALU-1	Standard	12.6	79	120	\$4.73
1225AL-1	Corner Return	16.7	60	95	\$6.05
<b>Alphalite Grey Blocks - 150 Series</b>					
1501AL-1	Standard	11.2	89	120	\$3.61
1502AL-1	Three Quarter	9.8	102	168	\$3.61
1503AL-1	Half	6.3	159	240	\$2.19
1509AL-1	Control Joint	13.1	77	120	\$4.41
1510AL-1	Control Joint Half	7.7	131	240	\$2.88
1512AL-1	Lintel	17.2	58	120	\$4.96
15140AL-1	140mm HIGH	9.6	104	160	\$5.63
1520AL-1	Knockout	10.7	93	144	\$4.07
1522AL-1	7/8 Closure	10.6	94	132	\$3.87
1525AL-1	Corner Return	13.5	74	102	\$4.97
1542AL-1	Channel	11.8	85	144	\$3.63
1545AL-1	Cleanout	10.3	97	120	\$4.30
1548AL-1	H Block	12.0	83	144	\$3.57
15739AL-1	Squint	12.2	82	120	\$5.48
15745AL-1	Louvre	16.5	61	120	\$7.68
15801AL-1	2 HR Fire Rated	16.2	62	120	\$5.16
15803AL-1	Half 2 HR Fire Rated	9.9	101	200	\$3.07
<b>Alphalite Grey Blocks - 200 Series</b>					
2001AL-1	Standard	14.1	71	108	\$4.46
2002AL-1	Three Quarter	10.2	98	144	\$3.93
200242AL-1	Three Quarter Channel	10.2	98	144	\$3.93
2003AL-1	Half	8.0	125	180	\$2.59
200342AL-1	Half Channel	8.0	125	180	\$2.59
2004AL-1	Quarter	5.8	172	300	\$2.70
2009AL-1	Control Joint	15.0	67	108	\$5.01
2010AL-1	Control Joint Half	9.6	104	140	\$3.97

All prices noted are ex yard/pick up in Brisbane, Gold Coast, Sunshine Coast with a minimum delivery charge of \$135.96 for orders under 3 tonne

Please note: SQM = Square metre // LM = Linear metre

# Brisbane Retail Price List. May 2022

## Grey Blocks from Austral Masonry

Product Code	Description	Block Weight (kg)	Number per Tonne	Number per Pallet	Per Unit (inc GST)
<b>Alphalite Grey Blocks - 200 Series (continued)</b>					
2012AL-1	Trough Beam	17.6	57	90	\$7.59
2013AL-1	Half Lintel	9.7	103	195	\$2.84
20140-1	140MM High	10.6	94	120	\$5.48
2018AL-1	Lintel	15.0	67	130	\$5.19
2020AL-1	Knockout	13.7	73	108	\$4.57
2021AL-1	Corner Knockout	13.9	72	108	\$4.63
2022AL-1	7/8 Closure	12.8	78	108	\$4.41
202242AL-1	7/8 Channel	12.8	78	108	\$4.41
2025AL-1	3/4 Lintel	11.0	91	144	\$4.65
2031AL-1	Solid	31.3	32	60	\$4.94
2038AL-1	Half High Sill	7.5	133	300	\$4.45
2042AL-1	Channel	14.0	71	108	\$4.79
2045AL-1	Clean Out	12.4	81	108	\$4.27
2048AL-1	H Block	12.1	83	108	\$4.68
20739AL-1	Squint	11.0	91	90	\$5.39
20925AL-1	Single Core	15.4	65	108	\$12.06
2060AL-1	Bonded Pilaster	19.5	51	72	\$8.58
5045AL-1	Biscuit & Spring	4.5	222	192	\$3.55
<b>Alphalite Grey Blocks - 300 Series</b>					
3002AL-1	Three Quarter	15.6	64	80	\$5.89
3003AL-1	Half	11.3	88	120	\$3.96
3004AL-1	Quarter	8.3	120	210	\$2.78
3018AL-1	Lintel	20.4	49	60	\$9.29
3020AL-1	Knockout	20.6	49	60	\$7.99
3042AL-1	Channel	20.0	50	72	\$7.12
3045AL-1	Clean Out	19.3	52	72	\$7.20
3048AL-1	H Block	15.7	64	72	\$6.14
30925AL-1	Standard	18.1	55	72	\$6.49
<b>Alphalite Grey Blocks - 400 Series</b>					
40925AL-1	Standard	22.2	45	54	\$10.79
4865AL-1	Brick Single Height	3.9	256	400	\$1.39
8001AL-1	Brick Double Height	5.8	172	232	\$2.16
5031AL-1	Paver 190x390mm	6.1	164	300	\$2.74
75710AL-1	Paver 140x390mm Cap	4.8	208	400	\$1.77

All prices noted are ex yard/pick up in Brisbane, Gold Coast, Sunshine Coast with a minimum delivery charge of \$135.96 for orders under 3 tonne

Please note: SQM = Square metre // LM = Linear metre

# Brisbane Retail Price List. May 2022

## Grey Blocks from Austral Masonry

Product Code	Description	Block Weight (kg)	Number per Tonne	Number per Pallet	Per Unit (inc GST)
<b>Alphalite Grey Blocks - Half Heights</b>					
1071AL-1	Half Height Standard	4.2	238	390	\$2.50
1073AL-1	Half Height Half	2.9	345	630	\$1.54
1083AL-1	Half Height Solid	7.1	141	320	\$3.51
1571AL-1	Half Height Standard	5.8	172	200	\$3.06
1573AL-1	Half Height Half	3.0	333	400	\$2.07
2071AL-1	Half Height Standard	6.7	149	198	\$3.47
2072AL-1	Half Height Three Quarter	4.6	217	240	\$3.42
2073AL-1	Half Height Half	4.3	233	300	\$2.64
2074AL-1	Half Height Quarter	2.9	345	630	\$1.21
<b>Perp Free Grey Blocks</b>					
1503P-1	140mm Perp Free Half	6.3	159	288	\$2.17
1521P-1	140mm Perp Free Corner Knockout	12.3	81	144	\$3.76
1548P-1	140mm Perp Free H Block	11.9	84	144	\$3.74
2003P-1	190mm Perp Free Half	8.0	125	180	\$2.82
2021P-1	190mm Perp Free Corner Knockout	14.0	71	108	\$4.82
2048P-1	190mm Perp Free H Block	12.2	82	108	\$4.70
<b>High Strength Grey Blocks</b>					
2001HS-1	High Strength Standard	15.87	63	90	\$6.07
2002HS-1	High Strength Three Quarter	13.5	74	120	\$6.00
2003HS-1	High Strength Half High	8.77	114	180	\$3.83
2018HS-1	High Strength Lintel	14.93	67	90	\$5.83
2022HS-1	High Strength 7/8 Closure	12.9	78	105	\$5.62
2042HS-1	High Strength Channel	13.22	76	108	\$6.00
2045HS-1	High Strength C Block	14.1	71	90	\$5.66
2048HS-1	High Strength H Block	14	71	90	\$5.58
2071HS-1	Half Height Half	7.7	130	180	\$4.65
3048HS-1	High Strength H Block	17.65	57	60	\$7.82
Y30925HS-1	High Strength Standard	21.5	47	72	\$8.35

All prices noted are ex yard/pick up in Brisbane, Gold Coast, Sunshine Coast with a minimum delivery charge of \$135.96 for orders under 3 tonne

Please note: SQM = Square metre // LM = Linear metre

# Discover More

Inspiration doesn't always come naturally, and your project is going to be there for a long time, so it's worth taking your time to enjoy the creative process. From visiting us at our Design Centres and Studios, and exploring our iVisualise Tools online, to chatting in person or over the phone, we're here to help.



## Discover

### **Brickworks Design Centres or Studios**

Your local Brickworks design centre or studio is a one-stop destination for advice and inspiration, where you can experience the quality of our product range first-hand. Our experienced consultants will guide you through the range and help you find the best possible solution for your project – within your budget.

**Call.**  
1300 Masonry

## Create

### **iVisualise Tools**

Using artificial intelligence and digital technology, you're now able to experience colours, forms and profiles with our online colour visualisation tool. iVisualise helps make selection seamless and simple – whether you're looking for a traditional product, or something more contemporary.

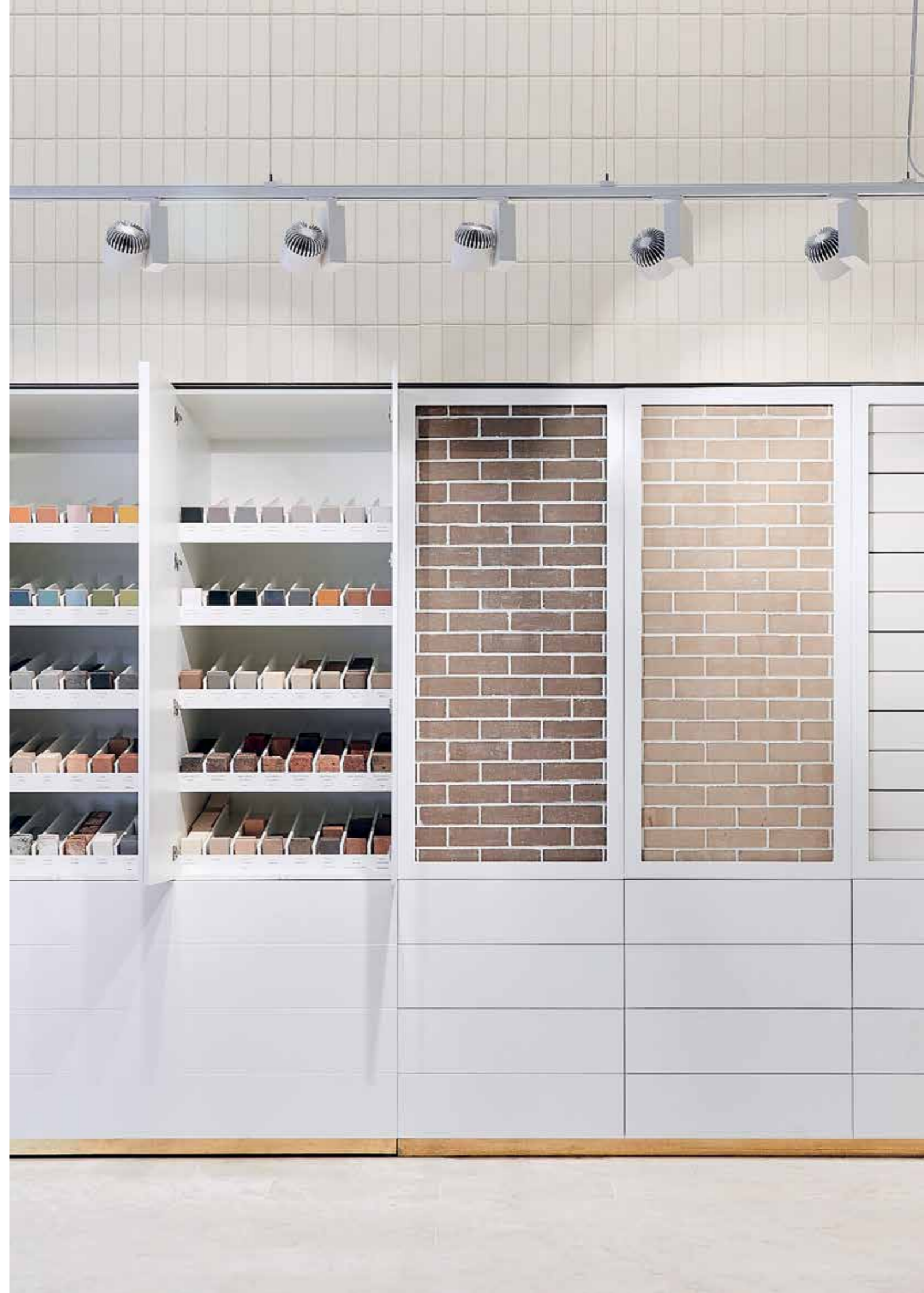
**Visit.**  
[australmasonry.com.au/ivisualise](http://australmasonry.com.au/ivisualise)

## Learn

### **Colour Consultations**

Building or renovating a home is a major investment – and it should be an enjoyable experience for you. We can help with a one-to-one colour consultation where our experts can guide you on colour trends, the right fit and style, and ideas that will give you a genuinely individual look.

**Book.**  
[brickworks.com.au/colour](http://brickworks.com.au/colour)





Visit. [australmasonry.com.au](http://australmasonry.com.au)

Call. 1300 Masonry

---

## Design Studios

### Brisbane

Tel. 07 3634 5604  
27 James St  
Fortitude Valley QLD 4006

### Sunshine Coast

Tel. 07 5293 5001  
200 Nicklin Way  
Warana QLD 4575

### Rochedale

Tel. 07 3347 2111  
105 Gardner Rd  
Rochedale QLD 4123

### Toowoomba

Tel. 07 4632 6377  
29 Mort St  
Toowoomba QLD 4350

---

## Follow Us



### Paver and Natural Stone Sale Terms & Conditions

- 1. Stock colours.** Colours other than stock colours are made to order. Contact your nearest Austral Masonry office for your area's stock colour. A surcharge applies to orders less than the set minimum quantity.
- 2. Colour and texture variation.** The supply of raw materials can vary over time. In addition, the variation can occur between product types and production batches.
- 3.** We reserve the right to change the details in this publication without notice.
- 4.** For a full set of Terms & Conditions of Sale please contact your nearest Austral Masonry, Brickworks or UrbanStone sales office.

The product images shown in this brochure give a general indication of product colour for your preliminary selection. Austral Masonry recommends all customers see actual product samples at a selection centre prior to making final selections.