

September 2021

BRICKWORKS

Sydney

Retail Price List

Masonry Blocks, Natural Stone,
Retaining Walls, Pavers & Accessories



Sydney Retail Price List. September 2021

Engineered Pavers from UrbanStone

Product / Finish	Number per pack	Number Per SQM	Per SQM	Per Unit
Provincial Saw Cut - Pearl, Ash, Graphite				
400 × 400 × 40 mm	135	6.25	\$62.06	\$9.93
600 × 400 × 40 mm	72	4.17	\$62.06	\$14.89
Elegance Shot Blast - Pearl, Ash, Graphite, White Ash, Sand, Obsidian				
200 × 300 × 40 mm	360	16.67	\$77.68	\$4.66
400 × 400 × 40 mm	135	6.25	\$77.68	\$12.44
600 × 400 × 40 mm	72	4.17	\$77.68	\$18.64
Luxury Milled - Pearl, Ash, Graphite, White Ash, Sand, Obsidian				
200 × 300 × 40 mm	360	16.67	\$92.85	\$5.57
400 × 400 × 40 mm	135	6.25	\$92.85	\$14.86
600 × 400 × 40 mm	72	4.17	\$92.85	\$22.27
Opulence Honed - Pearl, Ash, Graphite, White Ash, Sand, Obsidian				
200 × 300 × 40 mm	360	16.67	\$103.02	\$6.18
400 × 400 × 40 mm	135	6.25	\$103.02	\$16.48
600 × 400 × 40 mm	72	4.17	\$103.02	\$24.70
Accolade Milled - Cloud Grey, Ivory White, Natural Beige, Golden Tan				
230 × 76 × 60 mm	780	57	\$199.95	\$3.51

Keope Porcelain Stoneware from UrbanStone

Product / Finish	Number per pack	Number Per SQM	Per SQM	Per Unit
Percorsi - Pietra Di Barge, Pietra Di Combe, White, Black, Pietra Di Bagnolo				
600 × 600 × 20 mm	2	2.77	\$85.78	\$31.50
Soul - Walnut, Grey				
1200 × 300 × 20 mm	2	2.77	\$111.10	\$40.57

Please note: Keope pavers have 2pcs per pack.

Engineered Pavers Bullnose Options

Standard Straight Cut Full Round Bullnose



All prices noted are ex yard Horsley Park NSW with minimum delivery charge of \$132.00 for orders under 3 pallets.

2

Please note: SQM = Square metre // LM = Linear metre

Sydney Retail Price List. September 2021

Granite and Limestone from UrbanStone

Product / Finish	Number per pack	Number Per SQM	Per SQM	Per Unit
Endurastone Flamed - Silver Granite				
400 × 400 × 20 mm	100	6.25	\$73.12	\$11.70
600 × 400 × 20 mm	100	4.17	\$73.80	\$17.70
600 × 600 × 20 mm	50	2.77	\$77.80	\$28.09
Endurastone Flamed - Grey Granite				
400 × 400 × 20 mm	100	6.25	\$88.75	\$14.20
600 × 400 × 20 mm	100	4.16	\$87.36	\$21.06
600 × 600 × 20 mm	50	2.77	\$93.43	\$33.73
Endurastone Flamed - Black Granite				
400 × 400 × 20 mm	100	6.25	\$115.43	\$18.47
600 × 400 × 20 mm	100	4.16	\$126.83	\$30.49
600 × 600 × 20 mm	50	2.77	\$174.23	\$62.90
Terre Tumbled - Marigold				
400 × 400 × 30 mm	66	6.25	\$89.87	\$14.38
600 × 400 × 30 mm	66	4.16	\$98.42	\$23.66
1.44 sq metre French Pattern	11	0.69	\$-	\$132.29
Additional Charges Price Inc GST				
Minimum Cartage Surcharge	\$110.00			
Part Pallet Fee	\$55.00			

Australian Granite from UrbanStone

Product / Finish	Number Per SQM	Per SQM	Per Unit
Exfoliated - All Colours			
400 × 400 × 20 mm	6.25	\$247.50	\$39.60
600 × 150 × 20 mm	11.11	\$247.50	\$22.27
Honed - All Colours			
400 × 400 × 20 mm	6.25	\$288.75	\$46.20
600 × 150 × 20 mm	11.11	\$288.75	\$25.99

Granite Bullnose Options

Standard Straight Cut Bullnose Full Round



All prices noted are ex yard Horsley Park NSW with minimum delivery charge of \$132.00 for orders under 3 pallets.

3

Please note: SQM = Square metre // LM = Linear metre

Single Bullnose/Pool Copings from UrbanStone

Product / Finish	Number per pack	Number Per LM	Per LM	Per Unit
Endurastone Flamed - Silver Granite				
400 × 400 × 20 mm Bullnose	100	2.5	\$42.35	\$16.94
600 × 400 × 20 mm Bullnose	100	1.66	\$36.98	\$22.28
Endurastone Flamed - Grey Granite				
400 × 400 × 20 mm Bullnose	68	2.5	\$43.32	\$17.33
600 × 400 × 20 mm Bullnose	68	1.66	\$47.26	\$28.47
Endurastone Flamed - Black Granite				
400 × 400 × 20 mm Bullnose	68	2.5	\$56.65	\$22.66
600 × 400 × 20mm Bullnose	68	1.66	\$57.03	\$34.36

Australian Marble from UrbanStone

Product / Finish	Number Per SQM	Per SQM	Per Unit
Polished - Pilbara Green & Pilbara Red			
600 × 300 × 20 mm	2.77	\$467.50	\$168.77
600 × 600 × 20 mm	5.56	\$467.50	\$84.08
Polished - Austral Pearl			
600 × 300 × 20 mm	2.77	\$536.25	\$193.59
600 × 600 × 20 mm	5.56	\$536.25	\$96.44
Antique - Austral Dream			
600 × 300 × 20 mm	2.77	\$343.75	\$124.09
600 × 600 × 20 mm	5.56	\$343.75	\$61.82

Sydney Retail Price List. September 2021

Concrete Pavers from Austral Masonry

Product / Colours	Size L x W x H	Number per Pallet	Number Per SQM	Weight Per Unit	Per SQM	Per Unit
Broadway Smooth - Sandune, Almond, Charcoal						
150 Unit	150 × 300 × 60 mm	320	22.2	5	\$53.50	\$2.57
300 Unit	300 × 300 × 50 mm	160	11.1	9.8	\$55.38	\$5.29
400 Unit	400 × 400 × 45 mm	108	6.25	16.8	\$51.31	\$9.03
Camino Smooth - Sandune, Almond, Charcoal						
Standard Unit	230 × 115 × 50 mm	500	38	2.8	\$60.80	\$1.68
Interlock 80 Smooth - Natural, Almond, Charcoal						
Standard Unit	225 × 112 × 80 mm	400	40	4.1	\$76.00	\$1.87
Causeway Smooth - Natural, Almond, Charcoal						
Standard Unit	230 × 115 × 80 mm	400	38	4.3	\$102.60	\$2.83
Techpave Smooth - Natural, Almond, Charcoal						
Standard Unit	230 × 115 × 80 mm	400	38	4.3	\$72.20	\$2.04

Sydney Retail Price List. September 2021

Retaining Wall Blocks from Austral Masonry

Product / Colours	Size L x W x H	Number per Pallet	Number Per SQM	Weight Per Unit	Per SQM	Per Unit
Bribie Split Face - Limestone, Sydney Blend, Charcoal						
Wall Block	190 × 100 × 120 mm	300	43.86	4.5		\$4.21
Arrinestone Splitface - Paperback, Nougat, Hawkesbury Yellow, Charcoal						
Wall Block	300 × 200 × 150 mm	100	22.2	12.8		\$6.52
Corner (per pair)	350 × 200 × 150 mm	36		44.4		\$40.37
Valleystone Split Face - Nougat, Hawkesbury Yellow, Charcoal						
Wall Block	295 × 203 × 125 mm	100	27.1	13		\$8.57
Sydneystone Split Face - Nougat, Truffle, Charcoal						
Wall Block	390 × 245 × 198 mm	60	13	21		\$11.13
Capping Unit	390 × 245 × 90 mm	96		16		\$12.96
Corner	140 × 340 × 198 mm	72		20		\$10.91
Grandwall Split Face - Almond, Charcoal						
Wall Block	390 × 245 × 162 mm	84	16	17.2		\$8.94
Capping Unit	195 × 145 × 60 mm	272		6		\$3.57
Corner	340 × 140 × 162 mm	120		15.5		\$11.99
Hastings Split Face - Sepia, Beach, Alpine, Charcoal						
Wall Block	390 × 245 × 200 mm	72	13	21.3		\$13.13
Capping Unit	195 × 245 × 90 mm	208		8.6		\$18.76
Corner Unit	160 × 360 × 200 mm	96		20		\$6.94
Vintagestone Split Face - Hawkesbury Yellow						
Flushface Block	455 × 315 × 200 mm	32	11	39.7		\$31.38
Corner	440 × 210 × 200 mm	48		28.8		\$42.84
Heron Split Face - Limestone, Sydney Blend, Sandstone, Charcoal						
Wall Block	390 × 245 × 198 mm	60	13	24.4		\$16.06
Capping Unit	390 × 245 × 90 mm	96		16.6		\$19.14
Corner Unit	160 × 360 × 198 mm	72		22.2		\$14.66
End Unit	160 × 245 × 198 mm	112		14.8		\$15.19
Hayman Smooth - Limestone, Charcoal						
Wall Block	390 × 245 × 198 mm	60	13	23.9		\$16.06
Capping Unit	195 × 245 × 90 mm	96		16.6		\$19.14
Universal Corner Unit	160 × 360 × 198 mm	36		17.2		\$15.19
Keystone Split Face - Natural, Almond, Charcoal						
Standard Block	455 × 315 × 200 mm	40	11	38.0		\$26.77
Standard Cap	455 × 310 × 100 mm	40		24.0		\$22.58
Flushback Cap	455 × 315 × 100 mm	40		24.0		\$22.58
Moreton Split Face - Limestone, Sydney Blend, Charcoal						
Wall Block	390 × 200 × 200 mm	90	13	18.5		\$13.77
Capping Block	390 × 200 × 200 mm	90		22.0		\$13.98

All prices noted are ex yard Horsley Park NSW with minimum delivery charge of \$132.00 for orders under 3 pallets.

All prices noted are ex yard Horsley Park NSW with minimum delivery charge of \$132.00 for orders under 3 pallets.

Sydney Retail Price List. September 2021

Concrete Sleeper Retaining Walls from Austral Masonry

Product / Colours	Colours	Weight per Unit	Per Unit
Explorer Smooth			
1200 × 200 × 75 mm	Grey	40	\$31.05
1200 × 200 × 75 mm	Charcoal	40	\$33.09
1530 × 200 × 75 mm	Grey	49	\$35.13
1530 × 200 × 75 mm	Charcoal	49	\$39.21
2000 × 200 × 75 mm	Grey	67	\$40.81
2000 × 200 × 75 mm	Charcoal	67	\$48.48
2000 × 400 × 75 mm	Grey	145	\$105.24
2000 × 600 × 75 mm	Grey	217	\$157.86
2000 × 1000 × 75 mm	Grey	362	\$263.10
Explorer Sandstone			
1580 × 200 × 75 mm	Full/Half - Natural and Graphite	50	\$43.45
2000 × 200 × 75 mm	Full/Half - Natural	65	\$49.32
2000 × 200 × 75 mm	Full/Half - Graphite	65	\$53.40
Explorer Timberlook			
1580 × 200 × 75 mm	Ironbark, Gumtree	50	\$47.37
2000 × 200 × 75 mm	Ironbark, Gumtree	65	\$57.64
Explorer Slate			
1580 × 200 × 75 mm	Charcoal	50	\$49.41



All prices noted are ex yard Horsley Park NSW with minimum delivery charge of \$132.00 for orders under 3 pallets.

Sydney Retail Price List. September 2021

Concrete Sleeper Posts and Brackets from Austral Masonry

Product / Sizes	Product	Per Unit
Explorer Post Joiner with deformed bar		
1.15m	Post Steel 100UC Galvanised for wall 0.4m	\$45.90
1.15m	Post Steel 100UC Galvanised for wall 0.6m	\$52.17
1.55m	Post Steel 100UC Galvanised for wall 0.8m	\$67.15
1.95m	Post Steel 100UC Galvanised for wall 1.0m	\$91.71
2.35m	Post Steel 100UC Galvanised for wall 1.2m	\$98.22
2.75m	Post Steel 100UC Galvanised for wall 1.4m	\$114.78
3.15m	Post Steel 100UC Galvanised for wall 1.6m	\$123.41
3.55m	Post Steel 100UC Galvanised for wall 1.8m	\$144.19
3.95m	Post Steel 100UC Galvanised for wall 2.0m	\$161.14
3.95m	Post Steel 150UC23.4 Galvanised for wall 2.0m	\$253.63
4.35m	Post Steel 150UC23.4 Galvanised for wall 2.2m	\$304.63
4.75m	Post Steel 150UC23.4 Galvanised for wall 2.4m	\$355.63
5.15m	Post Steel 150UC23.4 Galvanised for wall 2.6m	\$406.70
5.95	Post Steel 150UC23.4 Galvanised for wall 3.0m	\$460.83
Explorer Post End		
0.6m	Post Steel 100UC Galvanised for wall 0.2m	\$31.07
0.8m	Post Steel 100UC Galvanised for wall 0.4m	\$37.34
1.2m	Post Steel 100UC Galvanised for wall 0.6m	\$47.67
1.6m	Post Steel 100UC Galvanised for wall 0.8m	\$58.12
2.0m	Post Steel 100UC Galvanised for wall 1.0m	\$68.57
2.4m	Post Steel 100UC Galvanised for wall 1.2m	\$79.02
2.8m	Post Steel 100UC Galvanised for wall 1.4m	\$89.47
3.0m	Post Steel 100UC Galvanised for wall 1.6m	\$140.93
4.0m	Post Steel 100UC Galvanised for wall 2.0m	\$203.20
Explorer Post Joiner		
0.8m	Post Steel Full Length 100UC Galvanised for wall 0.4M	\$67.19
0.9m	Post Steel Full Length 100UC Galvanised for wall 0.4M	\$70.11
1.2 m	Post Steel Full Length 100UC Galvanised for wall 0.6M	\$82.99
1.6m	Post Steel Full Length 100UC Galvanised for wall 0.8M	\$98.75
1.8m	Post Steel Full Length 100UC Galvanised for wall 1.0M	\$114.28
2.1m	Post Steel Full Length 100UC Galvanised for wall 1.0M	\$126.37
2.0m	Post Steel Full Length 100UC Galvanised for wall 1.2M	\$131.57
2.4m	Post Steel Full Length 100UC Galvanised for wall 1.2M	\$135.49
2.6m	Post Steel Full Length 100UC Galvanised for wall 1.4M	\$145.77
3.0m	Post Steel Full Length 100UC Galvanised for wall 1.6M	\$166.63
3.2m	Post Steel Full Length 100UC Galvanised for wall 1.6M	\$183.43
3.4m	Post Steel Full Length 100UC Galvanised for wall 1.8M	\$187.74
3.6m	Post Steel Full Length 100UC Galvanised for wall 2.0M	\$208.30
3.0m	Post Steel Full Length 150UC23.4 Galvanised for Wall 1.6M	\$342.56
3.6m	Post Steel Full Length 150UC23.4 Galvanised for Wall 2.0M	\$415.58
4.0m	Post Steel Full Length 150UC23.4 Galvanised for Wall 2.2M	\$466.34
4.4m	Post Steel Full Length 150UC23.4 Galvanised for Wall 2.4M	\$544.56
4.8m	Post Steel Full Length 150UC23.4 Galvanised for Wall 2.6M	\$593.29
Fence Brackets and Accessories		
	Large fence bracket 1200 × 65 × 10mm Galvanised	\$62.28
	Offset Fence bracket 150UC 6mm Galvanised	\$38.14
	Straight Fence Bracket 150UC 6mm Galvanised	\$38.14
	Straight Fence Bracket 100UC 3mm Galvanised	\$14.05
	Straight Fence Bracket 100UC 6mm Galvanised	\$20.09
	Offset Fence Bracket 100UC 3mm Galvanised	\$15.09

Sydney Retail Price List. September 2021

Premium Coloured Masonry from GB Masonry

Product	Size (L x W x H)	Number Per SQM	Approx Weight (KG)	Number Per Pallet	Number Per Tonne	Per Unit (inc GST)
GB Smooth						
10.01 Standard	390 x 90 x 190mm	12.5	11.0	180	100	\$6.20
10.02 Three Quarter	290 x 90 x 190mm		7.5	240		\$5.21
10.03 Half	190 x 90 x 190 mm	25	4.9	360	204	\$5.13
10.25 Corner Return	390 x 190 x 190 mm		15.2	120	75	\$8.54
10.31 Solid	390 x 190 x 190 mm		14.3	144		\$6.57
10.38 Half Height Sill	130 x 90 x 190 mm		3.8	448	263	\$5.30
10.71 Half Height	390 x 90 x 90 mm	25	5.3	360	189	\$4.91
10.73 Half Height 1/2	190 x 90 x 90 mm		2.8	720		\$5.07
10.725 Half Height Corner Return	390 x 190 x 90 mm		6.7	240		\$7.07
10.83 Solid Half Height Half	190 x 90 x 90 mm		7.2	576		\$5.49
15.01 Standard	390 x 140 x 190mm		14.3	120		\$7.70
15.02 Three Quarter	290 x 140 x 190mm		10.6	160		\$6.50
15.03 Half	190 x 140 x 190mm		7.7	240		\$6.40
15.20 Knock Out	390 x 140 x 190mm		14.3	120		\$7.70
15.25 Corner Return	390 x 140 x 190mm		15.2	105		\$8.50
15.42 Channel	390 x 140 x 190mm		14.3	120		\$7.81
15.48 H Block	390 x 140 x 190mm		14.3	120		\$7.44
15.71 Half Height	390 x 140 x 90mm		7.15	240		\$6.39
20.01 Standard	390 x 190 x 190 mm	12.5	15.2	90	66	\$8.99
20.02 Three Quarter	290 x 190 x 190mm		14.3	120		\$7.67
20.03 Half	190 x 190 x 190 mm	25	8.7	180	115	\$7.95
20.13 Half Lintel	190 x 190 x 190 mm		16.7	180		\$7.75
20.20 Knock Out	390 x 190 x 190mm		12.7	90		\$8.90
20.25 Three Quarter Lintel	190 x 190 x 290 mm		14.3	120		\$7.67
20.38 Half Height Sill	95 x 190 x 115 mm		8.3	224	120	\$7.14
20.42 Channel	390 x 190 x 190 mm	12.5	15.6	90	64	\$8.91
20.45 Clean Out Block	390 x 190 x 190 mm		15.6	90		\$10.24
20.71 Half Height	390 x 190 x 90 mm	25	8.0	180	125	\$6.70
20.73 Half Height Half	190 x 190 x 90 mm		4.0	360		\$7.35
50.31 Capping Tile	390 x 190 x 40 mm		20.0	60	50	\$14.98
30.01 Standard	390 x 290 x 190 mm		20.0	60	50	\$14.98
30.02 Pier Block 3/4	290 x 290 x 190 mm		16.7	80	60	\$14.88
30.03 Half	190 x 290 x 190 mm		14.3	120		\$12.65
30.42 Channel	390 x 290 x 190 mm		22.2	60		\$14.98
30.45 Clean Out Block	390 x 290 x 190 mm		20.0	60		\$16.66
GB Split Face						
10.91 Standard	390 x 90 x 190 mm	12.5	12.7	150	79	\$7.54
10.109 Half Height	390 x 90 x 90 mm		7.8	480		\$6.33
10.125 Corner Return	390 x 190 x 190 mm		20	90	50	\$16.69
10.92 Three Quarter	290 x 90 x 190 mm	9.1		200		\$2.53
10.117 40 mm Veneer	390 x 90 x 40 mm	50	3.1	480	323	\$4.65
10.93 Half	190 x 90 x 190 mm	25	4.8	300	208	\$6.24
10.95 Solid Veneer	390 x 90 x 190 mm		14.5	120		\$7.74
10.971 Half Height	390 x 90 x 90 mm	25	5.6	300	179	\$6.44
15.121 Standard	390 x 140 x 190 mm		14.3	105		\$12.08
15.123 Half	190 x 140 x 190 mm		7.2	210		\$5.79
20.121 Standard	390 x 190 x 190 mm	12.5	15.8	90	63	\$10.27
20.123 Half	190 x 190 x 190 mm	25	9.5	150	105	\$9.33

Sydney Retail Price List. September 2021

Premium Coloured Masonry from GB Masonry

Product	Size (L x W x H)	Number Per SQM	Approx Weight (KG)	Number Per Pallet	Number Per Tonne	Per Unit (inc GST)
GB Split Face						
20.125 Half Lintel	190 x 190 x 190 mm		9.5	150		\$8.58
20.126 Three Quarter Lintel	290 x 190 x 190 mm		14.3	120		\$8.73
20.127 Half Height	390 x 190 x 90 mm	25	9.1	180	110	\$7.62
20.133 Knock Out	390 x 190 x 190 mm		18.2	90		\$10.31
20.139 Corner Return	390 x 190 x 190 mm	25	20.0	90	50	\$13.62
20.142 Channel	390 x 190 x 190 mm	25	16.7	90	60	\$10.31
20.145 Clean Out	390 x 190 x 190 mm		18.2	90		\$10.31
30.121 Standard	390 x 290 x 190 mm	12.5	22.2	45	45	\$16.05
30.123 Half	290 x 190 x 190 mm		22.2	90		\$13.74
30.142 Channel	390 x 290 x 190 mm		22.2	45		\$16.05
30.145 Clean Out	390 x 290 x 190 mm		22.2	45		\$16.05
GB Sandstone Rock Face						
10.91 HS Standard	390 x 90 x 190 mm	12.5	12.7	150	79	\$8.54
10.92 HS Three Quarter	290 x 90 x 190 mm	15.7	9.1	200	110	\$8.48
10.93 HS Half	190 x 90 x 190 mm	25	4.8	300	208	\$8.48
10.95 Solid Veneer	390 x 90 x 190 mm	12.5	14.5	120	69	\$7.54
10.971 HS Half Height	390 x 90 x 90 mm	25	5.6	300	179	\$9.39
10.125 HS Corner Return	390 x 190 x 190 mm	12.5	20.0	90	50	\$6.74
20.121 HS Standard	390 x 190 x 190 mm	12.5	15.8	90	63	\$12.33
20.123 HS Half	190 x 190 x 190 mm	25	9.5	150	105	\$10.33
20.125 Half Lintel	190 x 190 x 190 mm		9.5	150	105	\$10.33
20.126 3/4 Lintel	190 x 190 x 290 mm		14.3	120	70	\$10.48
20.127 HS Half Height	190 x 190 x 90 mm	25	8.3	180	120	\$10.30
20.133 HS Knockout	390 x 190 x 90 mm	12.5	16.7	90	60	\$13.23
20.139 HS Corner Return	390 x 190 x 190 mm	-	18.2	90	55	\$15.82
20.142 Channel Block	390 x 190 x 190 mm	12.5	17.2	90	58	\$12.33
20.145 E Block	390 x 190 x 190 mm	12.5	16.7	90	60	\$13.89
Capping Units - Split, Smooth and Chamfer						
50.31 200MM Smooth Cap	390 x 190 x 40 mm		6.1	288		\$3.76
41.41 Double Split Edge	390 x 260 x 75 mm		15.4	120		\$13.48
41.44 Single Split Edge	350 x 260 x 75 mm		11.1	120		\$13.34
41.48 Chamfer Capper Single Split Edge	390 x 300 x 75 mm		14.7	120		\$13.46
50.50 Paver 65x390mm Smooth			19.6	90		\$13.61
50.65 Capping Tile - Split two Sides	325 x 325 x 75 mm		13.2	90		\$13.41
50.66 Capping Tile - Split four Sides	330 x 300 x 75 mm		13.2	90		\$13.41
50.70 Split Face - Step Tread	390 x 350 x 75 mm		16.9	90		\$13.53
GB Honed						
10.01 Standard	390 x 90 x 190 mm		11.00	180		\$17.60
10.01 HFE 1 Face and 1 End	390 x 90 x 190 mm		10.00	180		\$24.06
10.02 Three Quarter	290 x 90 x 190 mm		7.70	240		\$14.91
10.03 Half	190 x 90 x 190 mm		4.90	360		\$16.35
10.04 Quarter	90 x 90 x 190 mm		2.40	720		\$14.74
10.25 Corner Return	390 x 190 x 190 mm		13.30	120		\$25.78
10.31 Solid	390 x 90 x 190 mm		14.30	144		\$15.12
10.71 Half Height	390 x 90 x 90 mm		5.30	360		\$12.69
10.71 HFE 1 Face and 1 End	390 x 90 x 90 mm		5.30	360		\$19.19
10.73 Half Height Half	190 x 90 x 90 mm		2.80	720		\$14.76
10.725 Half Height Corner Return	390 x 190 x 90 mm		6.70	240		\$21.77

All prices noted are ex yard Horsley Park NSW with minimum delivery charge of \$132.00 for orders under 3 pallets.

Sydney Retail Price List. September 2021

Premium Coloured Masonry from GB Masonry

Product	Size (L x W x H)	Number Per SQM	Approx Weight (KG)	Number Per Pallet	Number Per Tonne	Per Unit (inc GST)
GB Honed						
15.01 Standard	390 x 140 x 190 mm		14.3	120		\$18.07
15.02 Three Quarter	290 x 140 x 190 mm		10.7	160		\$15.31
15.42 Channel	390 x 140 x 190 mm		14.3	120		\$18.07
20.01 Standard	390 x 190 x 190 mm		15.2	90		\$19.49
20.01 HFE 1 Face and 1 End	390 x 190 x 190 mm		15.2	90		\$25.98
20.02 Three Quarter	290 x 190 x 190 mm		14.3	120		\$16.61
20.03 Half	190 x 190 x 190 mm		8.7	180		\$16.43
20.13 Half Lintel	190 x 190 x 190 mm		8.7	180		\$16.43
20.20 Knock Out	390 x 190 x 190 mm		15.2	90		\$19.49
20.42 Channel	390 x 190 x 190 mm		15.0	90		\$19.48
20.71 Half Height	390 x 190 x 90 mm		8.0	180		\$16.41
20.73 Half Height Half	190 x 190 x 90 mm		4.0	360		\$16.29
30.01 Standard	390 x 290 x 190 mm		20.0	60		\$25.38
30.02 Three Quarter	290 x 290 x 190 mm		16.7	80		\$21.56
GB Aspect Honed						
10.01 Standard	390 x 90 x 190 mm	12.5	10.0	180	100	\$19.21
10.02 Three Quarter	290 x 90 x 190 mm		7.7	180		\$16.28
10.03 Half	190 x 90 x 190 mm	25	4.9	360	204	\$13.81
10.25 Corner Return	390 x 190 x 190 x 90 mm		13.3	120	75	\$39.54
20.01 Standard	390 x 190 x 190 mm	12.5	15.2	90	66	\$25.74
20.01 HG3FE 1 Face and 1 End	390 x 190 x 190 mm	12.5	15.63	90	64	\$27.68
20.02 Three Quarter	290 x 190 x 190 mm		14.3	120		\$21.93
20.03 Half	190 x 190 x 190 mm		8.7	180		\$21.75
20.20 Knock Out	390 x 190 x 190 mm		15.2	90		\$25.74
20.42 Channel	390 x 190 x 190 mm	12.5	15.0	90	64	\$25.74
30.01 Standard	390 x 290 x 190 mm		20.0	60		\$20.65
30.01 HFE 1 Face and 1 End	390 x 290 x 190 mm		20.0			\$26.69
Caps Honed						
50.31H Wall Cap Honed	390 x 190 x 40 mm		6.1	288		\$10.40
50.31HT* Wall Cap Honed Top Only	390 x 190 x 40 mm		6.1	288		\$14.31
50.31HTF* Wall Cap Honed 1 Long Edge	390 x 190 x 40 mm		6.1	288		\$18.22
50.31HTFE* Wall Cap Honed Top 1 Face 1 Long Edge	390 x 190 x 40 mm		6.1	288		\$19.35
50.31HTFEE Wall Cap Honed Top 1 Face 2 Long Edge	390 x 190 x 40 mm		6.1	288		\$20.49
50.31HTFF* Wall Cap Honed 2 Faces	390 x 190 x 40 mm		6.1	288		\$21.62
50.31HTFFE Wall Cap Honed 2 Faces 1 Long Edge*	390 x 190 x 40 mm		6.1	288		\$22.75
50.31HTFFEE* Wall Cap Honed 2 Faces 2 Long Edge	390 x 190 x 40 mm		6.1	288		\$25.02

All prices noted are ex yard Horsley Park NSW with minimum delivery charge of \$132.00 for orders under 3 pallets.

Please note: SQM = Square metre // LM = Linear metre

Sydney Retail Price List. September 2021

Premium Coloured Masonry from GB Masonry

Product	Size (L x W x H)	Number Per SQM	Approx Weight (KG)	Number Per Pallet	Number Per Tonne	Per Unit (inc GST)
GB Veneer						
10.117 Sawn Face	390 x 90 x 40 mm	50	3.1	480	323	\$2.50
10.117S Split Face	390 x 95 x 40 mm	50	3.1	480	323	\$2.50
10.117 Arcadia	390 x 90 x 40 mm	50	3.1	480	323	\$2.50
GB Vertico Split Face						
20.01 Vertico Standard	390 x 190 x 190 mm	12.5	15.0			\$8.20
Breeze Blocks						
Diamond Breeze	390 x 140 x 190 mm	12.5	12.20	108		\$26.13
Wedge Breeze	390 x 140 x 190 mm	12.5	12.20	108		\$26.13
Flower Breeze	290 x 90 x 290 mm	12.5	9.40	128		\$26.04
Cloud Breeze	390 x 190 x 90 mm	12.5	8.30	144		\$26.01
Arc Breeze	390 x 180 x 190 mm	12.5	14.50	90		\$26.20
Circle Breeze	290 x 90 x 290 mm	12.5	9.20	128		\$26.03
Linear Breeze	390 x 85 x 90 mm	25	4.70	360		\$19.71
Kite Breeze						
Terracotta/Dune	290 x 90 x 290 mm	25	5.8			\$51.85
White	290 x 90 x 290 mm	25	5.8			\$58.51

All prices noted are ex yard Horsley Park NSW with minimum delivery charge of \$132.00 for orders under 3 pallets.

Please note: SQM = Square metre // LM = Linear metre

Discover More

Inspiration doesn't always come naturally, and your project is going to be there for a long time, so it's worth taking your time to enjoy the creative process. From visiting us at our Design Centres and Studios, and exploring our iVisualise Tools online, to chatting in person or over the phone, we're here to help.



Discover

Brickworks Design Centres or Studios

Your local Brickworks design centre or studio is a one-stop destination for advice and inspiration, where you can experience the quality of our product range first-hand. Our experienced consultants will guide you through the range and help you find the best possible solution for your project – within your budget.

Call.
1300 Masonry

Create

iVisualise Tools

Using artificial intelligence and digital technology, you're now able to experience colours, forms and profiles with our online colour visualisation tool. iVisualise helps make selection seamless and simple – whether you're looking for a traditional product, or something more contemporary.

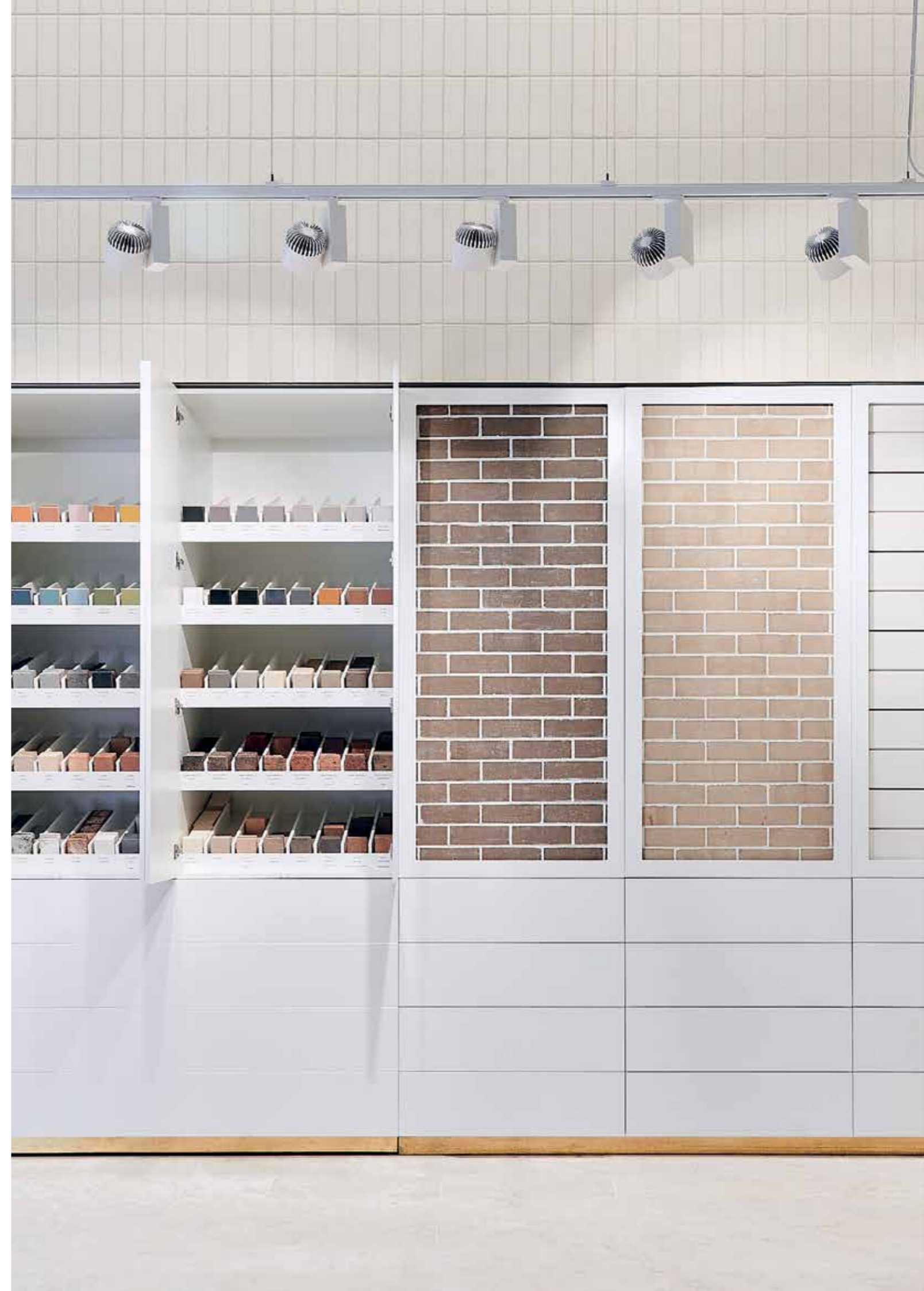
Visit.
australmasonry.com.au/ivisualise

Learn

Colour Consultations

Building or renovating a home is a major investment – and it should be an enjoyable experience for you. We can help with a one-to-one colour consultation where our experts can guide you on colour trends, the right fit and style, and ideas that will give you a genuinely individual look.

Book.
brickworks.com.au/colour



Visit. australmasonry.com.au

Call. 1300 Masonry

Design Centres

Horsley Park

Tel. 02 9840 2333
2 Latitude Road
Horsley Park NSW 2175

Beresfield

Tel. 02 4944 6711
2 Yangan Drive
Beresfield NSW 2322

Albion Park

Tel. 02 4257 1566
45 Princes Highway
Albion Park NSW 2527

Design Studios

Sydney

Tel. 02 9611 4200
2 Barrack Street
Sydney NSW 2000

Follow Us



Paver and Natural Stone Sale Terms & Conditions

- 1. Stock colours.** Colours other than stock colours are made to order. Contact your nearest Austral Masonry office for your area's stock colour. A surcharge applies to orders less than the set minimum quantity.
- 2. Colour and texture variation.** The supply of raw materials can vary over time. In addition, the variation can occur between product types and production batches.
- 3.** We reserve the right to change the details in this publication without notice.
- 4.** For a full set of Terms & Conditions of Sale please contact your nearest Austral Masonry, Brickworks or UrbanStone sales office.

The product images shown in this brochure give a general indication of product colour for your preliminary selection. Austral Masonry recommends all customers see actual product samples at a selection centre prior to making final selections.