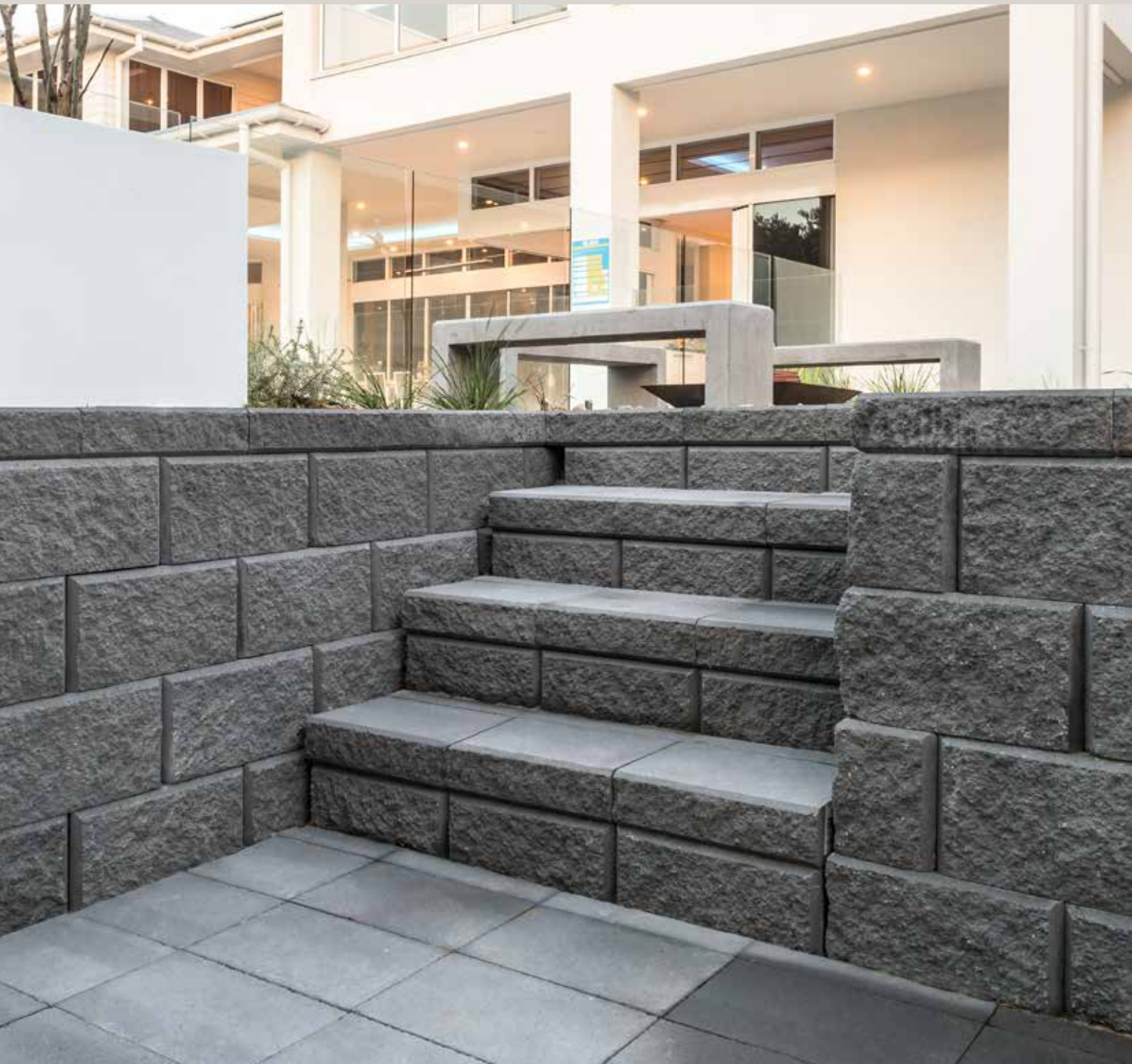


December 2022

**BRICKWORKS**

# Coffs Harbour Retail Price List

Masonry Blocks, Natural Stone,  
Retaining Walls, Pavers & Accessories



## Coffs Harbour Retail Price List. December 2022

### Engineered Pavers from UrbanStone

Product / Finish	Number per pack	Number Per SQM	Per SQM	Per Unit
<b>Provincial Saw Cut - Pearl, Ash, Graphite</b>				
400 × 400 × 40 mm	135	6.25	\$63.82	\$10.21
600 × 400 × 40 mm	72	4.17	\$63.82	\$15.30
<b>Elegance Shot Blast - Pearl, Ash, Graphite, White Ash, Sand, Obsidian</b>				
200 × 300 × 40 mm	360	16.67	\$80.04	\$4.80
400 × 400 × 40 mm	135	6.25	\$80.04	\$12.81
600 × 400 × 40 mm	72	4.17	\$80.04	\$19.19
<b>Luxury Milled - Pearl, Ash, Graphite, White Ash, Sand, Obsidian</b>				
200 × 300 × 40 mm	360	16.67	\$96.26	\$5.77
400 × 400 × 40 mm	135	6.25	\$96.26	\$15.40
600 × 400 × 40 mm	72	4.17	\$96.26	\$23.08
<b>Opulence Honed - Pearl, Ash, Graphite, White Ash, Sand, Obsidian</b>				
200 × 300 × 40 mm	360	16.67	\$107.08	\$6.42
400 × 400 × 40 mm	135	6.25	\$107.08	\$17.13
600 × 400 × 40 mm	72	4.17	\$107.08	\$25.68

### Keope Porcelain Stoneware from UrbanStone

Product / Finish	Number per pack	Number Per SQM	Per SQM	Per Unit
<b>Percorsi - Pietra Di Barge, Pietra Di Combe, White, Black, Pietra Di Bagnolo</b>				
600 × 600 × 20 mm	2	2.77	\$103.21	\$37.26
<b>Soul - Walnut, Grey</b>				
1200 × 300 × 20 mm	2	2.77	\$119.63	\$43.19

Please note: Keope pavers have 2 pcs per pack.

### Engineered Pavers Bullnose Options

Standard Straight Cut      Full Round Bullnose



All prices noted are for delivery to metropolitan areas in Coffs Harbour with minimum delivery charge of \$150.00 ex GST for orders under 6 tonnes.

2 Please note: SQM = Square metre // LM = Linear metre

## Coffs Harbour Retail Price List. December 2022

### Granite and Limestone from UrbanStone

Product / Finish	Number per pack	Number Per SQM	Per SQM	Per Unit
<b>Endurastone Flamed - Silver Granite</b>				
400 × 400 × 20mm	100	6.25	\$80.65	\$12.90
400 × 400 × 30mm	68	6.25	\$86.67	\$13.87
600 × 400 × 20mm	100	4.16	\$81.28	\$19.54
600 × 400 × 30mm	68	4.16	\$94.01	\$22.60
600 × 600 × 20mm	50	2.77	\$85.85	\$30.99
<b>Endurastone Flamed - Grey Granite</b>				
400 × 400 × 20 mm	100	6.25	\$99.78	\$15.97
600 × 400 × 20 mm	100	6.25	\$87.37	\$13.98
600 × 600 × 20 mm	50	4.16	\$98.58	\$23.70
600 × 400 × 20 mm	100	4.16	\$90.11	\$21.66
600 × 600 × 20 mm	50	2.77	\$104.99	\$37.90
<b>Endurastone Flamed - Black Granite</b>				
400 × 400 × 20mm	100	6.25	\$129.45	\$20.71
400 × 400 × 30mm	68	6.25	\$141.71	\$22.67
600 × 400 × 20mm	100	4.16	\$160.69	\$38.63
600 × 600 × 20mm	50	2.77	\$194.34	\$70.16
<b>Terre Tumbled - Marigold</b>				
400 × 400 × 30 mm	66	6.25	\$99.16	\$15.87
600 × 400 × 30 mm	66	4.16	\$108.56	\$26.10
1.44 sq metre French Pattern	11	0.69	\$99.17	\$141.66
<b>Terre Tumbled - Oryx</b>				
400 × 400 × 30 mm	66	6.25	\$99.16	\$15.87
600 × 400 × 30 mm	66	4.16	\$108.56	\$26.10
<b>Additional Charges</b>				
		Price Inc GST		
Minimum Cartage Surchages		\$110.00		
Part Pallet Fee		\$55.00		

### Australian Granite from UrbanStone

Product / Finish	Number Per SQM	Per SQM	Per Unit
<b>Exfoliated - All Colours</b>			
400 × 400 × 20 mm	6.25	\$283.14	\$45.30
600 × 150 × 20 mm	11.11	\$283.14	\$25.49
<b>Honed - All Colours</b>			
400 × 400 × 20 mm	6.25	\$330.33	\$52.85
600 × 150 × 20 mm	11.11	\$330.33	\$29.73

### Granite Bullnose Options

Standard Straight Cut      Bullnose Full Round



All prices noted are for delivery to metropolitan areas in Coffs Harbour with minimum delivery charge of \$150.00 ex GST for orders under 6 tonnes.

3 Please note: SQM = Square metre // LM = Linear metre

### Single Bullnose/Pool Copings from UrbanStone

Product / Finish	Number per pack	Number Per LM	Per LM	Per Unit
<b>Endurastone Flamed - Silver Granite</b>				
400 × 400 × 20mm Bullnose	100	2.5	\$46.69	\$18.68
400 × 400 × 30mm Bullnose	68	2.5	\$47.94	\$19.18
600 × 400 × 20mm Bullnose	100	1.66	\$40.81	\$24.59
<b>Endurastone Flamed - Grey Granite</b>				
400 × 400 × 20mm Bullnose	68	2.5	\$51.66	\$20.66
400 × 400 × 30mm Bullnose	68	1.66	\$51.44	\$20.58
600 × 400 × 20mm Bullnose	100	1.66	\$52.01	\$31.33
400 × 400 × 20mm Rebate Bullnose	100	1.66	\$59.40	\$23.76
<b>Endurastone Flamed - Black Granite</b>				
400 × 400 × 20mm Bullnose	68	2.5	\$63.21	\$25.28
400 × 400 × 30mm Bullnose	68	2.5	\$64.49	\$25.80
600 × 400 × 20mm Bullnose	100	1.66	\$63.66	\$38.35

### Australian Marble from UrbanStone

Product / Finish	Number Per SQM	Per SQM	Per Unit
<b>Polished - Pilbara Green &amp; Pilbara Red</b>			
600 × 300 × 20 mm	2.77	\$534.82	\$128.56
600 × 600 × 20 mm	5.56	\$534.82	\$85.57
<b>Polished - Austral Pearl</b>			
600 × 300 × 20 mm	2.77	\$613.47	\$147.47
600 × 600 × 20 mm	5.56	\$613.47	\$98.16
<b>Antique - Austral Dream</b>			
1.44m2 French Pattern	2.77	\$393.25	\$94.53

## Coffs Harbour Retail Price List. December 2022

### Concrete Pavers from Austral Masonry

Product / Colours	Size L x W x H	Number per pack	Number Per SQM	Weight Per Unit	Per SQM	Per Unit
<b>Harbourpave Smooth - Beach, Charcoal, Flame, Tan</b>						
Standard Paver	190 x 190 x 40 mm	540	27		\$29.08	\$1.08
<b>Broadway Smooth - Sandune, Almond, Stone, Charcoal</b>						
150 Paver	150 x 300 x 60 mm	320	22.2	5	\$73.60	\$3.32
300 Paver	300 x 300 x 50 mm	160	11.1	9.8	\$72.80	\$6.59
400 Paver	400 x 400 x 45 mm	108	6.25	16.8	\$63.14	\$10.10
<b>Camino Smooth - Sandune, Almond, Charcoal</b>						
Standard Paver	230 x 115 x 50 mm	500	38	2.8	\$65.38	\$1.73
<b>Plazastone Smooth - Nougat, Charcoal</b>						
500 Paver	500 x 500 x 45 mm	48	4	23.6	\$61.89	\$15.47

### Retaining Wall Blocks from Austral Masonry

Product / Colours	Size L x W x H	Number per pack	Number Per SQM	Weight Per Unit	Per SQM	Per Unit
<b>Arrinastone Splitface - Paperbark, Nougat, Hawkesbury Yellow, Charcoal</b>						
Wall Block	300 x 200 x 150 mm	100	22.2	12.8		\$7.49
Corner (per pair)	250 x 200 x 150 mm	36		44.4		\$45.43
<b>Hastings Split Face - Sepia, Beach, Alpine, Charcoal</b>						
Wall Block	390 x 245 x 200 mm	72	13	21.3		\$12.68
Capping Unit	195 x 60 x 145 mm	272		6		\$4.99
Corner Unit	160 x 360 x 200 mm	96		20		\$12.95
<b>Flinders Split Face - Beach, Charcoal</b>						
Body Block	390 x 195 x 200 mm		13	21.5		\$9.79
Capping Block	390 x 195 x 200 mm	208		23.5		\$9.79
<b>Heron Split Face - Limestone, Sydney Blend, Sandstone, Charcoal</b>						
Wall Block	390 x 245 x 198 mm	60	13	24.4		\$16.45
Capping Unit	390 x 245 x 90 mm	96		16.6		\$15.51
Corner Unit	160 x 360 x 198 mm	36		22.2		\$19.59

## Coffs Harbour Retail Price List. December 2022



## Coffs Harbour Retail Price List. December 2022

### Concrete Sleeper Retaining Walls from Austral Masonry

Product / Colours	Colours	Weight per Unit	Per Unit
<b>Explorer Smooth</b>			
1200 × 200 × 75 mm	Grey	40	\$32.41
1200 × 200 × 75 mm	Charcoal	40	\$34.64
1530 × 200 × 75 mm	Grey	49	\$36.43
1530 × 200 × 75 mm	Charcoal	49	\$40.89
2000 × 200 × 75 mm	Grey	67	\$42.16
2000 × 200 × 75 mm	Charcoal	67	\$50.54
2400 × 200 × 75 mm	Grey	87	\$73.09
2000 × 400 × 75 mm	Grey	145	\$117.64
2000 × 600 × 75 mm	Grey	217	\$176.45
2000 × 1000 × 75 mm	Grey	362	\$294.09
<b>Explorer Sandstone</b>			
1580 × 200 × 75 mm	Natural	50	\$45.44
1580 × 200 × 75 mm	Graphite	50	\$45.44
2000 × 200 × 75 mm	Natural	65	\$51.09
2000 × 200 × 75 mm	Graphite	65	\$55.54
<b>Explorer Timberlook</b>			
1580 × 200 × 75 mm	Charcoal	50	\$48.82
1580 × 200 × 75 mm	Ironbark	50	\$48.82
1580 × 200 × 75 mm	Gumtree	50	\$48.82
2000 × 200 × 75 mm	Charcoal	65	\$59.35
2000 × 200 × 75 mm	Ironbark	65	\$59.35
2000 × 200 × 75 mm	Gumtree	65	\$59.35
<b>Explorer Slate</b>			
1580 × 200 × 75 mm	Ironbark, Gumtree	50	\$51.00

All prices noted are for delivery to metropolitan areas in Coffs Harbour with minimum delivery charge of \$150.00 ex GST for orders under 6 tonnes.

## Coffs Harbour Retail Price List. December 2022

### Concrete Sleeper Posts and Brackets from Austral Masonry

Product / Sizes	Product	Per Unit
<b>Explorer Post Joiner with deformed bar</b>		
1.15m	Post Steel 100UC Galvanised for wall 0.4m	\$53.35
1.15m	Post Steel 100UC Galvanised for wall 0.6m	\$60.64
1.55m	Post Steel 100UC Galvanised for wall 0.8m	\$77.88
1.95m	Post Steel 100UC Galvanised for wall 1.0m	\$106.64
2.35m	Post Steel 100UC Galvanised for wall 1.2m	\$114.10
2.75m	Post Steel 100UC Galvanised for wall 1.4m	\$133.40
3.15m	Post Steel 100UC Galvanised for wall 1.6m	\$143.30
3.55m	Post Steel 100UC Galvanised for wall 1.8m	\$167.49
3.95m	Post Steel 100UC Galvanised for wall 2.0m	\$187.08
3.95m	Post Steel 150UC23.4 Galvanised for wall 2.0m	\$293.34
4.35m	Post Steel 150UC23.4 Galvanised for wall 2.2m	\$353.13
4.75m	Post Steel 150UC23.4 Galvanised for wall 2.4m	\$412.94
5.15m	Post Steel 150UC23.4 Galvanised for wall 2.6m	\$472.79
5.95m	Post Steel 150UC23.4 Galvanised for wall 3.0m	\$534.82
<b>Explorer Post End</b>		
0.6m	Post Steel 100UC Galvanised for wall 0.2m	\$36.22
0.8m	Post Steel 100UC Galvanised for wall 0.4m	\$43.51
1.2m	Post Steel 100UC Galvanised for wall 0.6m	\$55.54
1.6m	Post Steel 100UC Galvanised for wall 0.8m	\$67.69
2.0m	Post Steel 100UC Galvanised for wall 1.0m	\$79.83
2.4m	Post Steel 100UC Galvanised for wall 1.2m	\$91.96
2.8m	Post Steel 100UC Galvanised for wall 1.4m	\$104.10
3.0m	Post Steel 100UC Galvanised for wall 1.6m	\$163.77
4.0m	Post Steel 100UC Galvanised for wall 2.0m	\$236.29
4.4m	Post Steel 100UC Galvanised for wall 2.2m	\$457.60
<b>Explorer Post Joiner</b>		
0.8m	Post Steel Full Length 100UC Galvanised for wall 0.4m	\$78.38
1.2m	Post Steel Full Length 100UC Galvanised for wall 0.6m	\$96.67
1.6m	Post Steel Full Length 100UC Galvanised for wall 0.8m	\$114.94
1.8m	Post Steel Full Length 100UC Galvanised for wall 1.0m	\$133.05
2.0m	Post Steel Full Length 100UC Galvanised for wall 1.0m	\$138.60
2.2m	Post Steel Full Length 100UC Galvanised for wall 1.2m	\$145.33
2.6m	Post Steel Full Length 100UC Galvanised for wall 1.4m	\$169.55
3.0m	Post Steel Full Length 100UC Galvanised for wall 1.6m	\$193.80
3.4m	Post Steel Full Length 100UC Galvanised for wall 1.8m	\$218.23
3.6m	Post Steel Full Length 100UC Galvanised for wall 2.0m	\$242.27
3.0m	Post Steel 150UC23.4 Galvanised for wall 1.6m	\$392.61
3.6m	Post Steel 150UC23.4 Galvanised for wall 2.0m	\$484.27
4.0m	Post Steel 150UC23.4 Galvanised for wall 2.2m	\$543.43
4.4m	Post Steel 150UC23.4 Galvanised for wall 2.4m	\$634.83
4.8m	Post Steel 150UC23.4 Galvanised for wall 2.6m	\$691.60
<b>Fence Brackets and Accessories</b>		
	Large fence bracket 1200 × 65 × 10mm Galvanised	\$74.48
	Straight Fence Bracket 150UC 6mm Galvanised	\$45.61
	Straight Fence Bracket 100UC 3mm Galvanised	\$16.80
	Straight Fence Bracket 100UC 6mm Galvanised	\$24.04
	Offset Fence bracket 150UC 6mm Galvanised	\$45.61
	Offset Fence Bracket 100UC 3mm Galvanised	\$18.05
	Offset Fence Bracket 100UC 6mm Galvanised	\$26.48

All prices noted are for delivery to metropolitan areas in Coffs Harbour with minimum delivery charge of \$150.00 ex GST for orders under 6 tonnes.

## Coffs Harbour Retail Price List. December 2022

### Premium Coloured Masonry from GB Masonry

Product	Size (W x L x H)	Number Per SQM	Number Per Pallet	Number Per Tonne	Per Unit (inc GST)
<b>GB Smooth</b>					
10.01 Standard	90 x 390 x 190mm	12.5	180	100	\$7.00
10.03 Half	90 x 190 x 190mm	25	360	204	\$5.96
10.25 Corner Return	190 x 390 x 190 x 90mm		120	75	\$9.64
10.31 Solid	390 x 190 x 90 mm	12.5	144	70	\$7.38
10.38 Half Height Sill	90 x 130 x 190 x 18mm		448	263	\$6.19
10.71 Half Height	90 x 390 x 90mm	25	360	189	\$5.67
15.01 Standard	140 x 390 x 190mm				\$8.67
15.03 Half	140 x 190 x 190mm				\$7.32
15.42 Channel	140 x 390 x 190mm				\$8.87
20.01 Standard	190 x 390 x 190mm	12.5	90	66	\$10.16
20.03 Half	190 x 190 x 190mm	25	180	115	\$9.64
20.38 Half Height Skill	245 x 100 x 190 mm		244	120	\$8.64
20.42 Channel	190 x 390 x 190mm	12.5	90	64	\$10.60
20.45 Clean Out	190 x 390 x 190mm	12.5	90	64	\$11.47
20.71 Half Height	190 x 390 x 90mm	25	180	125	\$8.10
30.01 Standard	290 x 290 x 190mm		60	50	\$18.04
30.42 Channel	390 x 190 x 290 mm	12.5	80	50	\$17.95
<b>GB Split Face</b>					
10.91 Standard	90 x 390 x 190mm	12.5	150	85	\$9.01
10.95 Standard Solid	90 x 390 x 190 mm	12.5	150	83	\$9.15
10.125 Corner Return	190 x 390 x 190mm		90	50	\$20.20
10.971 Half Height Solid	90 x 390 x 90 mm	25	300	179	\$7.86
10.109 Half Height Cored	90 x 190 x 90 mm	25	300	179	\$7.81
20.121 Standard	190 x 390 x 190mm	12.5	90	55	\$12.25
20.123 Half	190 x 190 x 190mm	25	150	110	\$11.34
20.142 Channel	190 x 390 x 190mm	12.5	90	55	\$11.64
20.139 Corner Return	190 x 390 x 190mm		90	50	\$15.54
30.121 Standard	390 x 190 x 290 mm	12.5	45	45	\$18.11
<b>GB Honed</b>					
10.01 Standard 1 Face Honed	90 x 390 x 190 mm	12.5	180	100	\$20.63
10.03 Half 1 Face Honed	90 x 190 x 190 mm	25	360	204	\$19.35
10.25 Corner Return	90 x 390 x 190 mm		90	75	\$30.32
10.71 Half Height 1 Face Honed	90 x 390 x 90 mm	25	360	189	\$14.98
15.01 Standard	140 x 390 x 190mm				\$21.07
15.03 Half	140 x 190 x 190mm				\$8.84
15.42 Channel	140 x 390 x 190mm				\$21.08
20.01 Standard 1 Face Honed	190 x 390 x 190mm	12.5	90	66	\$22.74
20.03 Half	190 x 290 x 190 mm	25	180	115	\$9.37
20.42 Channel	190 x 390 x 190mm	12.5	90	66	\$22.74
20.71 Half Height	190 x 390 x 90mm	25	180	124	\$16.02
50.31 Capping Tile - Top Face Honed	190 x 390 x 40 mm		288	164	\$12.03
50.31 Capping Tile - Top Face, 1 Edge	190 x 390 x 40 mm		288	164	\$19.00
50.31 Capping Tile - Top Face, 2 Edges	190 x 390 x 40 mm		288	164	\$25.96
50.31 Capping Tile - Top Face, 2 Edges, 1 End	190 x 390 x 40 mm		288	164	\$25.96
50.31 Capping Tile - Top Face, 2 Edges, 2 End	190 x 390 x 40 mm		288	164	\$25.96
50.31 Capping Tile - Top Face, 1 Edge, 1 End	190 x 390 x 40 mm		288	164	\$19.35
50.31 Capping Tile - Top Face, 1 Edge, 2 Ends	190 x 390 x 40 mm		288	164	\$19.35

All prices noted are for delivery to metropolitan areas in Coffs Harbour with minimum delivery charge of \$150.00 ex GST for orders under 6 tonnes.

## Coffs Harbour Retail Price List. December 2022

### Premium Coloured Masonry from GB Masonry

Product	Size (W x L x H)	Number Per SQM	Number Per Pallet	Number Per Tonne	Per Unit (inc GST)
<b>GB Sandstone Rock Face</b>					
10.91 HS Standard	90 x 390 x 190 mm	12.5	150	90	\$9.78
10.92 HS Internal Corner	90 x 390 x 190 mm		200	110	\$9.78
10.92 HS Three Quarter	90 x 190 x 190mm	15.7	200	110	\$9.78
10.93 HS Half	90 x 390 x 190mm	25	300	185	\$8.82
10.971 HS Half Height	90 x 390 x 190mm	25	300	179	\$7.83
10.125 HS Corner Return	90 x 190 x 90 mm		90	50	\$21.29
10.95 HS Solid	90 x 190 x 90 mm	12.5	132	72	\$10.68
20.121 Standard	190 x 390 x 190 mm	12.5	60	90	\$14.12
20.123 Half	190 x 390 x 190 mm	25	105	150	\$13.28
20.127 Half Height	190 x 390 x 190mm	12.5	113	180	\$11.28
20.133 Knockout	190 x 390 x 190mm	12.5	60	90	\$15.13
20.139 Solid Corner Return	190 x 290 x 190 mm		50	90	\$18.16
20.142 Channel	190 x 390 x 190mm	12.5	60	90	\$14.12
20.145 E Block	190 x 390 x 90 mm	12.5	60	90	\$15.43
50.31 Capping Tile 40 mm	190 x 390 x 40 mm		288	164	\$4.27
50.50 Smooth Paving Slab	390 x 390 x 65 mm		90	66	\$15.54
41.41 Double Sided Split Capping Tile Chamfered	260 x 390 x 65 mm		120	115	\$15.54
41.44 Split End Capping Tile Chamfered	260 x 390 x 65 mm		120	115	\$15.54
50.65 Split Sided Pier Capping Tile	325 x 325 x 65 mm		90	66	\$15.54
50.66 Split 4 Sided Pier Capping Tile	330 x 300 x 65 mm		90	66	\$15.54
41.48 Split Edge Capping Tile Chamfered	300 x 390 x 65 mm		120	66	\$15.54
50.70 Split Step Tread	350 x 390 x 65 mm		90	66	\$15.54

All prices noted are for delivery to metropolitan areas in Coffs Harbour with minimum delivery charge of \$150.00 ex GST for orders under 6 tonnes.

## Coffs Harbour Retail Price List. December 2022

### Premium Coloured Masonry from GB Masonry

Product	Size (W x L x H)	Number Per SQM	Number Per Pallet	Number Per Tonne	Per Unit (inc GST)
<b>GB Aspect Honed</b>					
10.01 Standard	90 x 390 x 190 mm	12.5	180	100	\$22.54
10.03 Half	90 x 190 x 190 mm	25	360	204	\$16.33
10.25 Corner Return	90 x 390 x 190 mm		120	75	\$46.68
20.01 Standard	190 x 390 x 190 mm	12.5	90	66	\$30.21
20.42 Channel	190 x 390 x 190 mm	25	90	64	\$31.14
<b>Breeze Blocks</b>					
Arc Breeze	390 x 190 x 190mm	12.5	90		\$35.17
Diamond Breeze	390 x 190 x 140mm	12.5	108		\$35.17
Wedge Breeze	390 x 190 x 140mm	12.5	108		\$35.17
Flower Breeze	290 x 290 x 90mm	12.5	128		\$35.17
Circle Breeze	290 x 290 x 90mm	12.5	128		\$35.17
Cloud Breeze	390 x 190 x 100mm	12.5	144		\$35.17
Linear Breeze	390 x 90 x 90mm	25	360		\$26.72
<b>GB Veneer</b>					
10.117 Sawn Face	90 x 390 x 40 mm	50	480	323	\$5.53
10.117S Split Face	95 x 390 x 40 mm	50	480	323	\$5.53
10.117 Arcadia	90 x 390 x 40 mm	50	480	323	\$2.52
<b>GB Vertico Split Face</b>					
20.01 Vertico Standard	190 x 390 x 190 mm	12.5			\$9.38

## Coffs Harbour Retail Price List. December 2022

### Grey Masonry Blocks from Austral Masonry

Product	Size (W x L x H)	Number Per SQM	Number Per Pallet	Number Per Tonne	Per Unit (inc GST)
<b>100 Series</b>					
10.01 Standard	90 x 390 x 190mm	12.5	180	115	\$2.66
10.02 Three Quarter	90 x 290 x 190mm	12.5	240	122	\$2.53
10.03 Half	90 x 190 x 190mm		360	208	\$1.61
10.04 Quarter	90 x 90 x 190mm		720	357	\$1.36
10.25 Corner Return	190 x 390 x 190 x 90mm		120	81	\$4.81
10.31 Solid	90 x 390 x 190mm	12.5	144	82	\$3.42
10.71 Half Height	90 x 390 x 90mm	25	360	208	\$2.27
10.83 Half Height Solid	90 x 390 x 90mm	25	288	167	\$2.53
<b>150 Series</b>					
15.01 Standard	140 x 390 x 190mm	12.5	144	89	\$3.67
15.03 Half	140 x 190 x 190 mm	12.5	240	175	\$2.22
15.12 Lintel	140 x 390 x 190 mm	25	120	60	\$4.81
15.25 Corner Return	140 x 390 x 190mm		105	62	\$5.77
15.42 Channel	140 x 390 x 90 mm	25	168	93	\$3.67
15.45 Clean Out	140 x 390 x 90 mm	25	144	97	\$4.43
15.48 H Block	140 x 390 x 190mm	12.5	168	93	\$3.67
15.71 Half Height	140 x 390 x 190mm	25	288	175	\$2.98
15.83 Half Height Solid	140 x 390 x 90mm	25	192	109	\$3.61
75.710 150mm Capping Unit	140 x 390 x 190mm	12.5	384	250	\$2.24
<b>200 Series</b>					
20.01 Standard	190 x 390 x 190 mm	12.5	126	75	\$3.96
20.02 Three Quarter	190 x 290 x 190 mm		144	85	\$4.49
20.03 Half	190 x 190 x 190 mm		180	133	\$3.00
20.13 Half Lintel	390 x 190 x 190 mm		90	55	\$5.60
20.18 Extra Deep Lintel	190 x 390 x 190 mm		180	127	\$3.13
20.20 Knockout	190 x 190 x 190 mm		108	77	\$6.42
20.38 Sill Block	190 x 390 x 190 mm		126	71	\$4.69
20.42 Channel	190 x 390 x 190mm		180	157	\$4.45
20.48 Channel	190 x 390 x 190 mm		126	80	\$3.96
20.61 Clean Out	190 x 390 x 190 mm		126	89	\$4.37
50.45 Clean Out Tile and Spring	190 x 390 x 40 mm		108	93	\$4.22
20.71 Half Height	190 x 390 x 190 mm		192	222	\$3.67
20.73 Half Height Half	190 x 390 x 190 mm		216	137	\$1.96
20.739 Squint	190 x 390 x 190 mm		360	260	\$5.84
20.71 Half Height Half	190 x 390 x 190 mm		126	94	\$7.43
50.31 Capping Unit	190 x 390 x 40 mm		288	288	\$2.53
<b>300 Series</b>					
30.01 Standard	290 x 390 x 190 mm	12.5	180	100	\$6.90
30.02 Three Quarter	290 x 190 x 190 mm		180	100	\$7.53
30.18 Deep Lintel	190 x 290 x 390 mm		360	204	\$11.59
30.45 Clean Out	290 x 390 x 190 mm		90	75	\$6.65
30.48 H Block	290 x 390 x 190 mm		288	164	\$6.65
<b>400 Series</b>					
400mm Single Core	390 x 190 x 390 mm		45	54	\$10.24
<b>Bricks</b>					
Common	230 x 76 x 110 mm		500	286	\$1.08

All prices noted are for delivery to metropolitan areas in Coffs Harbour with minimum delivery charge of \$150.00 ex GST for orders under 6 tonnes.

All prices noted are for delivery to metropolitan areas in Coffs Harbour with minimum delivery charge of \$150.00 ex GST for orders under 6 tonnes.

# Discover More

Inspiration doesn't always come naturally, and your project is going to be there for a long time, so it's worth taking your time to enjoy the creative process. From visiting us at our Design Centres and Studios, and exploring our iVisualise Tools online, to chatting in person or over the phone, we're here to help.



## Discover

### **Brickworks Design Centres or Studios**

Your local Brickworks design centre or studio is a one-stop destination for advice and inspiration, where you can experience the quality of our product range first-hand. Our experienced consultants will guide you through the range and help you find the best possible solution for your project – within your budget.

**Call.**  
1300 Masonry

## Create

### **iVisualise Tools**

Using artificial intelligence and digital technology, you're now able to experience colours, forms and profiles with our online colour visualisation tool. iVisualise helps make selection seamless and simple – whether you're looking for a traditional product, or something more contemporary.

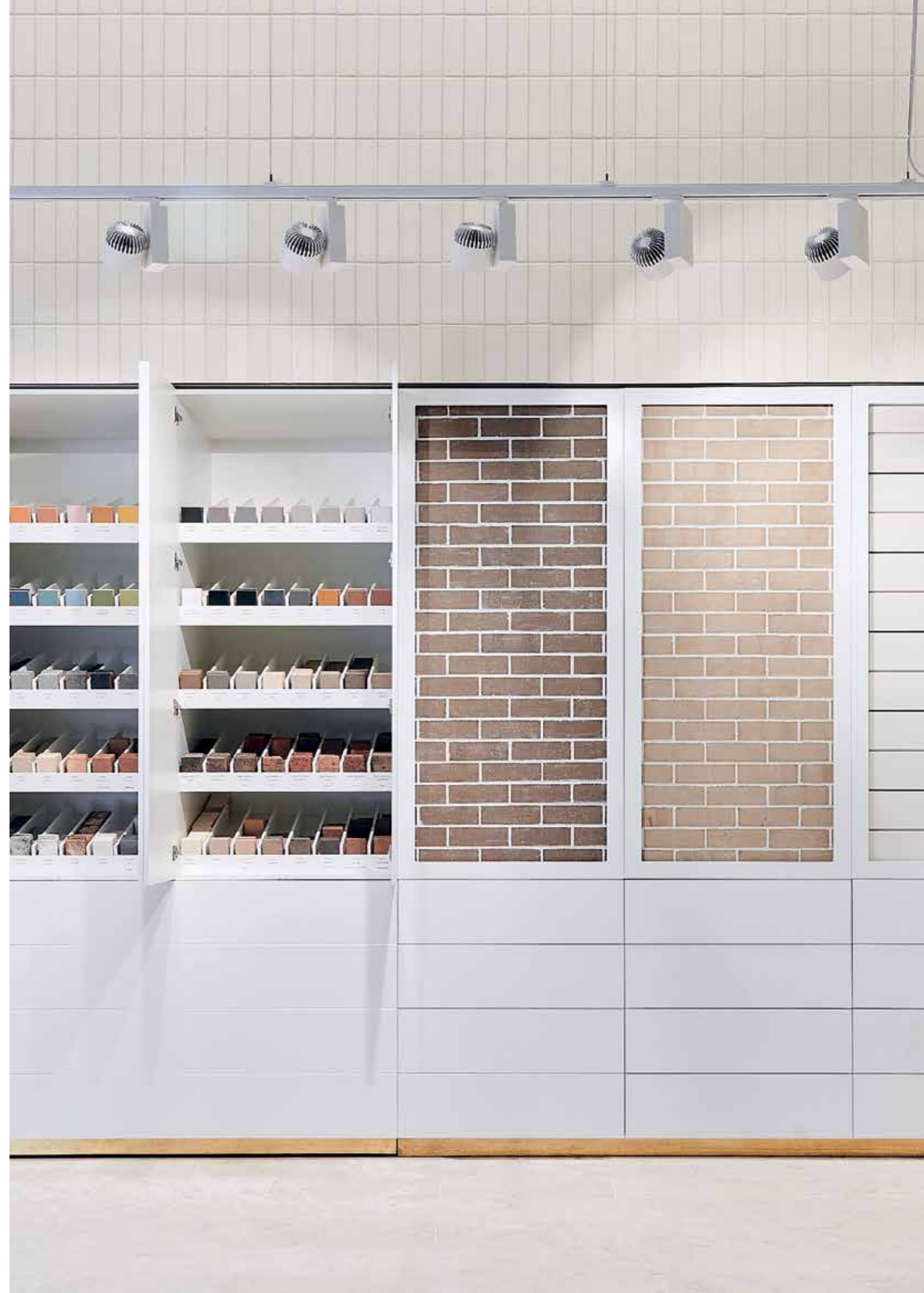
**Visit.**  
[australmasonry.com.au/ivisualise](http://australmasonry.com.au/ivisualise)

## Learn

### **Colour Consultations**

Building or renovating a home is a major investment – and it should be an enjoyable experience for you. We can help with a one-to-one colour consultation where our experts can guide you on colour trends, the right fit and style, and ideas that will give you a genuinely individual look.

**Book.**  
[brickworks.com.au/colour](http://brickworks.com.au/colour)



Visit. [australmasonry.com.au](http://australmasonry.com.au)

Call. 1300 Masonry

---

## Design Studios

### Coffs Harbour

Tel. 02 6652 3457  
27 Lawson Crescent  
Coffs Harbour NSW 2450

---

## Follow Us



### Paver and Natural Stone Sale Terms & Conditions

- 1. Stock colours.** Colours other than stock colours are made to order. Contact your nearest Austral Masonry office for your area's stock colour. A surcharge applies to orders less than the set minimum quantity.
- 2. Colour and texture variation.** The supply of raw materials can vary over time. In addition, the variation can occur between product types and production batches.
- 3.** We reserve the right to change the details in this publication without notice.
- 4.** For a full set of Terms & Conditions of Sale please contact your nearest Austral Masonry, Brickworks or UrbanStone sales office.

The product images shown in this brochure give a general indication of product colour for your preliminary selection. Austral Masonry recommends all customers see actual product samples at a selection centre prior to making final selections.