

May 2023

BRICKWORKS

Adelaide

Retail Price List

Masonry Blocks, Retaining Walls, Natural Stone, Pavers, Wall Cladding & Accessories



Adelaide Retail Price List. March 2023

Grey Masonry Blocks from Austral Masonry

Product	Size (L x W x H)	Number Per SQM	Approx Weight (KG)	Number Per Pallet	Number Per Tonne	Per Unit (inc GST)
100 Series						
10.01 Full Length	390 x 90 x 190mm		11.5	144	87	\$3.17
10.02 Three Quarter	290 x 90 x 190mm		8.7	192	115	\$2.86
10.03 Half	190 x 90 x 90mm		5.5	288	182	\$2.05
10.04 Quarter	90 x 90 x 190mm		3.7	360	271	\$1.85
10.12 Half Lintel	190 x 90 x 190mm		5.3	288	188	\$2.32
10.26 90 Degree Return	390 x 190 x 190mm		19.2	72	52	\$6.91
10.31 Full Length Solid	390 x 90 x 190mm		15.2	108	66	\$4.62
10.71 Half High Full Length	390 x 90 x 90mm		5.4	288	184	\$2.22
10.83 Half High Solid	190 x 90 x 90mm		6.8	216	147	\$2.37
150 Series						
15.01 / 15.42 Full Length Cored	390 x 140 x 190mm		13.5	120	74	\$4.09
15.02 Three Quarter	290 x 140 x 190mm		10.8	160	93	\$3.78
15.03 Half	190 x 140 x 190mm		6.8	192	147	\$2.48
15.12 Half Length Lintel	190 x 140 x 190mm		7.1	192	140	\$2.52
15.22 Corner	340x 140 x 190mm		12.0	96	83	\$3.93
15.31 Full Length Solid	390 x 140 x 190mm		23.3	72	43	\$6.38
15.71 Half High	190 x 140 x 190mm		5.8	240	172	\$3.24
15.83 Half High Solid	390 x 40 x 90mm		11.6	160	86	\$4.75
15.705 Full Length 2HR Fire Rated	390 x 140 x 190mm		16.7	96	60	\$4.73
15.702 3/4HR Fire Rated	290 x 140 x 190mm		14.5	128	69	\$3.91
200 Series						
20.01/20.42 Full Length Cored	390 x 190 x 190mm		16.7	90	60	\$4.73
20.02 Three Quarter	290 x 190 x 190mm		13.9	120	72	\$4.42
20.03 Half	190 x 190 x 190mm		6.9	180	144	\$2.94
20.15 Half Length Lintel	190 x 190 x 190mm		9.4	180	106	\$3.21
20.20 Bond beam	390 x 190 x 190mm		18.9	90	33	\$4.97
20.31 Full Length Solid	390 x 190 x 190mm		30.3	54	53	\$7.50
20.45 Clean Out	390 x 190 x 190mm		16.7	90	60	\$4.73
20.71 Half High	390 x 190 x 90mm		8.5	180	117	\$3.83
50.31 Slim Capping	390 x 190 x 40mm		3.5	216	285	\$2.12
300 Series						
30.01/30.42 Full Length Cored	390 x 290 x 190mm		26.3	60	38	\$9.25
30.02 Three Quarter	290 x 290 x 190mm		25.0	64	40	\$9.11
30.03 Half	190 x 290 x 190mm		14.5	120	69	\$6.22
30.04 Quarter	90 x 290 x 190mm		11.5	100	87	\$4.15

All prices noted are ex yard/pick up. Delivery charges will be priced on application.

Please note: SQM = Square metre // LM = Linear metre // POA = Price on Application

Adelaide Retail Price List. March 2023

Coloured Masonry Blocks from Austral Masonry

Product	Size (L x W x H)	Number Per SQM	Approx Weight (KG)	Number Per Pallet	Number Per Tonne	Per Unit (inc GST)
Architec Smooth 100 Series						
10.01 Full Length	390 x 90 x 190mm		11	144	87	\$3.98
10.31 Full Length Solid	390 x 90 x 390mm		15	108	66	\$5.81
10.71 Half High Full Length	390 x 90 x 90mm		5.4	288	184	\$3.27
10.83 Half High Solid	190 x 90 x 90mm		6.8	216	147	\$4.08
Architec Smooth 150 Series						
15.01/15.42 Full Length Cored	390 x 140 x 190mm		14	120	74	\$7.05
15.31 Full Length Solid	390 x 140 x 190mm		23	72	43	\$8.85
15.71 Half High	390 x 140 x 90mm		5.8	240	172	\$6.06
15.83 Half High Solid	390 x 140 x 90mm		11.6	160	86	\$7.16
Architec Smooth 200 Series						
20.01/20.42 Full Length Cored	390 x 190 x 190mm		16.7	90	60	\$7.46
20.31 Full Length Solid	390 x 190 x 190mm		30.3	54	33	\$11.30
20.71 Half High	390 x 190 x 90mm		8.5	180	117	\$6.42
20.83 Half High Solid	390 x 190 x 90mm		15.2	120	66	\$7.59
50.31 Slim Capping			3.5	216	285	\$3.82
Architec Smooth 300 Series						
30.01/30.42 Full Length Cored	390 x 290 x 190 mm		26.3	120	38	\$12.14
Architec Split Face						
10.101 Full Length Solid	390 x 90 x 190mm		15.2	108	66	\$5.71
10.109 Full Length Half-High	390 x 90 x 190mm		7.6	216	90	\$6.26
15.101 Full Length Cored	390 x 140 x 190mm		13.5	96	74	\$6.57
20.101 Full Length Cored	390 x 290 x 190mm		13.5	96	74	\$7.26
Architec Honed						
10.01 Full Length Cored	390 x 90 x 190 mm		11.5	144	87	\$7.53
10.71 Half High Cored	390 x 90 x 190 mm		5.4	288	184	\$6.76
10.83 Half High Solid	390 x 90 x 190 mm		6.8	216	147	\$7.53
15.01 Full Length	390 x 140 x 190 mm		13.5	120	74	\$11.64
15.71 Half High	390 x 140 x 90 mm		5.8	240	172	\$10.65
20.01 Full Length	390 x 190 x 190 mm		16.7	90	60	\$12.04
20.71 Half High	390 x 190 x 90 mm		8.5	180	117	\$10.98
# Please add an additional \$3.00 Ex GST for each additional Face & End to be Honed						
Vertico						
10.141 Full Length Splitface Ribbed	390 x 90 x 190 mm		8	180	125	\$8.78
10.162 Full Length Smooth Ribbed	390 x 90 x 190 mm		14	108	71	\$9.54

All prices noted are ex yard/pick up. Delivery charges will be priced on application.

Please note: SQM = Square metre // LM = Linear metre // POA = Price on Application

Adelaide Retail Price List. March 2023

Premium Coloured Masonry from GB Masonry

Product	Size (L x W x H)	Number Per SQM	Approx Weight (KG)	Number Per Pallet	Number Per Tonne	Per Unit (inc GST)
GB Smooth						
10.01 Standard	390 x 90 x 190mm	12.5	10.0	180	100	\$5.90
10.03 Half	90 x 130 x 190 x 18 mm		5	360	204	\$3.50
10.25 Corner Return	190 x 390 x 190 x 90 mm		13.3	120	75	\$8.93
10.31 Solid	390 x 90 x 190mm		14.3	144	70	\$7.54
10.38 Half Height Sill	90 x 130 x 190 x 18 mm		3.8	448	263	\$4.91
10.71 Half Height	390 x 90 x 90 mm	25	5.3	360	189	\$3.99
10.83 Half Height Solid	390 x 90 x 90 mm		7.2	288	357	\$5.43
20.01 Standard	390 x 190 x 190 mm	12.5	15.6	90	64	\$10.13
20.42 Channel	390 x 190 x 190 mm	12.5	15.6	90	64	\$10.13
20.71 Half Height	390 x 90 x 190 mm	25	8.0	180	125	\$7.15
20.38 Half Height Sill	390 x 190 x 190 mm	-	8.3	224	120	\$6.76
50.31 Capping Tile	190 x 390 x 40 mm		6.1	288	164	\$3.67
30.01 Standard	290 x 290 x 190 mm		20.0	60	50	\$17.40
GB Split Face						
10.91 Standard	390 x 90 x 190 mm	12.5	12.7	150	79	\$7.90
10.93 Half Veneer	390 x 90 x 90 mm		4.8	300	208	\$6.60
10.125 Corner Return	390 x 190 x 190 mm		20	90	50	\$17.40
10.971 Half Height	290 x 90 x 90 mm	25	5.6	300	179	\$5.28
20.121 Standard	190 x 390 x 190 mm	12.5	15.8	90	63	\$10.75
20.127 Half Height	190 x 390 x 90 mm		9.1	180	110	\$6.54
20.139 Corner	190 x 390 x 90 mm		9.1	180	110	\$10.84
20.142 Channel	190 x 390 x 190 mm		16.7	90	60	\$15.60
30.121 Standard	390 x 290 x 90 mm		22.2	45	45	\$17.25
30.142 Channel	390 x 290 x 190 mm		22.2	45	45	\$18.12
GB Honed						
10.01 Standard	390 x 90 x 190 mm	12.5	10.0	180	100	\$9.89
10.03 Half	390 x 90 x 90 mm	12.5	4.9	360	204	\$8.97
10.25 Corner Return	190 x 390 x 190 x 90mm		13.3	120	75	\$16.91
10.31 Solid	390 x 90 x 190mm		14.3	144	70	\$14.79
10.71 Half Height	390 x 90 x 90 mm	25	5.3	360	189	\$7.98
10.83 Half Height Solid	390 x 90 x 90 mm		7.2	288	139	\$11.17
20.01 Standard	390 x 190 x 190 mm	12.5	15.6	90	64	\$14.38
20.42 Channel	390 x 190 x 190 mm	12.5	15.6	90	64	\$14.38
20.71 Half Height	390 x 190 x 90 mm	25	8.0	180	125	\$11.14
50.31 Capping Tile	390 x 190 x 40 mm		6.1	288	164	\$7.66

Adelaide Retail Price List. March 2023

Premium Coloured Masonry from GB Masonry

Product	Size (L x W x H)	Number Per SQM	Approx Weight (KG)	Number Per Pallet	Number Per Tonne	Per Unit (inc GST)
GB Sandstone Rock Face						
10.91 HS Standard	390 x 90 x 190 mm	12.5	11.1	150	90	\$10.02
10.971 HS Half Height	390 x 90 x 190 mm	25	5.6	300	179	\$6.48
10.125 HS Corner Return	390 x 190 x 190 mm	12.5	20.0	90	50	\$18.43
20.121 HS Standard	390 x 190 x 190 mm	12.5	17.3	90	58	\$14.03
20.127 HS Half Height	190 x 190 x 90 mm	25	8.3	180	120	\$8.71
20.139 HS Corner Return	390 x 190 x 190 mm	-	18.2	90	55	\$17.65
20.142 Channel Block	390 x 190 x 190 mm	12.5	17.2	90	58	\$14.02
GB Aspect Honed						
10.01 Standard	390 x 90 x 190 mm	12.5	10.0	180	100	\$13.88
10.25 Corner Return	390 x 190 x 190 x 90 mm		13.3	120	75	\$24.89
20.01 Standard	390 x 190 x 190 mm	12.5	15.6	90	64	\$18.37
20.42 Channel	390 x 190 x 190 mm	12.5	15.6	90	64	\$18.37
GB Veneer						
10.117 Sawn Face	390 x 90 x 40 mm	50	3.1	480	323	\$3.43
10.117S Split Face	390 x 95 x 40 mm	50	3.1	480	323	\$4.04
10.117 Arcadia	390 x 90 x 40 mm	50	3.1	480	323	\$4.95
GB Vertico Split Face						
20.01 Vertico Standard	390 x 190 x 190 mm	12.5	15.0			\$9.00
Breeze Blocks						
Diamond Breeze	390 x 140 x 190 mm	12.5	12.20	108		\$24.42
Wedge Breeze	390 x 140 x 190 mm	12.5	12.20	108		\$24.42
Flower Breeze	390 x 90 x 190 mm	12.5	9.40	128		\$24.42
Cloud Breeze	390 x 90 x 90 mm	12.5	8.30	144		\$24.42
Arc Breeze	290 x 90 x 290 mm	12.5	14.50	90		\$24.42
Circle Breeze	290 x 90 x 290 mm	12.5	9.20	128		\$24.42
Linear Breeze	390 x 180 x 190 mm	25	4.70	360		\$20.75

All prices noted are ex yard/pick up. Delivery charges will be priced on application.

Please note: SQM = Square metre // LM = Linear metre // POA = Price on Application

All prices noted are ex yard/pick up. Delivery charges will be priced on application.

Please note: SQM = Square metre // LM = Linear metre // POA = Price on Application

Adelaide Retail Price List. March 2023

Natural Limestone Blocks from UrbanStone

Product	Size (L x W x H)	Product Code	Approx Weight (KG)	Number Per Pallet	Per Unit (inc GST)
Carabooda Quarry Cut Limestone					
Standard Unit	1000 x 350 x 350 mm	CB1000350350QC1	182	8	\$54.47
Standard Unit	500 x 350 x 350 mm	CB500350350QC1	91	18	\$33.50
Standard Unit	500 x 350 x 240 mm	CB500350240QC1	67	24	\$27.78
Standard Unit	500 x 350 x 200 mm	CB500350200QC1	53	30	\$24.84
Standard Unit	500 x 350 x 150 mm	CB500350150QC1	41	36	\$23.05
Moore River Quarry Cut Limestone					
Standard Unit	1000 x 350 x 350 mm	MB1000350350QC1	182	8	\$59.51
Standard Unit	500 x 350 x 350 mm	MB500350350QC1	91	18	\$35.46
Standard Unit	500 x 350 x 240 mm	MB500350240QC1	67	24	\$30.99
Standard Unit	500 x 350 x 200 mm	MB500350200QC1	53	30	\$27.23
Standard Unit	500 x 350 x 150 mm	MB500350150QC1	41	36	\$24.31
Carabooda Diamond Cut Limestone					
Standard Unit	500 x 332 x 165mm	CB500332165DC1	40.0	36	\$24.87
Standard Unit	500 x 332 x 100mm	CB500332100DC1	27.0	50	\$21.18
Standard Unit	500 x 245 x 165mm	CB500245165DC1	34.0	48	\$22.12
Standard Unit	500 x 245 x 100mm	CB500245100DC1	13.0	100	\$14.27
Standard Unit	500 x 159 x 100mm	CB500159100DC1	22.0	68	\$12.95
Standard Unit	500 x 117 x 100mm	CB500117100DC1	11.0	136	\$10.23
Moore River Diamond Cut Limestone					
Standard Unit	500 x 332 x 165mm	MB500332165DC1	40.0	36	\$27.39
Standard Unit	500 x 332 x 100mm	MB500332100DC1	27.0	50	\$23.76
Standard Unit	500 x 245 x 165mm	MB500245165DC1	34.0	48	\$22.30
Standard Unit	500 x 245 x 100mm	MB500245100DC1	13.0	100	\$19.31
Standard Unit	500 x 159 x 100mm	MB500159100DC1	22.0	68	\$13.14

Engineered Limestone Blocks from UrbanStone

Product / Colours	Size (W x L x H)	Product Code	Approx Weight (kg)	Number Per Pallet	Per Unit
Carabooda Plain - Reconstituted Limestone					
Cream Standard Unit - Plain	1000 x 350 x 350 mm	CBR1000350350CP	220	8	\$63.85
Cream Standard Unit - Plain	1000 x 350 x 240 mm	CBR1000350240CP	150	12	\$63.85
Cream Standard Unit - Plain	1000 x 350 x 165 mm	CBR1000350165CP	105	12	\$47.75
Cream Standard Unit - Plain	500 x 350 x 250 mm	CBR500350350CP	110	18	\$47.75
Cream Standard - Bevelled	1000 x 350 x 350 mm	CBR1000350350CB	220	8	\$38.30
Cream Standard - Bevelled	1000 x 350 x 240 mm	CBR1000350240CB	150	12	\$38.30
Cream Standard - Bevelled	1000 x 350 x 165 mm	CBR1000350165CB	105	12	\$35.74
Cream Standard - Bevelled	500 x 350 x 350 mm	CBR500350350CB	110	18	\$35.74

All prices noted are ex yard/pick up. Delivery charges will be priced on application.

Please note: SQM = Square metre // LM = Linear metre // POA = Price on Application

Adelaide Retail Price List. March 2023

Engineered Limestone Blocks from UrbanStone

Product / Colours	Size (W x L x H)	Product Code	Approx Weight (kg)	Number Per Pallet	Per Unit
Brickstone / Kerbing / Scapestone / MetreBlock					
Brickstone 1031 - Plain	390 x 190 x 90mm	1031LS	7.5	200	\$5.42
Kerbing - Plain	500 x 160 x 90mm	KER501690	10	90	\$9.43
Mini Block - Plain	500 x 245 x 90mm	MIN502490PC	20	80	\$12.37
Scapestone 165 - Plain	350 x 350 x 165mm	SCA353516PC	38	36	\$17.36
Scapestone 165 - Bevelled	350 x 350 x 165mm	SCA353516BC	38	36	\$17.36
Scapestone 120 - Plain	500 x 350 x 120mm	SCA503512PC	40	48	\$19.00
Scapestone 120 - Bevelled	500 x 350 x 120mm	SCA503512BC	40	48	\$19.00
Wallstone					
Wallstone 24 - Plain	500 x 350 x 240mm	WAL503524PC	84	24	\$30.46
Wallstone 24 - Bevelled	500 x 350 x 240mm	WAL503524BC	84	24	\$30.46
Wallstone Split - Plain	500 x 165 x 245mm	WAL501624PC	37	48	\$17.16
Wallstone Split - Bevelled	500 x 165 x 245mm	WAL501624BC	37	48	\$17.16
Wallstone 20 - Plain	500 x 350 x 200mm	WAL503520PC	65	30	\$24.90
Wallstone 20 - Bevelled	500 x 350 x 200mm	WAL503520BC	65	30	\$24.90
Wallstone 19 - Plain	500 x 245 x 190mm	WAL502419PC	45	40	\$20.22
Wallstone 19 - Bevelled	500 x 245 x 190mm	WAL502419BC	45	40	\$20.22
Wallstone Jnr - Plain	400 x 300 x 190mm	WAL403019PC	45	36	\$19.97
Wallstone Jnr - Bevelled	400 x 300 x 190mm	WAL403019BC	45	36	\$19.97
Pier Caps					
Pier Cap 440 - Plain	380 x 380 x 100mm	PIED383810LS	25	20	\$76.08
Pier Cap 560 - Plain	440 x 440 x 100mm	PIED444410LS	38	20	\$87.54
Pier Cap 660 - Plain	560 x 560 x 100mm	PIED565610LS	50	20	\$97.85
Bullnose					
Bullnose 150mm - Plain	500 x 150 x 50mm	BND501550SSLS	7	44	\$23.40
Bullnose 195mm - Plain	500 x 195 x 50mm	BND501950SSLS	9	120	\$23.79
Bullnose 240mm - Plain	500 x 240 x 50mm	BND502450SSLS	11	96	\$24.17
Bullnose 300mm - Plain	500 x 300 x 50mm	BND503050SSLS	15	72	\$26.77
Bullnose 340mm - Plain	500 x 340 x 50mm	BND503450SSLS	16	72	\$26.97
Bullnose 150mm Double Sided - Plain	500 x 150 x 50mm	BND501550DSLS	7	144	\$25.23
Bullnose 195mm Double Sided - Plain	500 x 195 x 50mm	BND501950DSLS	9	120	\$25.62
Bullnose 240mm Double Sided - Plain	500 x 240 x 50mm	BND502450DSLS	11	96	\$26.00
Bullnose 300mm Double Sided - Plain	500 x 300 x 50mm	BND503050DSLS	15	72	\$28.73
Bullnose 340mm Double Sided - Plain	500 x 340 x 50mm	BND503450DSLS	16	72	\$28.92

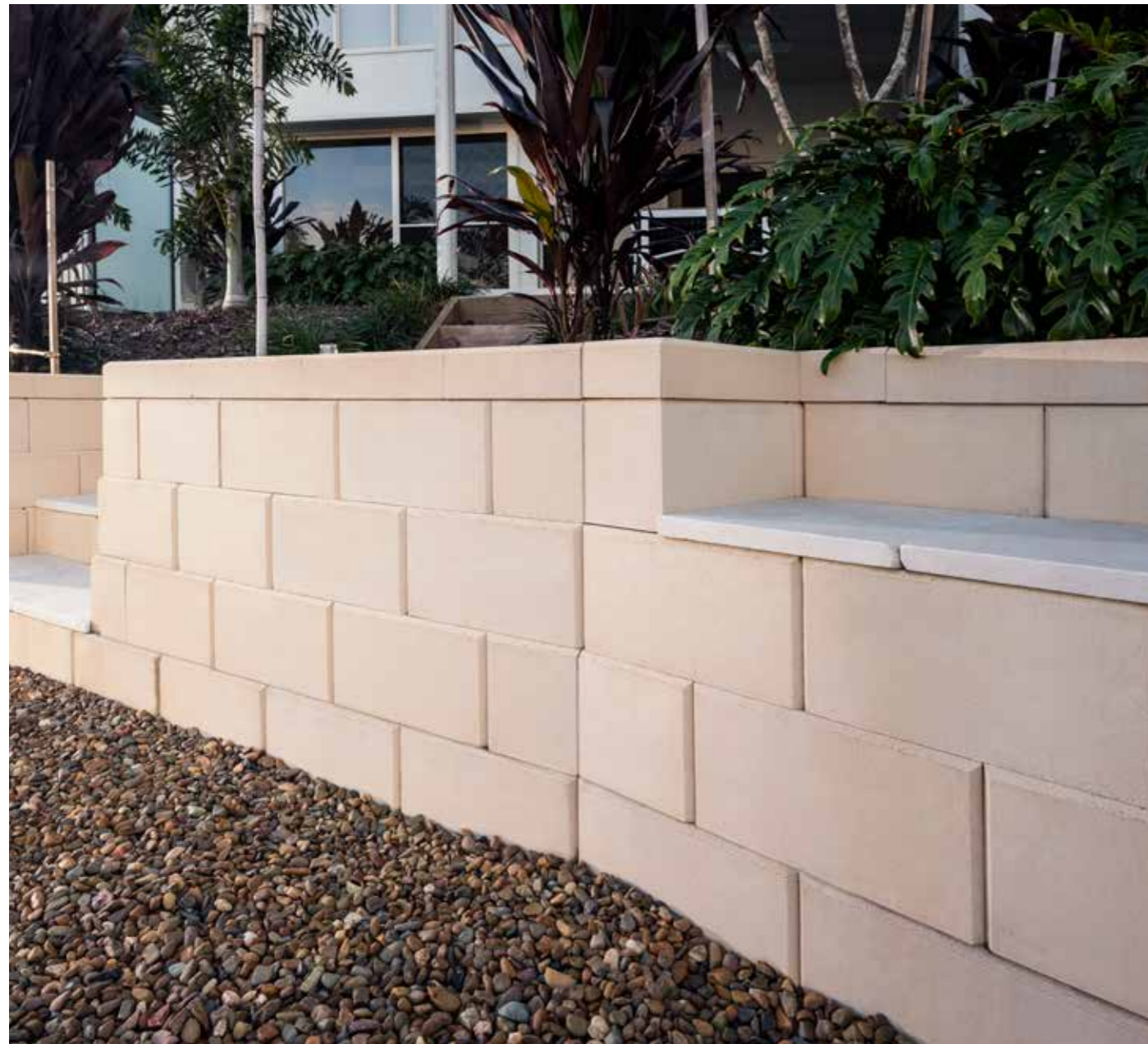
All prices noted are ex yard/pick up. Delivery charges will be priced on application.

Please note: SQM = Square metre // LM = Linear metre // POA = Price on Application

Adelaide Retail Price List. March 2023

Retaining Wall Blocks from Austral Masonry

Product / Colours	Size L x W x H	Number per pack	Number Per SQM	Weight Per Unit	Per Unit
Heron Split Face - Carbon and Parchment					
Wall Block	390 x 245 x 198 mm	60	13	24	\$10.97
Capping Unit	390 x 245 x 70 mm	96		16	\$12.07
Corner Unit	160 x 390 x 198 mm	90		20	\$10.97
Hayman Smooth - Carbon and Parchment					
Wall Block	390 x 245 x 198 mm	60	13	24	\$10.97
Capping Unit	195 x 245 x 70 mm	96		16	\$12.07
Corner Unit	160 x 360 x 198 mm	90		20	\$10.97



Adelaide Retail Price List. March 2023

Concrete Pavers from Austral Masonry

Product / Colours	Size L x W x H	Number per pack	Number Per SQM	Weight Per Unit	Per SQM	Per Unit
Florence Smooth - Limestone, Amber, Sandstone, Earth, Pewter, Ash						
Standard Unit	200 x 200 x 60 mm	324	25		\$40.51	\$1.62
Florence Milled or Shot Blast - Limestone, Amber, Sandstone, Earth						
Standard Unit	200 x 200 x 60 mm	324	25		\$58.99	\$2.35

Porcelain Pavers from UrbanStone

Product / Colours	Size L x W x H	Number per pack	Number Per SQM	Weight Per Unit	Per SQM	Per Unit
Percorsi - Pietra Di Barge, Pietra Di Combe, White, Black, Pietra Di Bagnolo						
Standard Unit	600 x 600 x 20 mm	2	2.77		\$93.66	\$33.81
Soul - Walnut, Grey						
Standard Unit	1200 x 300 x 20 mm	2	2.77		\$121.28	\$43.78

Australian Granite from UrbanStone

Product / Colours	Size L x W x H	Number per pack	Number Per SQM	Weight Per Unit	Per SQM	Per Unit
All Colours						
Exfoliated Standard Unit	400 x 400 x 20 mm		6.25		\$247.50	\$39.60
	600 x 150 x 20 mm		11.11		\$247.50	\$22.27
Honed Standard Unit	400 x 400 x 20 mm		6.25		\$289.30	\$46.28
	600 x 150 x 20 mm		11.11		\$289.30	\$26.03

Australian Marble from UrbanStone

Product / Colours	Size L x W x H	Number per pack	Number Per SQM	Weight Per Unit	Per SQM	Per Unit
Pilbara Green & Pilbara Red						
Polished Standard Unit	600 x 300 x 20 mm		2.77		\$467.50	\$168.77
	600 x 600 x 20 mm		5.56		\$467.50	\$84.08
Austral Pearl						
Polished Standard Unit	600 x 300 x 20 mm		2.77		\$536.80	\$193.79
	600 x 600 x 20 mm		5.56		\$536.80	\$96.54
Austral Dream						
Polished Standard Unit	600 x 300 x 20 mm		2.77		\$344.30	\$124.29
	600 x 600 x 20 mm		5.56		\$344.30	\$61.92

All prices noted are ex yard/pick up. Delivery charges will be priced on application.

All prices noted are ex yard/pick up. Delivery charges will be priced on application.

Adelaide Retail Price List. March 2023

Engineered Pavers from UrbanStone

Product / Finish	Number per pack	Number Per SQM	Per SQM
Coogee Sawcut All Colours			
400 x 400 x 40 mm	135	6.25	\$60.47
400 x 400 x 40 mm	-	6.25	\$72.94
600 x 400 x 40 mm	72	4.17	\$60.48
Rottnest Shot Blast All Colours			
400 x 200 x 40 mm		13	\$88.00
400 x 200 x 60 mm		13	\$107.25
400 x 400 x 40 mm	135	6.25	\$78.94
400 x 400 x 60 mm		6.25	\$93.94
600 x 400 x 40 mm	72	4.17	\$78.95
Rottnest Milled All Colours			
400 x 200 x 40 mm		13	\$117.70
400 x 200 x 60 mm		13	\$134.75
400 x 400 x 40 mm	135	6.25	\$99.00
400 x 400 x 60 mm		6.25	\$126.50
600 x 400 x 40 mm	72	4.17	\$99.00
Cottesloe Shot Blast All Colours			
400 x 200 x 40 mm		13	\$125.94
400 x 200 x 60 mm		13	\$137.50
400 x 400 x 40 mm	135	6.25	\$125.94
400 x 400 x 60 mm		6.25	\$136.94
600 x 400 x 40 mm	72	4.17	\$125.94
Cottesloe Milled All Colours			
400 x 200 x 40 mm		13	\$161.91
400 x 200 x 60 mm		13	\$180.94
400 x 400 x 40 mm	135	6.25	\$161.91
400 x 400 x 60 mm		6.25	\$180.94
600 x 400 x 40 mm	72	4.17	\$161.91

Engineered Pavers Bullnose Options

Standard Straight Cut Full Round Bullnose



All prices noted are ex yard/pick up. Delivery charges will be priced on application.

Please note: SQM = Square metre // LM = Linear metre // POA = Price on Application

Single Bullnose/Pool Copings from UrbanStone

Product / Finish	Number per pack	Number Per LM	Per LM
Coogee Sawcut All Colours			
400 x 400 x 40 mm Bullnose	72	2.5	\$60.50
400 x 400 x 40 mm Square Edge	72	2.5	\$60.50
600 x 400 x 40 mm Square Edge	72	1.67	\$60.50
400 x 400 x 40 mm Mitre/Radius	83	2.5	POA
400 x 400 x 40 mm Double	83	2.5	POA
400 x 335 x 40 mm Double	67	2.5	POA
Rottnest Shot Blast All Colours			
400 x 400 x 40 mm Bullnose	72	2.5	\$82.50
400 x 400 x 40 mm Square Edge	72	2.5	\$82.50
600 x 400 x 40 mm Square Edge	40	1.67	\$82.50
Rottnest Milled All Colours			
400 x 400 x 40 mm Bullnose	72	2.5	\$99.95
400 x 400 x 40 mm Square Edge	72	2.5	\$119.95
600 x 400 x 40 mm Square Edge	40	1.67	\$119.95
Cottesloe Shot Blast All Colours			
400 x 400 x 40 mm Bullnose	72	2.5	\$141.32
400 x 400 x 40 mm Square Edge	72	2.5	\$141.32

Adelaide Retail Price List. March 2023

Granite and Limestone from UrbanStone

Product / Finish	Number per pack	Number Per SQM	Per SQM	Per Unit
Endurastone Flamed finish - Silver Granite				
400 x 400 x 15 mm	125	6.25	\$101.58	\$16.25
400 x 400 x 25 mm	78	6.25	\$126.99	\$20.32
600 x 300 x 15 mm	136	5.56	\$111.74	\$20.13
600 x 300 x 25 mm	78	5.56	\$126.99	\$22.88
Endurastone Flamed finish - Grey Granite				
400 x 400 x 15 mm	125	6.25	\$126.99	\$20.32
400 x 400 x 25 mm	78	6.25	\$146.04	\$23.37
600 x 300 x 15 mm	136	5.56	\$126.99	\$22.88
600 x 300 x 25 mm	78	5.56	\$146.04	\$26.31
600 x 600 x 25 mm	39	2.78	\$146.04	\$52.72
Endurastone Flamed finish - Black Granite				
400 x 400 x 15 mm	125	6.25	\$146.04	\$23.37
400 x 400 x 25 mm	78	6.25	\$158.75	\$25.40
600 x 300 x 15 mm	136	5.56	\$146.04	\$26.31
600 x 300 x 25 mm	78	5.56	\$158.75	\$28.60
600 x 600 x 25 mm	39	2.78	\$158.75	\$57.31
Endurastone Flamed finish - Basalt Granite				
400 x 400 x 30 mm	360	16.67	\$158.75	\$25.40
600 x 400 x 30 mm	135	6.25	\$158.74	\$38.16
600 x 300 x 15 mm	72	4.17	\$146.05	\$26.31
600 x 300 x 25 mm	67	5.55	\$152.40	\$27.46
600 x 600 x 25 mm	44	2.77	\$152.40	\$55.02
Terre Tumbled finish - Marigold				
400 x 400 x 30 mm	66	6.25	\$101.58	\$16.25
600 x 400 x 30 mm	66	4.17	\$101.58	\$24.42
1.44 sq metre French Pattern	11	0.69	\$165.11	\$116.28
Terre Tumbled finish - Oryx				
600 x 400 x 30 mm	66	4.17	\$114.28	\$27.47

Granite Bullnose Options

Standard Straight Cut Bullnose Full Round Chamfered Rebated



All prices noted are ex yard/pick up. Delivery charges will be priced on application.

Please note: SQM = Square metre // LM = Linear metre // POA = Price on Application

Single Bullnose/Pool Copings from UrbanStone

Product / Finish	Number per pack	Number Per LM	Per LM	Per Unit
Endurastone Flamed finish - Silver Granite				
400 x 400 x 30 mm Bullnose	68	2.5	\$69.81	\$27.93
400 x 400 x 30 mm Chamfered	68	2.5	\$82.52	\$33.01
600 x 300 x 30 mm Bullnose	68	1.66	\$69.81	\$42.05
600 x 300 x 30 mm Chamfered	68	1.66	\$82.52	\$49.71
600 x 300 x 20/50 mm Rebated	68	1.66	\$82.52	\$49.71
Endurastone Flamed finish - Grey Granite				
400 x 400 x 30 mm Bullnose	68	2.5	\$82.52	\$33.01
400 x 400 x 30 mm Chamfered	68	2.5	\$95.22	\$38.09
600 x 300 x 30 mm Bullnose	68	1.66	\$82.52	\$49.71
600 x 300 x 30 mm Chamfered	68	1.66	\$95.22	\$57.36
600 x 300 x 20/50 mm Rebated	68	1.66	\$95.22	\$57.36
Endurastone Flamed finish - Black Granite				
400 x 400 x 30 mm Bullnose	68	2.5	\$38.09	\$95.22
400 x 400 x 30 mm Chamfered	68	2.5	\$43.17	\$107.93
600 x 300 x 30 mm Bullnose	68	1.66	\$57.36	\$95.22
600 x 300 x 30 mm Chamfered	68	1.66	\$65.02	\$107.93
600 x 300 x 20/50 mm Rebated	68	1.66	\$65.02	\$107.93
Endurastone Flamed finish - Basalt Granite				
400 x 400 x 30 mm Bullnose	68	2.5	\$101.58	\$40.63
400 x 400 x 30 mm Chamfered	66	2.5	\$114.28	\$45.71
600 x 400 x 30 mm Bullnose	66	1.66	\$101.58	\$61.19
600 x 400 x 30 mm Chamfered	66	1.66	\$114.28	\$68.84
600 x 400 x 20/50 mm Rebated	40	1.66	\$114.28	\$68.84

*Polished Chamfered bullnose is available for all Endurastone colours except Bluestone at a cost of \$10+ GST per lineal metre

Adelaide Retail Price List. March 2023

Accessories

Product	Size (L)	Per Unit
Sealers		
NPS (Natural-look Penetrating Sealer) 1LT	6	\$70.57
NPS (Natural-look Penetrating Sealer) 4LT	2	\$224.80
NPS (Natural-look Penetrating Sealer) 10LT	each	\$534.27
NPS (Natural-look Penetrating Sealer) 20LT	each	\$991.23
Colour Enhancer Pro 1LT	6	\$78.75
Colour Enhancer Pro 4LT	2	\$295.57
Colour Enhancer Pro 10LT	each	\$722.05
Colour Enhancer Pro 20LT	each	\$1,374.55
Pre-Seal 1LT	10	\$28.02
Microfibre Applicator	each	\$22.09
Black metal drum taps - singles	1	\$5.11
Neutral Cleaner 1LT	6	\$28.02
Neutral Cleaner 4LT	3	\$95.93
Neutral Cleaner 15LT	15	\$298.23
HDC (Heavy Duty Cleaner) 1LT	10	\$30.48
HDC (Heavy Duty Cleaner) 4LT	3	\$115.16
HDC (Heavy Duty Cleaner) 20LT	each	\$460.23
Phosphoric Acid Cleaner 1LT	10	\$25.36
Bright As 4LT	3	\$94.50
Efflorescence Off 4LT	3	\$107.18
Safe Acid 1LT	1	\$33.95
Safe Acid 4LT	3	\$106.98
Safe Acid 15LT	each	\$351.00
Sand, Cement and Mortar		
Crème Mortar Bagged	20kg	\$10.14
Mortex - Black	20 KG	\$16.54
Mortex - Grey	20 KG	\$15.44
Mortex - White	20 KG	\$18.19
Accessories		
Block Clamp	4L	\$71.66

Disclaimer

Please refer to manufacturers guidelines and installation for full details.
Please note that sealers may affect the slip resistance and appearance of pavers. Austral Masonry/UrbanStone takes no responsibility for the selection or resulting impact through use of sealers, adhesives, or other installation accessories.
Pavers used around salt water pools must be sealed.

All prices noted are ex yard/pick up. Delivery charges will be priced on application.



Discover More

Inspiration doesn't always come naturally, and your project is going to be there for a long time, so it's worth taking your time to enjoy the creative process. From visiting us at our Design Centres and Studios, and exploring our iVisualise Tools online, to chatting in person or over the phone, we're here to help.



Discover

Brickworks Design Centres or Studios

Your local Brickworks design centre or studio is a one-stop destination for advice and inspiration, where you can experience the quality of our product range first-hand. Our experienced consultants will guide you through the range and help you find the best possible solution for your project – within your budget.

Call.
1300 Masonry

Create

iVisualise Tools

Using artificial intelligence and digital technology, you're now able to experience colours, forms and profiles with our online colour visualisation tool. iVisualise helps make selection seamless and simple – whether you're looking for a traditional product, or something more contemporary.

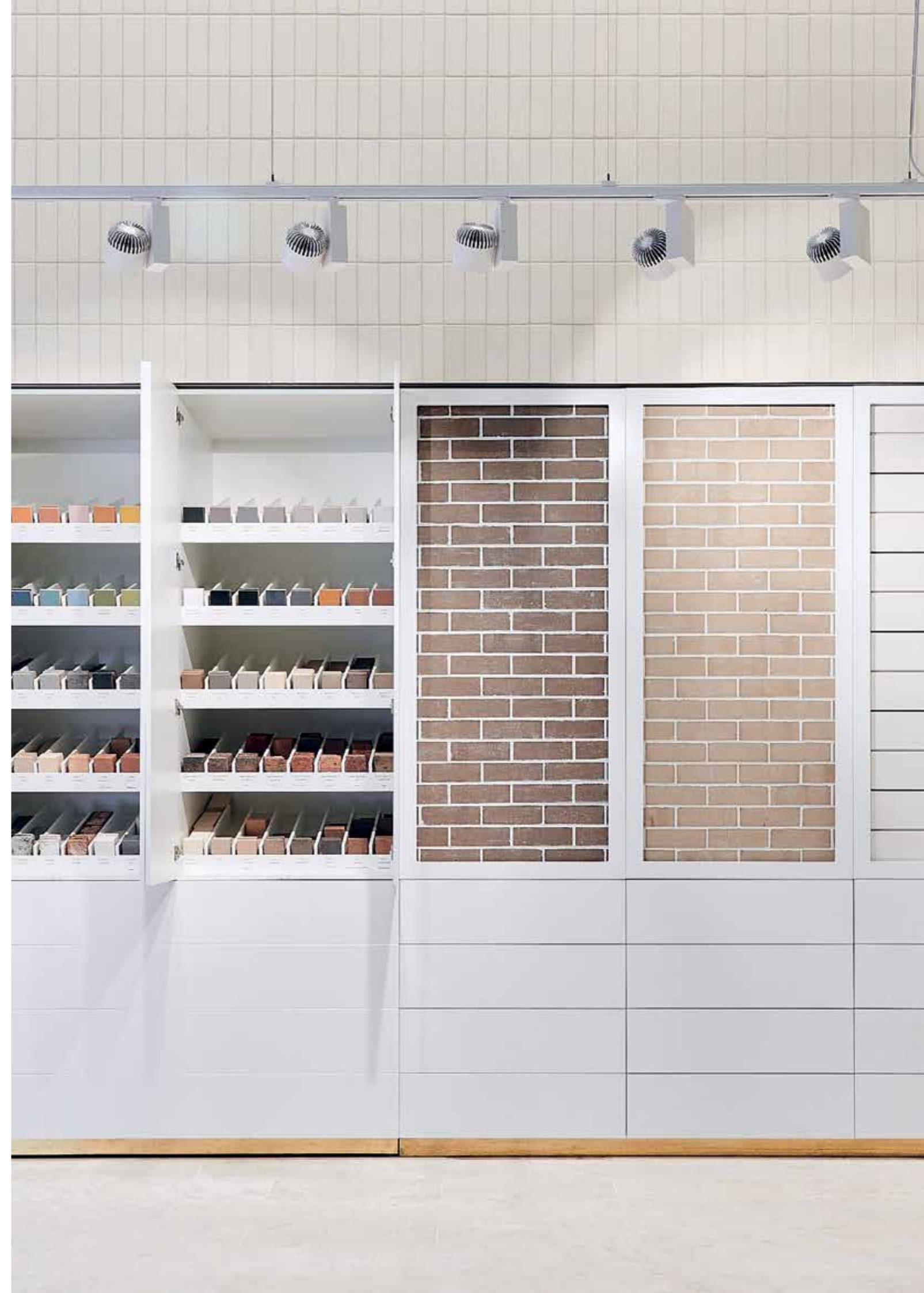
Visit.
australmasonry.com.au/ivisualise

Learn

Colour Consultations

Building or renovating a home is a major investment – and it should be an enjoyable experience for you. We can help with a one-to-one colour consultation where our experts can guide you on colour trends, the right fit and style, and ideas that will give you a genuinely individual look.

Book.
brickworks.com.au/colour



Visit. brickworks.com.au

Call. 13 BRICK

Design Centres

Adelaide

Tel. 08 8443 2222
70 Hindmarsh Square
Adelaide SA 5000

Golden Grove

Tel. 08 8282 6301
201 Greenwith Rd
Golden Grove SA 5125

Follow Us



Terms and conditions

Delivery charges - Delivery charges will vary based on your delivery location, order quantities and various other factors which is why they are priced on application. A delivery surcharge of \$225.50 including GST applies for clay bricks, pavers and terracotta wall cladding for orders under 4 pallets. A delivery surcharge of \$150.00 including GST applies for orders of masonry blocks, concrete sleepers, retaining wall blocks and stone, granite, porcelain marble, & concrete pavers under 4 pallets to Adelaide metropolitan areas. cartage rates assume a maximum of 1 hour site work. If your delivery takes longer than 1 hour of site work additional charges will apply. Any delivery charges noted are to Metro areas only.

Additional Charges - The brick prices on this list will be increased by \$1.65 per thousand to include an Australian Competition and Consumer Commission Authorised Brick & Block Careers Training Contribution. Additional charges may apply and will be advised with your quote.

Returns - Returns will not be accepted. Claims for faulty products will not be accepted once laid. No returns are accepted arising from over ordering.

Pallets - All pallets remain the property of Brickworks and must be returned but are NON REFUNDABLE.

Product orders - Under no circumstances shall Brickworks be liable for over or under ordering of product. Whilst Brickworks and it's employees may provide assistance in calculating quantities, it does not provide a Guarantee of accuracy and always recommends allowances for wastage, breakages and chipping.

Breakage & Chipping - Every care is taken to minimise breakage and chipping. Brickworks and its associated companies will not accept claims for chipping and breakages Under 5% in volume of number of the delivered product.

Size Variation - The stated sizes are nominal sizes only. Size variation can occur as a consequence of the manufacturing process. In respect of specially fired products, abnormal shrinkage occurs and there can be marked size variations.

Site Damage - Brickworks will take as much care as possible when delivering your product. However, accidents can occur. Regretfully Brickworks and its associated companies will not be responsible for any damage or injury to persons, creatures or property. Please ensure our drivers have easy access.

Colour Variation - All blend bricks/blocks are sold as a blend. Because of the manufacturing process, some colour variation can occur. Our ranges are composed of natural product and as such subject to colour variation. The colours shown in the brochure may vary slightly from the Actual products due to colour variances in the printing process. All endeavours are made to match the colour of pavers and bricks at Brickworks display Centres but some slight variance may occur. It is recommended when laying pavers or brick/blocks to work from 3 pallets at any one time.

Purchase Price - All goods are sold subject to the conditions of sale of Brickworks and all prices are subject to increase without notice. Unless otherwise agreed in writing all sales are made by the sellers at the sellers ruling price at time of delivery. All prior quotations will be subject to alteration accordingly.

Vanadium Efflorescence on Brickwork - Efflorescence (leaking of natural salts causing a powdery deposit which detracts from appearance) and other damage may occur if bricks are used in situations of insufficient damp or water proofing or if they are subject to abnormal water quantities eg downpipe water. For example, double leaf walls which have no roof cover should be properly capped. Brickworks will not be responsible for any deterioration where bricks are insufficiently damp or water-proofed or where they are subject to abnormal quantities of water. It is characteristic of all the light burning clays from which bricks are manufactured by Brickworks that they contain small quantities of natural salts called vanadium salts. These water soluble salts can migrate to the surface of bricks and crystallise there as moisture dries from the brickwork. The resulting efflorescence is coloured (yellow green/ brown/blue) if the salt crystallise in an acid environment. An acid environment can occur quite naturally at the surface of bricks, especially if the bricks are subject to excessive amounts of water during construction. They are colourless if he environment is neutral or slightly alkaline. The coloured efflorescence is naturally occurring and is harmless and is removable either by normal weathering processes or by simple treatments. Vanadium efflorescence does not cause any damage to the structure and characteristics of Brickworks, nor will the treatments approved by Brickworks to remove the colouring.

For further information contact Brickworks or your Brickworks agent. Please refer to the Brickworks website for full terms & conditions.
