

URBANSTONE®

# Commercial Premium Paving and Stone

National Collection





What’s inside

- 1 – Engineered Pavers p<sup>11</sup>
- 2 – Natural Stone p<sup>20</sup>
  - Australian Granite p<sup>24</sup>
  - Australian Marble p<sup>26</sup>
- 3 – Accessories p<sup>30</sup>
  - Edge Finishes p<sup>32</sup>
  - Step Treads p<sup>32</sup>
  - Cobbletop p<sup>34</sup>
  - Bollards p<sup>35</sup>
  - Tactile Pavers p<sup>35</sup>
- 4 – Get in Touch p<sup>36</sup>

UrbanStone acknowledges the Australian Aboriginal and Torres Strait Islander peoples of this nation. We acknowledge the traditional custodians of the lands on which our company is located and where we conduct our business.

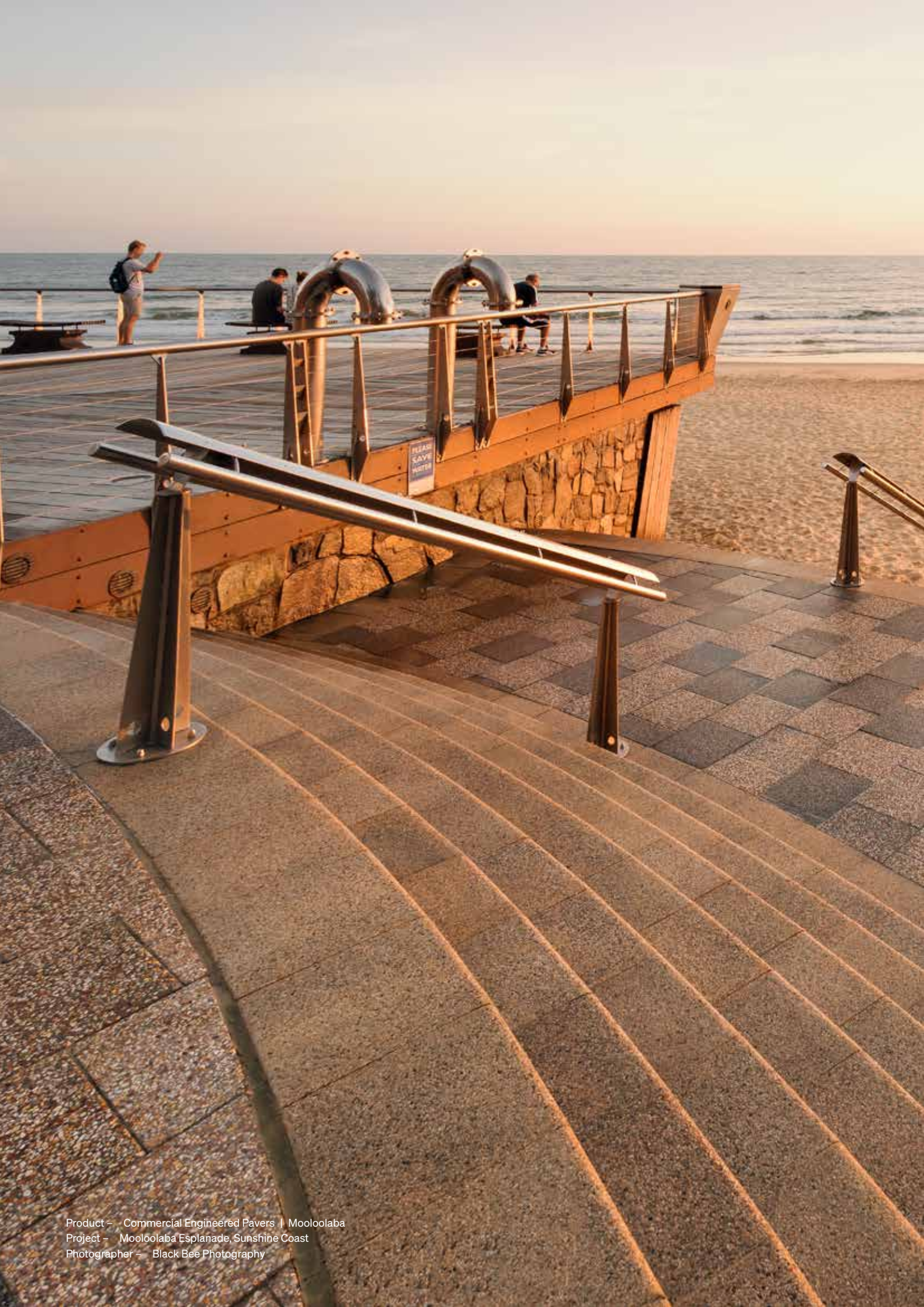
We pay our respects to ancestors and Elders, past and present. UrbanStone is committed to honouring Australian Aboriginal and Torres Strait Islander peoples’ unique cultural and spiritual relationships to the land, waters and seas and their rich contribution to society.

Cover:  
Product – Australian Granite | Austral Juperana  
Project – Southbank, Brisbane  
Architect – Hassell Architects  
Photographer – Black Bee Photography

A BRAND OF  
**BRICKWORKS**







Be Inspired by Our landscape.  
Be Inspired by UrbanStone

—  
Our landscape has been crafted by  
time and shaped by the elements with  
iconic colours and enduring textures.

At UrbanStone our pavers and  
stone capture the natural beauty,  
timeless character and diversity  
of our far reaching land.

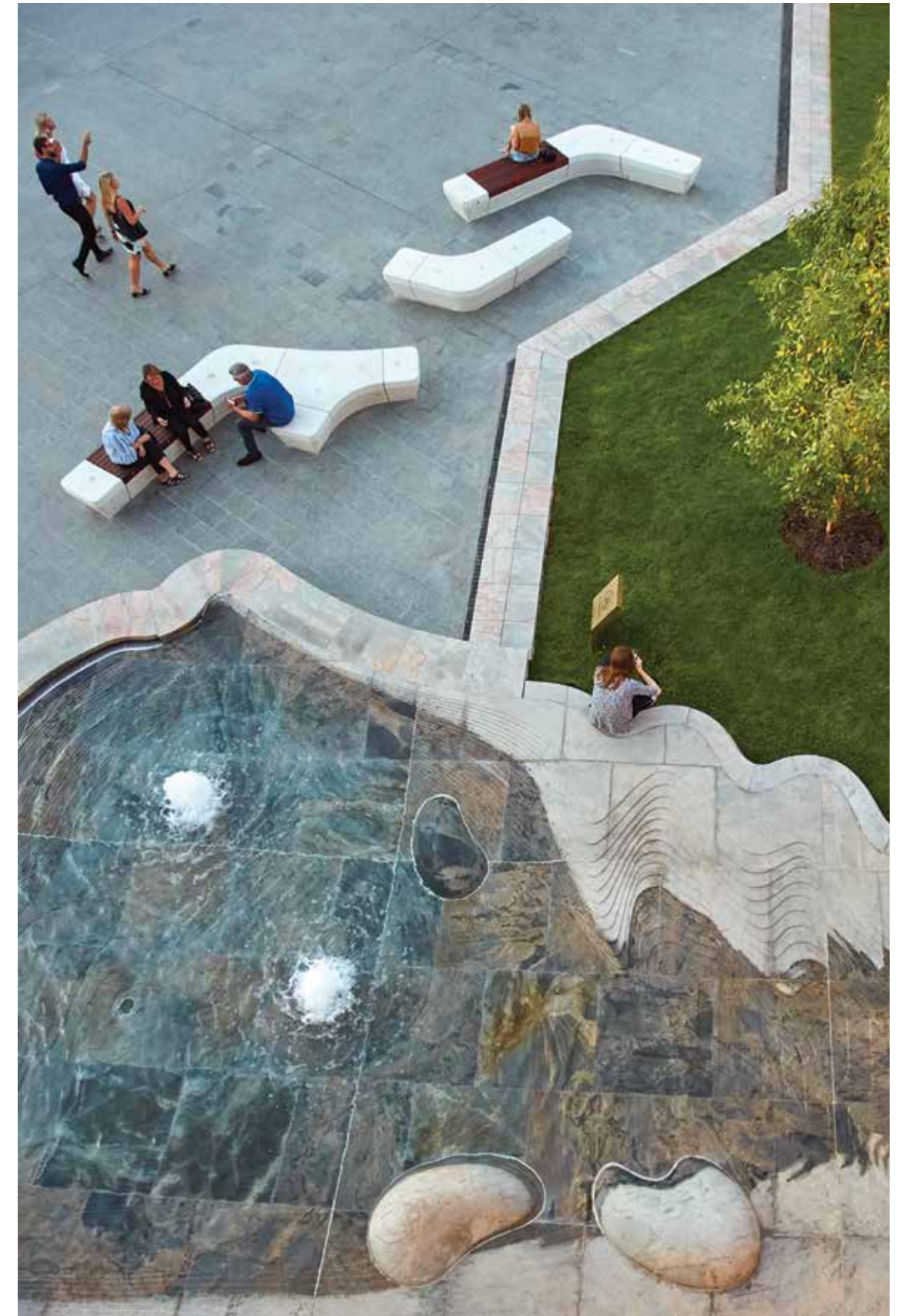
Locally sourced, sustainably made  
and Australian owned – we're  
intimately connected to the spirit  
that flows through our products and  
the destinations we help to create.



## Commercial Collection Endless Possibilities

UrbanStone's Commercial collection has been crafted for large projects seeking a point of distinction. Made to your specifications, in custom colours, unique sizes and with a finish selected to suit your project or design.

UrbanStone can provide a long lasting statement with intricate detail, to create aspirational designs that define the landscape, or make stronger connections to places through meaningful stories. Tap into its unlimited potential.



Product – Australian Granite | Austral Juperana.  
Project – Yagan Square  
Architects – Lyons, IPH Architects, Aspect Studios  
Artist – John Tarry





# The Benefits

UrbanStone paving has all the right qualities for any project of distinction.

1.

**Easy to install**  
Crafted with outstanding dimensional accuracy, our pavers are easier, simpler and quicker to install.
2.

**Low maintenance**  
When you build with UrbanStone products, you're working with the highest quality material that requires minimal maintenance.
3.

**Long lasting**  
Our entire paving collection offers outstanding longevity, so the products you install today will look stunning for years to come.
4.

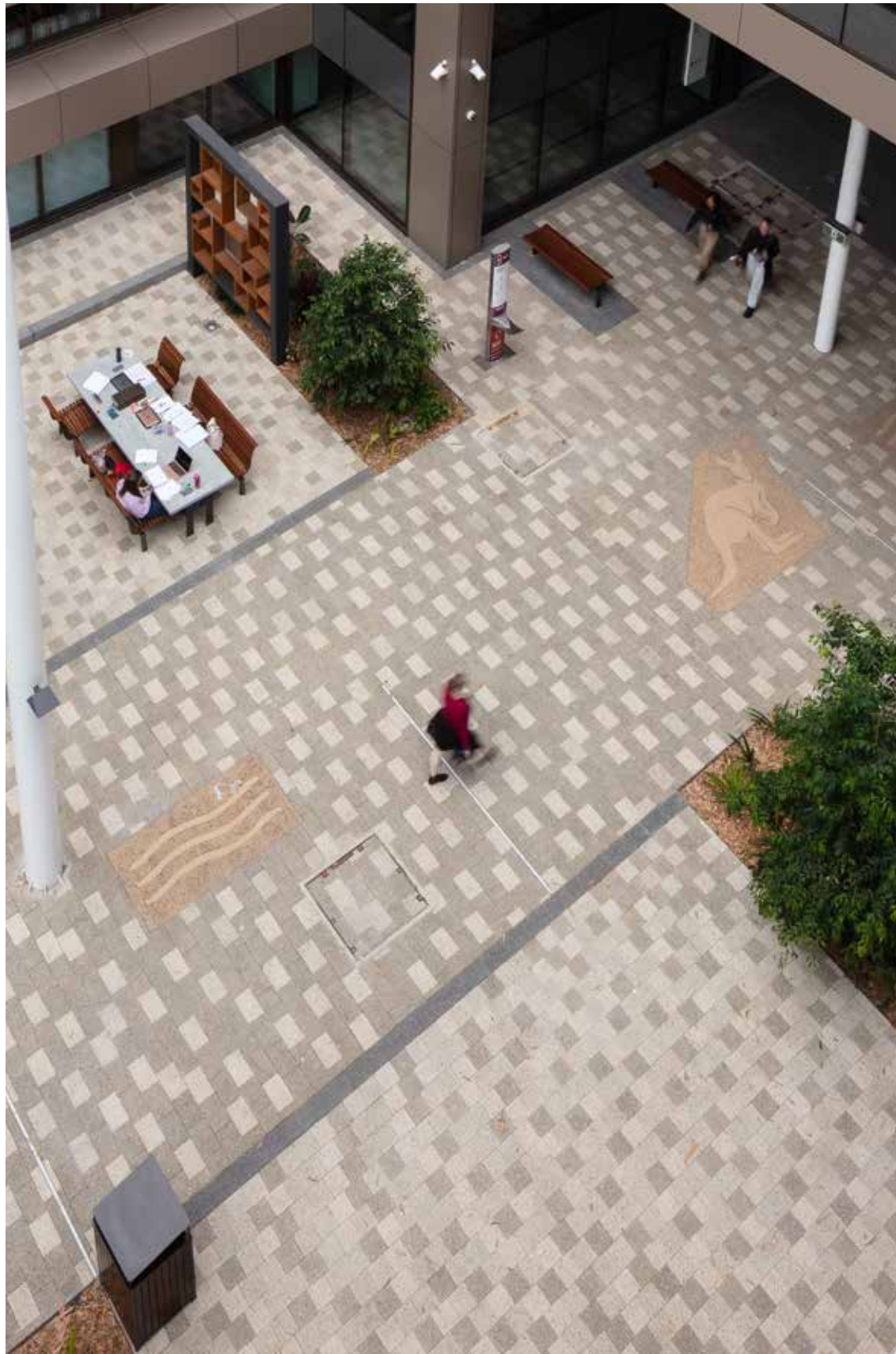
**Slip resistance**  
Selected product ranges offer excellent slip resistance which makes them perfect for applications in wet areas like pools.
5.

**Environmentally aware**  
We've designed our production processes to minimise impact on the environment, ensuring they do not deplete precious natural resources.
6.

**Superior strength**  
UrbanStone products have great strength and are extremely durable. They can endure significant abrasion from external forces with minimal, if any deterioration.
7.

**Australian Made**  
Our Engineered pavers are manufactured in Perth using locally sourced materials. We are also one of the few suppliers of Australian granites and marbles.





Product – Commercial Engineered Pavers | Macquarie  
 Project – Macquarie University Arts Precinct, Sydney  
 Architect – Architectus  
 Landscape Architect – GROUP GSA Landscape Architects  
 Photographer – Alex Mayes

# Commercial Engineered Pavers

Crafted in custom made colours, finishes  
and sizes to suit your design, our  
Engineered pavers are made for you.

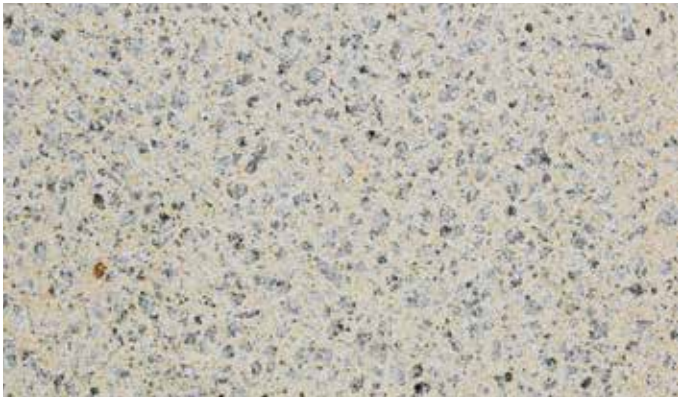
– Engineered Series p<sup>12</sup>

1



# Commercial Engineered Pavers by UrbanStone

Creating a commercial engineered paver involves 4 simple steps.



1.

### Select your Colour

Every paver starts with one base colour.

To select the colour for your paver you can select from existing examples, bring us an example to match, or visit our Brickworks Design Studios for a complementary colour consultation.

2.

### Select your Aggregate

UrbanStone source the finest aggregates, with a selection captured from across Australia.

You can choose just one aggregate to use, or mix and match with various aggregates for a truly unique design.



3.

### Select your Finish

Our finish selection includes: shot blast, milled, honed and honed shot options.

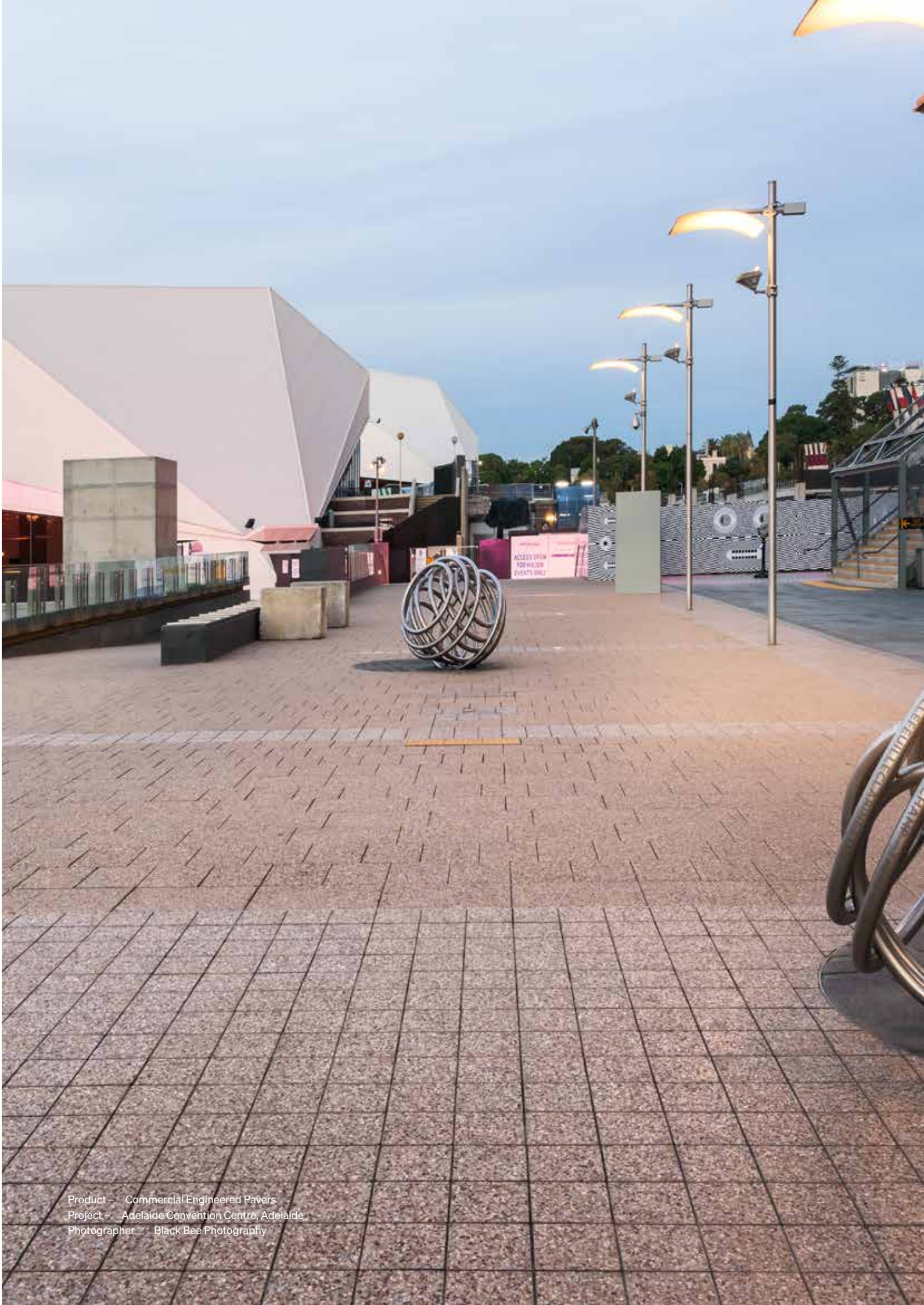
Each finish will have notable impact on the appearance of the paver, by exposing aggregate or adding a subtle sheen to the surface finish. Finish selections also have a notable impact on slip ratings.

4.

### Select your Size

We offer an extensive range of sizes and thicknesses to suit various designs and applications.

To explore the sizes and thickness options available please see page 28 of this brochure or contact your local UrbanStone representative.



Product – Commercial Engineered Pavers  
Project – Adelaide Convention Centre, Adelaide  
Photographer – Black Bee Photography

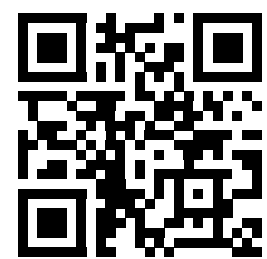


Unlimited Choice  
Endless Possibilities

---

**The UrbanStone Colour Selector**

Scan the QR code to explore a superb range of existing designs and colours that can provide a very distinctive effect, or design your own.



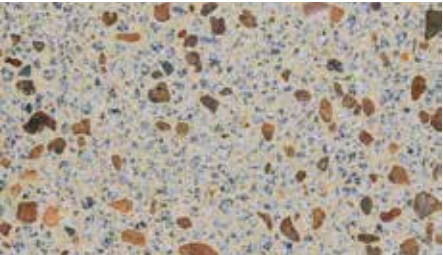


# Commercial Engineered Pavers

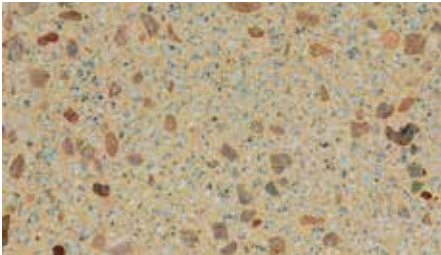


Select from the range shown, explore more options on the UrbanStone Colour Selector, or design your own.

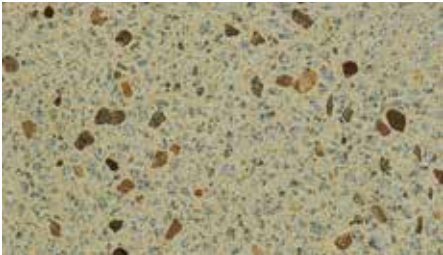
## Colours



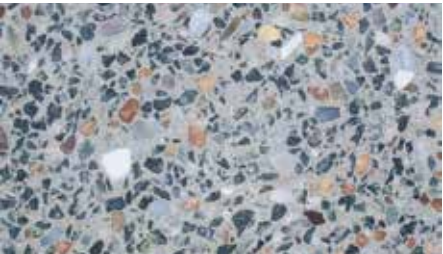
Albany Beige | Honed



Albany Beige | Milled



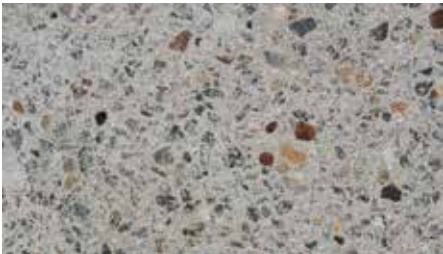
Albany Beige | Shot Blast



Casino Grey | Honed



Casino Grey | Milled



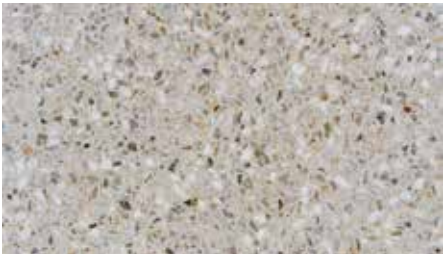
Casino Grey | Shot Blast



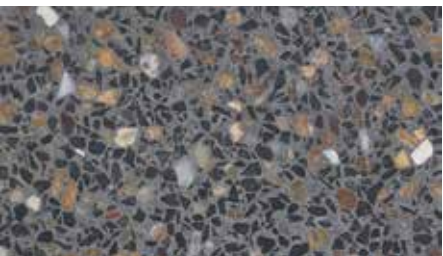
Fleece | Honed



Fleece | Milled



Fleece | Shot Blast



Golden Gunmetal | Honed



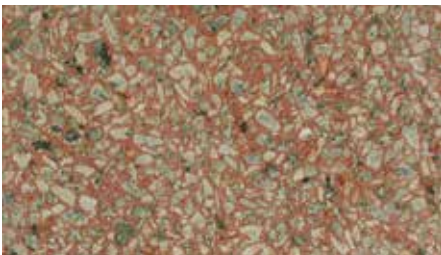
Golden Gunmetal | Milled



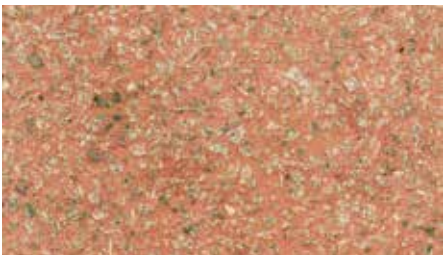
Golden Gunmetal | Shot Blas



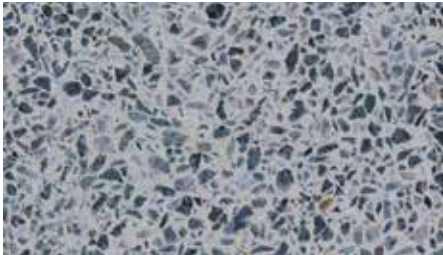
Granite Bronze | Honed



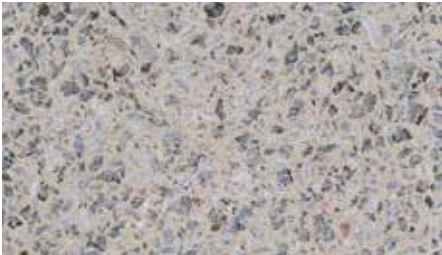
Granite Bronze | Milled



Granite Bronze | Shot Blast



Granite Cream | Honed



Granite Cream | Milled



Granite Cream | Shot Blast



Gunmetal | Honed



Gunmetal | Milled



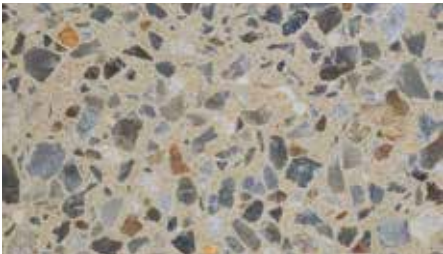
Gunmetal | Shot Blast



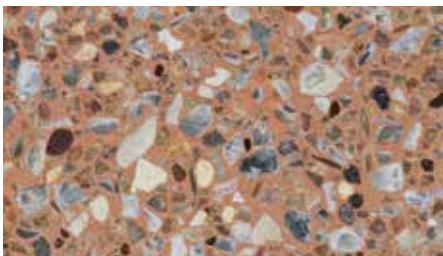
Ivory | Honed



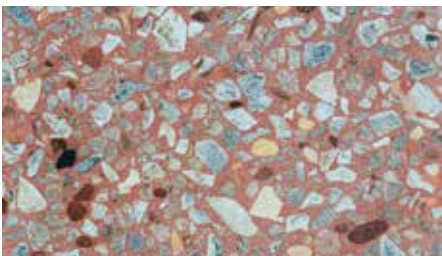
Ivory | Milled



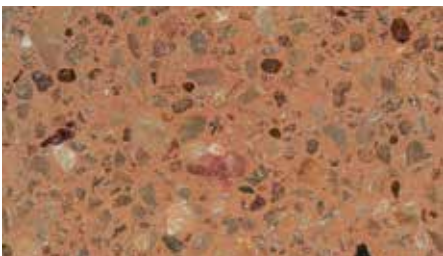
Ivory | Shot Blast



New Amber | Honed



New Amber | Milled



New Amber | Shot Blast



PCC | Honed



PCC | Milled



PCC | Shot Blast

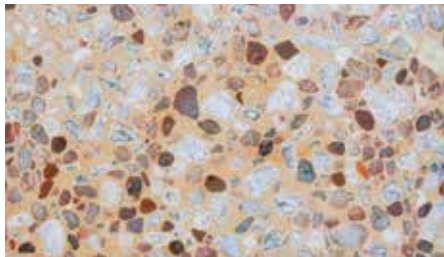


# Commerical Engineered Pavers

Select from the range shown, explore more options on the UrbanStone Colour Selector, or design your own.



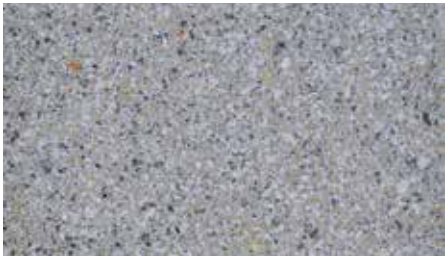
River Topaz | Honed



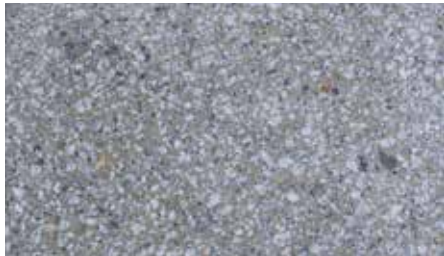
River Topaz | Milled



River Topaz | Shot Blast



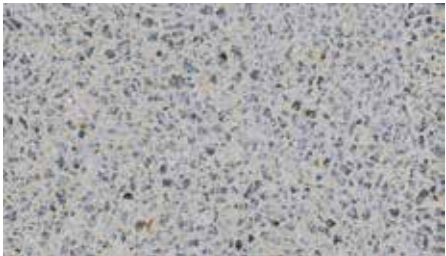
Silver Grey | Honed



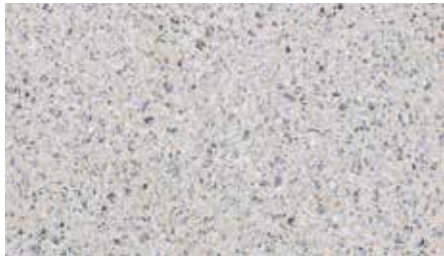
Silver Grey | Milled



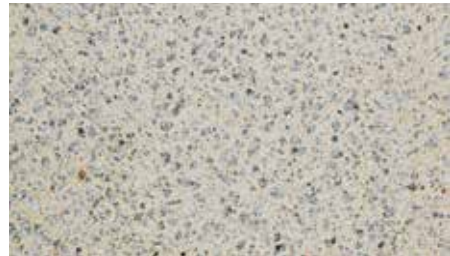
Silver Grey | Shot Blast



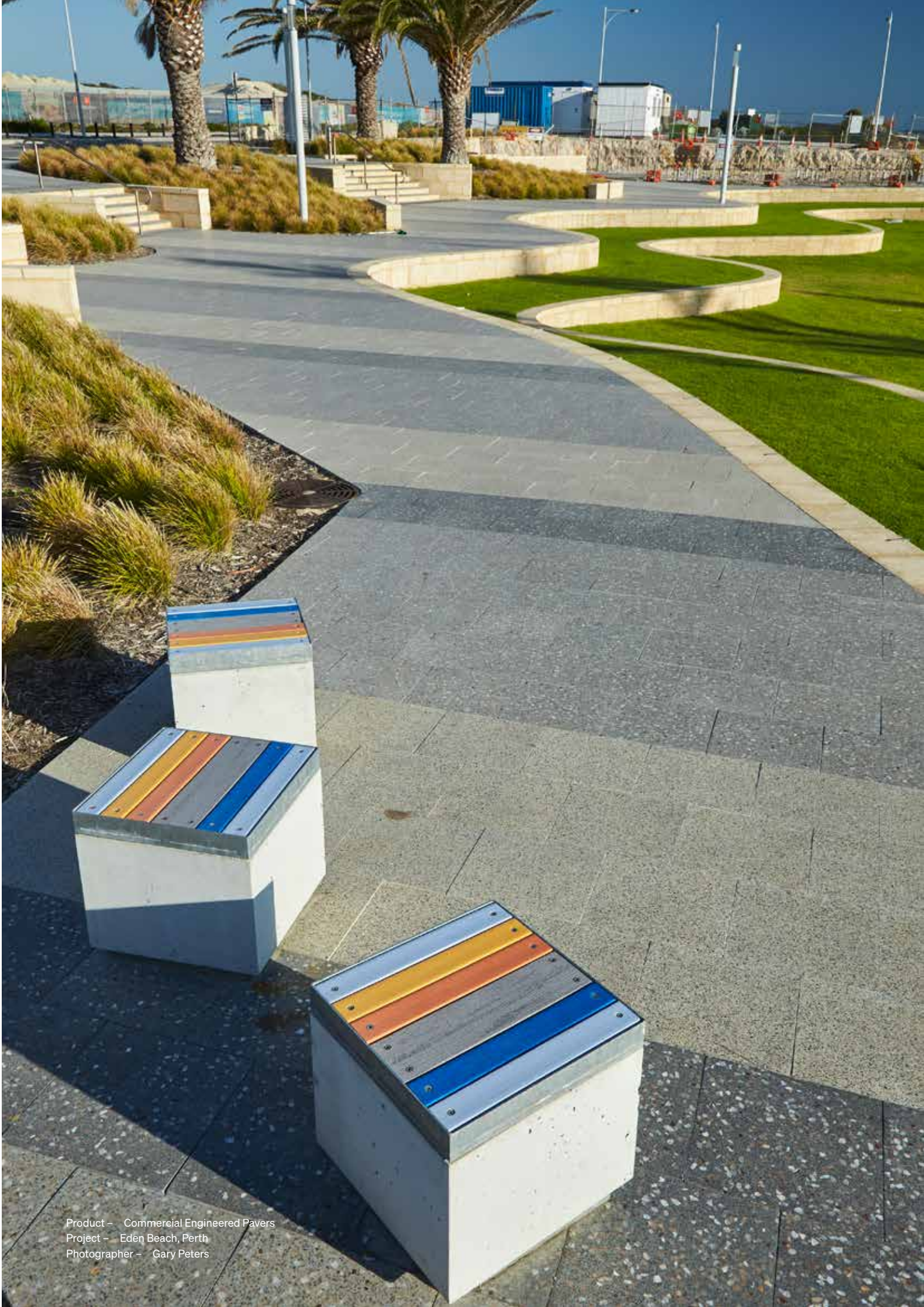
Western Cream | Honed



Western Cream | Milled



Western Cream | Shot Blast



Product – Commercial Engineered Pavers  
Project – Eden Beach, Perth  
Photographer – Gary Peters





# Commercial Natural Stone

Our Australian granites and marbles are created by nature and refined by UrbanStone with a range of colours sourced from the Australian landscape.

Each Natural Stone product is custom made in virtually any size you can think of, with natural, locally sourced colours and a plethora of finishing options available to suit your design.

- Australian Granite p<sup>18</sup>
- Australian Marble p<sup>20</sup>

# 2



# Commercial Natural Stone by UrbanStone

Creating a commercial natural stone product involves 3 simple steps.



1.

### Select your Colour

UrbanStone a selection of Australian granites and marbles with eye catching, natural colours.

To make your selection you can choose from the colours on pages 24 to 26 or visit our Brickworks Design Studios for a complementary colour consultation.



2.

### Select your Finish

Our finish selection varies between granite and marble and includes: exfoliated, honed, honed shot and polished options.

Each finish will have notable impact on the appearance of the paver and can add a subtle sheen to the surface finish. Finish selections also have a notable impact on slip ratings.

3.

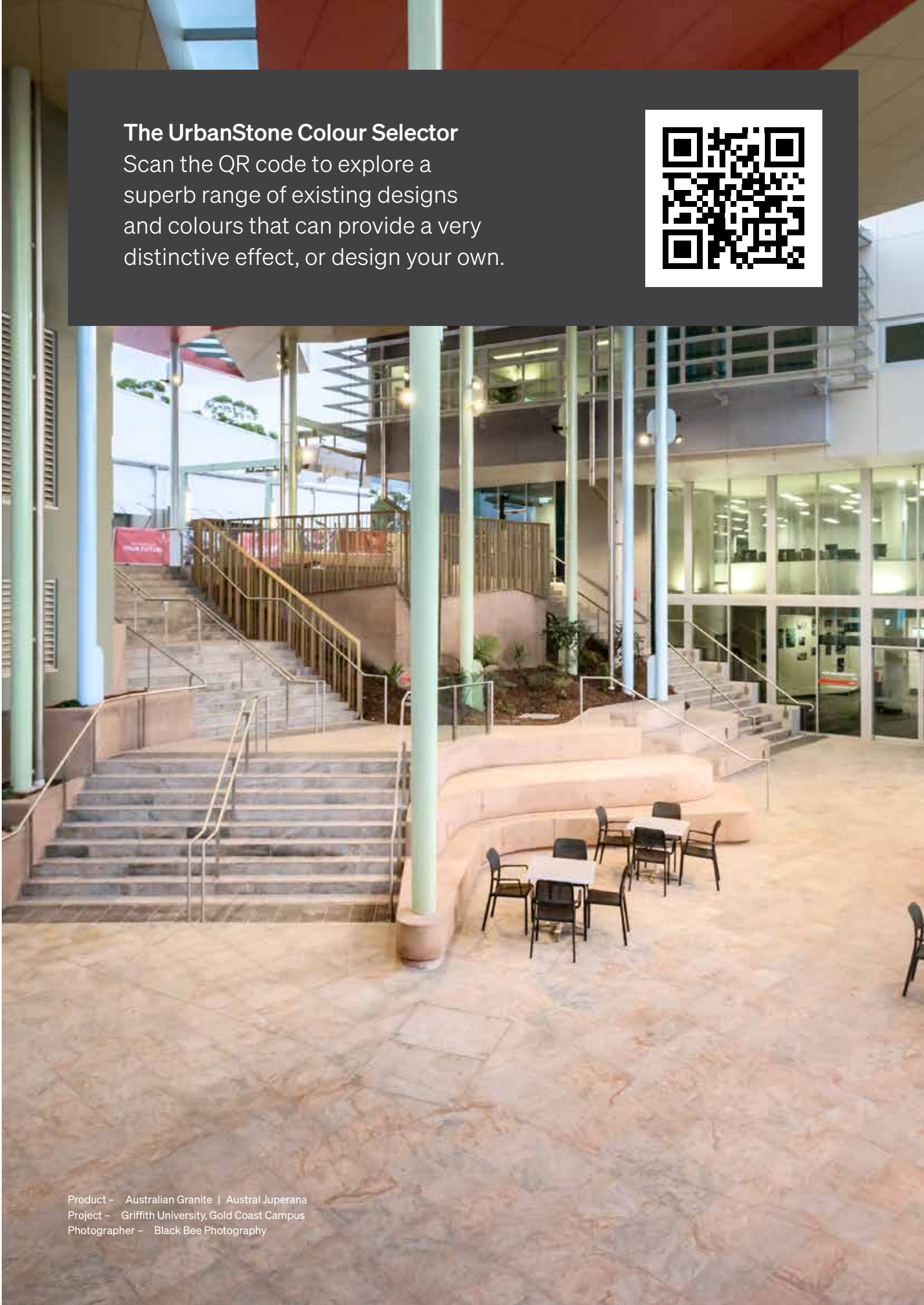
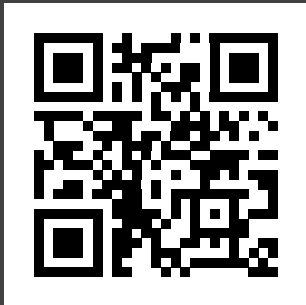
### Select your Size

We offer an extensive range of sizes and thicknesses to suit various designs and applications.

To discuss the sizes and thickness options available please contact your local UrbanStone representative.

## The UrbanStone Colour Selector

Scan the QR code to explore a superb range of existing designs and colours that can provide a very distinctive effect, or design your own.



Product – Australian Granite | Austral Juperana  
Project – Griffith University, Gold Coast Campus  
Photographer – Black Bee Photography



# Australian Granite

The natural origins of the Australian Granite collection tell a tale rooted in the very ground from which they're forged - a tale of strength and capability, but also one of a gentle elegance that can only be created from our earth's rich foundations.

## Colours



Austral Coffee



Austral Juperana



Austral Black



Desert Rose



Desert Brown



Garnet Ice



Balmoral Green



Austral Verde



Product – Australian Granite | Austral Juperana  
Project – Southbank, Brisbane  
Architect – Hassell Architects  
Photographer – Black Bee Photography



# Australian Marble

From the breathtaking gorges and vast chasms of Karijini National Park, with swirling purple, white and orange minerals, to the hills of Millstream-Chichester, and the sweeping plains that edge from green to red like a larger than life chess board, the Australian Marble collection captures colours that are diverse and enchanting as their birthplace in Western Australia’s Pilbara region.

## Colours



Pilbara Red



Pilbara Green



Austral Pearl



Austral Dream






# Commercial Paver Sizes

## Engineered Pavers

Range	Series	Finishes Available	Size (mm)	Weight
Commercial Paving	200 Series	Shot Blast   Milled   Honed   Honed Shot	200L × 200W × 40H 200L × 200W × 60H	3.8kg 5.7kg
Commercial Paving	300 Series	Shot Blast   Milled   Honed   Honed Shot	300L × 150W × 40H 300L × 150W × 60H	4.32kg 6.5kg
Commercial Paving	300 Series	Shot Blast   Milled   Honed   Honed Shot	300L × 200W × 40H 300L × 200W × 60H 300L × 200W × 70H	5.7kg 8.6kg 10kg
Commercial Paving	300 Series	Shot Blast   Milled   Honed   Honed Shot	300L × 300W × 40H 300L × 300W × 60H	12.9kg
Commercial Paving	300 Series	Shot Blast   Milled   Honed   Honed Shot	400L × 300W × 40H 400L × 300W × 60H	11.5kg 17.2kg
Commercial Paving	300 Series	Shot Blast   Milled   Honed   Honed Shot	600L × 300W × 40H 600L × 300W × 50H 600L × 300W × 60H	17.28kg 17.2kg 25.8kg
Commercial Paving	300 Series	Shot Blast   Milled   Honed   Honed Shot	600L x 400W x 40H 600L x 400W x 50H 600L x 400W x 60H	23kg 28.8kg 34.5kg
Commercial Paving	300 Series	Shot Blast   Milled   Honed   Honed Shot	600L x 600W x 40H 600L x 600W x 50H 600L x 600W x 60H	34.4kg 43.2kg 51.8kg
Commercial Paving	400 Series	Shot Blast   Milled   Honed   Honed Shot	400L x 200W x 40H 400L x 200W x 60H	7.6kg 11.5kg
Commercial Paving	400 Series	Shot Blast   Milled   Honed   Honed Shot	400L x 400W x 40H 400L x 400W x 50H 400L x 400W x 60H	15.3kg 19.2kg 23kg
Commercial Paving	400 Series	Shot Blast   Milled   Honed   Honed Shot	400L x 500W x 40H 400L x 500W x 60H	19.2kg 28.8kg
Commercial Paving	400 Series	Shot Blast   Milled   Honed   Honed Shot	800L x 400W x 50H 800L x 400W x 60H	38.4kg 46kg
Commercial Paving	500 Series	Shot Blast   Milled   Honed   Honed Shot	490L x 245W x 40H 490L x 245W x 50H 490L x 245W x 60H	11.5kg 14.4kg 17.2kg
Commercial Paving	500 Series	Shot Blast   Milled   Honed   Honed Shot	490L x 490W x 40H 490L x 490W x 50H 490L x 490W x 60H	23kg 28.8kg 34.4kg
Commercial Paving	500 Series	Shot Blast   Milled   Honed   Honed Shot	745L x 495W x 50H 745L x 495W x 60H	44.25kg 53.1kg
Commercial Paving	Step Tread	Shot Blast   Milled   Honed   Honed Shot	400L x 300W x 50H 400L x 300W x 60H	11.5kg 17.2kg
Commercial Paving	Step Tread	Shot Blast   Milled   Honed   Honed Shot	600L x 400W x 50H 600L x 400W x 60H	23kg 34.5kg
Tactile Paving	400 Series	Hazard or Directional	400L x 300W x 40H 400L x 300W x 60H	11.5kg 17.2kg
Tactile Paving	400 Series	Hazard or Directional	400L x 400W x 40H 400L x 400W x 60H	15.3kg 23.0kg
Tactile Paving	400 Series	Hazard or Directional	300L x 300W x 40H 300L x 300W x 60H	12.9kg 13.2kg

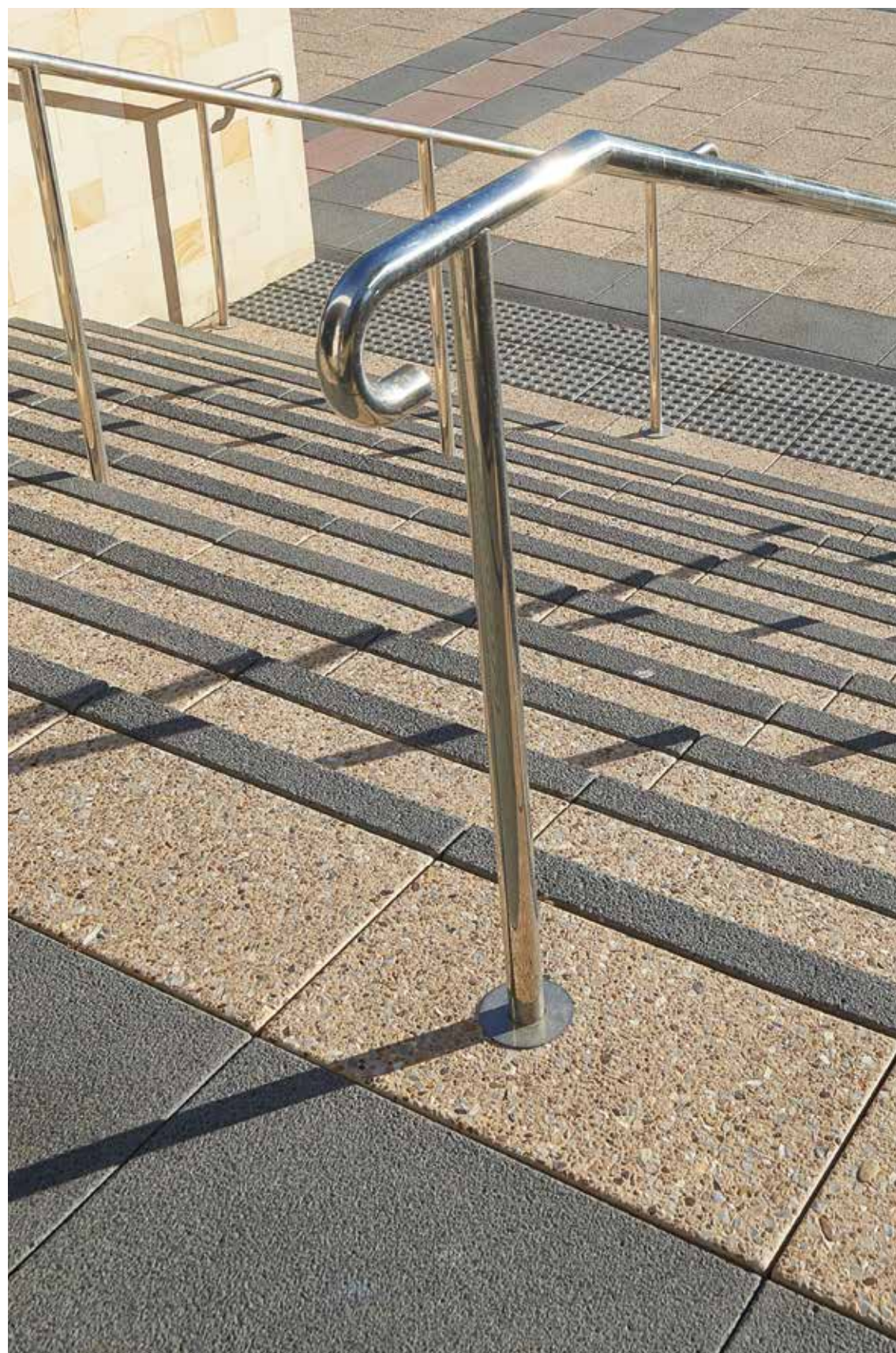
## Cobbletop

Profile	Product	Finishes Available	Size (mm)	Weight
	Cobbletop	Shot Blast   Milled   Honed	300L × 200W × 40H 300L × 200W × 60H 300L × 200W × 70H	-

## Australian Granite and Marble

We can offer an extensive range of custom sizes to suit your project. Please contact your UrbanStone representative to discuss Australian Granite or Marble products designed to suit your needs.





Product – Engineered Pavers and Dual Colour Step Treads  
Project – Joondalup Golf Resort, Perth  
Photographer – Gary Peters

# Accessories

The finishing touches to complete your pavescape design. Available in colours and finishes to complement our Engineered, Granite and Marble pavers.

The next few pages show some of the pavescape accessories available.

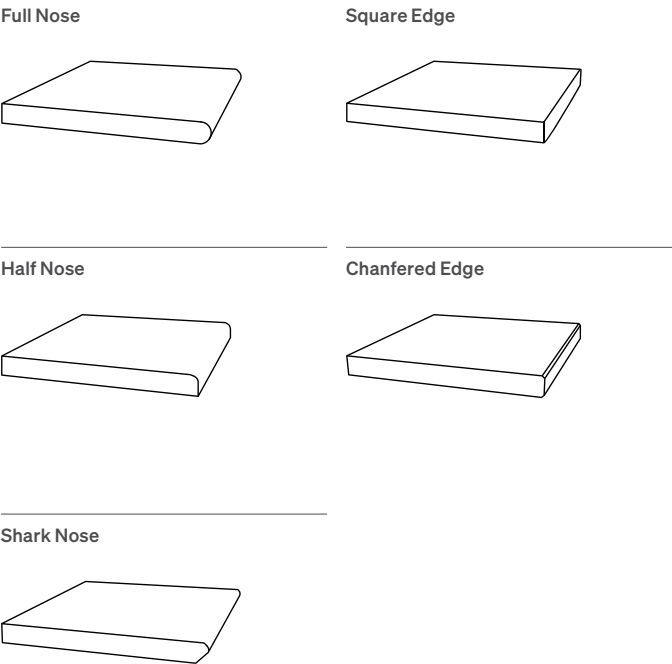
- Paver Edge Finishes p<sup>26</sup>
- Paving Accessories p<sup>28</sup>



# Paver Edge Finishes

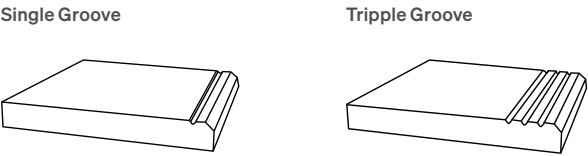
## Edge finishes

Whatever landscape design you have in mind, we can provide you with a edge finish that works. We have our standard range, and if there's a unique edge design that you're after to complete your project, feel free to contact one of our local UrbanStone professionals for a consultation.



## Stair treads

Stair treads are designed to match your UrbanStone paving. They're located at the front of the horizontal portion of a set of stairs and are commonly used to reduce slippage, particularly in commercial or industrial locations. We have standard options, and we can also provide custom solutions to suit your project.



Product – Australian Granite | Austral Juperana  
Project – Griffith University, Gold Coast Campus  
Photographer – Black Bee Photography

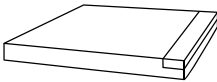


# Paving Accessories

## Dual step treads

Stylish dual colour step treads provide maximum nosing visibility and contrast, making sure steps are used safely and disability access codes are met.

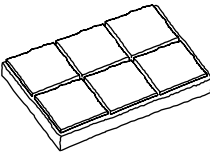
Profile



## Cobbletop

Featuring a bold rustic texture, the Cobbletop is available in a small format and gives the appearance of naturally hewn stone.

Profile



## Bespoke bollards

Bollards can work as a great complement to your paving design. Available in Natural Stone, we can offer our standard collection of bollard solutions, or we can custom make a bollard to your specification in a colour and finish based on your preferred design.

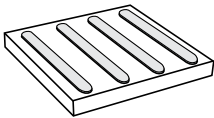


## Tactile paving

Available in Engineered or Natural Stone, our tactile paving is a textured ground surface indicator found on footpaths, stairs and train station platforms to assist pedestrians who are visually impaired. We offer the hazard and directional formats as per Australian standards.

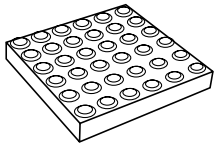
### Directional tactile paver

For direction or guidance, slot tactile pavers serve a great purpose.



### Hazard tactile paver

When you need to clearly indicate the end/edge of a paved area, dot or 'blister' style tactile paving is the perfect solution.





# Discover More

Inspiration doesn't always come naturally, and your project is going to be there for a long time, so it's worth taking your time to enjoy the creative process. From visiting us at our Design Studios, and exploring our iVisualise Tools online, to chatting in person or over the phone, we're here to help.



## Discover

### Brickworks Design Studios

Your local Brickworks design studio is a one-stop destination for advice and inspiration, where you can experience the quality of our product range first-hand. Our experienced consultants will guide you through the range and help you find the best possible solution for your project – within your budget.

Call.  
1800 Urbanstone

## Create

### iVisualise Tools

Using artificial intelligence and digital technology, you're now able to experience colours, forms and profiles with our online colour visualisation tool. iVisualise helps make selection seamless and simple – whether you're looking for a traditional product, or something more contemporary.

Visit.  
[urbanstone.com.au/ivisualise](http://urbanstone.com.au/ivisualise)

## Learn

### Colour Consultations

Building or renovating a home is a major investment – and it should be an enjoyable experience for you. We can help with a one-to-one colour consultation where our experts can guide you on colour trends, the right fit and style, and ideas that will give you a genuinely individual look.

Book.  
[brickworks.com.au/colour](http://brickworks.com.au/colour)





# Backed by Brickworks

Local expertise. Global quality. Brickworks Building Products are one of Australia’s biggest building material manufacturers. With heritage going all the way back to one of Australia’s founding brick producers, we’re proud of our reputation for design, innovation and sustainability.

## BRICKWORKS




### AUSTRALIA









### NORTH AMERICA



### EXCLUSIVE DISTRIBUTOR





Product – Engineered Pavers  
Project – Adelaide Convention Centre  
Photographer – Black Bee Photography



# Get in Touch

—  
For more information, advice  
and samples get in touch  
with the UrbanStone team.

Visit. [urbanstone.com.au](http://urbanstone.com.au)  
Call. 1800 872 267

Design Studios

<b>Sydney</b> Tel. 02 9611 4200 2 Barrack Street Sydney NSW 2000	<b>Melbourne</b> Tel. 03 8621 7777 367 Collins Street Melbourne VIC 3000	<b>Perth</b> Tel. 08 6332 5800 67 King Street Perth WA 6000	<b>Hobart</b> Tel. 03 6212 9120 210 Elizabeth Street Hobart TAS 7000
<b>Brisbane</b> Tel. 07 3634 5604 27 James Street Fortitude Valley QLD 4006	<b>Adelaide</b> Tel. 08 8443 2222 Ground Floor 70 Hindmarsh Square Adelaide SA 5000		

Follow Us



The product images in our brochures give a general indication of colour for your preliminary selection.  
We also recommend you view current product samples before making your final selections.



Visit. [urbanstone.com.au](http://urbanstone.com.au)

Call. 1800 872 267

A BRAND OF

**BRICKWORKS**

