

A LEGACY IN BRICK



2019 Brick Collection

04 A LEGACY IN BRICK
06 UNIQUE CHARACTER AND STYLE
08 CARBON NEUTRAL BRICKS
10 DESIGNED TO LAST
12 CRAFTED CLAY BRICK COLLECTION
16 CASE STUDIES
20 MORTEX
21 PRODUCT INFORMATION
22 STYLE INSPIRATION
24 HOME OF DESIGN
26 BEAUTIFUL PRODUCTS
THAT LAST FOREVER



PRODUCT: HAWTHORN, LONDON | ARCHITECT: MATYAS ARCHITECTS | PHOTOGRAPHER: TATJANA PLITT



A LEGACY IN BRICK

The story of Daniel Robertson begins in 1853 when John Robertson imported Welsh roofing slates as ballast in sailing ships into Melbourne.

He was soon providing all forms of roofing, including terracotta tiles, across his newly adopted hometown and in 1910 the company commenced its first manufacturing venture producing concrete roof tiles in Whiteman Street, South Melbourne.

To this day, many of Melbourne's most notable buildings still feature those original, Daniel Robertson roofs. But it wasn't until 1928 that the company sealed its reputation for quality craftsmanship after acquiring Tunstall Brickworks in Nunawading and converting it for the production of terracotta tiles.

The transition to red clay products proved extremely successful and business grew rapidly. By 1967 the company was a leader in the field, researching and developing new colours, shapes and textures.

In that same year, it launched a unique range of rustic bricks as an alternative to the smooth-faced options only available at the time.

They were an instant hit.

Demand for this new product soon became so great that roof tile production was phased out within two years to focus on manufacturing bricks.

In 2012 Australia's largest building products manufacturer Brickworks Building Products group acquired the company. Under this well respected banner, Daniel Robertson continues to deliver excellence and innovation in architectural brickwork.

There are simply no better premium quality bricks available today.

UNIQUE CHARACTER AND STYLE

In a world of mass production, these crafted clay bricks are highly valued for their unique character, earthy appeal and individual charm. Developed through years of tradition, they are kiln fired to produce bricks which have distinctive colour and textural variations.

PRODUCT: HAWTHORN 50, LONDON | ARCHITECT: K2LD ARCHITECTURE | PHOTOGRAPHER: AARON POCOCK



SUSTAINABLE AND CARBON NEUTRAL

Daniel Robertson bricks made in Tasmania have achieved the enviable goal of Carbon Neutral certification under the Australian Government's National Carbon Offset Standard. This feat has been largely achieved by using sawdust as the main firing fuel for our kilns at our Longford plant. Thermal mass, energy-efficient design, reusability, and the fact that bricks do not require resource-hungry finishes such as paint or render to maintain their good looks and durability, all add to our sustainability credentials.

PRODUCT: HAWTHORN 470, OXFORD



Making a real *difference*



DESIGNED TO LAST

Versatile in design, durability to last a lifetime, the highest thermal comfort and with low maintenance upkeep, clay bricks tick all the boxes for homes and projects with value and sustainability in mind.

LOW MAINTENANCE

No need to paint or other treatments to maintain their aesthetics and durability. They are strong, reliable and relatively maintenance free.

STRENGTH AND SAFETY

Clay products are stronger than other light weight materials and also provide a safer and more secure home from the outside environment.

AFFORDABLE

Cost effective building product materials that increase the value of your investment or project from day one, for generations to come.

SUSTAINABLE

Clay is a natural resource which has been used for centuries because it retains its colour forever as well as its durability. Architects, engineers and specifiers continue to appreciate the advantages of using clay products.

ENERGY EFFICIENT

Combined with intelligent passive building design elements, clay bricks can help moderate building temperatures and reduce energy consumption.



peace of mind guaranteed

Daniel Robertson bricks are backed by an exclusive Brickworks 100 year warranty.

PRODUCT: HAWTHORN, LONDON | ARCHITECT: MATYAS ARCHITECTS | PHOTOGRAPHER: TANJANA PLITT

DANIEL ROBERTSON CRAFTED CLAY BRICK COLLECTION

TRADITIONAL

Daniel Robertson and its range of clay bricks are still as popular today as they were 50 years ago when the company was first established. With their highly textured face and complex multi layered colouring, the unique attributes of the Traditional premium bricks offer real individuality and distinction.

The discerning architect, premium builder and sophisticated homeowner will appreciate their authentic, individual appearance.

FEATURED: RED

TRADITIONAL 50

This clay brick has all the rustic charm of the standard Traditional, but with a modern, sleek format. The slimline bricks in the 50 series make them ideal for feature wall applications or projects that call for a contemporary aesthetic and feel. Generations of brickmaking have refined its crafting and like the standard Traditional format all colours are classified carbon neutral.

FEATURED: APRICOT

HAWTHORN

This range echoes the iconic Hawthorn brick that gives so many of Melbourne's historic inner city homes their distinct character. The Hawthorn range captures red, tan and brown base clay colours, and are further highlighted with dark and strong blue char and black frit, giving them a rich historic ambience. When combined with Daniel Robertson's heavy textured face, the result is that no two clay bricks are the same, lending it a truly unique, handmade aesthetic.

FEATURED: TAN

HAWTHORN 50

This clay brick features the heavily textured face of the Hawthorn in a slim yet elegant profile. Its compact and thoroughly modern appearance makes it ideal for feature wall applications or projects that call for a distinctly contemporary look.

FEATURED: LONDON

HAWTHORN 470

The Hawthorn 470 mm brick creates a whole new look for clay masonry walls, leaving behind the conventional modularity of brickwork. Bricks and mortar joints work together to create fine, elegant horizontal lines in the overall wall. The effect is a fine nuanced pattern in the best tradition of brickmaking and bricklaying. From bold to the gentlest of hues, the possibilities for Specialty colours are endless when you create your own custom colours.

FEATURED: OXFORD

HAWTHORN

*Classified carbon neutral



Red* GP ● Tan* GP ● Black* GP ● Cambridge* GP ● Oxford GP ●



Surrey GP ● London* GP ●

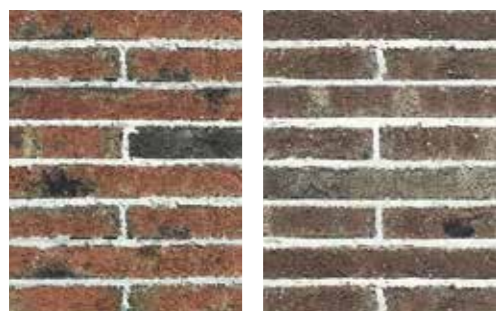
HAWTHORN 50

*Classified carbon neutral



Red* GP ● Tan* GP ● Black* GP ● Cambridge* GP ● London* GP ●

HAWTHORN 470

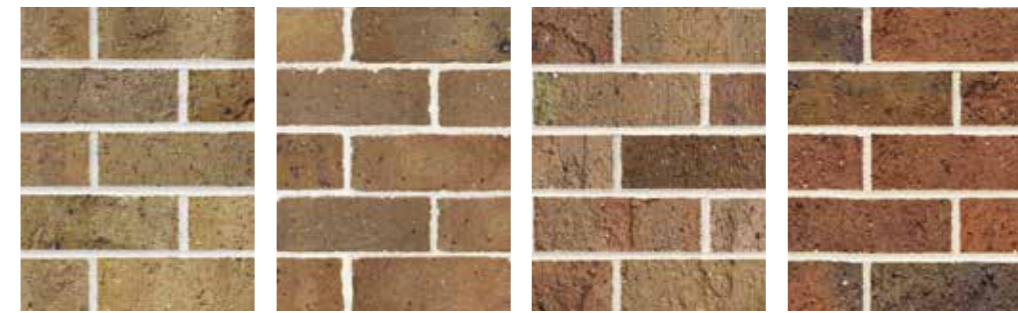


Oxford** GP ● Surrey** GP ●

**Made to order

TRADITIONAL

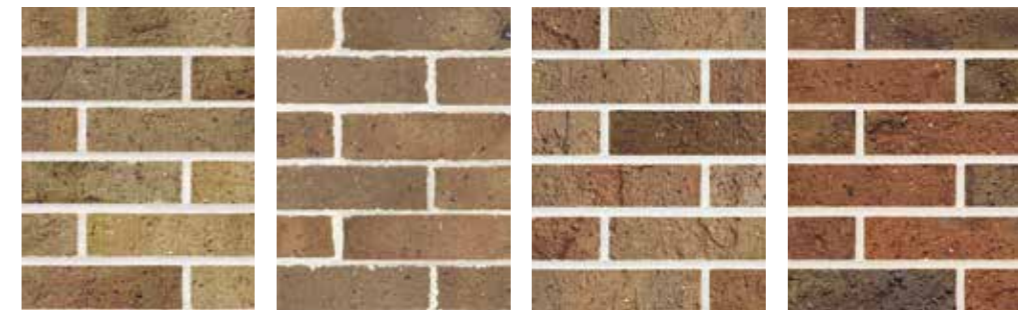
*Classified carbon neutral



Buff* GP ● Dulwich Grey* GP ● Apricot* GP ● Red* GP ●

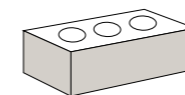
TRADITIONAL 50

*Classified carbon neutral

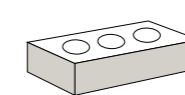


Buff* GP ● Dulwich Grey* GP ● Apricot* GP ● Red* GP ●

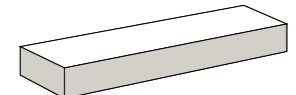
SIZING



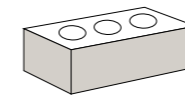
Hawthorn
230 L x 110 W x 76 H mm



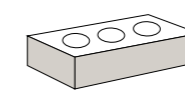
Hawthorn 50
230 L x 110 W x 50 H mm



Hawthorn 470
470 L x 110 W x 50 H mm



Traditional
230 L x 110 W x 76 H mm



Traditional 50
230 L x 110 W x 50 H mm



PRODUCT: TRADITIONAL50, RED | ARCHITECT: MATT GIBSON ARCHITECTURE + DESIGN | PHOTOGRAPHER: SHANNON MCGRATH



PRODUCT: HAWTHORN 50, LONDON | BUILDER: BD PROJECTS | PHOTOGRAPHER: JOHN GOLLINGS



MORTEX

Mortar colour and mortar finishes

MORTEX is a factory manufactured, quality assured premixed M4 rated mortar solution. Its consistency can save labour time, increase efficiency, remove the need for on site blending, and it is compliant with AS3700:2018. MORTEX takes the guess work out of mortar blending and reduces the potential for under strength, non compliant mortar use.

This can ultimately reduce potential liabilities, saving money and time on rectifications. With the adoption of ISO9001:2008 principles, the mortar constituents are accurately measured and blended in a controlled environment to ensure consistent, homogeneous mortar is produced on-site.

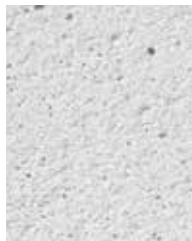
MORTAR COLOURS

White mortar is currently the most popular colour. This is made by mixing light coloured cement and white sand and results in a traditional brick and mortar look. Mortar can be coloured by adding powdered or liquid pigments to the mortar as it is being mixed by the bricklayer. It can also be tinted to

match the brick colour, giving a very even wall colour. Please confirm with your bricklayer what their mortar colouring offering is before making your final decision.

For more information on MORTEX please contact us on 13-Brick (13-2742).

STANDARD



MORTEX White



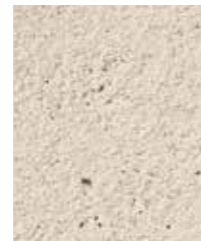
MORTEX (Grey)



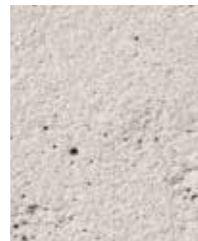
MORTEX Charcoal

Please refer to the MORTEX Charcoal Technical Data Sheet for installation and cleaning guidelines before use.

CUSTOM



Limestone



Pebble



Bark



Pewter



Nickel



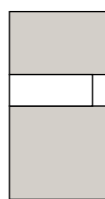
Oak



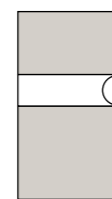
Gumnut

MORTAR FINISHES

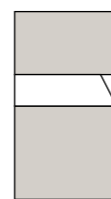
There are four common mortar finishes and these various finishes result in different shadow lines on the wall. A raked finish will create a deep shadow in the mortar joint. This brings out the horizontal lines of the brickwork (and the vertical lines to a lesser extent) and it is the most common finish. Ironed and struck joints also create shadow lines, but these are much finer and more subtle. A flush joint doesn't allow shadow lines to form at all, giving the wall a flatter, more unified look. Using a mortar colour to match the brick will take this a step further.



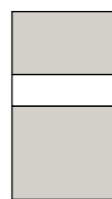
Raked



Ironed



Struck



Flush

PRODUCT INFORMATION

Collection	Range	Colour	Durability Class	Solar Rating	Colour Group	Colour Scheme	Size	Carbon Neutral
DANIEL ROBERTSON	TRADITIONAL	Apricot	GP	M	Tan	Bisque	230mm x 110mm x 76mm, 230mm x 110mm x 50mm	Yes*
		Buff	GP	M	Tan	Bisque	230mm x 110mm x 76mm, 230mm x 110mm x 50mm	Yes*
		Dulwich Grey	GP	D	Tan	Bisque	230mm x 110mm x 76mm, 230mm x 110mm x 50mm	Yes*
		Red	GP	D	Red	Rouge	230mm x 110mm x 76mm, 230mm x 110mm x 50mm	Yes*
	HAWTHORN	Black	GP	D	Brown	Sienna	230mm x 10mm x 76mm, 230mm x 110mm x 50mm	Yes*
		Cambridge	GP	D	Tan	Bisque	230mm x 110mm x 76mm, 230mm x 110mm x 50mm	Yes*
		London	GP	D	Blackish	Raven	230mm x 110mm x 76mm, 230mm x 110mm x 50mm	Yes*
		Oxford	GP	D	Red	Rouge	230mm x 110mm x 76mm, 470mm x 110mm x 50mm	Yes*
		Red	GP	D	Red	Rouge	230mm x 110mm x 76mm, 230mm x 110mm x 50mm	Yes*
		Surrey	GP	D	Brown	Sienna	230mm x 110mm x 76mm, 470mm x 110mm x 50mm	Yes*
		Tan	GP	D	Brown	Crema	230mm x 110mm x 76mm, 230mm x 110mm x 50mm	Yes*

*When manufactured in Longford, Tasmania.

EXP = Exposure grade

Suitable for use in external walls exposed to aggressive environments, such as; areas subjected to salts in the soil, adjacent material or ground water, in coastal areas exposed to attack from windborne salt spray, or retaining walls subjected to fertilisers and ground salts.

GP = General purpose

Suitable for internal and external walls only when above a sheet or membrane damp-proof course and protected by an adequate coping, eaves, roof or similar top covering. These units should not be directly exposed to saline environments.

Solar absorptance rating

In the design of energy efficient buildings, the architects and consulting engineers need to be able to calculate the heat loss or gain of materials used to construct these buildings.

For this reason, our product range has been categorised into three colour groups

- Light (L)** < 0.475
- Medium (M)** 0.475 - 0.70
- Dark (D)** > 0.70

to assist architects and consulting engineers with their calculations.

STYLE INSPIRATION

DANIEL ROBERTSON HAVE THE INSPIRATION AND EXPERTISE YOU NEED

With our comprehensive series of colour and style palettes, skillfully curated from the huge range of Brickworks building materials available, you can select a thoughtful and stylish scheme for any house, whether it's cutting edge contemporary or more traditionally influenced.

Just as important, clay is a natural resource which has been used for centuries because it retains its colour forever as well as its durability.

Our expert design consultants can talk you through colour and style swatches in a friendly one-to-one session, helping you pick a scheme you love for your vision.

BOOK YOUR ONE-ON-ONE *colour consultation* TODAY

For more style inspiration or to book an appointment, please visit our website:
danielrobertson.com.au



HOME OF DESIGN

Colour selections and design ideas
at the Brickworks Design Studios

Come and visit us at your local Brickworks Design Studio and have one of our experienced consultants assist in designing your ultimate sanctuary. Our extensive and innovative range of building solutions will ensure your experience is a unique one and that you're getting the most out of our vast range of products. With the assistance of our current colour trend palette selections, we will also help make the process of selecting your colours and textures a stress-free and enjoyable experience, no matter whether you're inspired by cutting edge trends or classic heritage style.

Book an appointment with one of our colour consultants today, and let us help you create the style and innovation for your way of life.

brickworksbuildingproducts.com.au/booking



BEAUTIFUL PRODUCTS *that last forever*

PRODUCT: TRADITIONAL 50, RED | ARCHITECT: MAT FIBSON ARCHITECTURE + DESIGN | PHOTOGRAPHER: SHANNON MCGRAW

Our genuine building products create the most beautiful and sustainable environments and places in Australia.

Brickworks Building Products is one of Australia's largest and most diverse building material producers and providers. With our heritage as one of Australia's founding brick businesses many generations ago, we hold the values of family, community, sustainability, innovation and quality at our core. We know our quality products last forever, which is why some of our products come with a 100 year guarantee.

Under the Brickworks Building Products umbrella are some of Australia's best known building materials brands. Our products include bricks, pavers, masonry blocks, retaining wall systems, precast concrete panels, solar, concrete and terracotta roof tiles, timber products, terracotta façades and specialised building systems.

With a broad product portfolio of leading products from Australia and around the world – available right across the country – Brickworks Building Products pride ourselves on our commitment to product, service excellence and our leadership position.

we are BRICKWORKS

BRICKWORKS
— BUILDING PRODUCTS —

Australia

australbricks

australmasonry

australprecast

auswesttimbers

bristiler roofing

southern cross cement

BOWRAL BRICKS

DANIEL ROBERTSON

nubrik

terraCADE
TERRACOTTA FAÇADE SYSTEMS

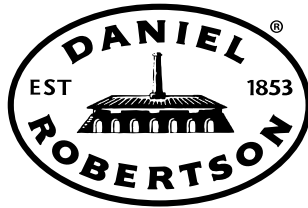
Pronto Panel™

GB Masonry

URBANSTONE

North America

Glen-Gery



danielrobertson.com.au | 13 brick

Design Studios

Sydney

2 Barrack Street,
Sydney
NSW 2000

Melbourne

Ground Floor
367 Collins Street,
Melbourne
VIC 3000

Brisbane

27 James Street,
Fortitude Valley
QLD 4006

Adelaide

Ground Floor,
70 Hindmarsh
Square, Adelaide
SA 5000

Perth

67 King Street,
Perth
WA 6000

Hobart

9 Franklin Wharf,
Hobart
TAS 7000

Proud Supporters



A brand of

BRICKWORKS
— BUILDING PRODUCTS —

The product images in our brochures give a general indication of colour for your preliminary selection.
We also recommend you view current product samples before making your final selections.