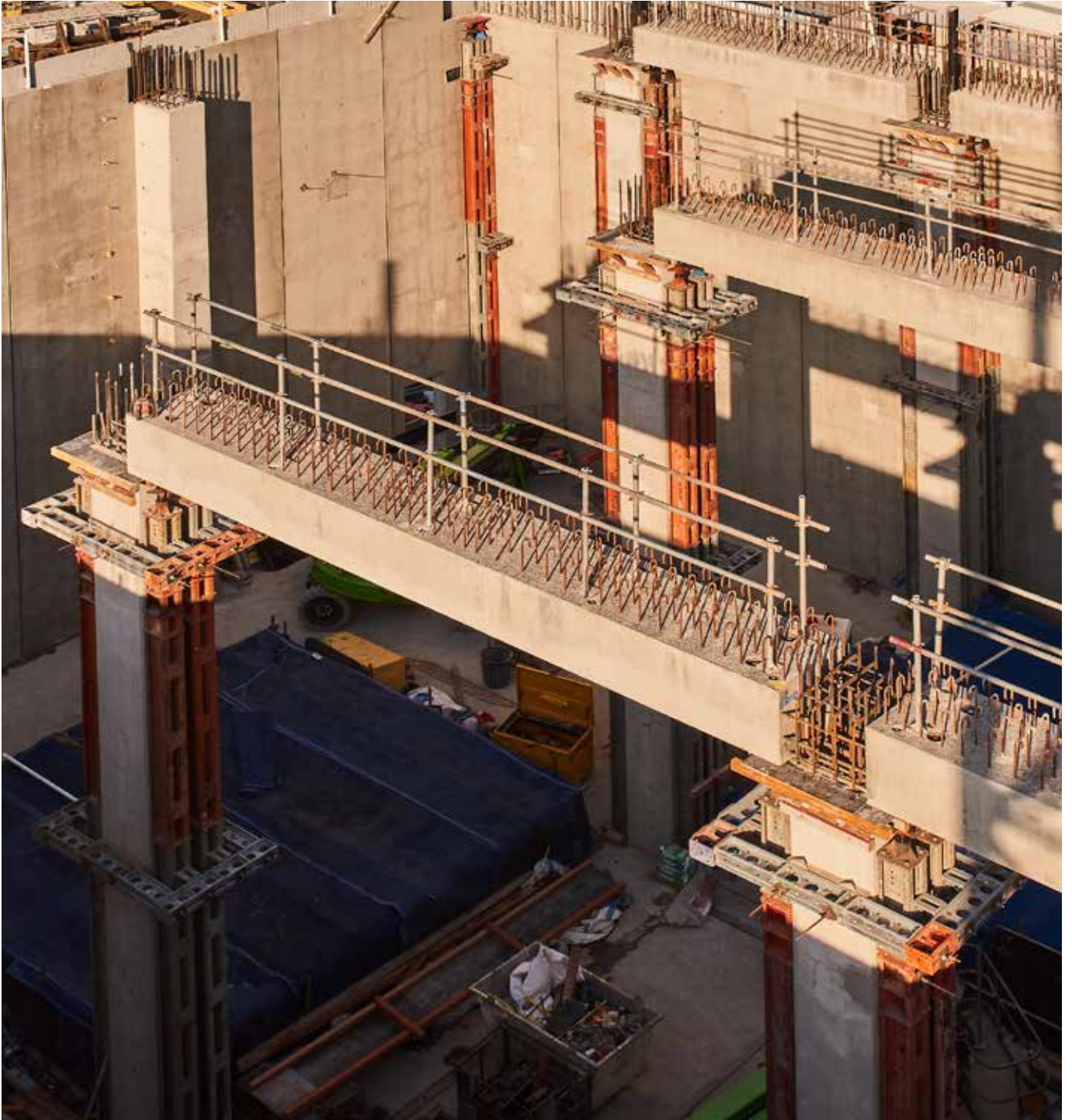
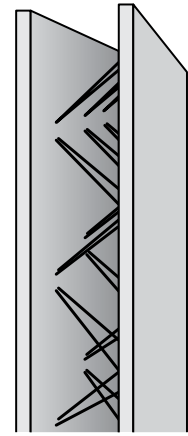


DOUBLE WALL COLUMNS

build faster. build smarter. build better.



WHY CHOOSE AUSTRAL PRECAST DOUBLE WALL COLUMNS



Austral Precast Double Wall Column consists of a pair of precast reinforced concrete shells connected by reinforcement, forming a cavity that is core filled on site.

Once installed on site, panel to panel reinforcing is inserted and the cavity is filled with self-compacting ready-mix concrete. When filled Austral Precast Double Wall Column behaves like a fully cast in situ reinforced concrete column.



Speed and simplicity on site.



Lifting by hooks (no clutches required).



High quality class 2 surface finish.



High performing and efficient permanent formwork solution.



Quality and efficiency advantages of precast manufacturing.



Non-flammable or combustible.



Safer construction method.



Direct replacement for traditional in-situ columns.



Complete workshop drawings provided for Engineer/Client approval.



ISO 9001:2015 compliant full factory Quality Assurance documentation provided.

SIMPLE INSTALLATION

Step 1

Prepare footing with starter bars.

Step 2

Install packers.

Step 3

Install panels into position and brace temporarily.

Step 4

Install stop ends and base form.

Step 5

Pour core-fill.

Step 6

Remove braces (as per instruction from structural engineer).

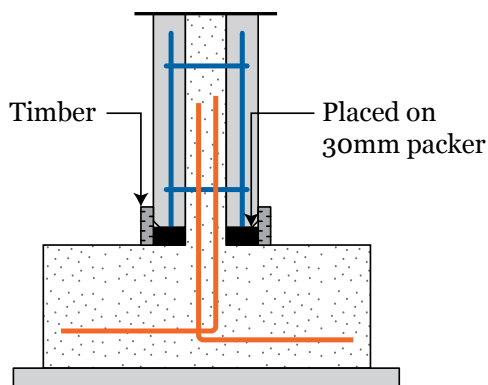
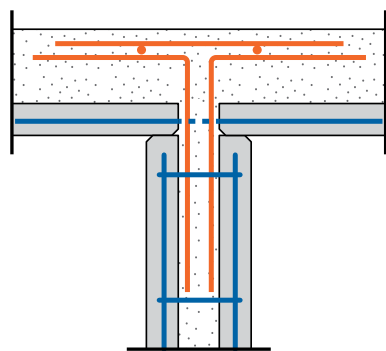
Double Wall Column Specification			
	Panel Width (m)		
Panel Type	Standard Column	Custom Column	Standard Double Wall Panel
Panel Height (m)	2.5m -> 3.5m	3.5m -> 6.0m	Up to 3.5m x 12.0m
Panel Width (m)	1.0m -> 2.4m	2.4m -> 3.5m	
Column Thickness (mm)	200, 220, 250, 300, 350, 400mm		
Reinforcement Arrangement	Cage	Bar Mat with Girders. U-Bars and Ties	
Reinforcement Rates (kg/m ³)	Up to 300kg/m ³	Up to 50kg/m ² (250kg/m ³ @ 200mm thick => 125kg/m ³ @ 400mm thick)	
Delivery	Flat	A-Frame	

Customised sizes available: discuss with Austral Precast. Confirm all weights with Austral Precast prior to order.

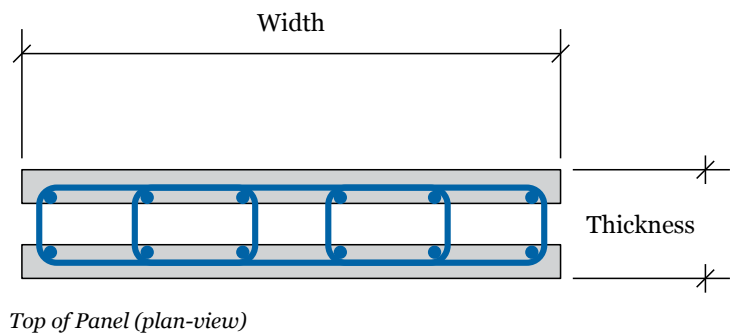


<i>Double Wall Standard Columns Typical Mass</i>						
Approximate Panel Mass (tonnes)						
	Panel Width (m)					
Panel Height (m)	1.0	1.2	1.5	1.8	2.0	2.4
2.5	0.94	1.13	1.41	1.69	1.88	2.25
2.6	0.98	1.17	1.46	1.76	1.95	2.34
2.7	1.01	1.22	1.52	1.82	2.03	2.43
2.8	1.05	1.26	1.58	1.89	2.10	2.52
2.9	1.09	1.31	1.63	1.96	2.18	2.61
3.0	1.13	1.35	1.69	2.03	2.25	2.70
3.1	1.16	1.40	1.74	2.09	2.33	2.79
3.2	1.20	1.44	1.80	2.16	2.40	2.88
3.3	1.24	1.49	1.86	2.23	2.48	2.97
3.4	1.28	1.53	1.91	2.30	2.55	3.06
3.5	1.31	1.58	1.97	2.36	2.63	3.15

TYPICAL COLUMN DETAILS



End of Panel (end-view)



Top of Panel (plan-view)

Connecting reinforcement to be placed before pouring. See structural engineer.

Note: Connecting reinforcement supplied by others.



E: doublewall@australprecast.com.au | 1300 778 668



OFFICE LOCATIONS

Wetherill Park NSW

33-41 Cowpasture Road
Wetherill Park NSW 2164

Salisbury QLD

364 Fairlie Terrace
Salisbury QLD 4107

Maddington WA

12 Wildfire Road
Maddington WA 6109

A brand of

BRICKWORKS
— BUILDING PRODUCTS —

Proud Supporters

