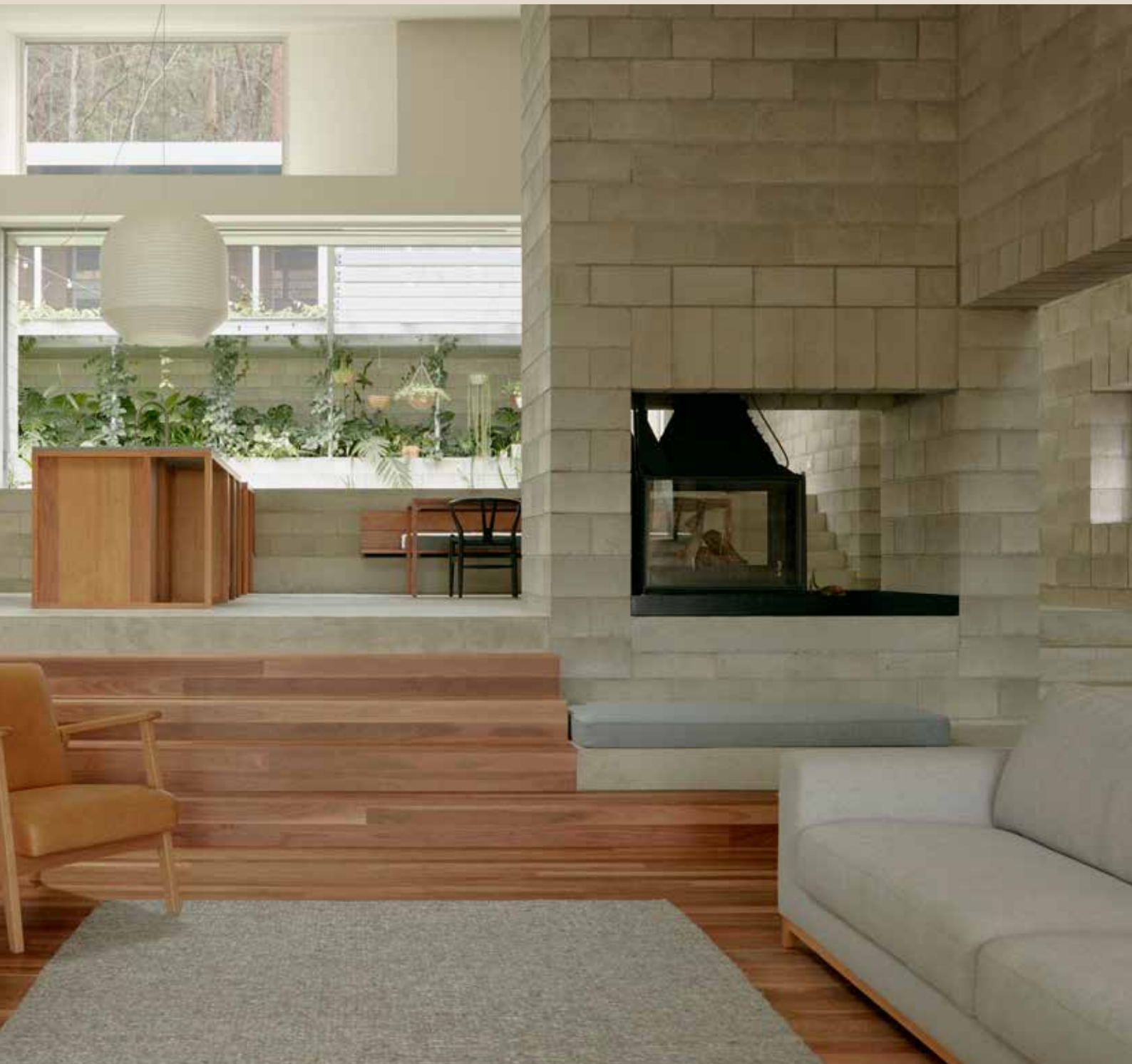


# Grey Blocks

Northern New South Wales



What’s inside

- 1 – Our Collection p<sup>02</sup>
- 2 – Grey Blocks p<sup>04</sup>
  - 100 Series p<sup>04</sup>
  - 150 Series p<sup>05</sup>
  - 200 Series p<sup>06</sup>
  - 300 Series p<sup>07</sup>
- 7 – Block and Brick Estimator p<sup>36</sup>
- 8 – Get in Touch p<sup>46</sup>

Cover Image:  
Product – Grey Blocks  
Architect – Nielsen Jenkins  
Photographer – Tom Ross

A BRAND OF  
**BRICKWORKS**

Grey Blocks



Product – Grey Blocks  
Architect – Nielsen Jenkins  
Photographer – Tom Ross



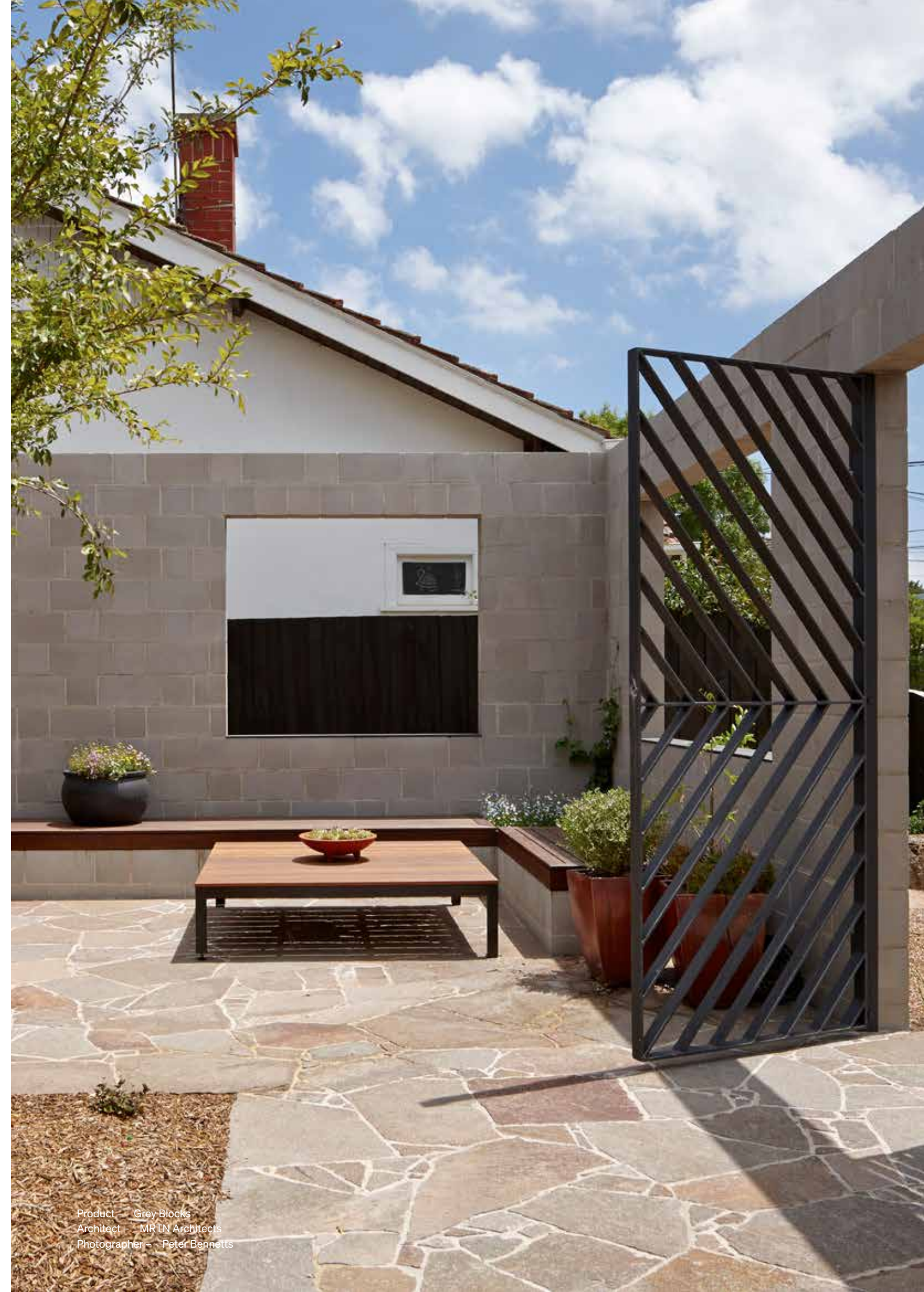
# Austral Masonry Grey Blocks

Austral Masonry manufactures a range of grey masonry blocks that comply with the requirements of the Australian Standard AS/NZS4455.1:2008 tested under AS4456:2013.

The range has been designed as all-purpose units to meet a range of masonry site requirements. These masonry units are not only lightweight and load-bearing but also achieve high fire rating and sound insulation.

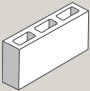
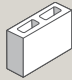
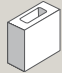

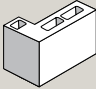
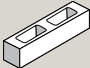
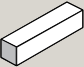
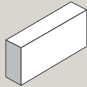
## Range

- 100 series
- 150 series
- 200 series
- 300 series
- Commons

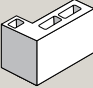


Product – Grey Blocks  
Architect – MRTN Architects  
Photographer – Peter Bennetts

100 Series  
Grey Blocks

	Product	Size (mm)	Weight	Units per pallet	f <sub>uc</sub> (MPa)	Insulation FRL
	10.01 Full Hollow	390L x 90W x 190H	8.7kg	180	>15	120
	10.02 (30.04) Three Quarter	290L x 90W x 190H	8.2kg	240	>15	120
	10.03 (20.04) Half	190L x 90W x 190H	4.8kg	360	>15	120
	10.04 Quarter Solid	90L x 90W x 190H	2.8kg	720	>15	120
	10.25 Corner	390L x 190W x 190H	12.3kg	120	>15	120
	10.71 Half Height	390L x 90W x 90H	4.8kg	360	>15	120
	10.83 Half Height Solid	390L x 90W x 90H	6.0kg	288	>15	120
	10.31 Solid	390L x 90W x 190H	12.2kg	144	>10	120

150 Series  
Grey Blocks

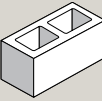
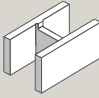
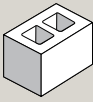
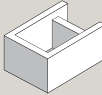
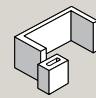
	Product	Size (mm)	Weight	Units per pallet	f <sub>uc</sub> (MPa)	Insulation FRL
	15.01 Full	390L x 140W x 190H	11.23kg	144	15	120
	15.03 Half	190L x 140W x 190H	5.7kg	240	15	120
	15.12 Lintel or Bond Beam	390Lx 140W x 190H	16.8kg	120	15	120
	15.25 Corner	390L x 190W x 190H	16.1kg	105	15	120
	15.83 Half Height Solid	390L x 140W x 90H	9.2kg	192	15	120
	15.71 Half Height	390L x 140W x 90H	5.7kg	288	15	120
	15.42 Recessed Web	340L x 140W x 190H	10.8kg	144	15	120
	15.48 H Block	390L x 140W x 190H	10.8kg	144	15	120
	15.709* 4 Hour Insulated FRL	390L x 140W x 190H	18.6kg	144	10	240

\*Made to Order

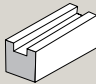
200 Series  
Grey Blocks

	Product	Size (mm)	Weight	Units per pallet	f <sub>uc</sub> (MPa)	Insulation FRL
	20.01 Full	390L x 190W x 190H	13.3kg	126	15	120
	20.02 Three Quarter	290L x 190W x 190H	11.8kg	144	15	120
	20.03 Half	190L x 190W x 190H	7.52kg	180	15	120
	20.12 Lintel or Bond Beam	390L x 190W x 190H	18.2kg	90	15	180
	20.71 Half Height Hollow	390L x 190W x 90H	7.3kg	180	15	120
	50.31 190 Capper	390L x 190W x 40H	5.2kg	288	-	-
	20.05 4 Hour Insulation FRL	390L x 190W x 190H	16.4kg	108	10	240
	20.42 Recessed Web	390L x 190W x 190H	12.5kg	126	15	120
	20.91 Stretcher	390L x 190W x 190H	11.0kg	126	15	120
	20.48 'H' Block	390L x 190W x 190H	11.2kg	126	15	120
	20.92 Corner & End	390L x 190W x 190H	11.8kg	126	15	180
	20.96 Clean Out	390L x 190W x 190H	10.8kg	108	15	120

300 Series  
Grey Blocks

	Product	Size (mm)	Weight	Units per pallet	f <sub>uc</sub> (MPa)	Insulation FRL
	30.01 Full	390L x 290W x 190H	19.4kg	84	15	120
	30.48 'H' Block	390L x 290W x 190H	15.4kg	84	15	120
	20.02 Half	190L x 290W x 190H	11.8kg	144	15	120
	30.92 End	390L x 290W x 190H	17.5kg	84	15	120
	30.45 Clean Out	390L x 290W x 190H	14.9kg	72	15	120

Concrete Commons  
Grey Blocks

	Product	Size (mm)	Weight	Units per pallet	f <sub>uc</sub> (MPa)	Insulation FRL
	Common	230L x 110W x 76H	3.5kg	500	12	180



# Block and brick estimator

### Material Quantities for 1m of Mortar

- For every 800 full height blocks (390 long x 190 high) or 64m² of wall, approximately 1m³ of mortar mix is required, allowing for wastage.
- There are 12.5 full blocks per square metre of wall surface area.

### Mortex Preblended Mortar

1 x 20kg bag will cover 10-12 x 100 and 200 Series Full Height Blocks.

### M3 General Purpose Mortar

Mix in 1 : 1 : 6 proportions

Cement	10 bags (20kg)
Lime	5 bags (20kg each)
Sand	1.0m³ (1.4t)

### M4 Masonry Block

Mix in 1 : 0.5 : 4.5 proportions

Cement	13 bags (20kg each)
Lime	3 bags (20kg each)
Sand	1.0m³ (1.4t)

### Grout for Core Filling

The correct grout specification (mix design) is critical to achieving the structural design of a reinforced wall. The grout used to fill the cores of blockwork walls should be specified as follow:

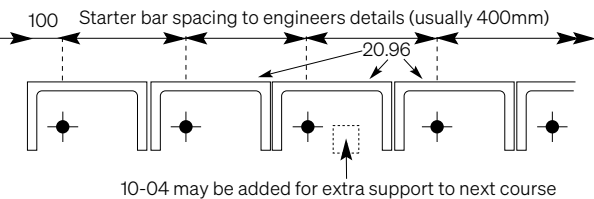
- Grout to comply with AS3700 Clause 10.7 Part 11.7.
- Characteristic Compressive Strength minimum 20MPa.
- Where grout is to provide protection to reinforcement, cement content shall be not less than 300kg/m³.
- Round aggregate (if any) not more than 10mm.
- Clean sand (1.2m³)
- A pouring consistency which ensures that the cores are completely filled and the reinforcement completely surrounded without segregation of the constituents.

### Control Joints

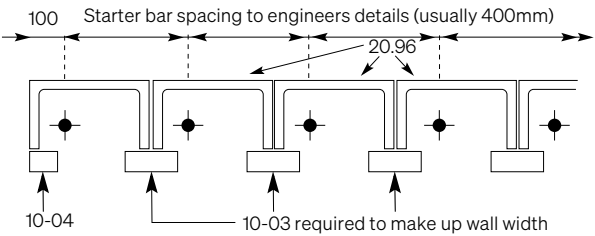
Because of temperature variations and the shrinkage in a concrete masonry wall after construction, it is necessary to provide control joints in blockwork at a max spacing of 6m and at points of potential cracking, e.g. beside openings and at large steps in wall or footing.

- Joint width is 10mm for panels up to 6000mm long.
- Joint sealants should be applied towards the end of construction to minimise the effect of panel movement.

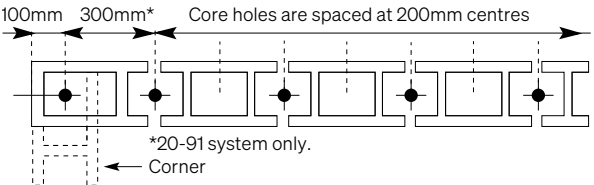
### 20.42 and 20.48 Clean Out Course and Starter Bar Spacing



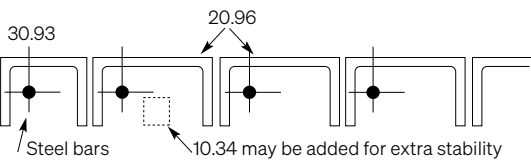
### 30.48 Clean Out Course and Starter Bar Spacing



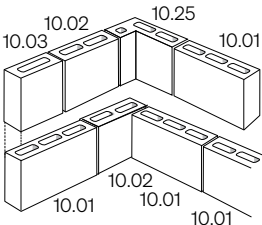
### Core Spaces at end and corners



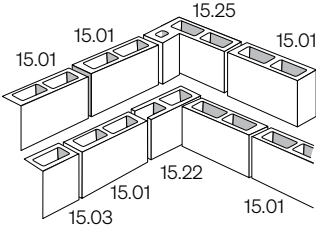
### Clean Out Course



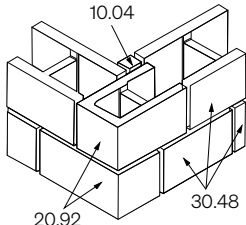
### Corner Details 100 Series



### Corner Details 150 Series



### Corner Details 300 Series



# Mortex Preblended Mortar

Mortex is a factory manufactured, quality assured premixed M4 rated mortar solution. Its consistency can save labour time, increase efficiency, remove the need for on site blending, and it is compliant with AS3700:2018. Mortex takes the guess work out of mortar blending and reduces the potential for under strength, non compliant mortar use.

This can ultimately reduce potential liabilities, saving money and time on rectifications. With the adoption of ISO9001:2008 principles, the mortar constituents are accurately measured and blended in a controlled environment to ensure consistent, homogeneous mortar is produced on-site.

### Colours

White mortar is currently the most popular colour. This is made by mixing light coloured cement and white sand and results in a traditional brick and mortar look. Mortar can be coloured by adding powdered or liquid pigments to the mortar as it is being mixed by the blocklayer. It can also be tinted to match the brick colour, giving a very even wall colour.

Please confirm with your blocklayer what their mortar colouring offering is before making your final decision.



MORTEX White



MORTEX Grey



MORTEX Charcoal

Please refer to the MORTEX Charcoal Technical Data Sheet for installation and cleaning guidelines before use.



Product – Grey Blocks  
Architect – Nielsen Jenkins  
Photographer – Tom Ross



# Efflorescence

Efflorescence is the formation of salt deposits, usually white, on or near the surface of concrete causing a change in appearance. Apart from the discolouration, efflorescence is generally harmless.

Austral Masonry recommends the use of sealers and AUS-LOC mortar additive to help combat efflorescence.

Sealers are applied to the blocks after installation and help to prevent water entering the masonry, dissolving salts and then drawing them to the block face. Please contact your local Austral Masonry representative for recommended sealers.

AUS-LOC mortar additive is recommended as a water repellent admixture for cement/sand mortar designed specifically for laying concrete blocks.

It may also be used as a water resistant admixture for other cement/sand mixtures such as cement/sand renders or concrete masonry.

## Please note

The supply of raw materials can vary over time and as a consequence colour and finish variation can occur between product types and production batches. To see indicative samples before placing an order please contact your local Austral Masonry office.

Some of the important features of AUS-LOC include:

- Non-toxic water-based formulation.
- Improves workability of cement/sand mortars.
- Increased adhesion of cement/sand mortar.
- Reduces water penetration, efflorescence and water-borne staining.
- Does not significantly change vapour permeability of cement/sand mortars.
- Easy to use and cost effective.







## Need more information?

Please contact your Austral Masonry representative or visit our Design Centres

## Ideas for Inspiration

Whatever your ideas, we have the products to turn them into reality.



### Coloured Masonry Blocks and Breeze Blocks

Our extensive range of architectural masonry products are available in a range of sizes, formats, and finishes from Austral Masonry and GB Masonry.



### Grey Masonry Blocks

Austral Masonry offer an extensive range of sizes and formats with light weight options available in selected locations.



### Retaining Walls

Choose from concrete retaining wall blocks or concrete sleepers suitable for DIY, general landscaping or large scale commercial retaining wall applications.



### Engineered Pavers

Offered exclusively from UrbanStone, the engineered range of pavers are the pinnacle in quality and style.



### Natural Stone

Granite, Marble and Limestone flooring, and natural stone wall cladding are style solutions created by nature and perfected by UrbanStone.



### Porcelain Stoneware\*

Created in Italy by Keope Ceramiche, our porcelain stoneware collection is the epitome of style, designed to suit indoor and outdoor applications.



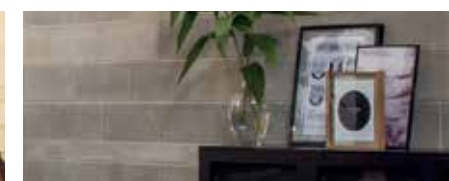
### Concrete Pavers

For commercial and residential applications, our range includes a collection of sizes, textures and a plethora of colours.



### Limestone Blocks\*

The engineered limestone and natural limestone block range is sourced through quarries in Western Australia with two finishes available to complement the natural limestone colour.



### Preblended Mortar and Accessories

From Mortex preblended mortar, to concrete sealers and mortar additives, Austral Masonry offers a host of installation accessories.



# Discover More

---



## Discover

---

**Brickworks Design Studios**  
Your local Brickworks design studio is a one-stop destination for advice and inspiration, and where you can experience the quality of our product range first-hand. Our experienced consultants will guide you through the range and help you find the best possible solution to your project – within your budget.

Call.  
1300 Masonry

## Create

---

**iVisualise Tools**  
Using Artificial Intelligence and digital technology, you're now able to experience colours, forms and profiles with our online colour visualisation tool. iVisualise helps make selection seamless and simple – whether you're looking for a more traditional product, or something more contemporary.

Visit.  
[australmasonry.com.au/ivisualise](http://australmasonry.com.au/ivisualise)

## Learn

---

**Colour Consultations**  
Building or renovating a home is a major investment – and it should be an enjoyable experience for you. We can help with a one-to-one colour consultation where our experts can guide you on colour trends, the right fit and style, and ideas that will give you a genuinely individual look.

Book.  
[brickworks.com.au/colour](http://brickworks.com.au/colour)





# Backed by Brickworks

Local expertise. Global quality. Brickworks Building Products are one of Australia’s biggest building material producers. With heritage going all the way back to one of Australia’s founding brick producers, we’re proud of our reputation for design, innovation and sustainability.

## BRICKWORKS




AUSTRALIA







NORTH AMERICA



EXCLUSIVE DISTRIBUTOR







# Get in Touch

For more information, advice and samples get in touch with the Austral Masonry team.

australmasonry.com.au  
1300 627 667

## Design Centres and Studios

**Coffs Harbour**  
Tel. 02 6690 6200  
27 Lawson Crescent  
Coffs Harbour NSW 2450

**Horsley Park**  
Tel. 02 9830 7777  
2 Latitude Road  
Horsley Park NSW 2175

**Albion Park**  
Tel. 02 4257 1566  
45 Princes Highway  
Albion Park NSW 2527

**Beresfield**  
Tel. 02 4944 6711  
2 Yangan Drive  
Beresfield NSW 2322

**Bowral**  
Tel. 02 4861 3031  
1 Kiama St  
Bowral NSW 2576

**Canberra**  
Tel. 02 6239 1286  
7 Lithgow Street  
Fyshwick ACT 2609

**Punchbowl**  
Tel. 02 9915 9100  
62 Belmore Road North  
Punchbowl NSW 2527

**Sydney**  
Tel. 02 9611 4200  
2 Barrack Street  
Sydney NSW 2000

## Follow Us





Visit. [australmasonry.com.au](http://australmasonry.com.au)

Call. 1300 Masonry

A BRAND OF

**BRICKWORKS**

