

Fire Pits

National Collection



What's inside

1 – Our Fire Pit Collection p⁰⁸

Heron p¹²

Hayman p¹⁶

Daydream p²⁰

Whitsunday p²⁴

Bribie p²⁸

Fire Pits



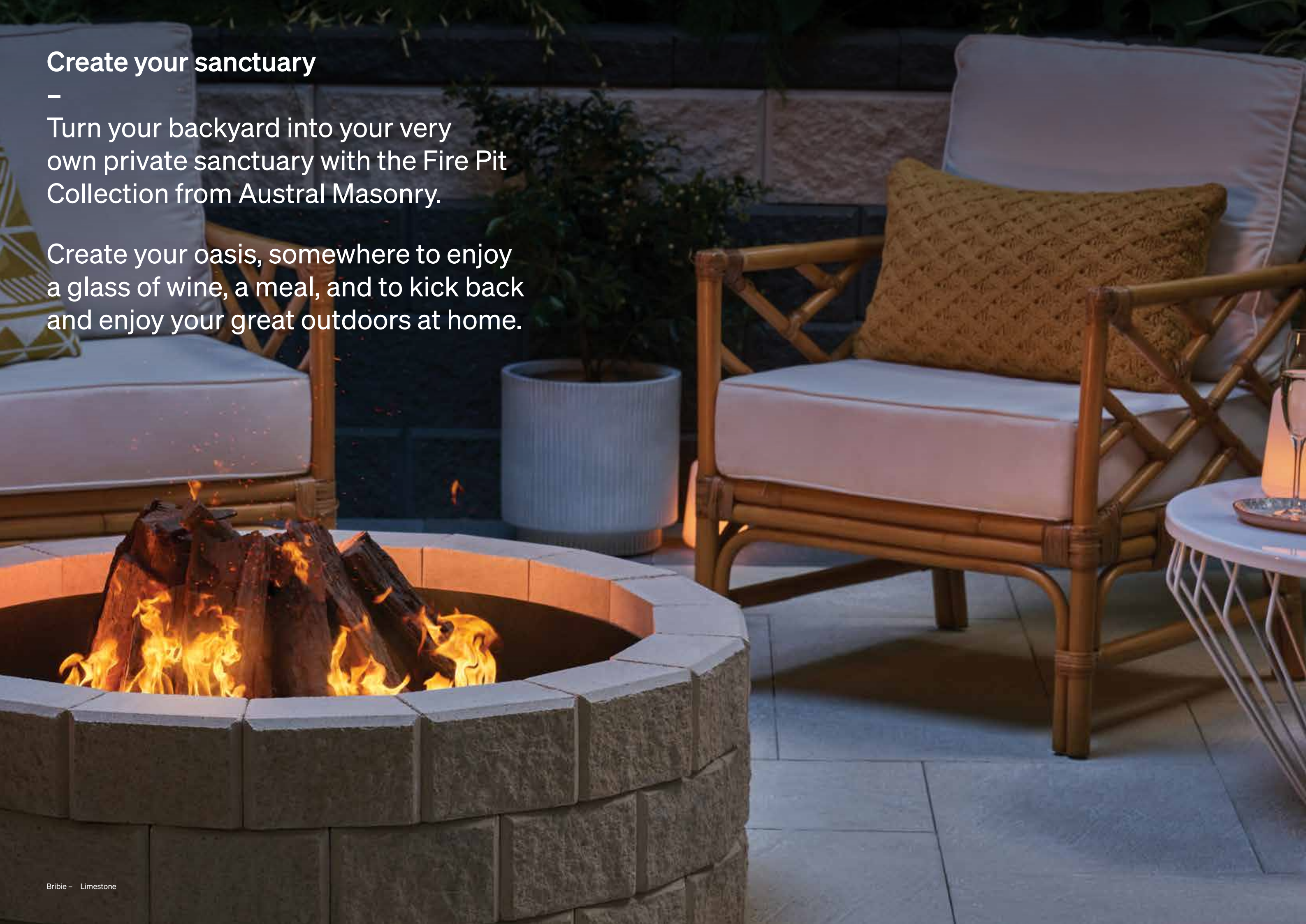
Hayman (Large) – Limestone

Create your sanctuary

—

Turn your backyard into your very own private sanctuary with the Fire Pit Collection from Austral Masonry.

Create your oasis, somewhere to enjoy a glass of wine, a meal, and to kick back and enjoy your great outdoors at home.





Designed to last

Not all landscaping products are the same. Our masonry range is designed to be simple to install, easy to maintain, with strength and durability to stand the test of time.

1.

Easy to install

Most of our retaining wall blocks feature a mortarless interlock which makes them fast and easy to install for fire pit applications.

2.

Low maintenance

Minimal maintenance, maximum impact. You're guaranteed a long-lasting, tough, and easy to care for solution.

3.

All-weather resistant

Heavy storms. Blistering heat. Sub-zero frosts. Our products are designed to hold up to anything our weather systems are capable of throwing at it.

4.

Fire resistant*

All of our products are non-combustible and highly fire resistant – making them ideal for fire pits applications.

5.

Affordable

For a premium product, our concrete masonry range offers an affordable option.

6.

Environmentally aware

We've designed our production processes to minimise effects on the environment ensuring they do not deplete precious natural resources.

7.

Impact resistance

Our masonry range is also renowned for its toughness and hard-wearing properties, and can handle impacts from many external forces.

The Fire Pits Collection

Our range is available in square or circular designs with different sizes and a collection of colours to suit your outdoor space.



Heron Small	p.12
Size	930L x 930W x 490H mm
Products required	8 x Standard Units 4 x Left Corner Units 4 x Right Corner Units 12 x Capping Units 1 x Metal Insert/Brazier *Sold Separately
Build difficulty	Medium



Heron Large	p.12
Size	1320L x 1280W x 490H mm
Products required	16 x Standard Units 4 x Left Corner Units 4 x Right Corner Units 16 x Capping Units 1 x Metal Insert/Brazier *Sold Separately
Build difficulty	Medium



Hayman Small	p.16
Size	930L x 930W x 490H mm
Products required	8 x Standard Units 8 x Universal Corner Units 12 x Capping Units 1 x Metal Insert/Brazier *Sold Separately
Build difficulty	Medium



Hayman Large	p.16
Size	1320L x 1280W x 490H mm
Products required	16 x Standard Units 8 x Universal Corner Units 16 x Capping Units 1 x Metal Insert/Brazier *Sold Separately
Build difficulty	Medium



Daydream*	p.20
Size	1200L x 1200W x 360H mm
Products required	30 x Standard Blocks 1 x Metal Insert/Brazier *Sold Separately
Build difficulty	Easy



Whitsunday*	p.24
Size	1200L x 1200W x 310H mm
Products required	20 x Standard Units 1 x Metal Insert/Brazier *Sold Separately
Build difficulty	Easy



Bribie¹	p.28
Size	1100L x 1100W x 360H mm
Products required	54 x Standard Units 1 x Metal Insert/Brazier *Sold Separately
Build difficulty	Easy

* Queensland exclusive
† North Queensland exclusive
^ New South Wales and Queensland exclusive
¹ East Coast exclusive

Fire Pits



- Heron
- Hayman
- Daydream
- Whitsunday
- Bribie

Heron range



Heron

Available in two sizes, the Heron fire pit range offers a natural rustic charm.



Heron Small

Size	930L x 930W x 490H mm
Products required	8 x Standard Units 4 x Left Corner Units 4 x Right Corner Units 12 x Capping Units 1 x Metal Insert/Brazier *Sold Separately
Build difficulty	Medium



Heron Large

Size	1320L x 1280W x 490H mm
Products required	16 x Standard Units 4 x Left Corner Units 4 x Right Corner Units 16 x Capping Units 1 x Metal Insert/Brazier *Sold Separately
Build difficulty	Medium

Colours



Limestone



Sandstone*



Brisbane Blend*



Sydney Blend*



Charcoal

* These colours are available in all states except Western Australia and South Australia

Components



Standard Unit

Size: 390L x 245W x 198H mm

Weight (each): 24kg

Face Area: 13 units per m²

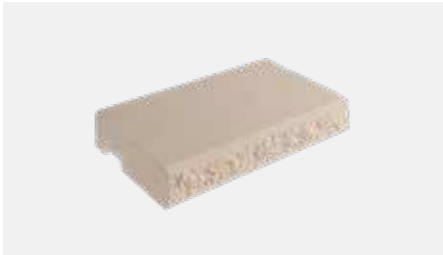


Corner Block

Size: 160L x 360W x 198H mm

Weight (each): 20kg

Available in right and left (right shown)



Capping Unit

Size: 390L x 245W x 90H mm

Weight (each): 16kg

Units per lineal metre: 2.56

Large Metal Insert

Maximum Size: 780L x 780W x 400H mm

Small Metal Insert

Maximum Size: 420L x 420W x 400H mm

Hayman range

—



Hayman

Available in two sizes, the Hayman range offers a smooth finish with options to suit contemporary colour schemes.



Hayman Small

Size	930L x 930W x 490H mm
Products required	8 x Standard Units 8 x Universal Corner Units 12 x Capping Units 1 x Metal Insert/Brazier *Sold Separately
Build difficulty	Medium



Hayman Large

Size	1320L x 1280W x 490H mm
Products required	16 x Standard Units 8 x Universal Corner Units 16 x Capping Units 1 x Metal Insert/Brazier *Sold Separately
Build difficulty	Medium

Colours



Limestone



Charcoal

Components



Standard Unit

Size: 390L x 245W x 198H mm
Weight (each): 24kg
Face Area: 13 units per m²

Large Metal Insert

Maximum Size: 780L x 780W x 400H mm



Universal Corner

Size: 160L x 360W x 198H mm
Weight (each): 20kg

Small Metal Insert

Maximum Size: 420L x 420W x 400H mm



Capping Unit

Size: 390L x 245W x 90H mm
Weight (each): 16kg
Units per lineal metre: 2.56

Daydream range



Queensland Exclusive

Daydream

This diamond shaped block features a set back as each layer of blocks is installed while the split face finish and neutral colour palette is designed to suit complement a range of colour schemes.



Daydream

Size	1200L x 1200W x 360H mm
Products required	30 x Standard Units 1 x Metal Insert/Brazier *Sold Separately
Build difficulty	Easy

Colours



Limestone



Sandstone



Charcoal

Components



Standard Unit

Size: 295L x 203W x 130H mm
Weight (each): 12.19kg
Face Area: 25 units per m²

Metal Insert

Maximum Size: 600L x 600W x 360 H mm

Whitsunday range



Whitsunday

The Whitsunday range offers a split face finish with options to suit contemporary colour schemes. A simple design, mortarless interlock, and manageable weight means you can lay them yourself and enjoy a fire pit which is virtually maintenance free.



Whitsunday

Size	1200L x 1200W x 310H mm
Products required	20 x Standard Units 1 x Metal Insert/Brazier *Sold Separately
Build difficulty	Easy

Colours



Limestone



Sandstone



Charcoal

Components



Standard Unit

Size: 390L x 300W x 155H mm
Weight (each): 29kg
Face Area: 16.6 units per m²

Metal Insert

Maximum Size: 400L x 400W x 310 H mm

Bribie range



East Coast Exclusive

Bribie

Made from a small format, light weight garden edge block, Bribie is the easiest and fastest fire pit to build.



Bribie

Size	1100L x 1100W x 360H mm
Products required	54 x Standard Units 1 x Metal Insert/Brazier *Sold Separately
Build difficulty	Easy

Colours



Limestone

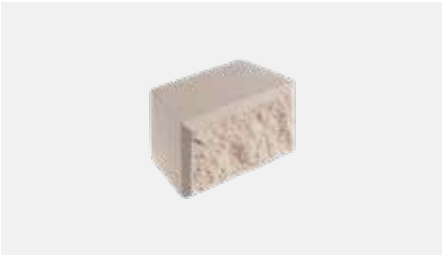


Sydney Blend



Charcoal

Components



Standard Unit

Size: 190L x 100W x 120H mm

Weight (each): 4.5kg

Units per lineal metre: 5.25

Metal Insert

Size: 800L x 800W x 360 H mm

Choosing a Fire Pit

Understanding which Fire Pits are best for your project can be challenging. For instructions on how to build your fire pit explore our range of installation guides or for inspiration on which fire pit to create, explore our range of expert designed outdoor spaces to help you select the right design for your backyard.



Explore our range

Ideas for Inspiration

For inspiration on which fire pit to create, explore our product range online. Our photo gallery and video library allows you to look at the finer details of each fire pit and see the subtle details which makes each unique.

Visit.
australmasonry.com.au/products/firepits

Build a Fire Pit

Installation Guides

Learn how to build your fire pit with our installation guides. Specific to each fire pit design, our installation guides offer step by step instructions to help you create a fire pit with unmistakeable style and outstanding longevity.

Visit.
australmasonry.com.au/technical-information/installation-guide



Discover more

Inspiration doesn't always come naturally, and your project is going to be there for a long time, so it's worth taking your time to enjoy the creative process. From visiting us at our Design Studios, and exploring our iVisualise Tools online, to chatting in person or over the phone, we're here to help.



Discover

Brickworks Design Studios
Your local Brickworks design studio is a one-stop destination for advice and inspiration, where you can experience the quality of our product range first-hand. Our experienced consultants will guide you through the range and help you find the best possible solution for your project – within your budget.

Call.
1300 Masonry

Create

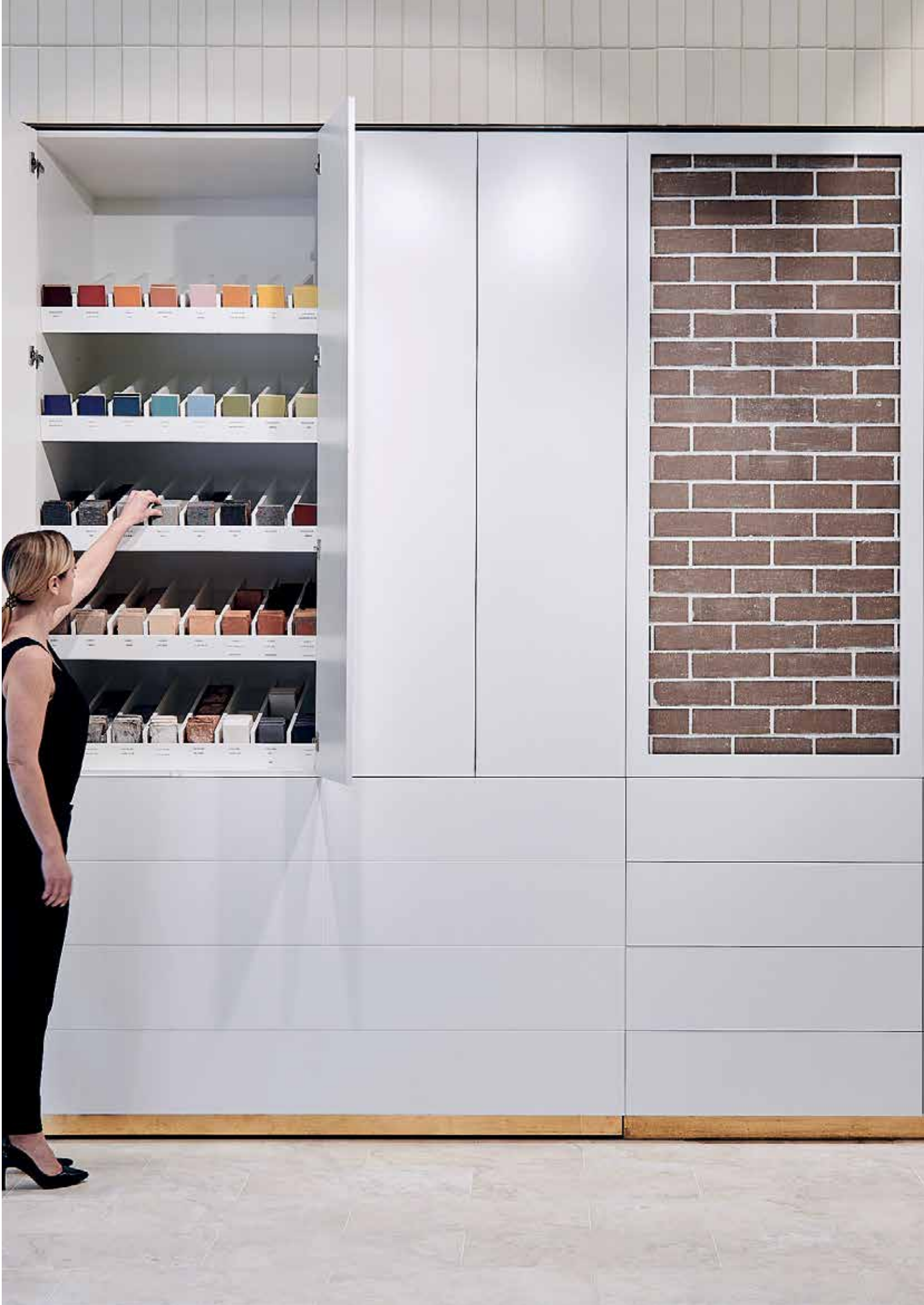
iVisualise Tools
Using artificial intelligence and digital technology, you're now able to experience colours, forms and profiles with our online colour visualisation tool. iVisualise helps make selection seamless and simple – whether you're looking for a traditional product, or something more contemporary.

Visit.
australmasonry.com.au/ivisualise

Learn

Colour Consultations
Building or renovating a home is a major investment – and it should be an enjoyable experience for you. We can help with a one-to-one colour consultation where our experts can guide you on colour trends, the right fit and style, and ideas that will give you a genuinely individual look.

Book.
brickworks.com.au/colour



Backed by Brickworks

Local expertise. Global quality. Brickworks Building Products are one of Australia’s biggest building material manufacturers. With heritage going all the way back to one of Australia’s founding brick producers, we’re proud of our reputation for design, innovation and sustainability.

BRICKWORKS

AUSTRALIA

-  **australbricks**
-  **australmasonry**
-  **australprecast**
-  **southern cross
cement**
-  **bristiler roofing**
-  **BOWRAL BRICKS**
-  **DANIEL ROBERTSON**
-  **NUBRICK**
-  **GB Masonry**
-  **URBANSTONE**
-  **Terraçade**
-  **CAPITAL BATTENS**

NORTH AMERICA

-  **Glen-Gery**
-  **Sioux City Brick**
Since 1913
-  **Lawrenceville
BRICK**
-  **Cushwa
BRICK**

EXCLUSIVE DISTRIBUTOR

-  **La Escandella**
ROOFING THE WORLD
-  **S.ANSELMO**
vivere la differenza
-  **la paloma
cerámicas**
-  **CERAMICHE
KEOPE**



Get in touch

—

For more information, advice and samples get in touch with the Austral Masonry team.

Visit. australmasonry.com.au

Call. 1300 Masonry

Design Centres and Studios

North Queensland Townsville Tel. 07 4431 2800 2 Blakey Street Garbutt QLD 4814 Cairns Tel. 07 4034 6100 8 Palmer Street Portsmith QLD 4870	New South Wales Coffs Harbour Tel. 02 6690 6200 27 Lawson Crescent Coffs Harbour NSW 2450 Horsley Park Tel. 02 9840 2333 4 Latitude Road Horsley Park NSW 2175	Victoria Deer Park Tel. 03 9303 4713 972 Western Highway Deer Park VIC 3023 Geelong Tel. 03 5221 2400 200-204 Torquay Road Grovedale VIC 3216 Lynbrook Tel. 03 9303 4708 Cnr Western Point Highway & Northey Road Lynbrook VIC 3975 Wollert Tel. 03 8793 8222 Brick Makers Drive Wollert VIC 3750	Western Australia Jandakot Tel. 08 9395 3650 27 Jandakot Road Jandakot WA 6164 Mandurah Tel. 08 9584 5500 53 Reserve Drive Mandurah WA 6210 Osborne Park Tel. 08 9260 2700 1/94 Hector St West, Osborne Park WA 6017 Wangara Tel. 08 9406 6700 18 Inspiration Drive Wangara WA 6065
Central Queensland Rockhampton Tel. 07 4921 5777 42/50 Johnson Street Parkhurst QLD 4702	Newcastle Tel. 02 4944 6711 2 Yangan Drive Beresfield NSW 2322 Albion Park Tel. 02 4257 1566 45 Princes Highway Albion Park NSW 2527	South Australia West Hindmarsh Tel. 08 8417 8900 4 South Road West Hindmarsh SA 5007 Golden Grove Tel. 08 8282 6301 201 Greenwith Rd Golden Grove SA 5125	
South Queensland Rochedale Tel. 07 3347 2111 105 Gardner Road Rochedale QLD 4123 Sunshine Coast Tel. 07 5293 5001 200 Nicklin Way Warana QLD 4575 Toowoomba Tel. 07 4632 6377 29 Mort Street Toowoomba QLD 4350	Punchbowl Tel. 02 9915 9100 72 Christian Road Punchbowl NSW 2196 Australian Capital Territory Canberra Tel. 02 6239 1286 7 Lithgow Street Fyshwick ACT 2609		

Follow Us



Visit. australmasonry.com.au

Call. 1300 Masonry

A BRAND OF

BRICKWORKS

