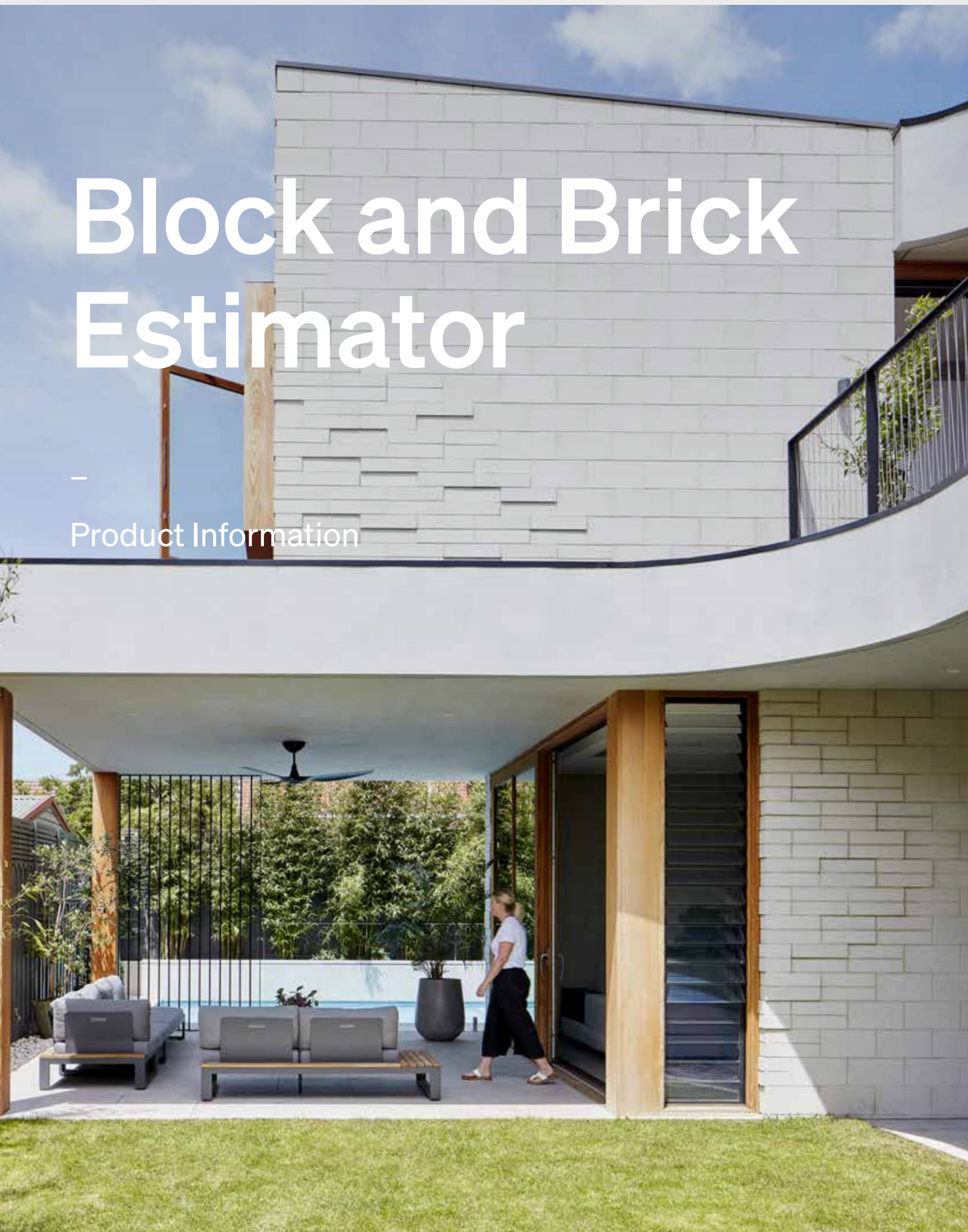


Block and Brick Estimator

—
Product Information



Block and Brick Estimator

The following information is designed to offer guidance and to assist you when estimating materials for your next project.

Block & Brick Estimator	Full Height	Half Height	Standard Brick
Masonry unit face size (L x H mm)	390 x 19mm	390 x 90mm	230 x 76mm
No. units per m ²	12.5	25	50

Material Quantities for 1m of Mortar

- For every 800 full height blocks (390 long x 190 high) or 64m² of wall, approximately 1m³ of mortar mix is required, allowing for wastage.
- There are 12.5 full blocks per square metre of wall surface area.

Masonry Block	
M3	Mix in 1 : 1 : 6 proportions
	Cement 10 bags (20kg)
	Lime 5 bags (20kg each)
	Sand 1.0m ³ (1.4t)
M4	Mix in 1 : 0.5 : 4.5 proportions
	Cement 13 bags (20kg each)
	Lime 3 bags (20kg each)
	Sand 1.0m ³ (1.4t)

Note: Use clean, sharp sand and allow 20% for bulking.

* Above is a guide only for weight ratios.

Grout for Core Filling	Core Filling Quantities
------------------------	-------------------------

The correct grout specification (mix design) is critical to achieving the structural design of a reinforced wall. The grout used to fill the cores of blockwork walls should be specified as follow:

- Grout to comply with AS3700 Clause 10.7.
- Characteristic Compressive Strength minimum 20MPa.
- Cement content not less than 300kg/m³.
- Round aggregate (if any not more than 10mm).
- Clean sand (1.2m)
- A pouring consistency which ensures that the cores are completely filled and the reinforcement completely surrounded without segregation of the constituents.

Control Joints

Because of temperature variations and the shrinkage in a concrete masonry wall after construction, it is necessary to provide control joints in blockwork at a max spacing of 6m and at points of potential cracking, e.g. beside openings and at large steps in wall or footing.

- Joint width is 10mm for panels up to 6000mm long.
- Joint sealants should be applied towards the end of construction to minimise the effect of panel movement.

Block Type	1m ³ Grout
15.01	230
15.48	210
20.01	150
20.48	125
30.01	90
30.48	69
40.925	50

Block and Brick Estimator

Efflorescence

Efflorescence is the formation of salt deposits, usually white, on or near the surface of concrete causing a change in appearance. Apart from the discolouration, efflorescence is generally harmless.

Austral Masonry recommends the use of sealers and AUS-LOC mortar additive to help combat efflorescence.

Sealers are applied to the blocks after installation and help to prevent migration of salts in the concrete mixture from migrating to the surface of the blocks face. Please contact your local Austral Masonry representative for recommended sealers.

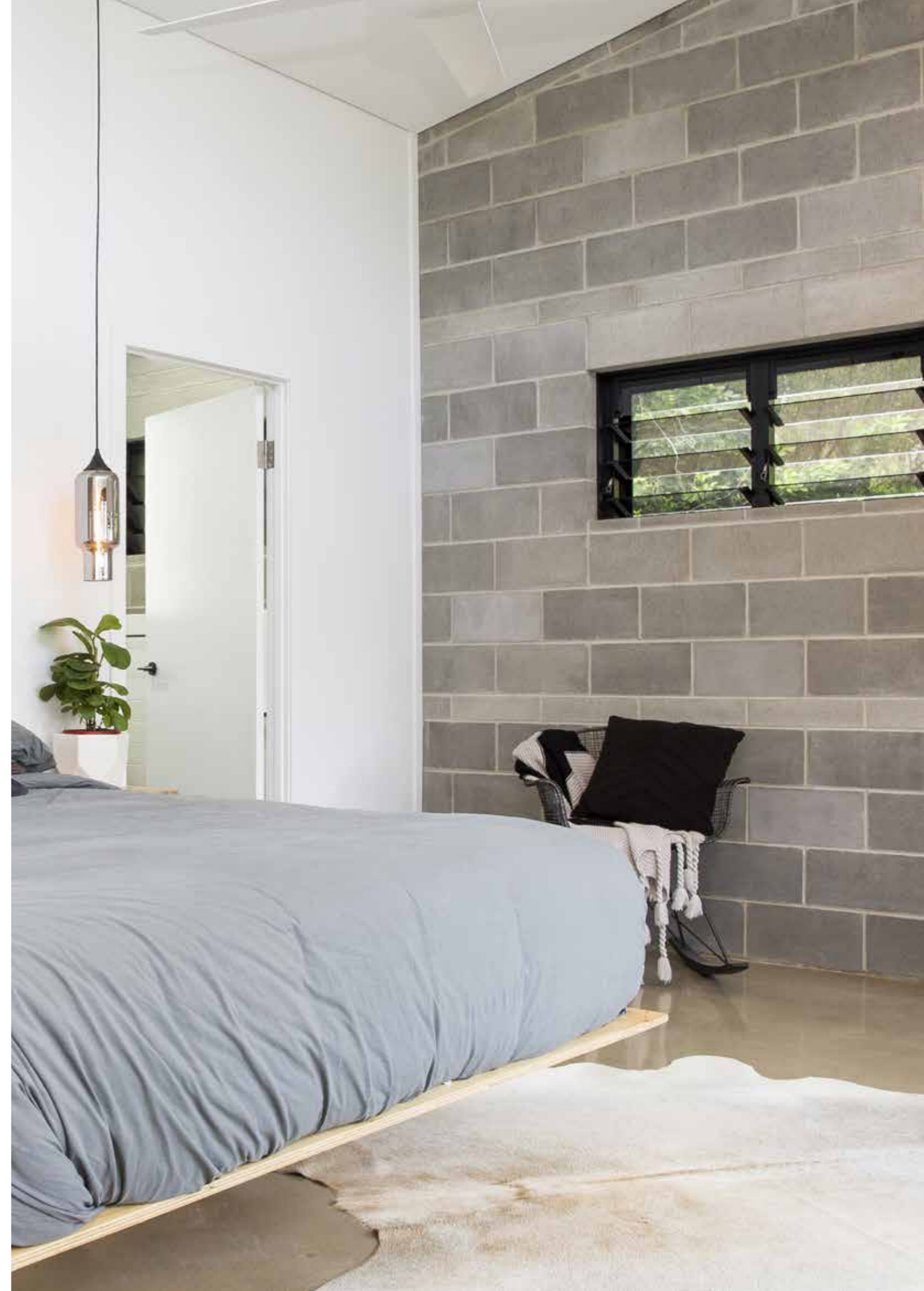
AUS-LOC mortar additive is recommended as a water repellent admixture for cement/sand mortar designed specifically for laying water repellent concrete blocks made with the addition of Tech-Dry Block Emulsion.

It may also be used as a water resistant admixture for other cement/sand mixtures such as cement/sand renders or concrete masonry.

Some of the important features of AUS-LOC include:

- Non-toxic water-based formulation.
- Improves workability of cement/sand mortars.
- Increased adhesion of cement/sand mortar.
- Reduces water penetration, efflorescence and water-borne staining.
- Does not significantly change vapour permeability of cement/sand mortars.
- Easy to use and cost effective.

As sand & cement mortars vary significantly, a test MUST be carried out prior to application to find out the suitability of this product for the purpose.



Visit. australmasonry.com.au

Call. 1300 Masonry

A BRAND OF

BRICKWORKS

