

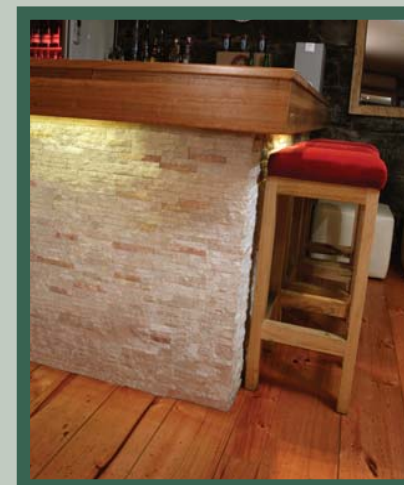
LITE-STONE™

Light weight natural stone feature



Introducing Austral Bricks Lite-Stone™, a light-weight natural stone facade, designed for simple installation by professional applicators or competent DIY-ers.

The Lite-Stone collection of stylish colours have been selected to blend beautifully with contemporary or heritage architecture for both indoor and outdoor applications. Austral Bricks Lite-Stone has been manufactured to a consistent high quality standard. At 28kg per square metre, Austral Bricks Lite-Stone is ideal for adhesive fixing to most substrates. Use as a feature wall, feature panel, column cladding and retaining wall facades. A timeless design that will add character to any home.



Austral Lite-Stone Benefits include:

- Light Weight
Averages 28kg per square metre
- Clean Backing
The back of each piece has less than 15% epoxy allowing maximum contact with installation adhesive.

- Packing
Supplied in shrink-wrapped packs of 0.25m², 4 packs= 1m²
- Quality
Sizing, square sides, stone quality

Colour Variation: The product photographs in this publication are indicative only of the range of colours and textures. For a more accurate representation visit an Austral Bricks display centre, product sample packs are available. All dimensions quoted are nominal.

Product Range



Valley Coal
400 x 125mm



Territory Slate
400 x 125mm



Tiger Sand
400 x 125mm



Calcite Blend
400 x 125mm

AUSTRAL BRICKS HEAD OFFICES

VIC – (03) 9801 1122
NSW – (02) 9830 7777
ACT – (02) 6239 1286
QLD – (07) 3347 2111
WA – (08) 9261 9999
SA – (08) 8251 1166
TAS – (03) 6391 1511