

Transport Management Plan

for the

New Berrima Clay/Shale Quarry

PA08_0212

Approved

Prepared by:



R.W. CORKERY & CO. PTY. LIMITED

March 2016

Approved by
the Secretary's nominee, Howard Reed,
on 13 May 2016

Transport Management Plan

for the

New Berrima Clay/Shale Quarry

PA08_0212

Prepared for:

The Austral Brick Company Pty Limited
ABN: 52 000 005 550
Wallgrove Road,
HORSLEY PARK NSW 2164
PO Box 6550
WETHERILL PARK NSW 1851

Telephone: (02) 9830 7844
Facsimile: (02) 9831 2383
Email: stephen.wall@australbricks.com.au

Prepared by:

R.W. Corkery & Co. Pty. Limited
Geological & Environmental Consultants
ABN: 31 002 033 712

Brooklyn Office:

1st Floor, 12 Dangar Road
PO Box 239
BROOKLYN NSW 2083

Telephone: (02) 9985 8511

Facsimile: (02) 6361 3622

Email: brooklyn@rwcorkery.com

Orange Office:

62 Hill Street
ORANGE NSW 2800

Telephone: (02) 6362 5411

Facsimile: (02) 6361 3622

Email: orange@rwcorkery.com

Brisbane Office:

Suite 5, Building 3
Pine Rivers Office Park
205 Leitchs Road
BRENDAL QLD 4500

Telephone: (07) 3205 5400

Facsimile: (02) 6361 3622

Email: brisbane@rwcorkery.com

This Copyright is included for the protection of this document

COPYRIGHT

© R.W. Corkery & Co. Pty Limited 2016
and
© The Austral Brick Company Pty Limited 2016

All intellectual property and copyright reserved.

Apart from any fair dealing for the purpose of private study, research, criticism or review, as permitted under the Copyright Act, 1968, no part of this report may be reproduced, transmitted, stored in a retrieval system or adapted in any form or by any means (electronic, mechanical, photocopying, recording or otherwise) without written permission. Enquiries should be addressed to R.W. Corkery & Co. Pty Limited.

CONTENTS

	Page
COMMONLY USED ACRONYMS	V
KEY FACTS AND FIGURES	VI
1. INTRODUCTION.....	1
2. APPROVED ACTIVITIES	3
3. CONSULTATION.....	5
3.1 GOVERNMENT AGENCY CONSULTATION.....	5
3.2 LANDHOLDER CONSULTATION	5
3.3 COMMUNITY CONSULTATION.....	5
4. LEGAL AND OTHER REQUIREMENTS	6
5. OBJECTIVES AND OUTCOMES.....	8
6. ROLES AND RESPONSIBILITIES.....	8
7. COMPETENCE TRAINING AND AWARENESS	9
8. TRAFFIC MANAGEMENT MEASURES	9
8.1 INTRODUCTION	9
8.2 INTERSECTION UPGRADES	9
8.2.1 Berrima Road/Quarry Access Road Intersection	9
8.2.2 Berrima Road/Taylor Avenue Intersection	10
8.3 ROAD MAINTENANCE	10
8.4 TRANSPORT MANAGEMENT	10
9. EVALATUION OF COMPLIANCE.....	11
10. COMPLAINTS HANDLING AND RESPONSE	11
11. CORRECTIVE AND PREVENTATIVE ACTIONS.....	12
12. INCIDENT REPORTING	12
13. PUBLICATION OF MONITORING INFORMATION.....	13
14. PLAN REVIEW	13
 APPENDICES	
Appendix 1 Driver's Code of Conduct.....	15

CONTENTS

Page

FIGURES

Figure 1	Locality Plan	2
Figure 2	Proposed Site Layout	4

TABLES

Table 1	Hours of Operation	3
Table 2	Project Approval Requirements Relating to Transport	6
Table 3	Project Approval Statement of Commitments	7
Table 4	Objectives and Key Performance Outcomes – New Berrima Quarry	8
Table 5	Roles and Responsibilities	8

COMMONLY USED ACRONYMS

AHD	Australian Height Datum
AS	Australian Standard
Council	Wingecarribee Shire Council
DPE	Department of Planning and Environment
EP&A Act	<i>Environmental Planning and Assessment Act 1979</i>
EPA	Environment Protection Authority
EPL	Environment Protection Licence
NATA	National Association of Testing Authorities
PA	Project Approval
RMS	Roads and Maritime Services

KEY FACTS AND FIGURES

Project Areas (approximate)	Quarry Site – 51 ha Extraction Area Stages 1-4 – 5.5 ha Extraction Area Stages 5-7 – 5.0 ha Surplus Overburden Stockpile Area – 1.5 ha Final Landform Area South – 1.4 ha Total Area of Disturbance - 14 ha
Annual Production	Maximum 150 000t per year
Approved Quarry Life	Until 30 June 2045
Capital Investment	Approximately \$1 million
Employment	Approximately four full time equivalent positions
Extraction Equipment	Scraper, bulldozer, haul truck, front-end loader
Extraction Floor	640m AHD
Extraction Stages and Resources	Stages 1 to 4 (southern section of extraction area) Approximately 1.6 million tonnes Stages 5 to 7 (northern section of extraction area) Approximately 2.3 million tonnes
Hours of Operation	Monday to Friday - 7:00am to 5:00pm Saturday - 8:00am to 1:00pm Sundays and Public Holidays – No Operations
Length of Sealing of Quarry Access Road	Approximately 400m (from Berrima Road)
Traffic Volumes (approximate)	Typical day - 0 to 34 truckloads (0 to 68 truck movements) Typical transport campaign day – 17 to 34 truckloads (34 to 68 truck movements) Maximum per day - 68 truckloads (132 truck movements)
Visibility Barrier Dimensions (approximate)	Central Visibility Barrier - approximately 8m to 12m high, 30m to 45m wide, and 420m long (Area =1.5 ha) Northern Visibility Barrier - approximately 8m to 9m high, 35m to 50m wide, and 160m long (Area = 0.7 ha) Southern Visibility Barrier – up to 4m high, up to 20m wide, and up to 350m long (Area = 0.7 ha)

1. INTRODUCTION

This *Transport Management Plan* (the Plan) has been prepared by R W Corkery & Co Pty Limited on behalf of The Austral Brick Company Pty Ltd (Austral) for the New Berrima Quarry (the Quarry). The Quarry is located approximately 1.5km east of New Berrima in the Southern Highlands of NSW (**Figure 1**).

This Plan has been prepared in satisfaction of *PA Condition 3(29)* and *5(3)* of Project Approval (PA) 08_0212¹ and describes the following.

- The consultation undertaken during preparation of this Plan.
- The objectives and key performance outcomes for this Plan and the Quarry.
- Roles and responsibilities.
- Competence training and awareness.
- Transport management measures that would be implemented during construction and operation of the Quarry.
- Evaluation of compliance with traffic requirements.
- Complaints handling and response procedures that will be implemented.
- Incident reporting procedures.
- Plan review.

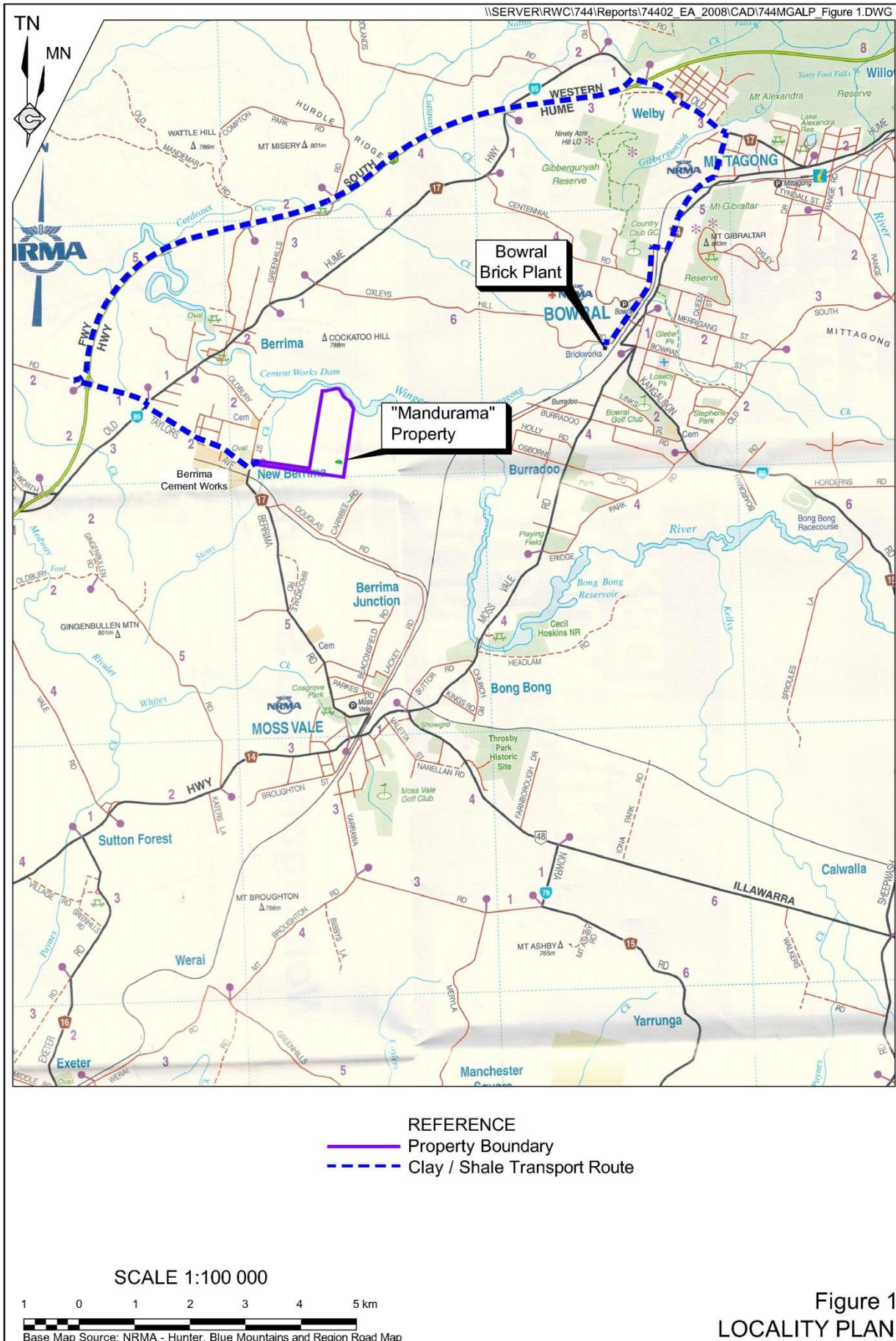
The approved Quarry is fully described in the *Environmental Assessment* dated May 2015 to support a modification to PA 08_0212, and the *Environmental Assessment* dated December 2010 and associated documentation prepared to support the application for PA 08_0212. Key facts and figures about the approved quarry provided on the previous page and an overview of the approved activities and staged operations are outlined in Section 2.

In addition, a range of other management plans have also been prepared to guide operations within the Quarry. These include the following.

- Environmental Management Strategy.
- Noise Management Plan.
- Air Quality Management Plan.
- Water Management Plan.
- Landscape Management Plan.
- Aboriginal Cultural Heritage Management Plan.

It is noted that traffic-related noise is covered in the Noise Management Plan.

¹ All conditions in Project Approval 08_0212 are referred to as *PA Condition* ...



2. APPROVED ACTIVITIES

The approved activities at the Quarry (**Figure 2**) comprise the following.

- Construction of visibility barriers to provide visual screening for the quarry operations.
- Establishment of an extraction area to extract clay/shale using standard ripping, pushing and loading techniques.
- Use of an existing access road and upgrading of two intersections.
- Transportation of up to 150 000t per year of quarry products via Berrima Road using articulated and rigid trucks not exceeding 19m in length.

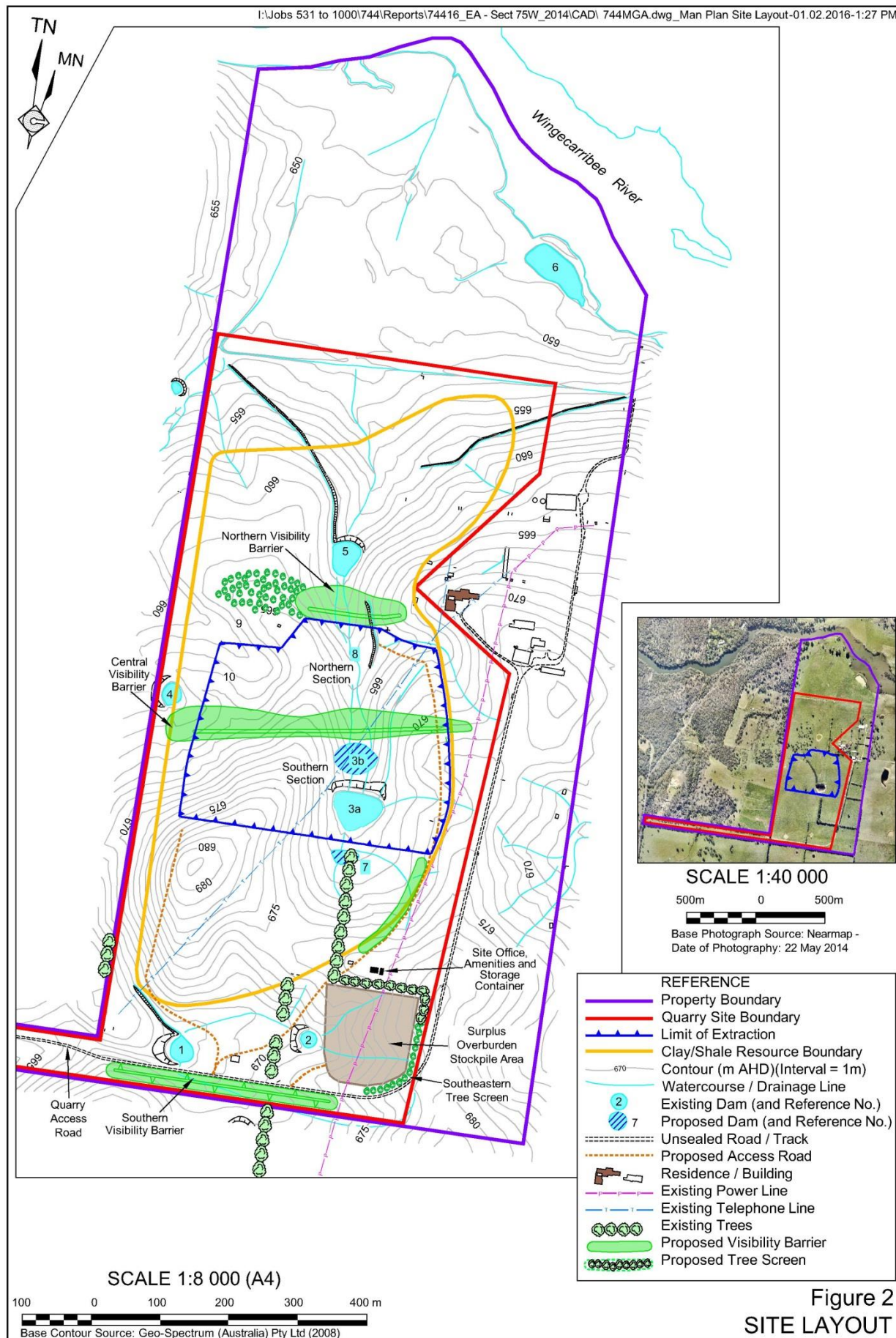
The relevant limitations upon the approved activities nominated in Conditions within PA 08_0212 are as follows.

- “The Proponent shall not carry out any development in the extraction area below a level of 640m AHD” *PA Condition 2(6)*.
- “The Proponent shall not extract more than 150 000 tonnes of extractive materials from the site in any calendar year” *PA Condition 2(7)*.
- “The Proponent shall not transport more than:
 - a) 150 000 tonnes of product from the site in any calendar year;
 - b) 68 laden trucks from the site in a day; and
 - c) 8 laden trucks from the site in an hour.

The approved quarry life is until 30 June 2045 and the approved hours of operation are outlined in **Table 1**.

Table 1
Hours of Operation

Day	Extraction Operations	Clay/Shale Transportation
Monday – Friday	7:00am to 5:00pm	7:00am to 4:00pm
Saturday	8:00am to 1:00pm	8:00am to 1:00pm
Sundays and Public Holidays	None	None



3. CONSULTATION

3.1 GOVERNMENT AGENCY CONSULTATION

The following government agency consultation was undertaken during the preparation of this Plan.

- An email was sent to the Roads and Maritime Services (RMS) on 16 August 2012 seeking any requirements and/or input for this Plan. A response was received from RMS on 4 September 2012 which stated that Council is the relevant authority for the roads which are to be upgraded, and RMS does not require referral of this Plan. RMS did, however, request to review concept design plans for the upgrade of the Taylor Avenue and Berrima Road junction when they are prepared.²
- An email was sent to Wingecarribee Shire Council on 22 October 2015 to confirm any requirements for this Plan. Council replied on 3 November 2015 confirming they wish to receive a draft copy of this Plan. They also expressed the following.

“Council is concerned about impact on Cavendish St and the right turn into Kirkham Rd – as this will be very repetitive, Council is concerned that drivers might tend to cut corners and felt that a median in Kirkham Rd would assist in preventing this”.³

- A draft version of this Plan was provided to Council on 2 February 2016. Council’s response on 17 March 2016 indicated the following.

Council provided an update on the proposed construction/funding of the intersection of Berrima Road and Taylor Avenue (see Section 8.2.2).

3.2 LANDHOLDER CONSULTATION

No formal consultation was required with surrounding landowners with respect to this document.

3.3 COMMUNITY CONSULTATION

Austral will maintain contact with the community through the required Community Committee (CCC). This committee will be established prior to the commencement of site activities. The CCC will meet at intervals considered appropriate by the committee.

² These plans are likely to be superseded given Council’s plans to upgrade the entire Taylor Avenue and Berrima Road intersection.

³ This matter is addressed in Section 8.3.

4. LEGAL AND OTHER REQUIREMENTS

Austral was granted PA 08_0212 by the Director-General of Planning and Infrastructure on 7 July 2012 pursuant to Part 3A of the *Environmental Planning and Assessment Act 1979* (EP&A Act). Modification 1 of PA 08_0212 was issued on 15 December 2015 to incorporate modifications to the Quarry associated with an alternate extraction area boundary. PA 08_0212 includes the required criteria that Austral needs to comply with and sets out the matters to be addressed within this plan. Relevant noise-related conditions in PA 08_0212 are reproduced in **Table 2**.

Table 2
Project Approval Requirements Relating to Transport

Page 1 of 2

Page 1 of 1

Schedule	Condition	Plan Section																
TRANSPORT																		
2(8)	The Proponent shall not transport more than: a) 150,000 tonnes of product from the site in any calendar year; b) 68 laden trucks from the site in a day; and c) 8 laden trucks from the site in an hour.	Section 8.3																
2(9)	The Proponent may only transport extractive material on the haul route.	Section 8.3																
3(6)	<div>The Proponent shall comply with the operating hours in Table 2. <i>Table 2 - Operating Hours</i></div> <table><tr><th>Day</th><th>Transport</th><th>Quarrying Operations</th><th>Construction</th></tr><tr><td>Monday – Friday</td><td>7 am to 4 pm</td><td>7 am to 5 pm</td><td>7 am – 5 pm</td></tr><tr><td>Saturday</td><td>8 am to 1 pm</td><td>8 am to 1 pm</td><td>8 am – 1 pm</td></tr><tr><td>Sundays and Public Holidays</td><td>None</td><td>None</td><td>None</td></tr></table> <div>Note: Maintenance activities may occur at any time provided they are inaudible at privately-owned residences.</div>	Day	Transport	Quarrying Operations	Construction	Monday – Friday	7 am to 4 pm	7 am to 5 pm	7 am – 5 pm	Saturday	8 am to 1 pm	8 am to 1 pm	8 am – 1 pm	Sundays and Public Holidays	None	None	None	Section 8.3
Day	Transport	Quarrying Operations	Construction															
Monday – Friday	7 am to 4 pm	7 am to 5 pm	7 am – 5 pm															
Saturday	8 am to 1 pm	8 am to 1 pm	8 am – 1 pm															
Sundays and Public Holidays	None	None	None															
3(23)	Prior to transporting any extractive material from the site, the Proponent shall: a) construct the junction of the site access road with Berrima Road to Basic Right Turn and Basic Left Turn Treatment standard for a 19m semi-trailer; b) construct a raised concrete median in Berrima Road on the south bound approach to its junction with MR372; c) provide appropriate traffic signage and line-marking, in accordance with AUSTROADS Guide to Road Design and to the satisfaction of the Council.	Section 8.2																
3(24)	<div>Prior to transporting any extractive material from the site, the Proponent shall: a) construct the Berrima Road/Taylor Avenue junction to give priority to MR372 incorporating Rural BA Left and Right turn treatments for a 19m semi-trailer; b) provide appropriate traffic signage and line-marking, in accordance with AUSTROADS Guide to Road Design and to the satisfaction of the Council and the RMS.</div> <div>If the Council undertakes or proposes to undertake a superior treatment of this intersection upgrade, then this condition may be fulfilled by the Proponent paying a monetary contribution to the Council equivalent to the cost of the upgrades specified under this condition, as assessed by a qualified independent valuer or quantity surveyor appointed by the Secretary. The costs of the valuation are to be paid by the Proponent.</div> <div>Any dispute over the interpretation of this condition or a satisfactory valuation can be referred by any party to the Secretary for resolution. The decision of the Secretary in any such dispute shall be final.</div>	Section 8.2																

Table 2 (Cont'd)
Project Approval Requirements Relating to Transport

Page 2 of 2

Schedule	Condition	Plan Section
3(25)	The Proponent shall ensure heavy vehicles associated with the Project travel along haulage routes specified in the EA and the haulage route diagram in Figure 3 of APPENDIX A to this approval to the satisfaction of the Secretary.	Section 8.3 & Figure 1
3(26)	The Proponent shall pay to Council an annual contribution of 91.2 cents per cubic metre of extractive material exported from the site (indexed annually to Consumer Price Index) for the life of the Project. The volume of extractive material exported from the site must be established by way of a volumetric survey of the site carried out by a registered surveyor. Each annual volumetric survey must be provided to Council to allow verification of the contribution amount. The first annual payment falls due 12 months from the commencement of operation. <i>Note: The Proponent must provide a base-line survey of the site to the Council prior to the commencement of operations.</i>	Section 8.2.2
3(27)	The Proponent shall provide sufficient parking for all project-related traffic, in accordance with Council's parking code.	Section 8.3
3(28)	The Proponent shall ensure that: a) vehicles on site do not exceed a speed limit of 30 kilometres per hour; b) all loaded vehicles entering or leaving the site have their loads covered; and c) all loaded vehicles leaving the site are cleaned of sand and other materials before they leave the site so they do not track dirt onto the public roads.	Section 8.3
3(29)	The Proponent shall prepare and implement a Transport Management Plan for the project to the Secretary. This plan must: a. be submitted prepared in consultation with the RMS and Council, and submitted to the Secretary for approval prior to carrying out any quarrying operations on site;	Section 8.1
	b. include a drivers' code of conduct for the project;	Appendix 1
	c. describe the measures that would be implemented to ensure: • establishing a CB radio communication protocol with the local bus companies, to improve driver awareness of quarry truck and school bus locations along haulage routes; • the drivers of project-related vehicles comply with the drivers' code of conduct for the project; and • compliance with the relevant conditions of this approval; and	Section 8.3, 8.4
	d. include a program to monitor the effectiveness of the implementation of these measures.	Section 10
3(30)	Should the Traffic Management Plan (TMP) for the proposed works require a reduction of the speed limit on Berrima Road and/or Taylor Avenue, a Speed Zone Authorisation shall be obtained from RMS Traffic Operations Unit (TOU) prior to commencing work within the road reserve.	Section 8.2

Table 3
Project Approval Statement of Commitments

Commitment			Plan Section
Minimisation of traffic impacts, including road safety.	3.1	Seal the last 400m of the Site access road from the entrance to the Project Site	Section 8.3
	3.2	Cover all loads.	Section 8.3
	3.3	Ensure truck drivers adhere to the existing Austral Bricks Drivers Code of Conduct which identifies the required safety and courtesy requirements for drivers travelling to and from all Austral Bricks quarries.	Section 8.3
	3.4	Adopt all safety procedures during the Berrima Road / access driveway intersection construction and incorporate in the Section 138 Permit sought under the Roads Act 1993.	Section 8.2

5. OBJECTIVES AND OUTCOMES

Table 4 presents the objectives and key performance outcomes for this Plan and the Quarry.

Table 4
Objectives and Key Performance Outcomes – New Berrima Quarry

Objectives	Key Performance Outcomes
Transport	
(a) To ensure compliance with all relevant Project Approval and Environment Protection Licence criteria and reasonable community expectations.	(i) Compliance is achieved with all relevant criteria nominated in the Project Approval 08_0212 and reasonable community expectations.
(b) To implement appropriate transport management and mitigation measures during all stages of the Project.	(ii) All identified transport management and mitigation measures are implemented to the extent required.
(c) To implement an appropriate complaints handling and response protocol.	(iii) Complaints (if any) are handled and responded to in an appropriate and timely manner.
(d) To implement continual improvement for investigating, implementing and reporting on reasonable and feasible measures to reduce noise.	(iv) An appropriate continual improvement program has been implemented.
(e) To implement an appropriate incident reporting program, if required.	(v) Traffic-related incidents (if any) are reported in an appropriate and timely manner.

6. ROLES AND RESPONSIBILITIES

Table 5 lists the roles and responsibilities of the personnel responsible for the development and operation of the New Berrima Quarry and implementation of this plan.

Table 5
Roles and Responsibilities

Roles	Responsibilities
NSW Manufacturing Manager	<ul style="list-style-type: none"> Ensure all documentation is reviewed, as required. Ensure adequate resources are available to enable implementation of the Plan.
Quarry/ Manager Supervisor	Accountable for the overall environmental performance of the New Berrima Quarry transport operations, including: <ul style="list-style-type: none"> all traffic management measures outlined in Section 8.
Environmental Officer	Manage the implementation of the following components of this Plan. <ul style="list-style-type: none"> Conduct environmental component of site induction for all employees and contractors as outlined in Section 7. Evaluation of compliance as outlined in Section 9 and related follow-up actions. Complaints handling and response as outlined in Section 10. Incident reporting as outlined in Section 12. Publication of reports as outlined in Section 13. Review of this Plan as outlined in Section 14.
All personnel	<ul style="list-style-type: none"> Ensure training and awareness induction has been undertaken. Compliance with this Plan.

7. COMPETENCE TRAINING AND AWARENESS

All relevant Company personnel and transport contractors and their employees will undergo transport awareness training as part of the site induction program. The following areas will be covered in the induction.

- The importance of only travelling on the approved route shown in **Figure 1**.
- Awareness of hours for shale transport.
- Awareness and familiarity with the Drivers Code of Conduct (**Appendix 1**).
- Awareness of community complaints protocols.

The Environmental Officer will be responsible for ensuring the appropriate traffic management training is included in the site induction and that each truck driver signs the Code of Conduct prior to commencing transport operations.

Austral will require the Code of Conduct to be reviewed annually and each driver to re-sign the reviewed Code every year.

8. TRAFFIC MANAGEMENT MEASURES

8.1 INTRODUCTION

During the operational life of the Quarry, traffic travelling between the Quarry and Bowral Brick Plant each day will typically include predominantly truck and dog trailers with smaller numbers of semi-trailer trucks and light vehicles.

This section presents the traffic management measures that will be implemented during the life of the Quarry to ensure that the requirements of *PA Conditions 3(23) to 3(30)* and the objectives of this plan are achieved. These measures include the following.

- Modifications to two intersections as required by *PA Condition 3(23)* and *3(24)*.
- Monitoring of traffic levels and times.
- General measures identified in the Statement of Commitments.
- Driver's Code of Conduct (**Appendix 1**).
- Enforcement of speed limits.

8.2 INTERSECTION UPGRADES

8.2.1 Berrima Road/Quarry Access Road Intersection

Austral will upgrade the intersection of Berrima Road and the Quarry Access Road prior to transporting any extractive material from the Quarry. This upgrade will effectively provide for a dedicated right-turn lane into the property and a short left turn lane out of the property. This upgrade will be designed and constructed in consultation with and to the satisfaction of Wingecarribee Shire Council, and constructed in accordance with *PA Condition 3(23)* (**Table 2**), the Austroads *Guide to Road Design* and relevant safety requirements. Austral will engage a suitable qualified contractor to prepare all documentation for Council's approval and to construct the intersection.

8.2.2 Berrima Road/Taylor Avenue Intersection

PA Condition 3(24) requires Austral to upgrade the intersection of Berrima Road/Taylor Avenue to accommodate the truck movements associated with the Quarry. However, as foreshadowed by the *PA Condition 3(24)* Wingecarribee Shire Council plans to upgrade the intersection of Berrima Road and Taylor Avenue utilising Commonwealth and developer funds, replacing the existing T-junction intersection with a B triple capacity roundabout. However, correspondence from Council has confirmed that funding has been received from the Federal Government National Stronger Regions Fund for the Commonwealth's contribution of \$4.6M for their 50% share in the intersection upgrade. Council is yet to establish how Council's share of \$4.6M for the intersection upgrade is to be funded. However, the contribution from Austral towards the upgrade of the intersection of Berrima Road and Taylor Avenue will be set aside, and paid to Council once the work is completed by Council.

Council would be responsible for obtaining all relevant permits/authorisation to enable the intersection upgrading to be undertaken.

8.3 ROAD MAINTENANCE

In accordance with *PA Condition 3(26)*, Austral will pay to Council an annual contribution of 91.2 cents per cubic metre of extractive material exported from the Quarry (indexed annually to Consumer Price Index) for the life of the Project. The first payment will be made 12 months following the commencement of operations. Council requires the number of cubic metres attracting the contribution to be calculated following a survey of the Quarry to identify the volume of material removed.

8.4 TRANSPORT MANAGEMENT

In order to achieve compliance with PA 08_0212 requirements, Austral will implement the following.

- Maintain records of all heavy vehicles arriving and departing from the Quarry, including their classification and time of arrival/departure.
- Prepare a monthly and annual summary of product-related vehicle movements, including date, time and amount of material transported. A summary of these records will be provided to the Department of Planning and Environment and Wingecarribee Council on a quarterly basis.
- Ensure that all heavy vehicles associated with the Quarry use the prescribed route as outlined in *PA Condition 3(25)* and shown in **Figure 1**.
- Ensure only extractive material is transported on the approved haul route,
- Ensure no more than 150 000 tonnes of product is transported from the Quarry in any calendar year.
- Ensure no more than 68 laden trucks per day or 8 laden trucks per hour leave the Quarry.

- Ensure all laden trucks entering or leaving the Quarry have loads covered.
- Ensure all loaded vehicles to not track dirt and other materials onto public roads, which will be achieved by sealing 400m of the Quarry access road from the Quarry entrance.
- Ensure that heavy vehicles depart the Quarry between the hours of 7:00am to 4:00pm Monday to Friday and 8:00am to 1:00pm Saturdays.
- Establish a CB radio communication protocol with the local bus companies.
- Ensure all drivers comply with the Drivers' Code of Conduct (**Appendix 1**), including complying with speed limits at the Quarry (30 km/h) and off site. The Code of Conduct will specifically identify the need for drivers not to cut the corner when entering Kirkham Road from Cavendish Street within Bowral.
- Provide sufficient parking at the Quarry for all Quarry-related traffic.

9. EVALUATION OF COMPLIANCE

Austral will record traffic-related data to establish compliance with *PA Condition 2(8)* and *3(6)*. Compliance with other transport-related conditions (**Table 2**) would be established following the completion of the subject works or activities.

A summary of the results of all compliance matters relating to traffic and transport would be presented in the relevant *Annual Review*.

10. COMPLAINTS HANDLING AND RESPONSE

Transport-related complaints may be received via one of the following methods.

- Directly via the 24-hour, 7 day per week Community Information Line (1800 635 620) or via the Bowral Brick Plant phone line (4861 3031). This number will be displayed on a sign at the Quarry entrance and on Austral's web site.
- Directly via a dedicated email address nswenvironmental@australbricks.com.au which will be advertised in a similar manner to the Community Information Line.
- Indirectly via a local or state government agency.

Following receipt of any traffic-related complaint, Austral will implement the following procedure.

1. The complaint will be reviewed by the Environmental Officer or their delegate to record the nature, date and time of the incident initiating the complaint.
2. Should the review indicate that no breach by Austral of traffic-related conditions in the Project Approval has occurred, the Environmental Officer will continue to consult with the complainant in relation to managing traffic associated with the Quarry.

3. Should the review indicate a non-compliance with traffic-related conditions, the Environmental Officer will notify the DPE and Council in accordance with the procedures identified. In addition, the Environmental Officer will continue to consult with the complainant, as required, in relation to the complaint.
4. In the event that multiple complaints are received from the same person(s) and Austral can demonstrate:
 - there is documented evidence of compliance with traffic conditions; and
 - there is documented evidence of a genuine attempt by Austral to discuss the issue and seek a resolution with the complainant; then
 - no further monitoring will be undertaken.

All complaints relating to clay/shale transportation would be recorded using a proforma complaints book developed for all sites operated by Austral Bricks throughout NSW.

11. CORRECTIVE AND PREVENTATIVE ACTIONS

In the event that a non-compliance with transport conditions in PA 08_0212 is identified, the non-compliance will be reviewed to determine the likely cause(s). The review will seek to determine:

- whether the non-compliance was attributed to a truck travelling between the Quarry and the Bowral Brick Plant;
- the primary cause of the non-compliance;
- any contributing factors which led to the non-compliance;
- whether appropriate controls were implemented to avoid the non-compliance; and
- corrective and preventative measures that may be implemented to prevent a recurrence of the non-compliance.

Corrective and/or preventative actions will be assigned to relevant personnel of either Austral or its contractor. Actions will be communicated internally through toolbox talks and outstanding actions will be monitored for their effectiveness upon completion.

12. INCIDENT REPORTING

In the event that a non-compliance with transport-related conditions is identified, each non-compliance will be reported in the *Annual Review*.

13. PUBLICATION OF MONITORING INFORMATION

Austral will include a summary of transport movements in each *Annual Review*, a copy of which will be placed on Austral's website following its acceptance by the Department of Planning and Environment.

The Environmental Officer will be responsible for assembly of all relevant information.

14. PLAN REVIEW

In accordance with *PA Condition 5(5)*, this *Transport Management Plan* will be reviewed and, if required, revised within 3 months of:

- the submission of an annual review under *PA Condition 5(4)*;
- the submission of an incident report under *PA Condition 5(7)*;
- the submission of an audit report under *PA Condition 5(9)*; and
- any modification to the conditions of PA08_0212.

The Environmental Officer will be responsible for the review of this Plan.

This page has intentionally been left blank

Appendix 1

Driver's Code of Conduct

(Total No. of pages including blank pages = 4)

This page has intentionally been left blank



CODE OF CONDUCT FOR TRUCK DRIVERS

Be Professional – It's Your Job!

The Austral Brick Company Pty Limited (Austral) and our contracted truck drivers have a responsibility to ensure trucks transport materials from the New Berrima Clay/Shale Quarry to the Bowral Brick Plant in a safe and responsible manner at all times.

It is a requirement of your employment with Austral that the following requirements are undertaken at all times.

1. General Responsibilities

Please do:	Please don't:
<ul style="list-style-type: none"> be medically fit to drive at all times – please inform Austral management if you have any medical condition which may affect your ability to drive; drive safely and show full consideration to other motorists and road users; wear a seat belt at all times whilst the vehicle is in motion; and obey all legal speed limits. 	<ul style="list-style-type: none"> use a mobile phone at any time whilst the vehicle is in motion unless it's a hands free unit; drive whilst under the influence of any drugs or any medication which may affect your ability to drive; and consume any alcohol before or during your journeys (or at any time beforehand on the same day).

2. Within New Berrima Clay/Shale Quarry

Please do:	Please don't:
<ul style="list-style-type: none"> drive in the centre of the sealed section of the quarry access road and avoid the road edges; ensure you have the following Personal Protective Equipment before you exit your vehicle within the Quarry – hard hat, safety boots, safety glasses and hi-visibility clothing or vest; and report any incident/near miss to Austral management. 	<ul style="list-style-type: none"> use exhaust brakes at any section of the quarry access road; exceed 40kph on the quarry access road and 10kph within the quarry; throw any rubbish from the truck cabin; and climb onto the trailer.

3. Travelling from New Berrima Clay/Shale Quarry to Bowral Brick Plant

Please do:	Please don't:
<ul style="list-style-type: none"> ensure tailgates are fully fastened when in transit; drive carefully and considerately to limit impacts on local residents and homes along the transport route; ensure headlights are used at times of poor visibility; retain all rubbish in the truck cabin and dispose of only at the Bowral Brick Plant; and a full walk-around your truck to check all running boards are clean and the dust cover is fully extended. 	<ul style="list-style-type: none"> exceed sign-posted speed limits on the transport route; cut the corner at the corner of Cavendish Street and Kirkham Road; stop or park at any time on the roadside unless required for an emergency; use exhaust brakes within the 60kph and 50kph zones; approach the quarry access road earlier than 7:00am on approved work days; and leave the Quarry any later than 5:00pm on approved work days.

CODE OF CONDUCT FOR TRUCK DRIVERS

Be Professional – It's Your Job!



4. Chain of Responsibility

Chain of Responsibility legislation dictates it is the driver's responsibility to ensure you:

- take the required rest breaks;
- record working and rest hours;
- ensure your vehicle does not exceed mass limits;
- ensure your vehicle does not exceed dimension limits;
- appropriately cover your load by ground controlled methods (i.e. automatic tarp);
- do not exceed the legal speed limits; and
- do not tamper with, or remove any equipment required to be fitted to the vehicle.

5. Complaints

Local residents, motorists and/or other road users are entitled to phone 1800 635 620 or 4861 3031 to lodge complaints or compliments about your vehicle or on-road driving behaviour. If any complaint of this nature is received, it will be investigated by Austral management and the complainant will be informed about the actions taken.

6. Disciplinary Action

You will face disciplinary action if you fail to meet the requirements in this Code of Conduct or a confirmed community complaint is received regarding your vehicle or on-road driving behaviour.

The disciplinary procedure will involve the following.

Three Complaints and You're Out

- The first confirmed complaint will be verbally brought to your attention.
- The second confirmed complaint will be provided to you in writing.
- Dismissal from Austral will occur if a third confirmed complaint occurs.

7. Agreement to Code

I agree to abide with this Code of Conduct	Authorisation by Austral Quarry Manager
Signed:	Signed:
Name (Print):	Name (Print):
Date:	Date: