

Baguette and Louvre Systems

What's inside

- 1 – Safe Working Instructions p⁰⁵
- 2 – System Description p⁰⁹
- 3 – Components p¹⁹
- 4 – Technical Specifications p²⁷
- 5 – Installation p³⁵
- 6 – System Design p⁴³
- 7 – Disassembly Process p⁵¹
- 8 – Maintenance p⁵⁵
- 9 – Get in Touch p⁶³

A BRAND OF

BRICKWORKS



Safe Working Instructions

1

Site Preparation

Reworking Baguettes & Louvres

Silica dust can be liberated from the Terraçade Baguettes and Louvres when they are reworked. Chronic inhalation of crystalline silica has been associated with impairment of lung function. Please refer to SDS for Terraçade, which is available from the Terraçade website (www.terraçade.com.au) for further information. Care should be taken when reworking Terraçade Baguettes and Louvres to maintain the exposure to crystalline silica below the Exposure Standard prescribed by Safe Work Australia (0.05 mg/m³).

Safe working procedures should include:

- Utilising a wet saw when cutting or reworking. Contact the saw manufacturer for further details.
- Wearing appropriate personal protective equipment, such as approved dust mask and safety goggles, when utilising power tools or abrasive hand tools on the Baguettes and Louvres.
- Ensuring that dust is disposed of during clean up and disposal appropriately, by either wetting or vacuuming. (Refer to the below diagram).

Using Brick/Tile Saw or Power Saws

- Ensure that adequate personal protective equipment, such as approved safety glasses, gloves, dust masks and hearing protection are worn.
- Use a wet saw to cut or ensure that adequate ventilation or dust extraction equipment is available if dry cutting is used.

Handling

- Care should be taken when handling metal inserts and brackets to avoid cuts and abrasions. The use of appropriate gloves may be of benefit. Extra care should be taken when handling cut pieces of Baguettes and Louvres.
- It is recommended that large packs of metal inserts should be broken up, so that they may be handled individually.
- Ensure clear passage when moving the metal inserts due to their size. Also allow for adequate storage of the metal inserts to avoid trip hazards.
- Take care when handling cut Baguettes and Louvre to avoid cuts or abrasions from sharp surfaces.
- Consider manual handling issues when lifting Baguettes and Louvres.

Surrounding Materials:

- All materials should be stored to avoid damage.
- Protect Baguettes, Louvres, inserts, brackets, and fixings from exposure to rain, water, or chemicals during storage.
- Ensure that pressure water jet cleaning of any surrounding surfaces is conducted prior to the installation of the Baguettes or Louvres.
- Protect aluminium components during chemical cleaning of nearby materials especially acid cleaning.

Recommended Safety Protection



Face Masks P1 or P2 type approved to the relevant Australian Standards.



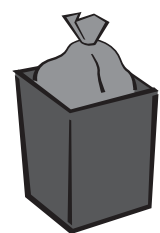
Safety Goggles approved to the relevant Australian Standards.



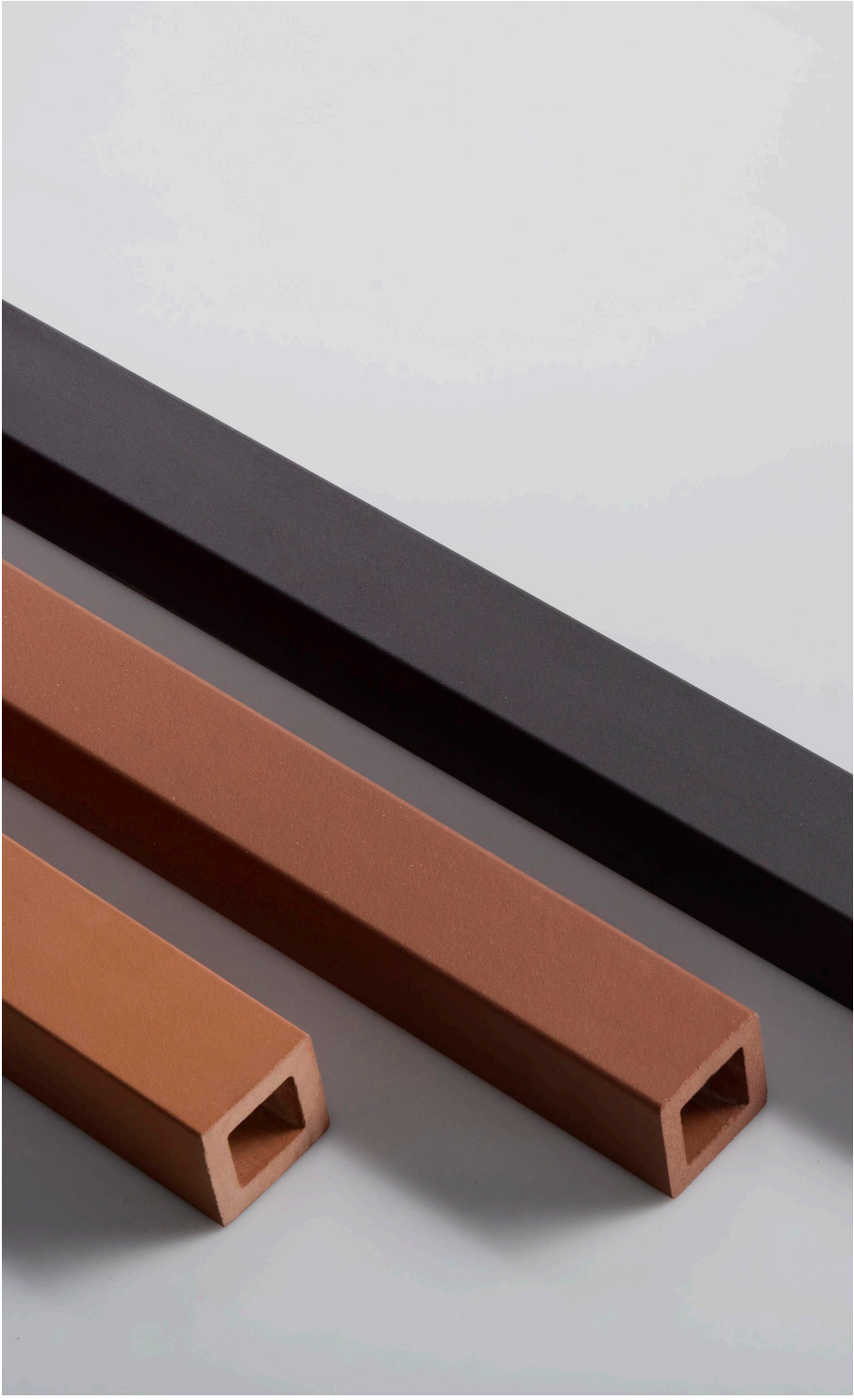
Hearing Protection approved to the relevant Australian Standards.



Clean up, wet down or vaccum



Dispose of dust contamination



System Description

2

Overview

A stylish privacy screen and ventilation system

Terraçade Baguettes and Louvres can be used for both practical and decorative applications on building façades. The system can be used to provide privacy screening, permanent ventilation and shading or simply to apply a stylish finish to any residential, commercial, or industrial project.

The product can provide screening on multi-residential balconies, across windows on office buildings or act as a decorative element for front offices in industrial complexes. Terraçade Baguettes and Louvres come in a range of seven stylish natural colours.

The composition of the raw materials as well as the firing process may cause each batch to differ. The resulting colour variation is inherent in the process and part of the appeal of our natural products. The product images in our brochures give a general indication of colour for your preliminary selection.

We recommend you also view current product samples

System Assembly

The Terraçade Baguette and Louvre system is easily installed as the Baguettes and Louvres are attached securely onto the metal insert. The system can be installed onto timber or steel framed walls.

The Terraçade Baguette and Louvre system is comprised of:

- Designed for purpose aluminium alloy metal insert
- Ceramic Baguettes and Louvres designed to fit securely onto the metal insert
- Aluminium alloy middle and end brackets

Exposure Grade

Terraçade Baguettes and Louvres are classified as exposure grade so they can be used in all environments including severe marine environments and areas subject to heavy industrial pollution.

Tested Performance

The performance of the Terraçade Baguettes and Louvres has been extensively tested in Austral Bricks' NATA accredited laboratory and in independent NATA accredited laboratories.





Features and Benefits

1.

Stylish finish

Sleek and modern, Terraçade creates a unique, stylish finish.

2.

Range of colours

A huge range to suit your style.

3.

Designed to last

Colours that will never fade and a product warranted for 100 years.

4.

Fire resistant

The Terraçade system is non-combustible.

5.

Exposure grade

Certified as suitable for use in marine environments.

6.

Weather resistant

Designed to withstand all weather conditions.

7.

Strong and durable

Terraçade is designed to resist impact.

8.

Various applications

Can be used for residential, commercial, or industrial projects.

9.

Natural

Terraçade is made from natural clay which is kiln fired.

10.

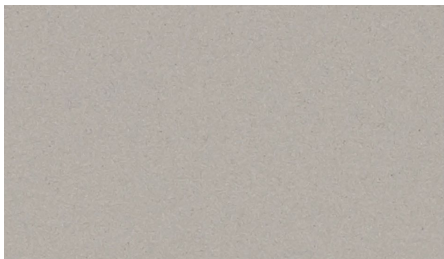
Simple installation

The Terraçade system is fast and simple to install.

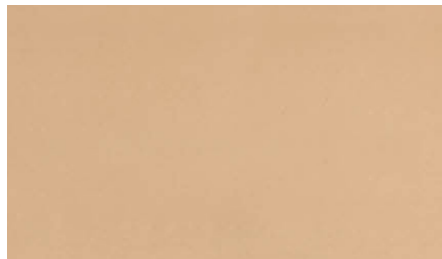
Baguettes

Used for both practical and decorative applications on building façades, Terraçade Baguettes provide privacy screening, permanent ventilation and shading.

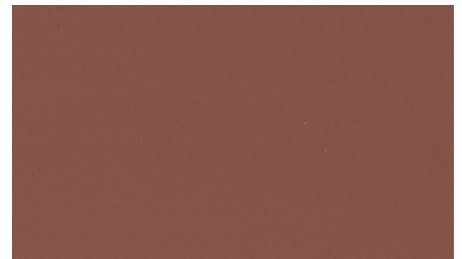
Colours



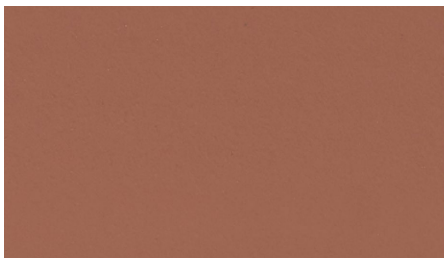
Bunbury/Raglan



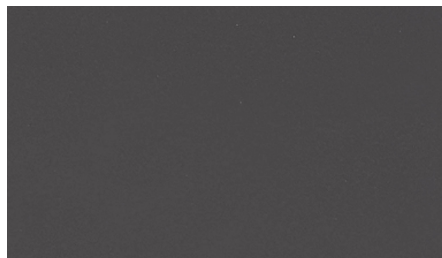
Kalbarri



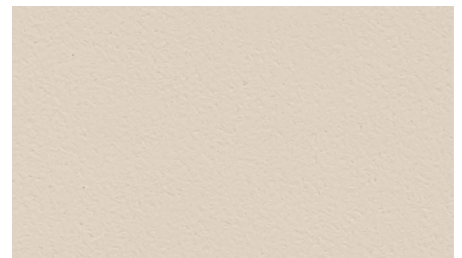
Kimberly/Tanami



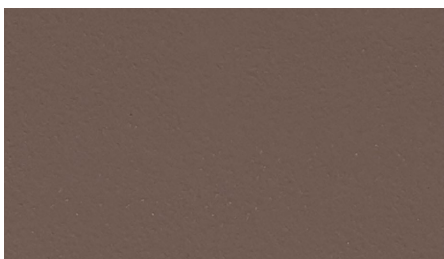
Pilbara/Gibson



Tennant/Simpson



Whitehaven/Sand



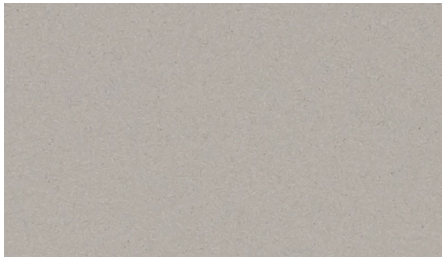
Sturt



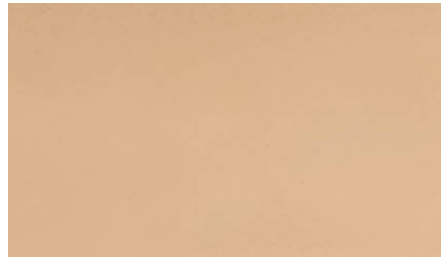
Louvres

Designed to integrate perfectly with the Terraçade TN, XP, and Baguette façade systems, Terraçade Louvres are the ideal solution for architectural screening and sunshades.

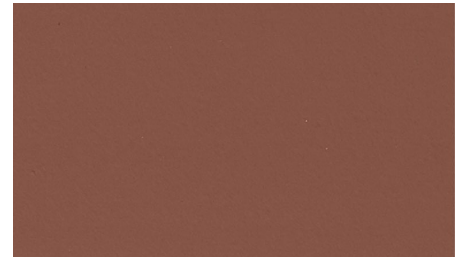
Colours



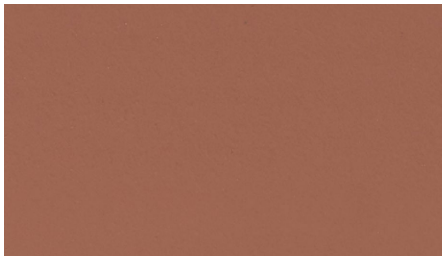
Bunbury/Raglan



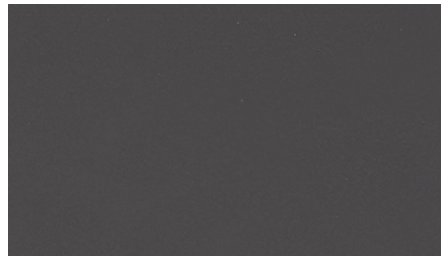
Kalbarri



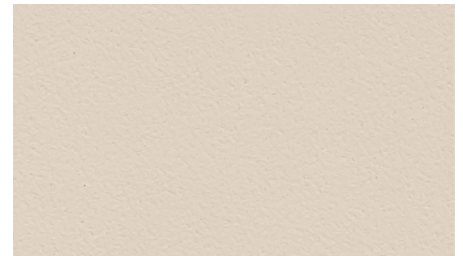
Kimberly/Tanami



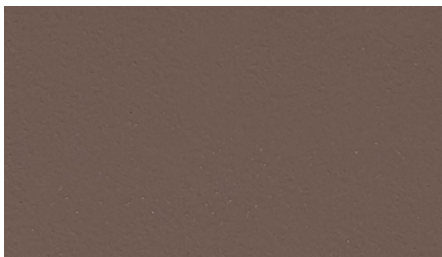
Pilbara/Gibson



Tennant/Simpson



Whitehaven/Sand



Sturt

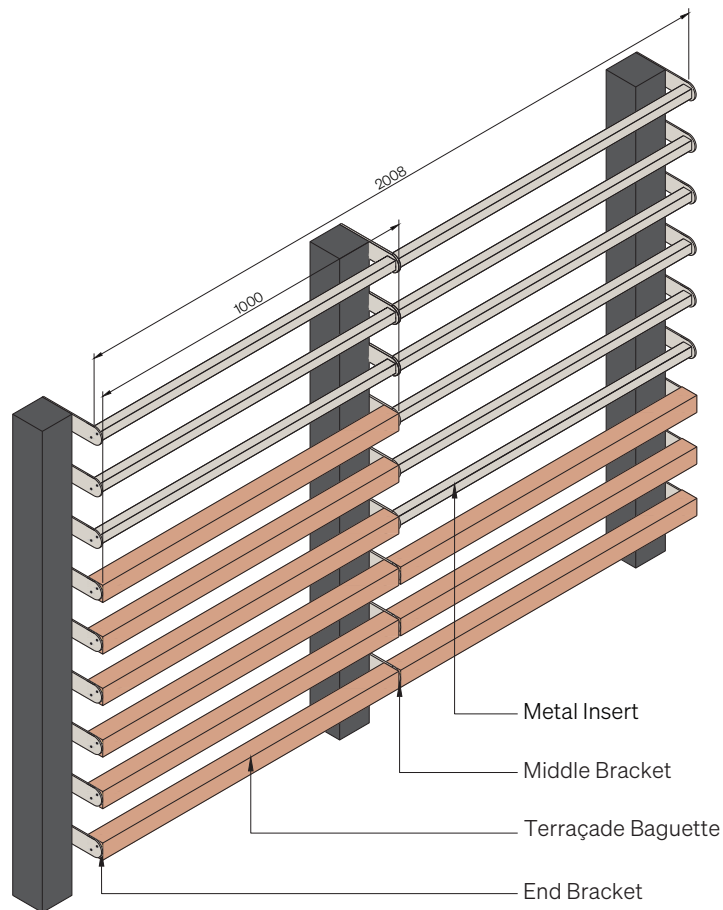




Components

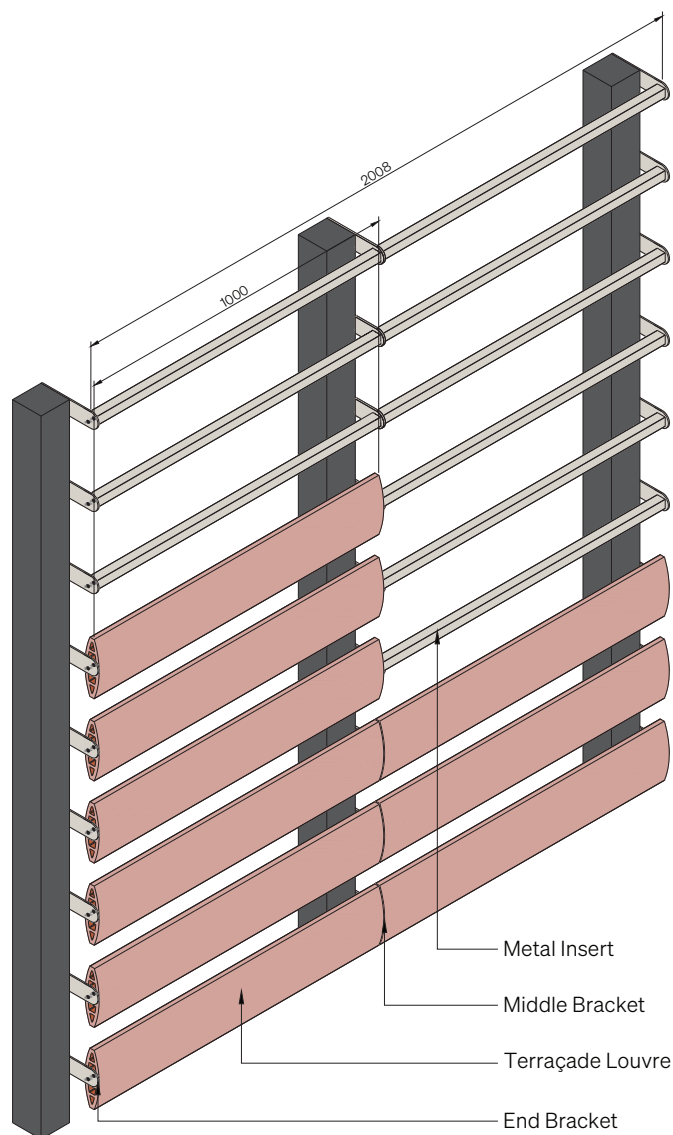
3

Baguette System Overview



© Copyright 2022. This drawing is indicative only and allowances should be made for material and onsite variations. The component and assembly details demonstrate a design methodology only. Assembly and documentation drawings should only be undertaken after reference and compliance with the relevant component's technical data. The diagram is not to scale. For more tailored solutions to suit individual applications, please contact Brickworks Building Products. Brickworks Building Products reserves the right to add, alter or delete components without prior notice.

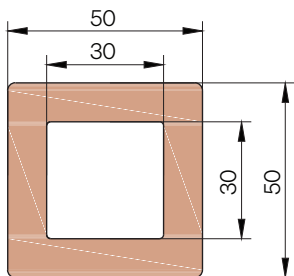
Louvre System Overview



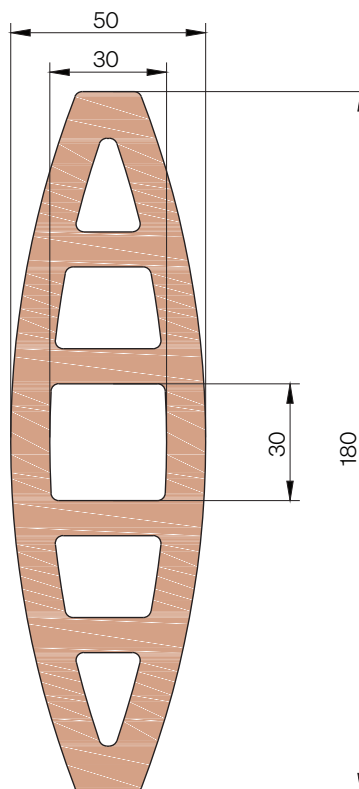
© Copyright 2022. This drawing is indicative only and allowances should be made for material and onsite variations. The component and assembly details demonstrate a design methodology only. Assembly and documentation drawings should only be undertaken after reference and compliance with the relevant component's technical data. The diagram is not to scale. For more tailored solutions to suit individual applications, please contact Brickworks Building Products. Brickworks Building Products reserves the right to add, alter or delete components without prior notice.

Profiles

Terraçade Baguette Profile



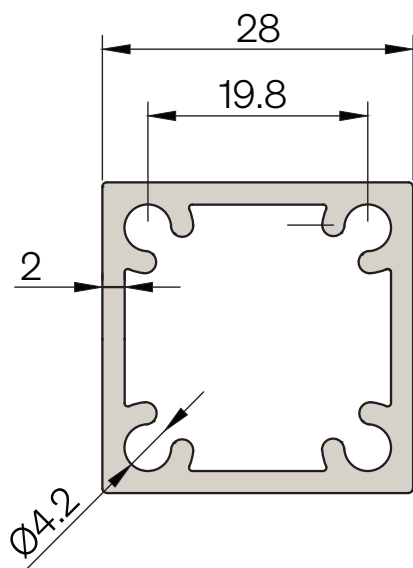
Terraçade Louvre Profile



© Copyright 2022. This drawing is indicative only and allowances should be made for material and onsite variations. The component and assembly details demonstrate a design methodology only. Assembly and documentation drawings should only be undertaken after reference and compliance with the relevant component's technical data. The diagram is not to scale. For more tailored solutions to suit individual applications, please contact Brickworks Building Products. Brickworks Building Products reserves the right to add, alter or delete components without prior notice.

Profiles

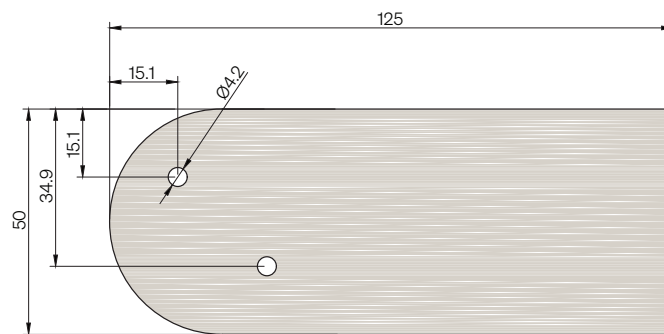
Metal Insert Profile



© Copyright 2022. This drawing is indicative only and allowances should be made for material and onsite variations. The component and assembly details demonstrate a design methodology only. Assembly and documentation drawings should only be undertaken after reference and compliance with the relevant component's technical data. The diagram is not to scale. For more tailored solutions to suit individual applications, please contact Brickworks Building Products. Brickworks Building Products reserves the right to add, alter or delete components without prior notice.

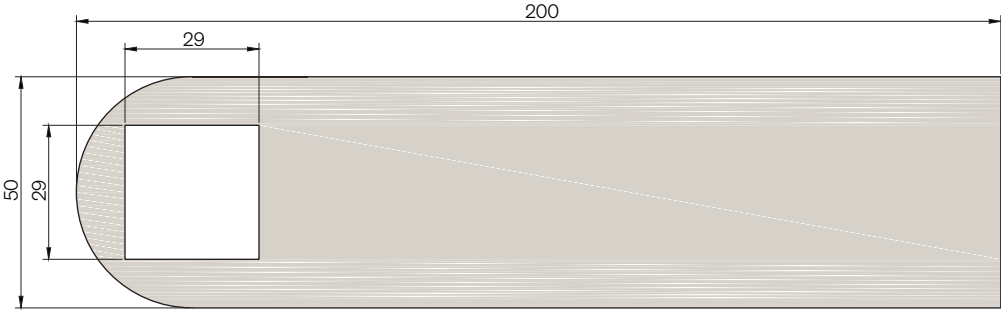
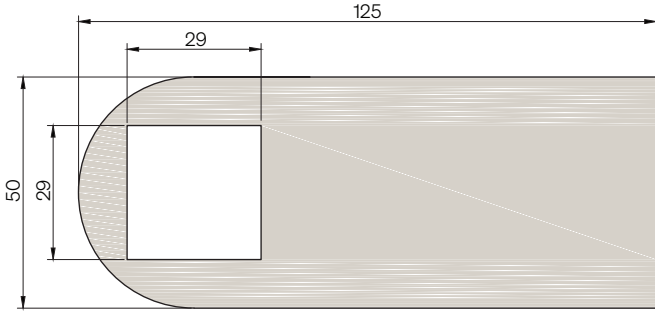
System Brackets

End Bracket

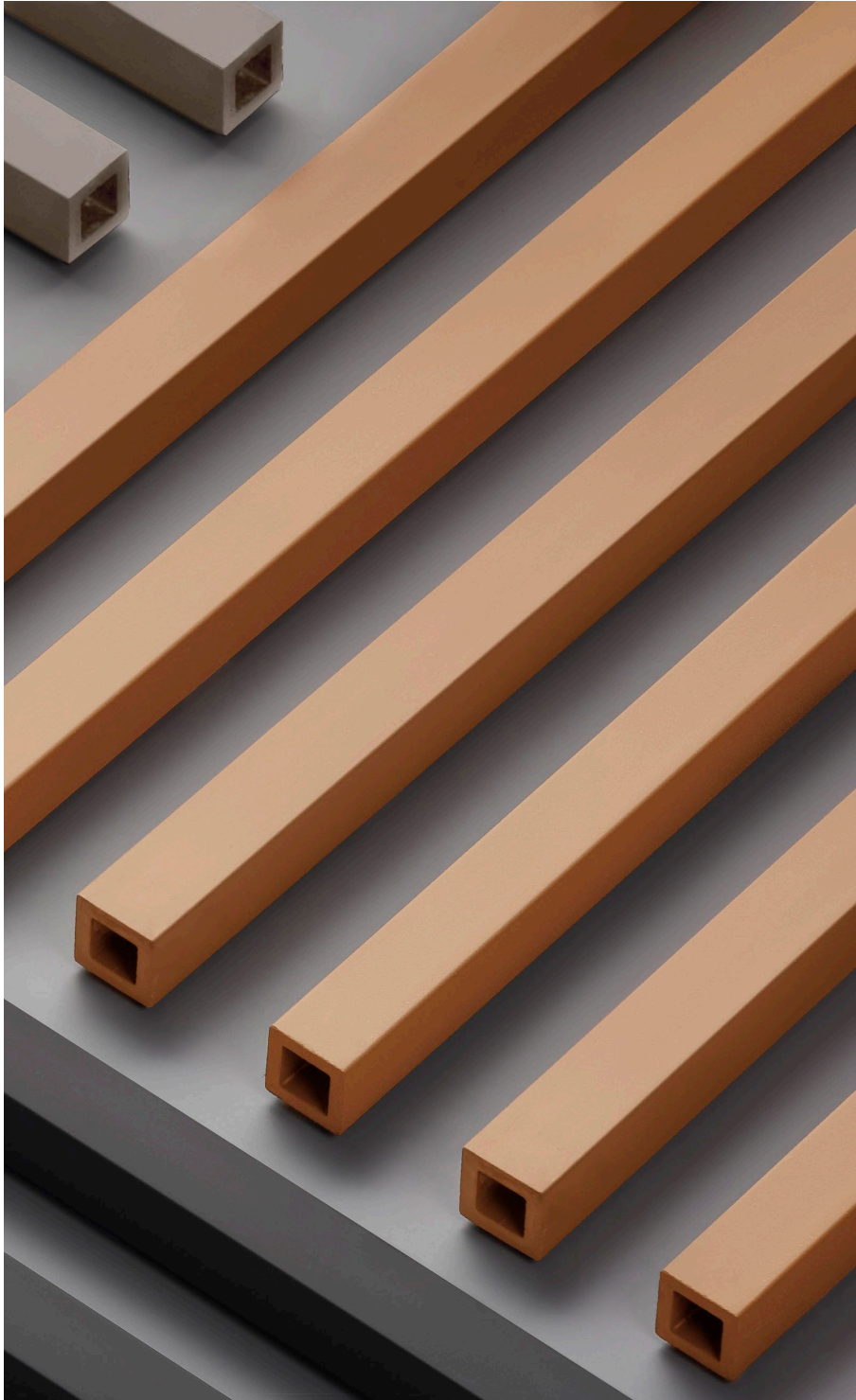


© Copyright 2022. This drawing is indicative only and allowances should be made for material and onsite variations. The component and assembly details demonstrate a design methodology only. Assembly and documentation drawings should only be undertaken after reference and compliance with the relevant component's technical data. The diagram is not to scale. For more tailored solutions to suit individual applications, please contact Brickworks Building Products. Brickworks Building Products reserves the right to add, alter or delete components without prior notice.

Middle Bracket



© Copyright 2022. This drawing is indicative only and allowances should be made for material and onsite variations. The component and assembly details demonstrate a design methodology only. Assembly and documentation drawings should only be undertaken after reference and compliance with the relevant component's technical data. The diagram is not to scale. For more tailored solutions to suit individual applications, please contact Brickworks Building Products. Brickworks Building Products reserves the right to add, alter or delete components without prior notice.



Technical Specifications

4

Material Schedule and Properties

Table 1 - Materials list used in the Terraçade Baguette and Louvre System

Component	Material
Terraçade Baguette	Fired extruded clay units
Terraçade Louvre	Fired extruded clay units
Metal Insert	Aluminium Alloy 6061-T6 and are produced to Australian Standard AS 1866 (Aluminium and Aluminium Alloys – Extruded Rod, Bar, Solid and Hollow Shapes)
Middle Bracket	Aluminium Alloy 6063-T6
End Bracket	Aluminium Alloy 6063-T6

Baguette and Louvre Properties:

Extensive testing is carried out in Brickworks' NATA accredited laboratory, and in independent NATA accredited laboratories.

System Properties:

Table 2 Baguette and Louvre System Properties

Property	Baguette	Louvre
Nominal Dimensions (L x W x H)	1000 × 50 × 50 mm	1000 × 180 × 50 mm
Weight/unit	~3.5 kg	~10.0 kg
Section Area	1598 mm ²	4534 mm ²
Major Axis Moment of Inertia (I ₁₁)	450596 mm ⁴	10651900 mm ⁴
Major Axis Section Modulus (Z ₁₁)	18023.8 mm ³	118354 mm ³
Minor Axis Moment of Inertia (I ₂₂)	450596 mm ⁴	883888 mm ⁴
Minor Axis Section Modulus (Z ₂₂)	18023.8 mm ³	35355 mm ³

Material Properties:

Table 3 Baguette and Louvre Material Properties

Property	Baguette	Louvre
Average Cold Water Absorption	< 7%	< 7%
Factored Modulus of Rupture	11.74 MPa	11.74 MPa
Average Breaking Load	1.90 kN	3.26 kN
Average Breaking Strength	37.22 kN	17.35 kN
Average Modulus of Rupture	25.83 MPa	24.27 MPa
Average Elastic Modulus	19000 MPa	13000 MPa
Moisture Expansion	0.001%	0.001%
Coefficient of Thermal Expansion	$\sim 4.8 \times 10^{-6} \text{ (}^\circ\text{C)}^{-1}$	$\sim 4.8 \times 10^{-6} \text{ (}^\circ\text{C)}^{-1}$
Durability Class	Exposure Grade	Exposure Grade
Fire Rating	Non-combustible	Non-combustible

Aluminium Insert and Brackets

Table 4 System Properties

Property	Nominal Dimensions (L x W)	Thickness	Coefficient of Thermal Expansion ($10^{-6}/^\circ\text{C}$)	E (GPa)
Metal Insert	2000 x 28 mm	2 mm	23	70
Middle Bracket	120/200 x 50 mm	6 mm	23	70
End Bracket	120/200 x 50 mm	4 mm	23	70

Material Schedule and Properties

Fasteners

Substrate	Fixing Type	Size	Recommended Min. Embedment	Grade
Timber	Type 17 Hex Head Screw	#10	25 mm Min. distance from edge 50 mm	SS 316
Steel	Pan Head Self Drilling Screw	#10	Min. thickness of base plate 1.15 mm	SS 316
End Bracket to Metal Insert	Pan Head Self Drilling Screw	#10	12 mm	SS 316

The above table is a guide to anchorage selection and does not alleviate the installers' responsibility to ensure the anchorage chosen is fit for purpose. Specifiers should review the maximum reaction section of the load span tables and review the design accordingly. If in doubt, advice should be sought by the product design engineers.

System Performance

Supply Statement

Structural adequacy analysis on the Terraçade Baguette and Louvre system has been received from Rickard Engineering in accordance with relevant Australian Codes of Practice and Standards.

Structural Analysis

Allowable design loads are dependent on the configuration of the system. Standard configurations of either horizontal or vertical have been considered. The critical loading as per configuration were determined as follows:

- For horizontal installation - a 1.1 kN unfactored maintenance point loading applied at the midspan
- For vertical installation - a 0.5 kN unfactored impact point loading applied at the midspan

From these critical loading values, span tables were created based on different Baguette or Louvre installation angles. These span tables are located on the following page.

The Terraçade Baguette and Louvre system may be used outside of these configurations if deemed acceptable by a suitably qualified engineer.

Some considerations include:

- If the Terraçade Baguette and Louvre system is deemed practically inaccessible
- If signage or warning labels are present to indicate no standing and climbing
- If there is insufficient spacing to allow a foot or hand to load the Terraçade Baguette and Louvre system
- Use of building maintenance units or window cleaning operations

Please note that joining multiple spans of a section is required to have a middle bracket at each discontinuity and all sections are required to have the metal insert (stiffener) inserted continuously between supports.

The stiffener will provide minimal rigidity and should be used as a safety mechanism in the unlikely event of failure. In the event of failure, the stiffener prevents the Baguette or Louvre from falling from a building.

Span Tables

As stated above, a maximum load of 1.1 kN was assigned for the Baguettes and Louvres if installed horizontally, and 0.5 kN if installed vertically. Baguettes and Louvres may be used outside these configurations if deemed suitable by a suitably qualified engineer.

The span lengths in the tables below represent a single Baguette or Louvre between two supports. This support is either an end or middle bracket. When joining two Baguette or Louvre on the same metal insert, a middle bracket must be installed between each span length. If your required span length is longer than the supplied Baguettes and Louvres, please contact Brickworks Building Products. Custom lengths of up to 1.8 m can be provided for larger projects.

Terraçade Baguette

The table below outlines the allowable installation spans for different load cases and installation angles. The maximum allowable load has been provided for each span length and angle.

The recommended installation orientation has also been provided using the nominated load criteria.

Table 5 Terraçade Baguette Span Table

It should be noted that Baguettes subject to no point loading (self-weight only) may be used at both installation angles with a span length of up to 1.8 m.

Recommended Not recommended

Loading Case	Subject to Maintenance/ Climbing Load (max. 1.1 kN)		Subject to Impact Load Only (max. 0.5 kN)		Maximum Allowable Point Load (kN)		Recommended Installation Orientation							
	0°	45°	0°	45°	0°	45°	0°	45°						
Installation Angle														
Span (m)	0.5	0.6	0.7	0.8	0.9	1.0	1.1	1.2	1.3	1.4	1.5	1.6	1.7	1.8
	Y	N	Y	Y	0.13	0.80	Horizontal or Vertical	Vertical						
	Y	N	Y	Y	0.94	0.67	Horizontal or Vertical	Vertical						
	Y	N	Y	Y	0.81	0.57	Horizontal or Vertical	Vertical						
	N	N	Y	Y	0.71	0.50	Vertical	Vertical						
	N	N	Y	N	0.63	0.44	Vertical	-						
	N	N	Y	N	0.56	0.40	Vertical	-						
	N	N	Y	N	0.51	0.36	Vertical	-						
	N	N	Y	N	0.47	0.33	Vertical	-						
	N	N	Y	N	0.43	0.31	Vertical	-						
	N	N	N	N	0.40	0.29	-	-						
	N	N	N	N	0.38	0.27	-	-						
	N	N	N	N	0.35	0.25	-	-						
	N	N	N	N	0.33	0.23	-	-						
	N	N	N	N	0.31	0.22	-	-						

Terraçade Louvre









The table below outlines the allowable installation spans for different load cases and installation angles. The maximum allowable load has been provided for each span length and angle.

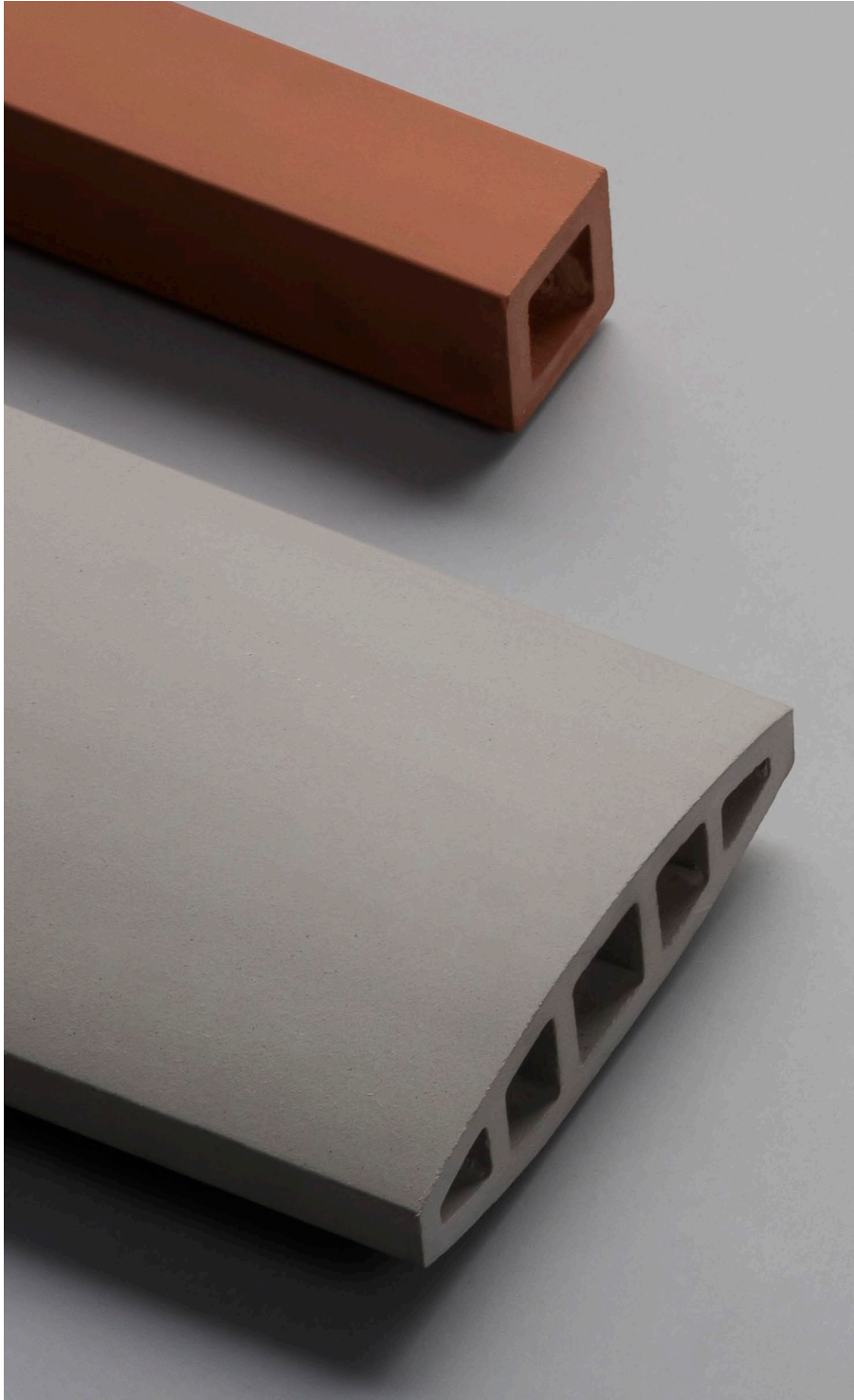
The recommended installation orientation has also been provided using the nominated load criteria.

Table 6 Terraçade Louvre Span Table

It should be noted that Louvres subject to no point loading (self-weight only) may be used at both installation angles with a span length of up to 1.8 m.

Recommended Not recommended

Loading Case	Subject to Maintenance/ Climbing Load (max. 1.1 kN)		Subject to Impact Load Only (max. 0.5 kN)		Maximum Allowable Point Load (kN)		Recommended Installation Orientation		
	0°	90°	0°	90°	0°	90°	0°	90°	
Installation Angle									
Span (m)	0.5	Y	Y	Y	Y	2.21	7.41	Horizontal or Vertical	Horizontal or Vertical
	0.6	Y	Y	Y	Y	1.84	6.18	Horizontal or Vertical	Horizontal or Vertical
	0.7	Y	Y	Y	Y	1.58	5.29	Horizontal or Vertical	Horizontal or Vertical
	0.8	Y	Y	Y	Y	1.38	4.63	Horizontal or Vertical	Horizontal or Vertical
	0.9	Y	Y	Y	Y	1.23	4.12	Horizontal or Vertical	Horizontal or Vertical
	1.0	Y	Y	Y	Y	1.11	3.71	Horizontal or Vertical	Horizontal or Vertical
	1.1	Y	Y	Y	Y	1.01	3.37	Horizontal or Vertical	Horizontal or Vertical
	1.2	N	Y	Y	Y	0.92	3.09	Vertical	Horizontal or Vertical
	1.3	N	Y	Y	Y	0.85	2.85	Vertical	Horizontal or Vertical
	1.4	N	Y	Y	Y	0.79	2.65	Vertical	Horizontal or Vertical
	1.5	N	Y	Y	Y	0.74	2.47	Vertical	Horizontal or Vertical
	1.6	N	Y	Y	Y	0.69	2.32	Vertical	Horizontal or Vertical
1.7	N	Y	Y	Y	0.65	2.18	Vertical	Horizontal or Vertical	
1.8	N	Y	Y	Y	0.61	2.06	Vertical	Horizontal or Vertical	



Installation

5

General Installation Procedure

The Baguette and Louvre system can be installed in two standard ways.

- Direct Fix Installation – involves directly fixing the brackets to the wall with fasteners
- L-Bracket Fix Installation – involves fixing the brackets to the wall using L-brackets

Preparation

1. Ensure that adequate structural members are available to fasten the system to. Design documentation should accommodate these requirements.
2. Determine the set-out of the Baguettes or Louvres, based upon the design requirements. They could be set from the base, the top or from any important structural features.
3. Determine the quantities of the components required for a particular design. Contact a Brickworks Building Products representative if you require assistance.

4. Obtain the correct fasteners for the design.
5. Ensure that the installers are aware that irregularities of shape in backup wall must be packed out or accommodated for, to ensure that the system is installed correctly.

Examination of Substructure

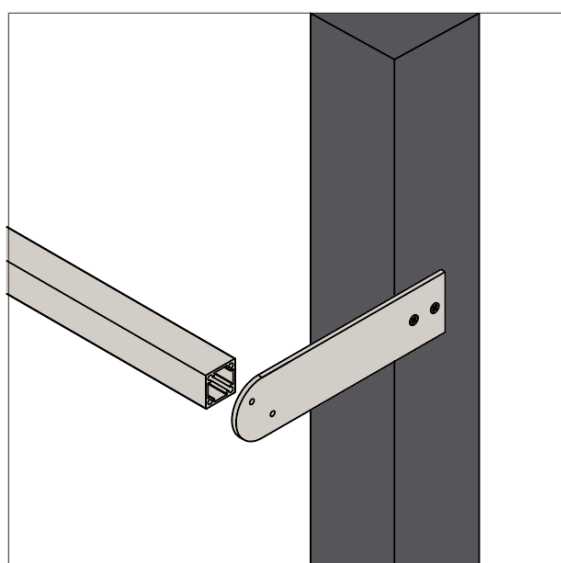
6. The maximum horizontal or vertical deviations of a surface from a plane surface (bow) in any 2 m length are:
 - a. Structural Tolerance - 5 mm
 - b. Non - Structural Framework Tolerance- 3 mm
7. Examine the back-up wall for compliance with design requirements.

Set Out and Coordination

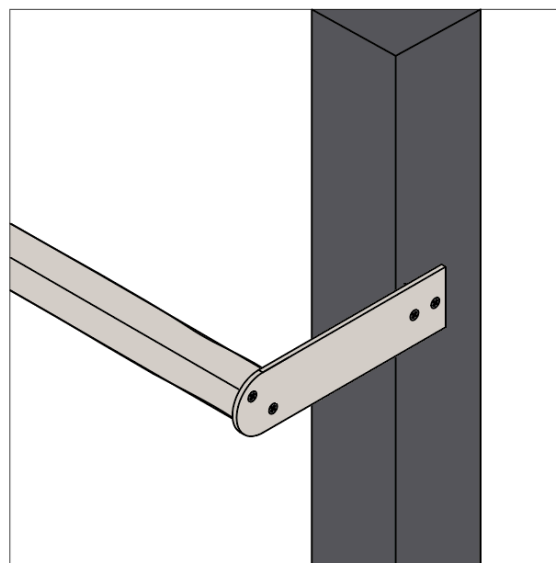
8. Establish and coordinate set-out lines, following design requirements for the set-out of the Baguettes or Louvres. For example, the design may require that the Baguette or Louvre module is spaced from an important feature or designed to reduce cut Baguettes or Louvres around a window.
9. Ensure that adequate support structure are available to comply with the span configurations specified.

Direct Fix Installation

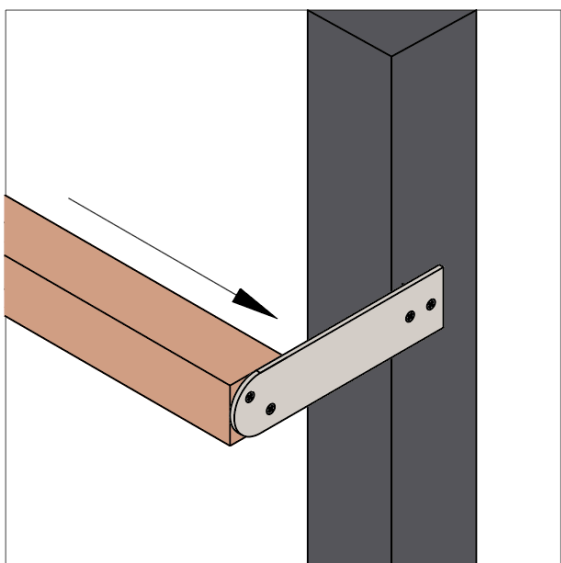
The following diagrams show the simple steps involved in installing a Baguette or Louvre system using the direct fix method.



1. Fix end bracket to wall

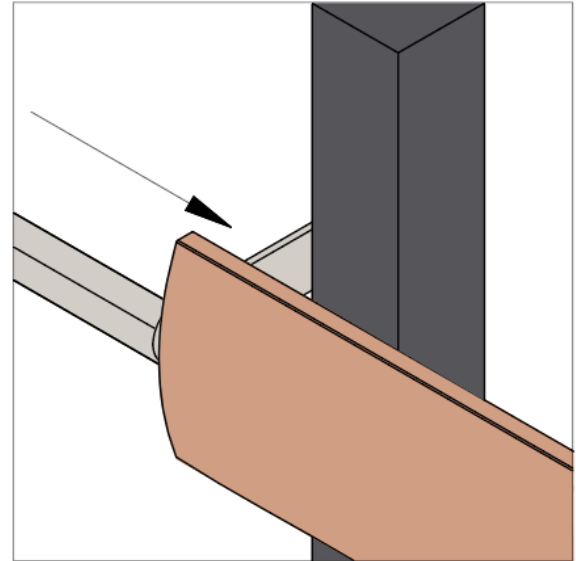
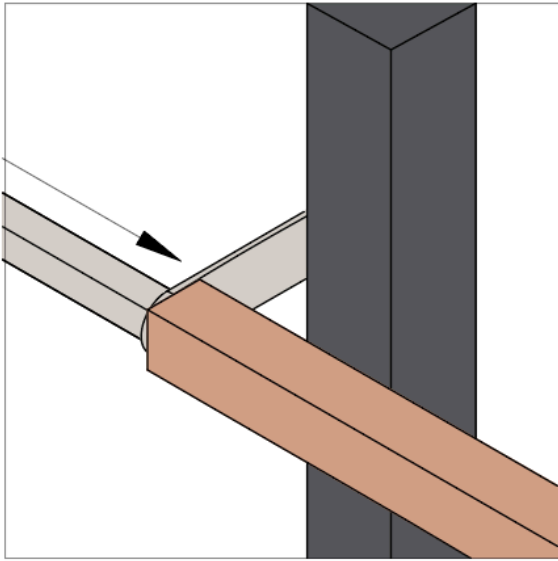


2. Fix end bracket to metal insert

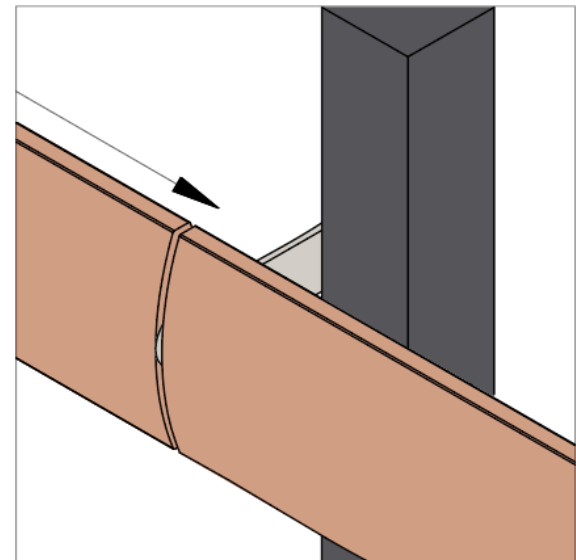
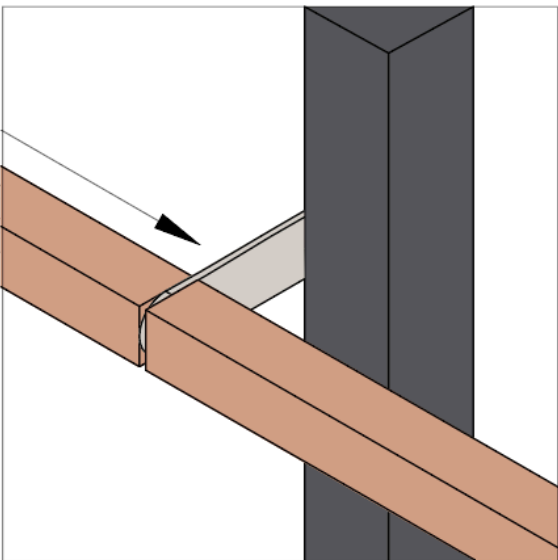


3. Slide Baguette or Louvre over metal insert

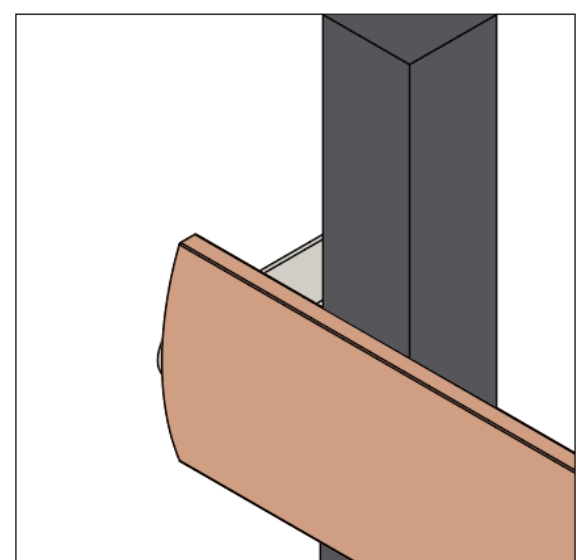
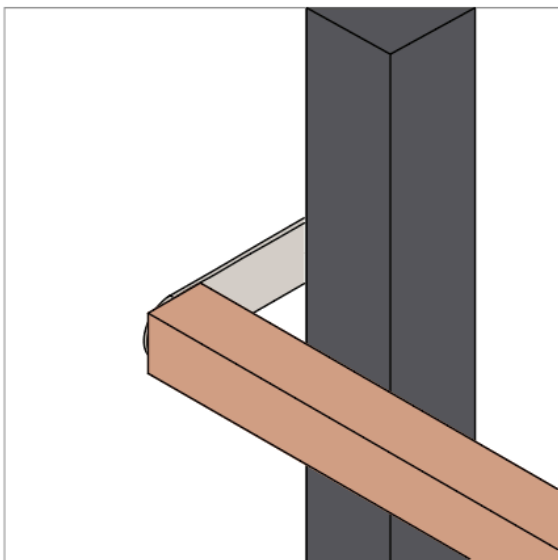
General Installation Procedure



4. Slide middle bracket over metal insert and fix to wall



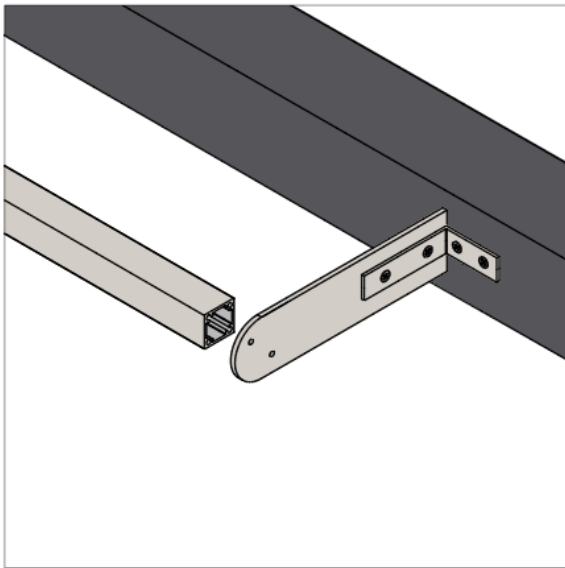
5. Slide next Baguette or Louvre over metal insert



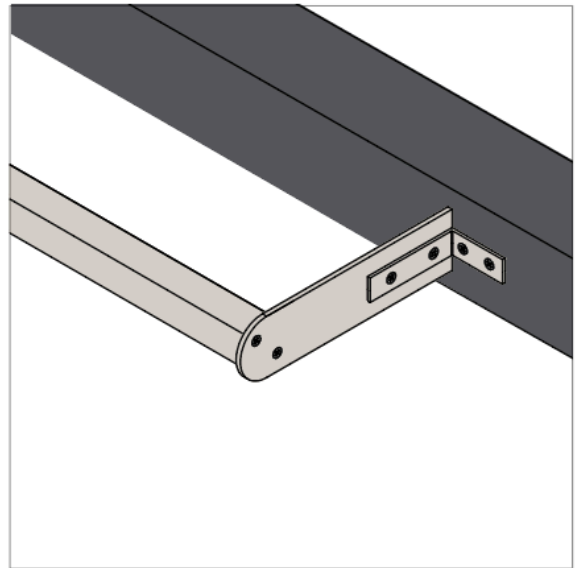
6. Fix end bracket to metal insert and fix to wall

L-Bracket Installation

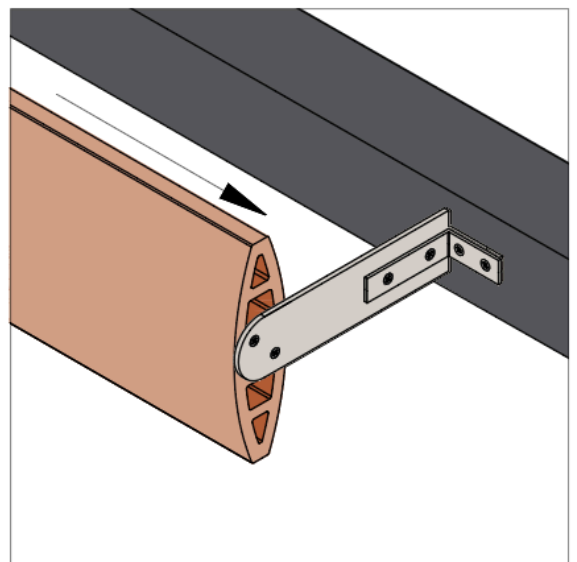
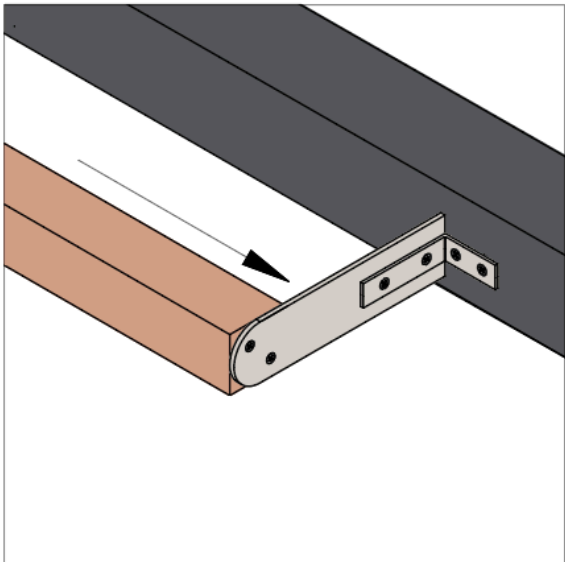
The following diagrams show the simple steps involved in installing a Baguette or Louvre system using the L-bracket fixing method.



1. Fix end bracket to wall with L-bracket

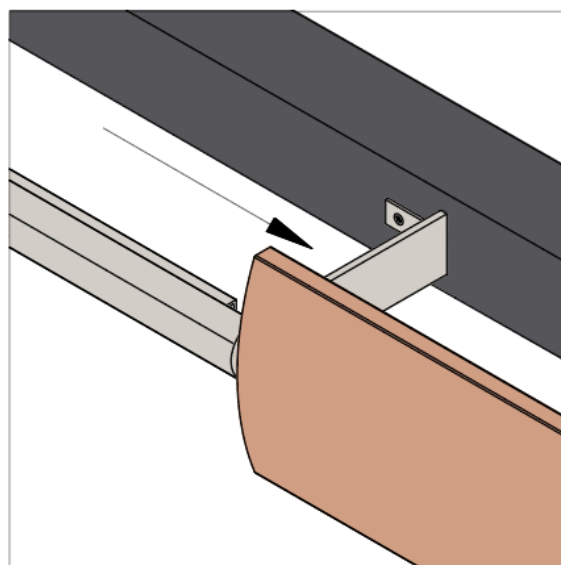
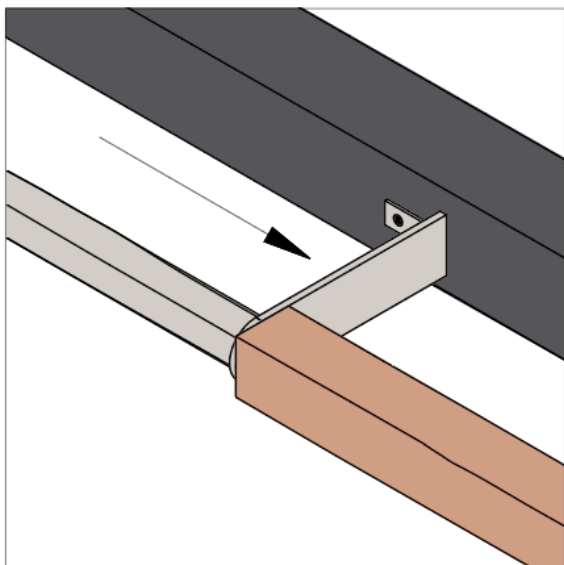


2. Fix end bracket to metal insert

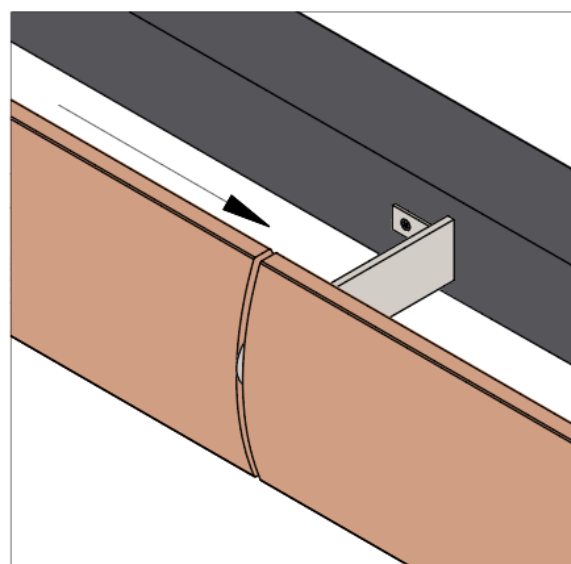
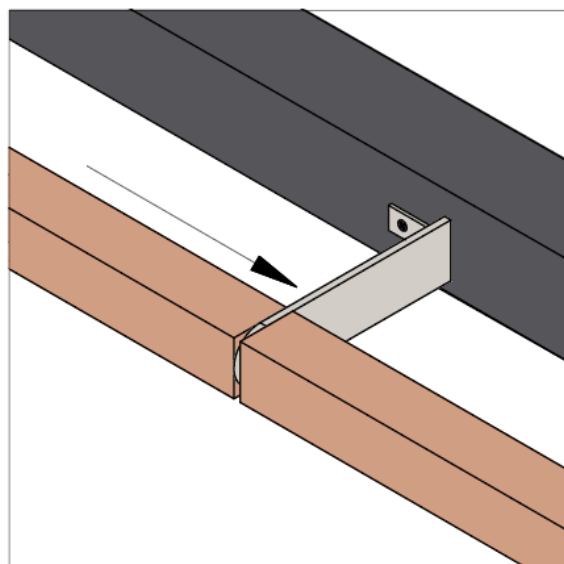


3. Slide Baguette or Louvre over metal insert

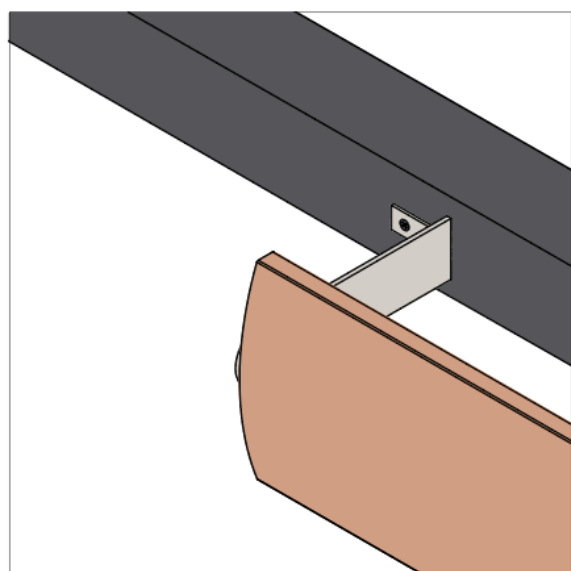
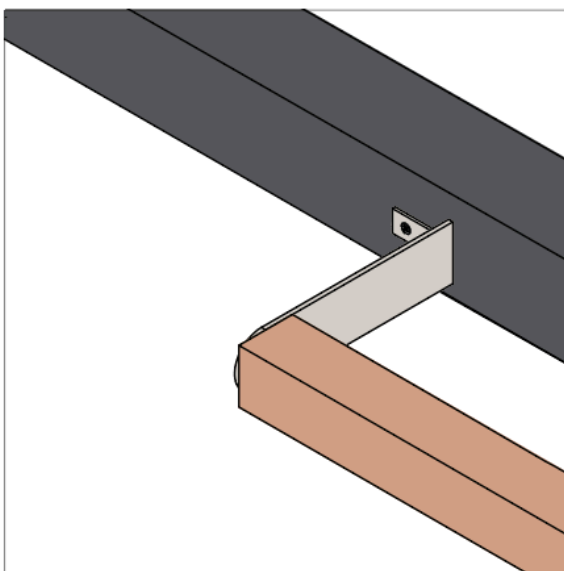
General Installation Procedure



4. Slide middle bracket over metal insert and fix to wall with L-brackets



5. Slide next Baguette or Louvre over metal insert



6. Fix end bracket to metal insert and fix to wall with L-bracket

Alternative Installation Method

The Baguette and Louvre system can be installed by firstly fixing the system together and then fixing this to a frame. This can be applied for both direct fix and L-bracket fix methods.





System Design

6

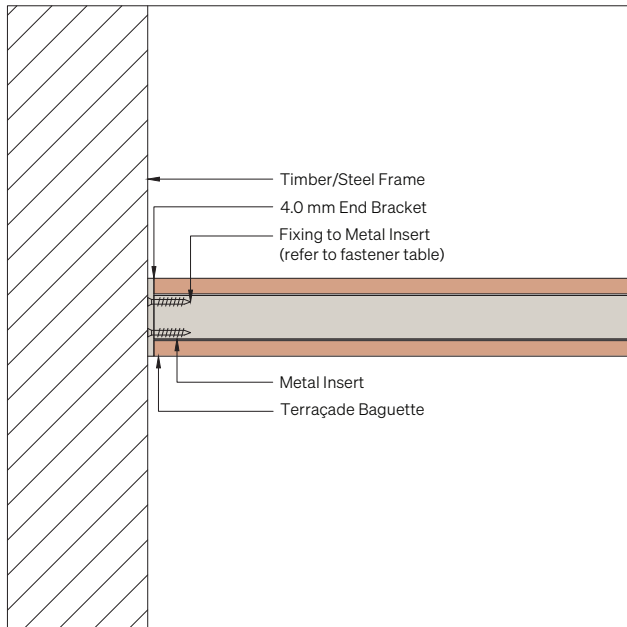
Common Details

System Design

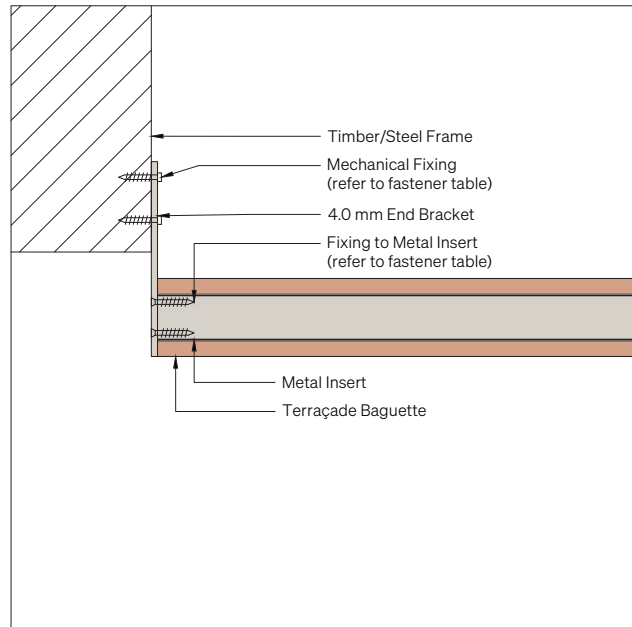
Common Details	Page Number
Baguette Fixing Details	
SD 01 Direct Fix End Bracket Detail	45
SD 02 Direct Fix Middle Bracket Detail	45
SD 03 L-Bracket Fix End Bracket Detail	46
SD 04 L-Bracket Fix Middle Bracket Detail	46
Louvre Fixing Details	
SD 05 Direct Fix End Bracket Detail	47
SD 06 Direct Fix Middle Bracket Detail	47
SD 07 L-Bracket Fix End Bracket Detail	48
SD 08 L-Bracket Fix Middle Bracket Detail	48

Baguette Fixing Details

Direct Fix End Bracket Detail - SD 01

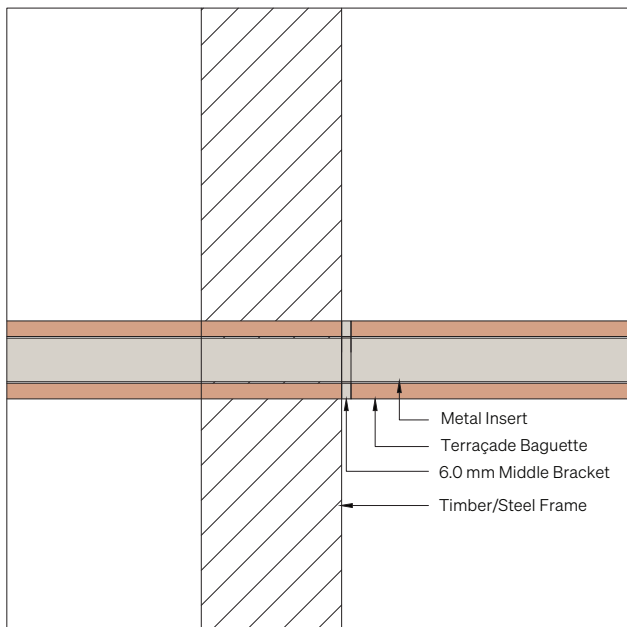


Section view

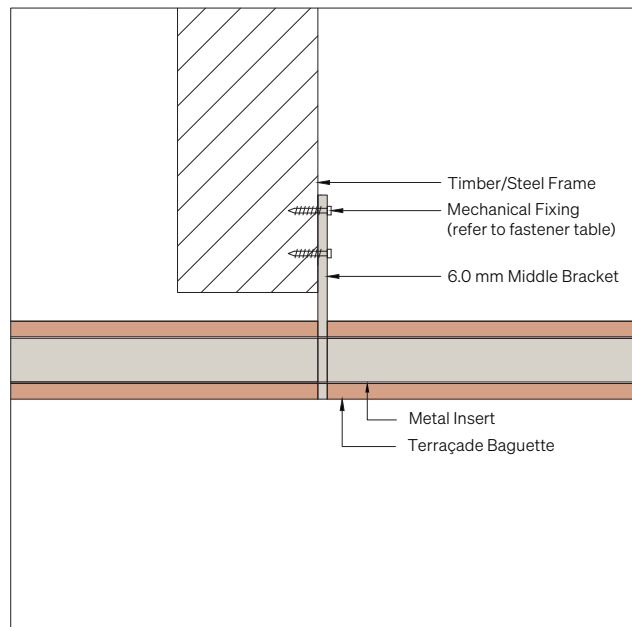


Plan view

Direct Fix Middle Bracket Detail - SD 02



Section view



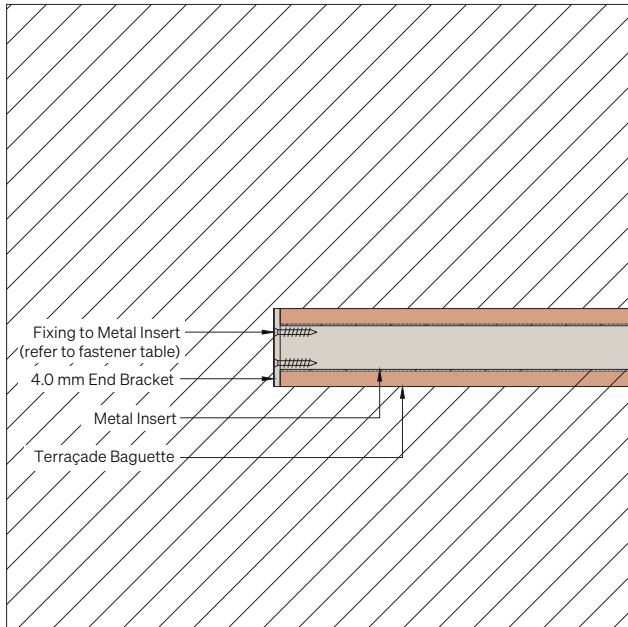
Plan view

© Copyright 2022. This drawing is indicative only and allowances should be made for material and onsite variations. The component and assembly details demonstrate a design methodology only. Assembly and documentation drawings should only be undertaken after reference and compliance with the relevant component's technical data. The diagram is not to scale. For more tailored solutions to suit individual applications, please contact Brickworks Building Products. Brickworks Building Products reserves the right to add, alter or delete components without prior notice.

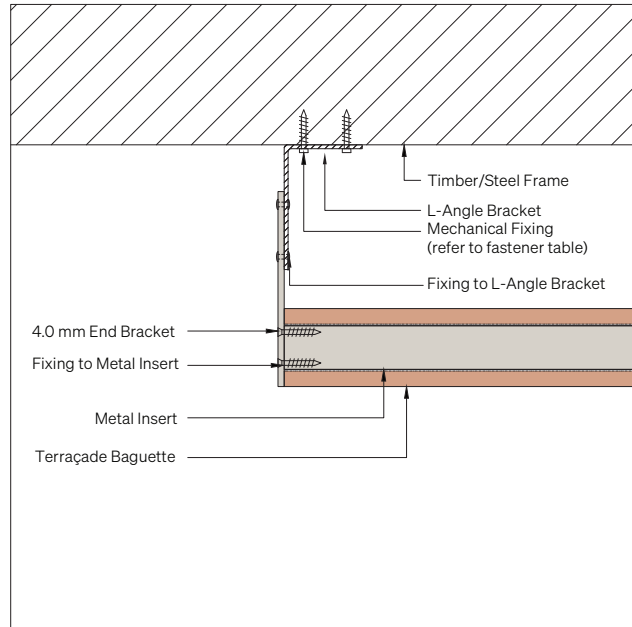
Common Details

Baguette Fixing Details

L-Bracket Fix End Bracket Detail - SD 03

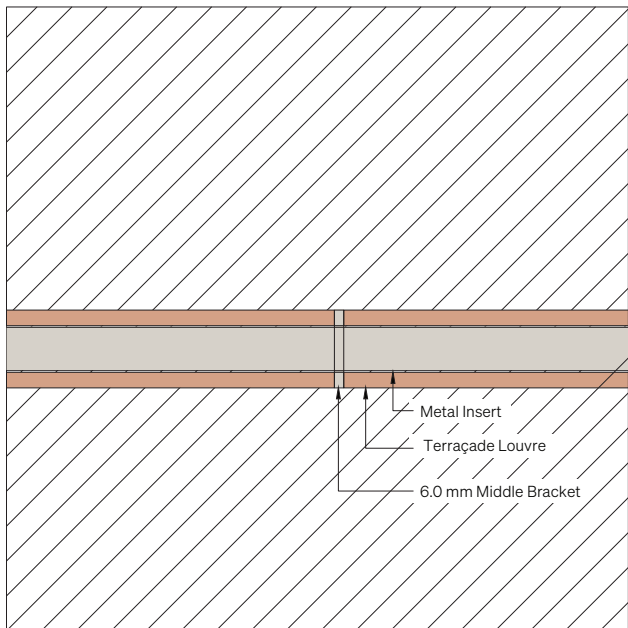


Section view

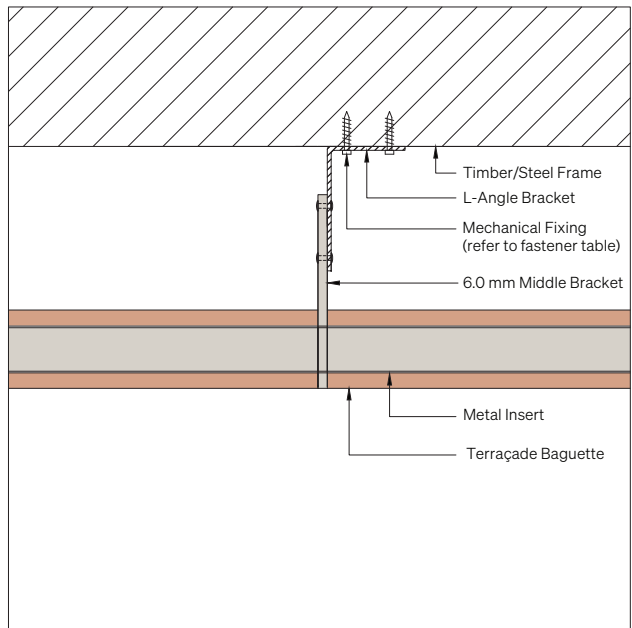


Plan view

L-Bracket Fix Middle Bracket Detail - SD 04



Section view

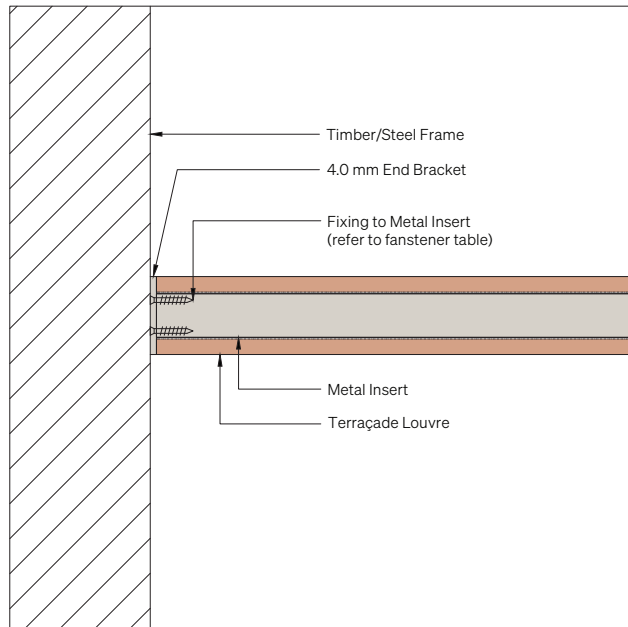


Plan view

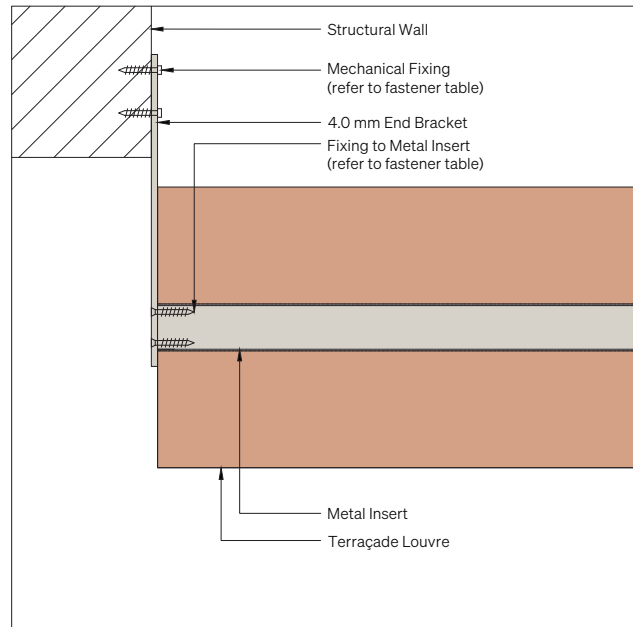
© Copyright 2022. This drawing is indicative only and allowances should be made for material and onsite variations. The component and assembly details demonstrate a design methodology only. Assembly and documentation drawings should only be undertaken after reference and compliance with the relevant component's technical data. The diagram is not to scale. For more tailored solutions to suit individual applications, please contact Brickworks Building Products. Brickworks Building Products reserves the right to add, alter or delete components without prior notice.

Louvre Fixing Details

Direct Fix End Bracket Detail - SD 05

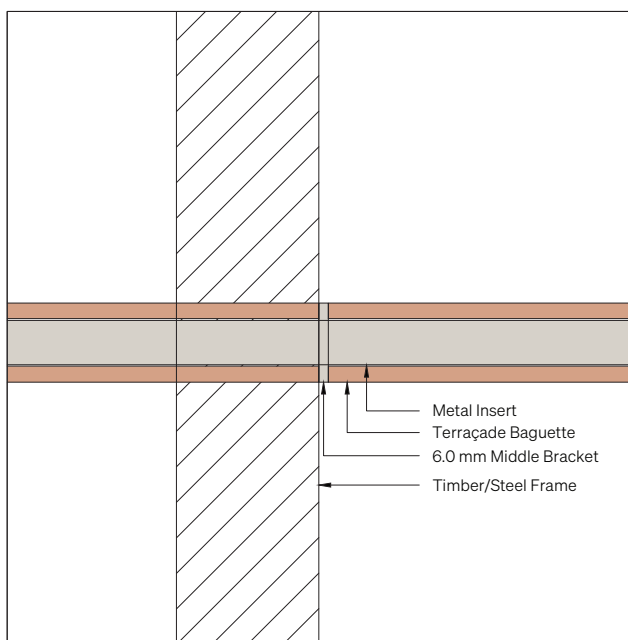


Section view

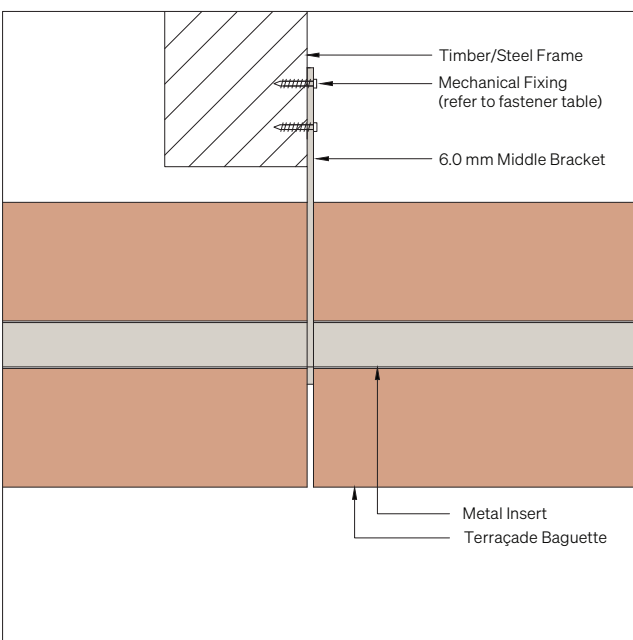


Plan view

Direct Fix Middle Bracket Detail - SD 06



Section view



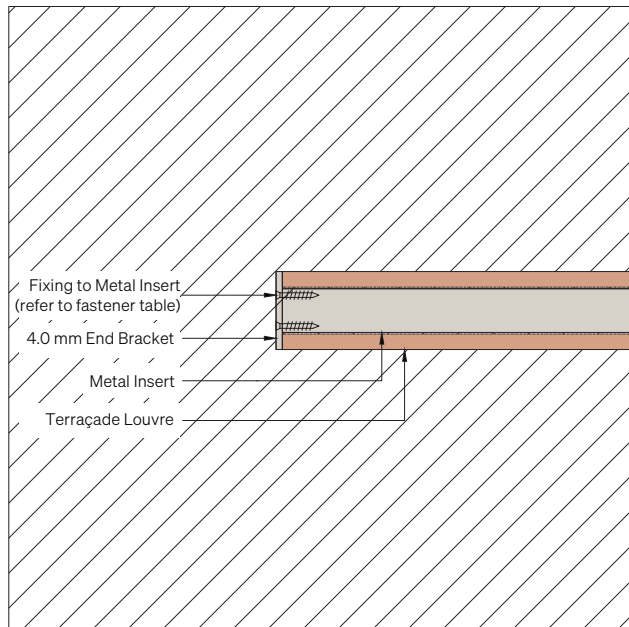
Plan view

© Copyright 2022. This drawing is indicative only and allowances should be made for material and onsite variations. The component and assembly details demonstrate a design methodology only. Assembly and documentation drawings should only be undertaken after reference and compliance with the relevant component's technical data. The diagram is not to scale. For more tailored solutions to suit individual applications, please contact Brickworks Building Products. Brickworks Building Products reserves the right to add, alter or delete components without prior notice.

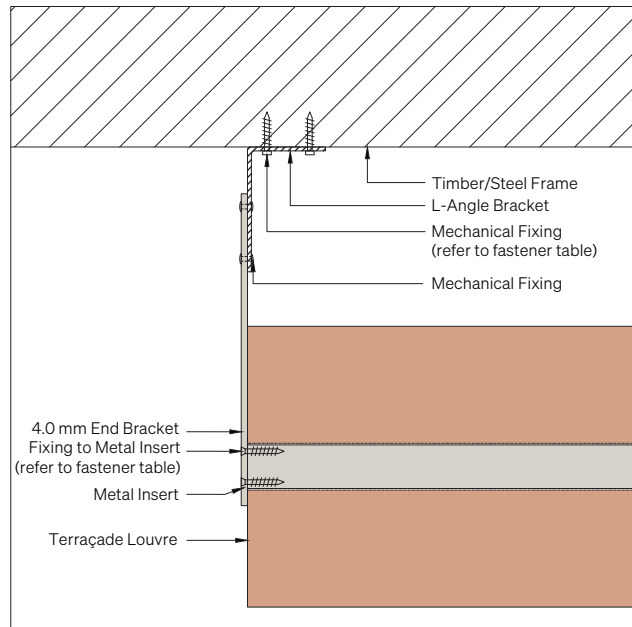
Common Details

Louvre Fixing Details

L-Bracket Fix End Bracket Detail - SD 07

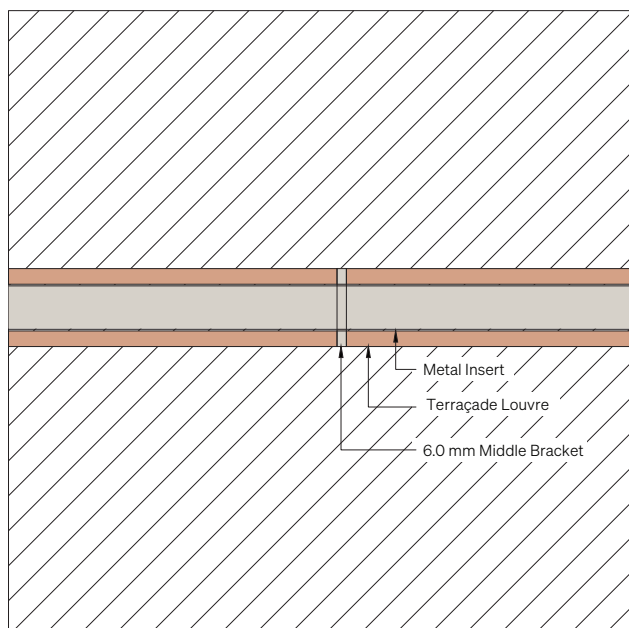


Section view

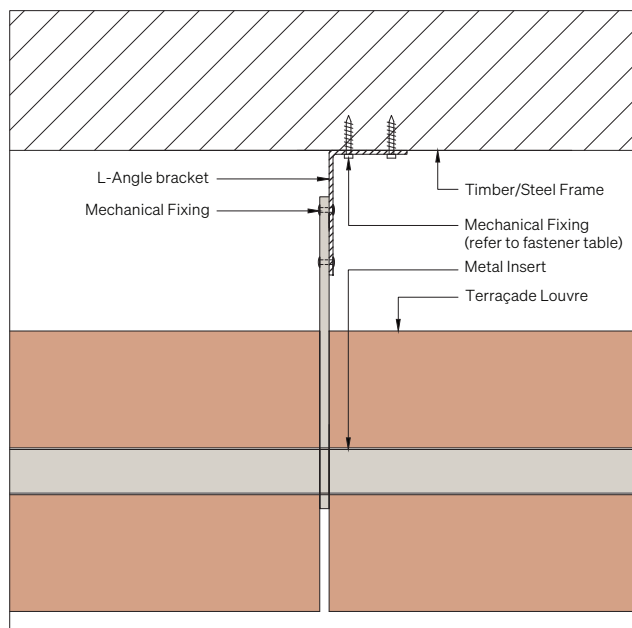


Plan view

L-Bracket Fix Middle Bracket Detail - SD 08



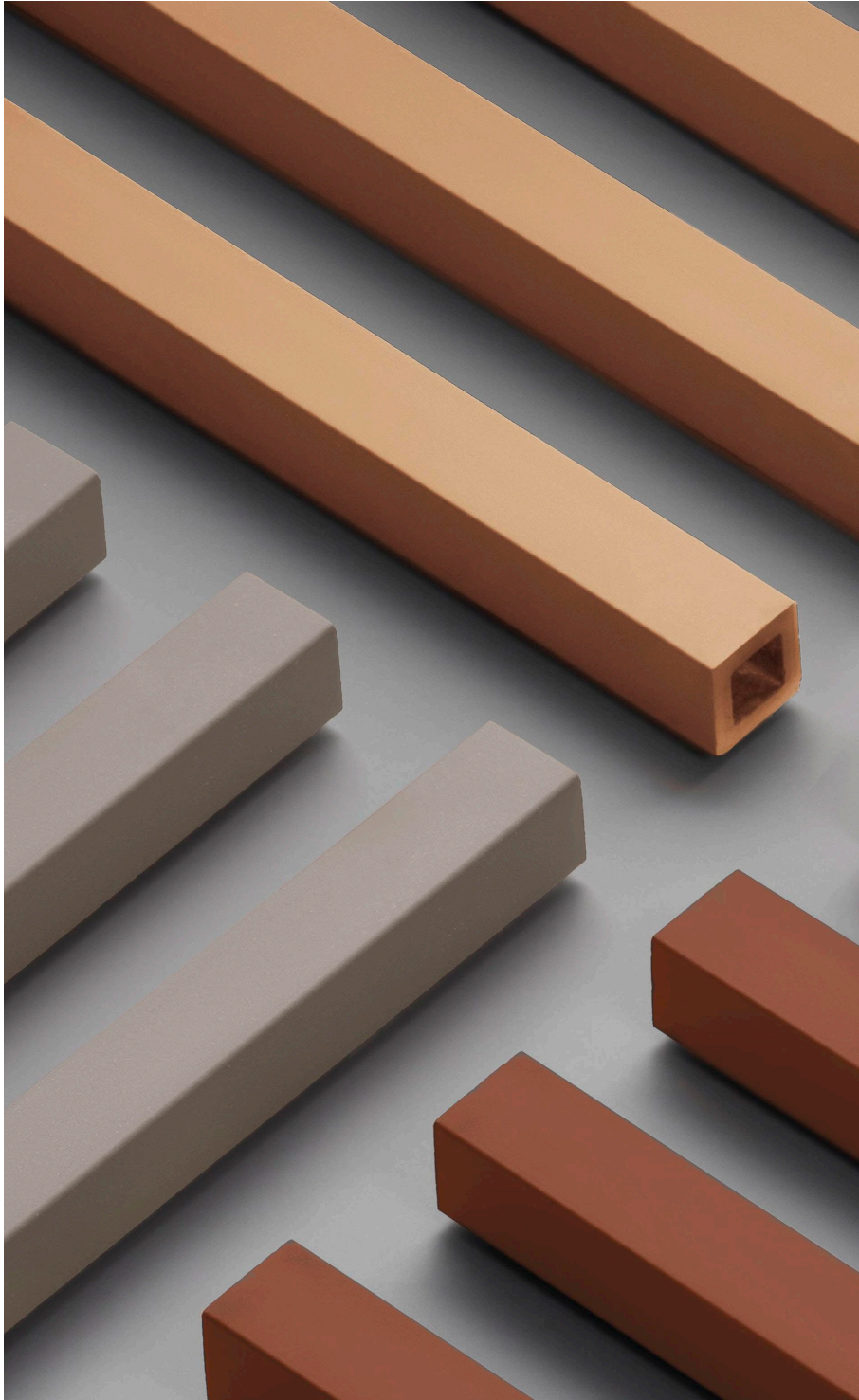
Section view



Plan view

© Copyright 2022. This drawing is indicative only and allowances should be made for material and onsite variations. The component and assembly details demonstrate a design methodology only. Assembly and documentation drawings should only be undertaken after reference and compliance with the relevant component's technical data. The diagram is not to scale. For more tailored solutions to suit individual applications, please contact Brickworks Building Products. Brickworks Building Products reserves the right to add, alter or delete components without prior notice.





Disassembly Process

7

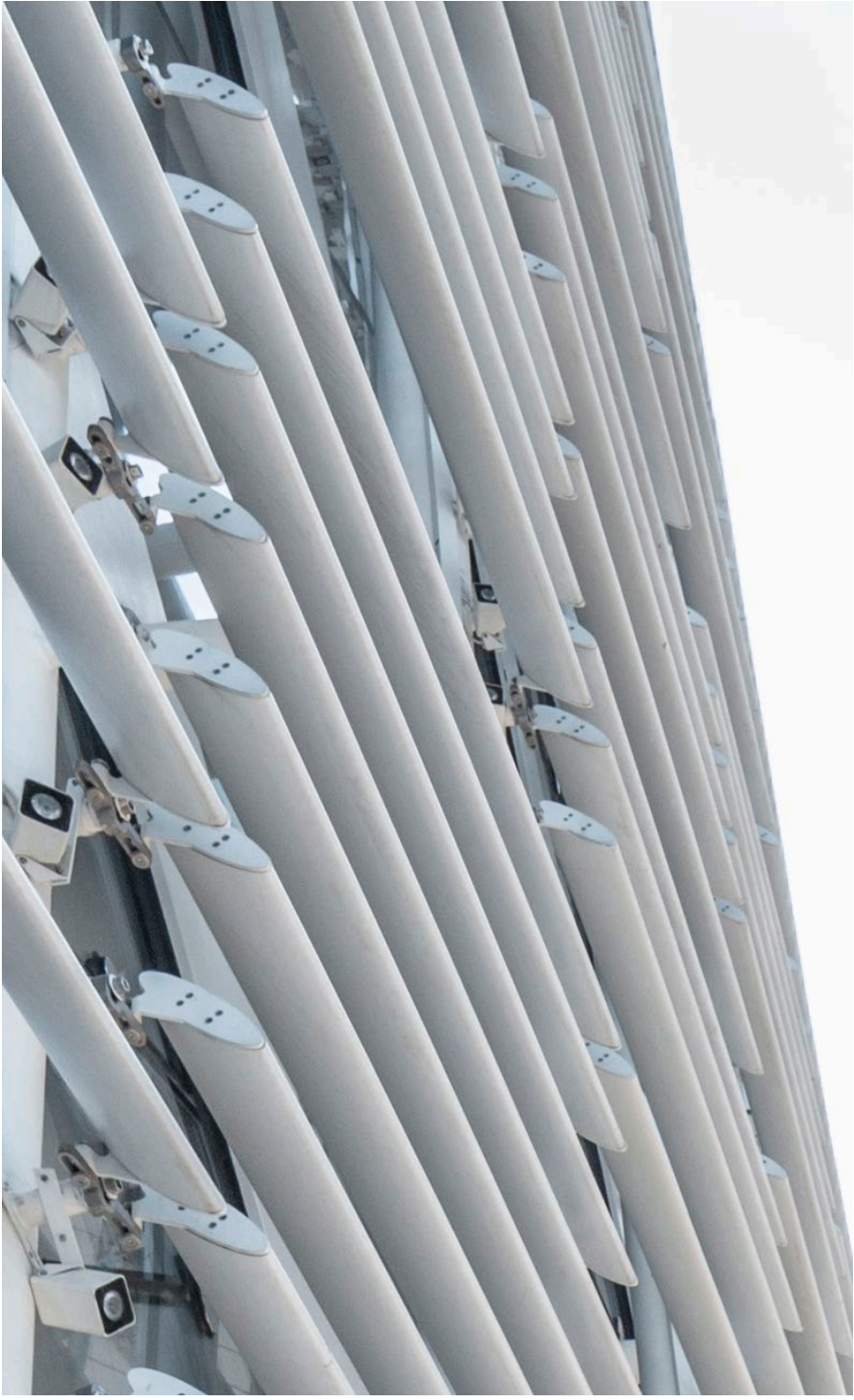
Disassembly Process

This procedure explains the standard disassembly of the Terraçade Baguette and Louvre system to facilitate the reuse of the Baguettes and Louvres, brackets, metal inserts, or complete system for another project. The Baguettes and Louvres can be easily removed and replaced with another colour or profile.

Disassembly Process

1. Commence disassembly of the Terraçade Baguette and Louvre system by starting from one side and working across.
2. Baguette or Louvre removal method:
 - a. Unscrew end bracket from metal insert and wall.
 - b. Slide the first Baguette or Louvre off the metal insert.
 - c. Unscrew the middle bracket from the wall and slide it off the metal insert.
 - d. Slide the next Baguette or Louvre off the metal insert.
 - e. Unscrew the next end bracket from the metal insert and wall.
3. Remove any flashings to openings and corners.
4. Remove any sub-framing if present.





Maintenance

8

Maintenance Guide

FOR TERRAÇADE™ FAÇADE SYSTEM COMPONENTS

1. System Inspection

It is recommended that the Terraçade Façade System be inspected at regular intervals to ensure the integrity of the system. The inspection interval will vary according to the sub-frame and trim components utilised in the system. Below is a summary of cleaning and maintenance information that can be accessed at the Terraçade website.

2. Cleaning

Terraçade Baguettes and Louvres are a natural terracotta product and are therefore virtually maintenance free. If you wish to remove any dirt or pollution grime that has built up over time, simply lightly hose or sponge down the Baguettes and Louvres with water. The Baguettes and Louvres should be washed down during installation using a sponge with water and a neutral pH cleaner and then rinsed off with clean

water. For ongoing maintenance, Baguettes and Louvres may be hosed or sponged to remove dust and the build-up of dirt. Normally, cleaning the Baguettes and Louvres will be as easy as letting the rain do the work for you.

3. Aluminium Components

a. Care & Maintenance Instructions

A simple regular clean will minimise the effects of weathering and will remove dirt, grime, and other build-up.

b. Recommended Cleaning Method

Just a gentle clean with a soft brush and mild detergent, followed by a freshwater rinse, will maintain the long-term performance of your aluminium components. In rural or normal urban environments cleaning should occur every 12 months. In areas of high pollution, such as industrial areas, geothermal areas or coastal environments, cleaning should occur every three months.

In particularly hazardous locations, such as beachfronts, severe marine environments or areas of high industrial pollution, cleaning should be increased to monthly.

4. Sealing Baguettes and Louvres

Terraçade Baguettes and Louvres have a hard-wearing surface that is resistant to most normal staining agents. In particularly difficult environments, for instance high traffic city areas, Terraçade may be exposed to graffiti vandalism or build-up of carbon dirt from passing motor vehicle traffic.

A high-quality impregnating (penetrating) sealer can be used to make the surface easier to clean and prevent permanent staining as much as possible. Dry Treat Stain-Proof is a permanent, visible, fully breathable impregnating sealer for protection against water ingress and salt attack. It has graffiti resistance and a 15-year performance warranty when sealing is performed by an Accredited Applicator (visit www.drytreat.com for

more detail). Stain-Proof has special molecules which bond permanently inside the terracotta. It is highly recommended for such surfaces for its 15 years plus durability and its ability to stand up to commercial cleaning techniques such as pressure hosing which are commonly used to clean vertical surfaces.

a. Maintenance After Sealing

Due to superior bonding, Stain-Proof will not be harmed by strong alkaline cleaners or pressure hosing. Standard cleaning regimes (except for acid washing) can continue to be used on the treated surfaces, and the use of special proprietary cleaning chemicals or equipment is not required to uphold the performance warranty.

b. Pre-sealing preparation

Any surface to be sealed should be clean and looking just as you want it before it is sealed - it may be impossible to remove stains after sealing. Ensure the

material is thoroughly dry before applying any Dry-Treat sealer

c. Test Area

Always test any cleaning chemical or sealer on a small, inconspicuous area of the surface 24 hours before doing the project, to check that it will produce the desired result.

5. Replacing Individual Baguettes and Louvres

If a Terraçade Baguette or Louvre is damaged they can easily be replaced. Simply remove the adjacent Baguettes or Louvres by starting from one end of the row and unscrewing the end and middle brackets and sliding off the Baguettes or Louvres. Replace the broken Baguettes or Louvres and re-install the Baguette or Louvre system.

Quality Guarantee

100 YEAR

PRODUCT WARRANTY

20 YEAR

SYSTEM WARRANTY

Brickworks Building Products continued commitment to quality and innovation ensures that Terraçade Baguettes and Louvres will remain the benchmark for excellence for many years to come. Our tradition, experience and financial strength have made Brickworks Building Products the first choice for many architects, builders and designers.

Terraçade Baguettes and Louvres has a warranty of 20 years on the system and a 100 year warranty on colour fastness and durability, as per Terraçade Warranty for Terraçade. Contact Brickworks Building Products to have an architectural consultant visit you with samples and technical information, or to discuss your next project.

Please note: Photographs should be considered indicative of colour and texture only. Variations in colour and shade are inherent in all clay fired products. All Terraçade Baguettes or Louvres and accessories should be ordered at the same time to avoid the possibility of batch to batch variations. No responsibility will be accepted for colour selection, matching, blending and any other physical or colour related defects once the Baguettes or Louvres have been incorporated into any construction.



Backed by Brickworks

Local expertise. Global quality. Brickworks Building Products is one of Australia's biggest building material producers. With heritage going all the way back to one of Australia's founding brick producers, we're proud of our reputation for design, innovation and sustainability.

BRICKWORKS

AUSTRALIA



NORTH AMERICA



EXCLUSIVE DISTRIBUTOR







THE UNIVERSITY OF
SYDNEY

Innovation Week
10-12 August 2016



Visit. terracade.com.au

Call. 1300 633 154

Design Studios

Sydney

Tel. 02 9611 4200
2 Barrack Street
Sydney NSW 2000

Adelaide

Tel. 08 8443 2222
70 Hindmarsh Square
Adelaide SA 5000

Melbourne

Tel. 03 8621 7777
367 Collins Street
Melbourne VIC 3000

Perth

Tel. 08 6332 5800
67 King Street
Perth WA 6000

Brisbane

Tel. 07 3634 5604
27 James Street
Fortitude Valley QLD 4006

Hobart

Tel. 03 6212 9120
210 Elizabeth Street
Hobart TAS 7000

Follow us



Visit. terracade.com.au

Call. 1300 633 154

A BRAND OF

BRICKWORKS

