

*"Terraçade is texturally and visually
a good material to use"*

NUMBER 31

*Kolling Research and Education Building,
Royal North Shore Hospital, St Leonards NSW*

Client: NSW Department of Health, University of
Sydney

Architect: Hassell

Builder: Bovis Lend Lease

Terraçade™ installation: Overall Façade Systems

Austral Bricks products:

Terraçade TL in Derwent (corner panels), Terraçade
XP in Kimberley Linear, Bunbury Linear (eastern
façade)





There's a new landmark on the North Sydney horizon, one that can be seen from the Harbour Bridge and even the CBD. It's the new Kolling Research and Education Building, a much-needed \$99 million addition to the Royal North Shore Hospital campus.

Austral Bricks Terraçade terracotta façade system adds colour, texture and more than a little drama to the full height of the building's eastern and western facades, dramatically “bookending” the 12-storey building.

The new facility brings together medical researchers and educators previously dispersed around the RNSH campus. The project received a major boost when the University of Sydney contributed \$31 million for an additional four floors to accommodate 200 more researchers.

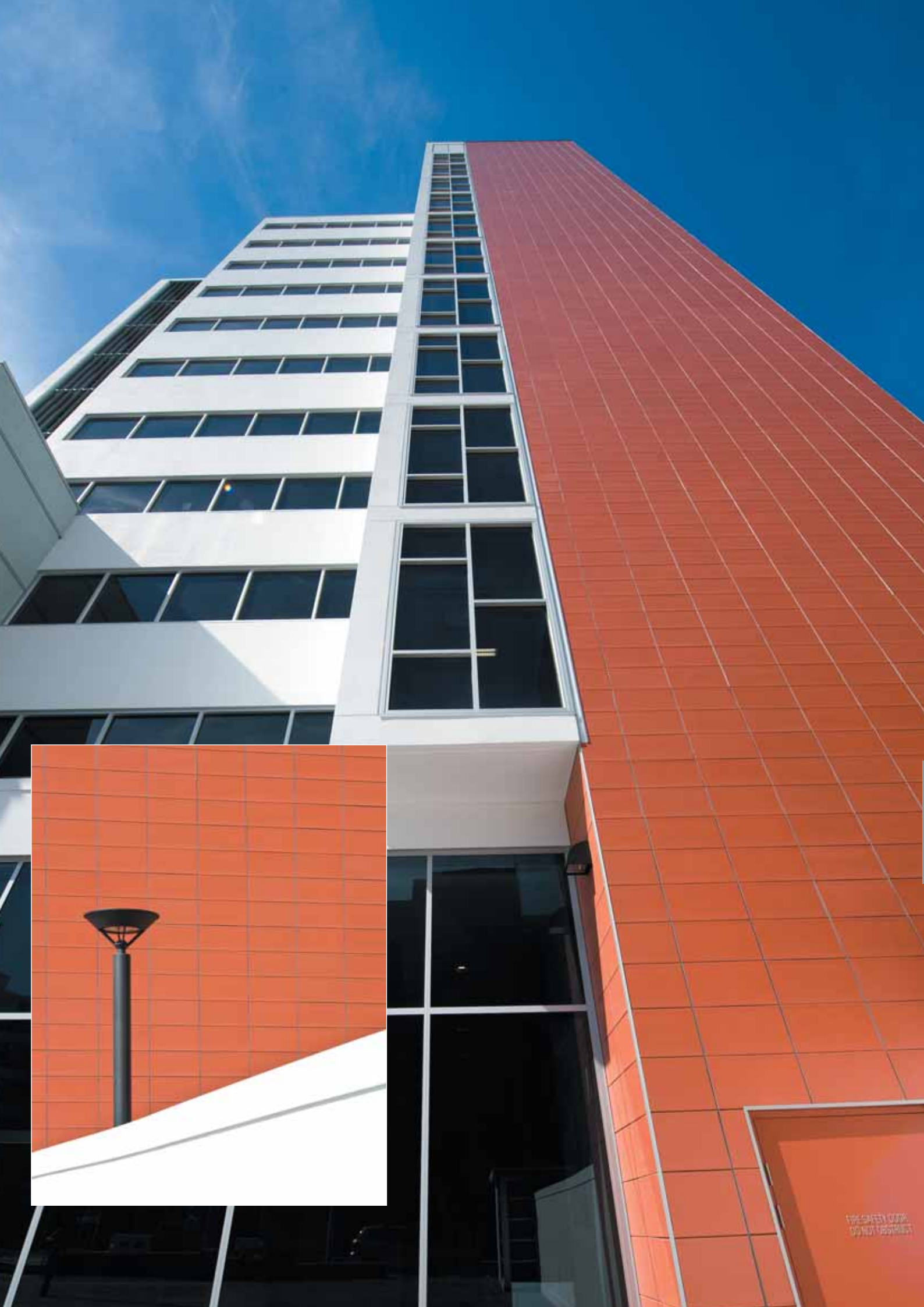
The building structure is conventional, albeit with higher floor-to-floor heights to accommodate services. The northern and southern faces are almost full glazed to maximise light penetration through the floor plate.



“Economy was one factor in the selection of Terraçade”

Stairwells on the south-eastern and south-western corners are clad to full height in Terraçade TL in Derwent, a classic terracotta colour. The eastern elevation is highlighted with a broad panel of Terraçade XP in Kimberley Linear, accented with bands of Bunbury Linear.

Economy was one factor in the selection of Terraçade, according to project architect Chris Carr: “It’s good value for money,” he says simply. Appearance was another. “We wanted that terracotta feel, reminiscent of the brickwork that the original hospital was built from,” he explains. “And Terraçade is texturally and visually a good material to use. We thought it looked right and worked with our design.”





“We wanted that terracotta feel, reminiscent of the brickwork that the original hospital was built from”

Sealing the deal were Terraçade's low maintenance needs and long term weathering potential. “ You know how a kiln-fired product (such as bricks and Terraçade) is going to weather. From that point of view we are very comfortable with Terraçade. We don't anticipate having to send people out to clean it”

Overall Façade Systems installed all the façade elements on this project. However this was their first Terraçade installation. Site manager Nick Demetriou was impressed by the Terraçade technical literature. “ It's quite detailed and very descriptive, it shows you how to trim and terminate and cut different elements and make it all work.”

The two Terraçade systems have the same size tile modules – 600 mm by 300 mm – and use the same installation model: a breathable membrane, something like sarking, is attached to the wall and suspension rails to carry the Terraçade tiles are





“It’s a very neat installation. No complaints at all.”

fastened over this. The XP tiles are heavier and are hung on horizontal rails. TL tiles use vertical rails. In both systems, trims are placed at corners and around the perimeter, and vertically between tiles.

Nick had a surveyor set out a grid every 1.2 metres horizontally and vertically. “That way I didn’t have to go too far to check a line for alignment.” The setout is critical but as Nick found attaching the tiles is fast and easy. “I think the system is great,” he says summarising their experience.

The Kolling Building was handed over in late August 2008 and the new tenants moved in soon after. The completion of this stage unlocks the centre of the campus to allow for a massive redevelopment of the hospital.

in practice



(Left of photo) Terraçade TL in Derwent, (right) Terraçade XP in Kimberley Linear banded with Bunbury Linear

Photography: Jackie Dean
Aerial photograph by Skycam, courtesy Royal North Shore Hospital

NEW ZEALAND
Phone 0800 AUSTRAL (2878725)
www.terracade.co.nz

AUSTRALIA
Phone 1300 881 712
www.terracade.com.au

terracadeTM
TERRACOTTA FAÇADE SYSTEM