

# TORRENS BOUNDARY WALL SYSTEM

*Inex>Renderboard*



INEX>BOARDS™

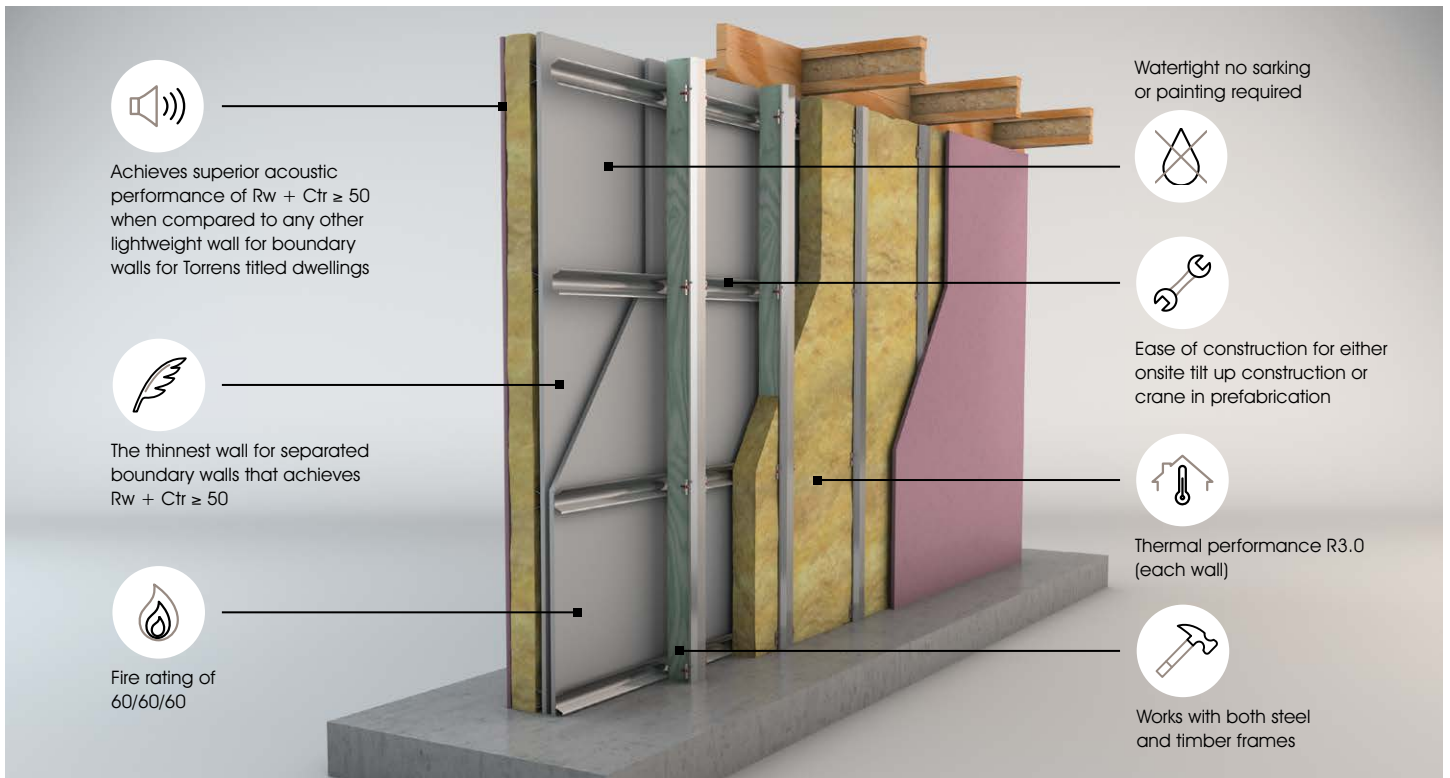
# TORRENS BOUNDARY WALL SYSTEM

## INEX>RENDERBOARD

Inex Torrens Boundary Wall is an innovative dual boundary wall system for the construction of fully detached duplexes, townhouses or terraces. The Inex Torrens Boundary Wall System is a compact solution that maximises space creating more liveable areas.

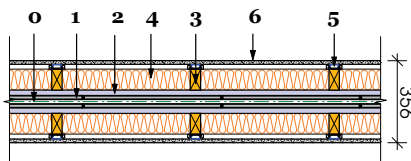
It is designed for ease of construction with either onsite tilt up or crane in prefabrication to create independent structures

when building back to back on the boundary line. Being a tested discontinuous wall system that achieves a 60/60/60 fire rating from both directions and an acoustic rating of  $Rw+Ctr \geq 50$ , Inex Torrens Boundary Wall delivers a variety of floor plan solutions for adjoining class 1 buildings in accordance with NCC requirements.

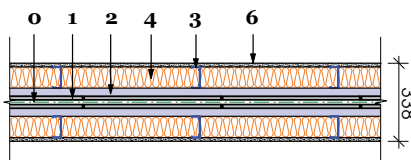


## SYSTEM CONFIGURATION

### TIMBER FRAME



### STEEL FRAME

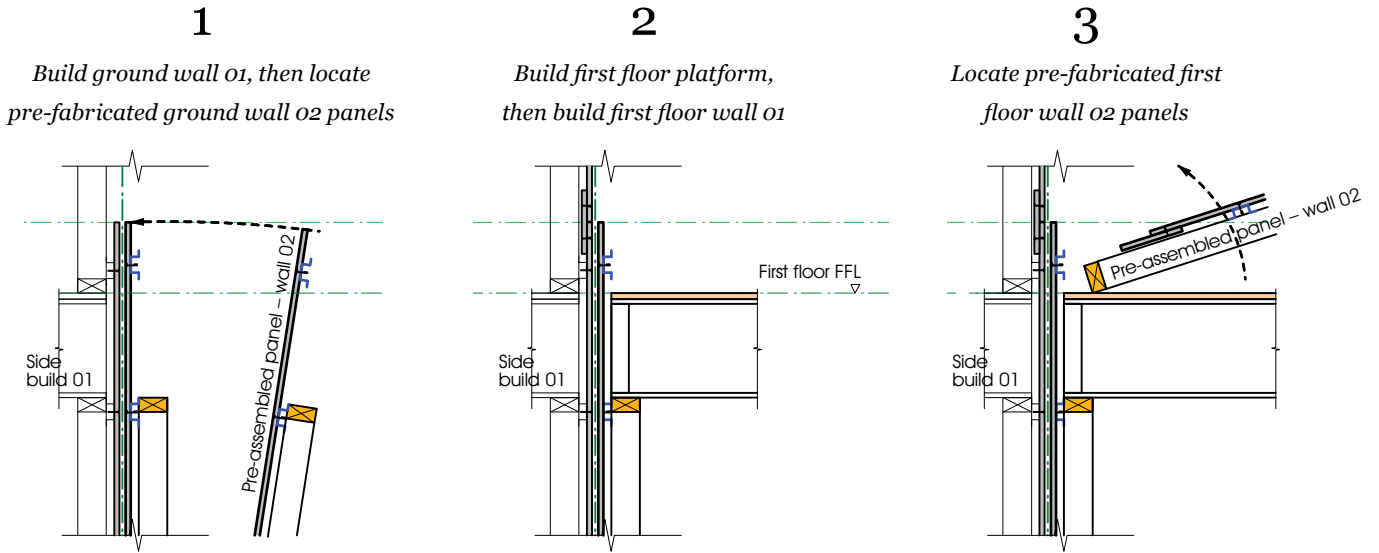


- 0 20 mm Cavity
- 1 16 mm INEX>RENDERBOARD
- 2 Min. 25 mm, 0.75 BMT Top Hat (for timber frame), or min. 35 mm, 0.75 BMT Top Hat (for steel frame) at max. 600 mm vertical centres
- 3 Min. 90 mm Timber Frame to AS 1460, or min. 92 mm Steel Frame to AS/NZS4600
- 4 90 mm Thick R2.5 Knauf Earthwool Insulation
- 5 Min. 16 mm Furring Channels on 5 mm Fixing Clips at max. 900 mm Vertical Centres
- 6 16 mm Thick Knauf Fireshield Plasterboard

*Note: INEX>RENDERBOARD is a lightweight non-loadbearing cladding material which does not deliver bracing resistance to the frame and any such framing resistance should be provided by the frame design itself.*

# INSTALLATION & ACOUSTICS

## TYPICAL ASSEMBLY SEQUENCE TILT UP OPTION



## ASSURANCE OF ACOUSTIC PERFORMANCE

In duplex, triplex or townhouse developments adjoining property living rooms and bedrooms can be less than 350 mm apart. Acoustic performance & compliance is a critical consideration. The NCC requires separating walls in adjoining Class 1 buildings to meet not less than  $Rw+Ctr$  50.

*Inex Torrens Boundary Wall Systems have been tested at the CSIRO Acoustic Laboratory to achieve  $Rw/Rw+Ctr = 63/53$ .*

## ACOUSTIC & FIRE PERFORMANCE

### DUAL SEPARATING WALL

No.	Internal Lining SIDE 1	Internal Lining SIDE 2	Rw/Rw+Ctr	Test or PKA Opinion	FRL	Thickness (mm)
<b>TIMBER FRAME</b>						
DT1		2 x 16 mm Knauf Fireshield	63/53	CSIRO TL603-07		351
DT2	16 mm Knauf Fireshield with Furring Channels + Clips	2 x 13 mm Knauf Fireshield	62/50	PKA-A187	60/60/60	345
DT3		16 mm Knauf Fireshield with Furring Channels + Clips	61/50	PKA-A187		356
<b>STEEL FRAME</b>						
DS1	16 mm Knauf Fireshield	16 mm Knauf Fireshield	61/50	PKA-A187	60/60/60	338

### SINGLE EXTERNAL WALL

No.	Single Lining	Rw/Rw+Ctr	Test or PKA Opinion	FRL	Thickness (mm)
<b>TIMBER FRAME</b>					
ST1	16 mm Knauf Fireshield with Furring Channels + Clips	56/44	CSIRO TL603-09	60/60/60	168
ST2	10 mm Knauf Mastashield	47/38	CSIRO TL603-02		141
<b>STEEL FRAME</b>					
SS1	16 mm Knauf Fireshield	58/51	PKA-A187	60/60/60	159
SS2	10 mm Knauf Mastashield	56/45	PKA-A187		153

## INEX>BOARDS™

[inexboards.com.au](http://inexboards.com.au) | 1300 463 923



### NATIONAL HEAD OFFICE

62 Belmore Road  
Punchbowl  
NSW 2196

***KNAUF***

[knaufplasterboard.com.au](http://knaufplasterboard.com.au) | 1300 724 505

***KNAUFINSULATION***  
*it's time to save energy*

[knaufinsulation.com.au](http://knaufinsulation.com.au) | 07 3393 7300

Proud Supporters



**BRICKWORKS**  
— BUILDING PRODUCTS —

INEX>BOARDS is a product of the Brickworks Group.

[BW1637\\_09/2017\\_designsuite.com.au](http://BW1637_09/2017_designsuite.com.au)