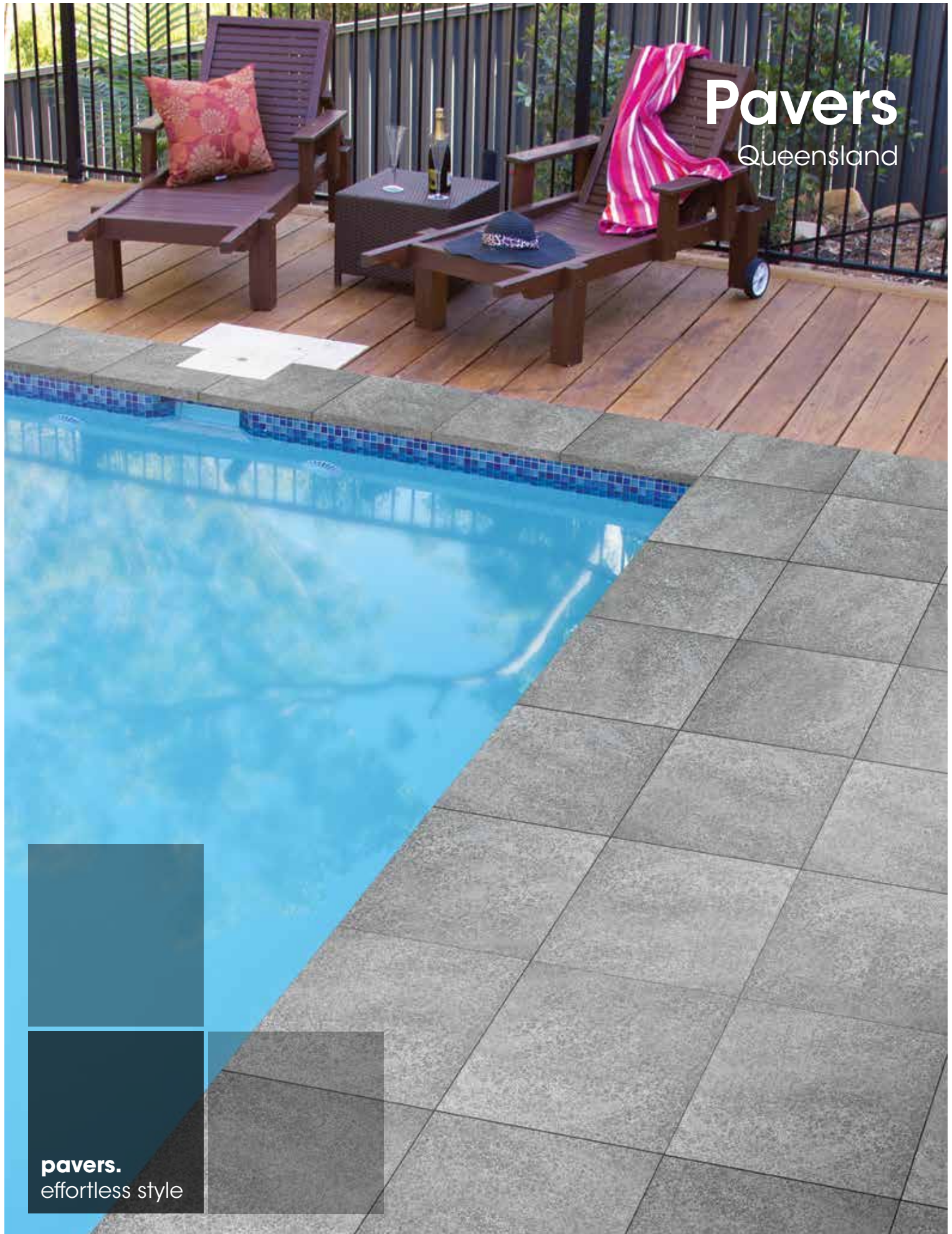


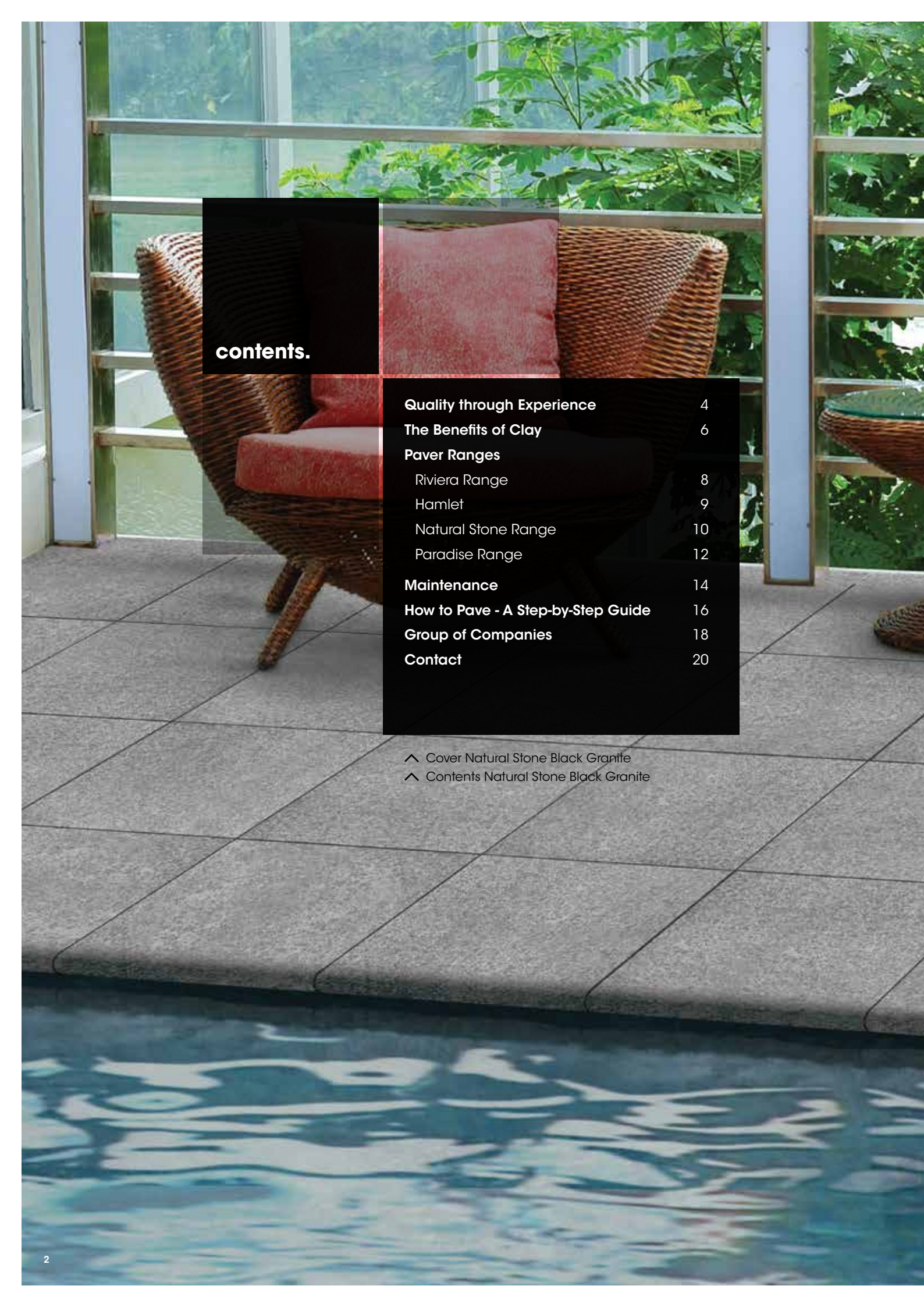
# Pavers

Queensland



**pavers.**  
effortless style



A wicker chair with red cushions is positioned on a patio. The patio floor is paved with large, light-colored square tiles. In the background, there is a swimming pool with water reflecting the surrounding greenery. The scene is viewed through a glass railing.

## contents.

<b>Quality through Experience</b>	4
<b>The Benefits of Clay</b>	6
<b>Paver Ranges</b>	
Riviera Range	8
Hamlet	9
Natural Stone Range	10
Paradise Range	12
<b>Maintenance</b>	14
<b>How to Pave - A Step-by-Step Guide</b>	16
<b>Group of Companies</b>	18
<b>Contact</b>	20

- ^ Cover Natural Stone Black Granite
- ^ Contents Natural Stone Black Granite









## Quality through Experience

Strong, striking and extremely versatile, Austral Bricks clay pavers and complementing products are an essential element of any landscaping design. Our ranges offer an array of vivid colours and dynamic shapes to help create landscape designs that evoke both style and beauty. Proven to last the life of your landscaping project, Austral Bricks offer unsurpassed quality that only one of Australia's largest and most experienced manufacturers can deliver.

Good looks and hard wearing finishes make Austral Bricks paver products suitable for stylish paving designs, pool surrounds or commercial paving projects. Their strength and durability also makes them the ideal choice for the wear and tear of high volume traffic areas, light vehicular areas and decorative streetscapes.

With most ranges being Salt Safe and Freeze/Thaw resistant, many products can be used in areas by the sea, for both salt water and chlorinated pools and regions that receive seasonal snow fall.



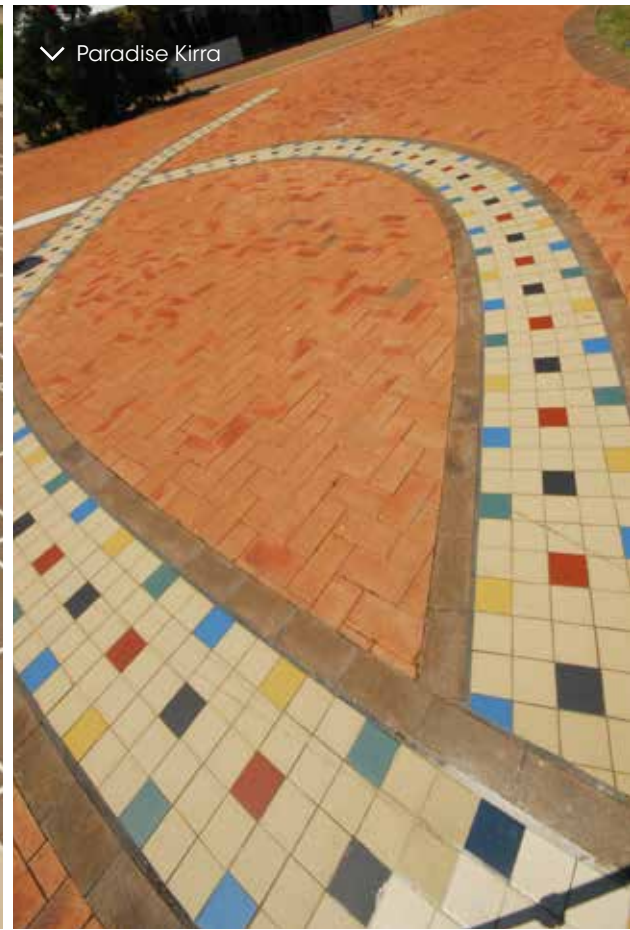
Clay is a natural resource which has been used for centuries because it retains its colour forever as well as its durability. With increasing usage around the world, engineers and specifiers are now appreciating the advantages of using clay products. Austral Bricks clay pavers provide excellent abrasion and slip skid resistance and can withstand heavy traffic loads.

Continued commitment to quality ensures Austral Bricks will remain the benchmark for excellence for many years to come. Our pavers are fully tested against Australian Standards for strength, abrasion resistance and slip skid resistance.

Our tradition, experience and financial strength has made Austral Bricks pavers the first choice for many Architects, Builders, Developers and Home Buyers.



✓ Riviera Naples



✓ Paradise Kirra

## The Benefits of Clay

At first glance most pavers look alike. So why use clay pavers? Only clay pavers offer an unbeatable combination of qualities that guarantee your paving will give long and colourful service with little maintenance. Only Austral Bricks offers an industry leading range of clay pavers to suit your busy lifestyle.

### **Permanent Colours**

Clay pavers are made from naturally occurring minerals fired at temperatures up to 1000 degrees centigrade. The colours are locked in for life, and will not fade or go chalky.

### **Natural Appeal**

A subtle colour variation is inherent in clay pavers. This is part of their natural appeal and ensures clay pavers will blend beautifully into your landscape.

### **Stay Cleaner for Longer**

Thanks to their composition and firing, clay pavers do not readily absorb dirt and spills. Cleaning is easy, leaving more time to enjoy the outdoors. Clay paver colours and textures don't show up dirt, grime or light scuffing. Sealing is usually not required.

### **Excellent slip resistance**

Austral Bricks clay pavers meet Australian Standards for slip resistance, an important consideration, especially around pool areas.

### **Kiln-fired for maximum strength**

Clay pavers are made from selected minerals that are highly compacted and fired at extreme temperatures. With proper design and construction, your new pavement will have a long and colourful life.

### **Salt Safe**

Most Austral Bricks clay pavers are guaranteed to meet Australian Standards for salt resistance. You can pave with confidence in harsh environments such as salt-chlorinated pools and coastal locations.







^ Riviera Valetta

## Riviera®

Riviera ceramic pavers have been designed to complement all lifestyles and home decors.

Excellent slip-resistance and salt-safe qualities make Riviera pavers ideal for use around salt-chlorinated pools and high-traffic areas. Select from a range of Italian-inspired colours to beautify and individualise your outdoor spaces.

### Available in:

- 300 x 300 x 40mm
- 300 x 300 x 40mm Bullnose



Naples



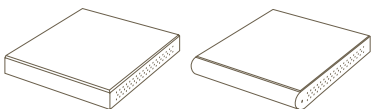
Valletta



Portofino



Imperia







^ Hamlet Blue

# Hamlet™

Architecturally inspired.

The Hamlet paver collection will set your project apart. Whether they be used indoors or out, this special sized paver produced in the renowned Bowral colours is in a class of its own.

**Available in:**

230 x 76 x 55mm



Blue



Sepia



Ash





^ Natural Stone Limestone Tumbled

## Natural Stone

Enjoy the luxury of natural stone in your home.

From the striking dark colours of our granite through to the light sophistication of our Limestone and Sandstone, you will not be disappointed with your selection.

We recommend sealing our Natural Stone products. Consult your local hardware store for available products.

**Available in:**

- 400 x 400 x 30mm
- 400 x 400 x 30mm Bullnose
- 400 x 400 x 20mm\*
- 400 x 400 x 20mm Bullnose\*

\*Only available in Grey Sandstone



Black Granite



Grey Granite



Grey Sandstone



Limestone Tumbled













^ Paradise Tugun

# Paradise

Discover how easy the art of outdoor living is with Paradise pavers.

From driveways to garden paths and courtyards, Paradise Pavers come in a colour range of Miami, Tugun, Kirra, Tweed, Coolangatta and Burleigh, suited to our famous Queensland outdoor living.

Paradise is an ideal choice for courtyards where space is at a premium and are equally suited to large outdoor spaces. Salt safe and durable, Paradise pavers are made to last.

**Available in:**

230 x 114 x 50mm



Miami



Tugun



Burleigh



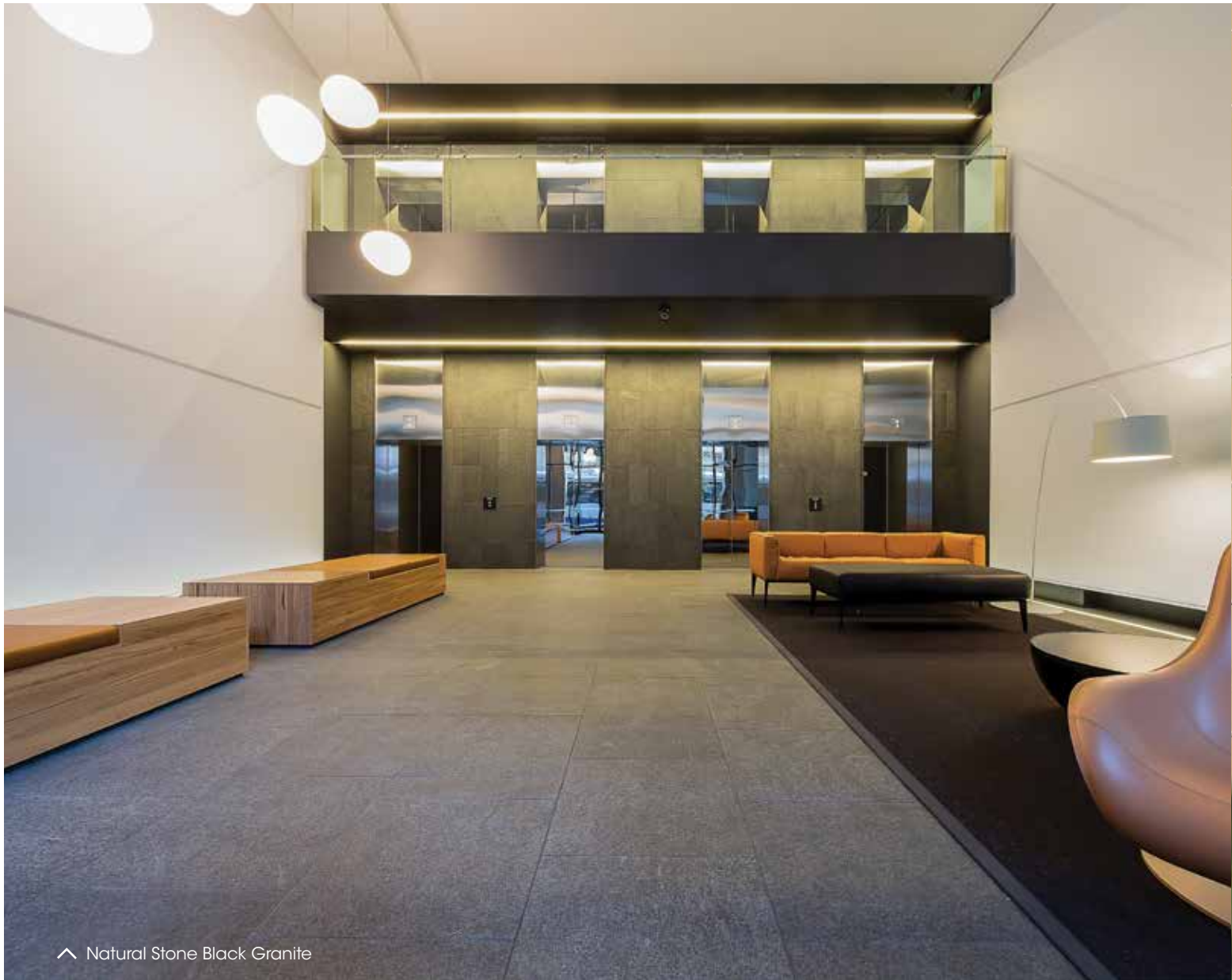
Kirra



Coolangatta



Tweed



^ Natural Stone Black Granite

## Maintenance

Maintaining your paved area will guarantee that it holds its good looks and natural appeal forever, ensuring added resale value to your home.

All paved areas, over time, are subject to spillages and a build up of dirt and grime. By following certain guidelines and cleaning procedures, maintaining the good look of your Austral Bricks pavers need not be a problem.

### **Vanadium**

Vanadium is a metallic salt present in most light coloured clays throughout the world. These salts are insoluble to begin with, but become soluble when clays containing these salts are fired above 850 degrees centigrade.

These salts then show up as yellow, green or reddish brown discolouration. Whilst not harmful in any way, these salts are not permanent and do not indicate any defect in the product. The stains take the form of a thin film on the surface of the brick or paver and will weather away with time.

Alternatively, the chemical removal process is a very easy and inexpensive way to permanently remove the stains. Use 500gms of caustic soda diluted in five litres of water - then brush this onto a dry surface or sweep it over the clay paving. The reaction of the caustic soda is quite slow and can take up to a day to complete.





**Efflorescence**

Efflorescence is a powdery deposit of salts (usually white or yellow) and is often found on the surface of clay pavers after a period of rain. Efflorescence appears due to external sources from surrounding materials. For example, salty soils or fertilisers draw up through the pavers by the drying effect. Prior to laying your pavers, make sure a clean bed of sand is the foundation of the paving - this will form a barrier to salts migrating to the pavers from below. Efflorescence can be removed by using either a dry brushing technique or wiping with a damp cloth making sure the salts are carried away from the pavers.

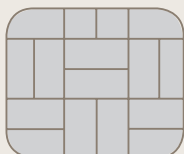
**Organic Growths - Fungus, Mould and Moss**

Porous masonry may provide an environment for organic growth when it is continuously moist, especially in light but shady conditions and when there are plenty of nutrients available. Clean off the growth as much as possible with a dry bristle brush. Organic growths should be treated with liquid chlorine, or common household chemicals such as Exitmould and WhiteKing or a proprietary weed killer. The solution should be left for several days and then brushed off with hot water and detergent. Repeat as necessary.

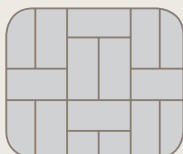


# How to Pave.

## A Step-by-Step Guide



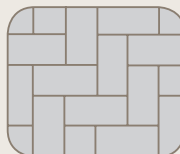
Basket



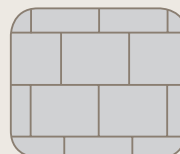
Weave Variation



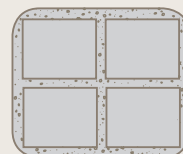
Running Bond



Herringbone 90°



Running Bond  
(Large Format)



Even Spaced  
(Large Format)

### Materials Needed

- Pavers
- Gravel Roadbase (1m<sup>3</sup> covers 10m<sup>2</sup> at a compacted depth of 100mm)
- Washed River Sand (1m<sup>3</sup> will cover 30m<sup>2</sup> at a depth of 30mm)
- Bagged paver jointing sand (1 bag will cover 8m<sup>2</sup>)
- String lines, tape measure and pegs
- Spirit level
- Two Screed Rails – two flat steel bars (Approx. 3m [L] x 50mm [W] x 2mm [H])
- 2-3m long concrete's screed
- Broom, rake and shovel
- Plate vibrator compactor
- Edge restraints (concrete or timber)
- Cutting Equipment – Paver Splitter/Masonry Brick

### Preparation

1. Select the desired finished surface level of your pavers. See diagram 1 above right.
2. Excavate the total area to the required depth – 140mm for pedestrian areas (compacted road base recommended) 190mm for driveways (concrete base recommended for heavy loads).
3. Be sure to allow for a slight fall for drainage. A fall of 25mm per metre should be satisfactory.
4. Place and screed gravel roadbase over area to approximately 100mm below the required finished height. (This allows 10mm for compaction).
5. Using the Vibrator Compactor, compact the roadbase.





Diagram1>

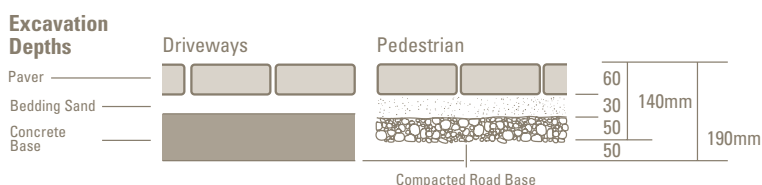
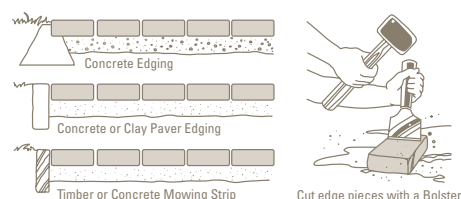


Diagram2>



Note: It is recommended that all large format pavers when used in vehicle areas are bedded in either a sand and cement mortar bed or fixed using a flexible adhesive.

### Bedding

1. Place washed river sand in piles over the area to be paved.
2. Using a rake or shovel, spread the sand evenly over the area.
3. Use a paver to determine your finished surface height, to ensure the correct depth of the bedding sand is used. This becomes the measure for your screeding rails. Repeat so that you have 2 paver pads at least 2 metres apart. See Figure A.
4. Using your screed, level an area between the two pavers so that you can lay your screeding rails on the level surface.
5. Place the screeding board onto the screeding rails and pull towards you, ensuring that you maintain an even level. See Figure B.
6. Once the area has been screeded, carefully remove the screeding rails and smooth out any damaged surface areas with a hand float.

### Laying Pavers

1. Select your laying pattern and commence laying, making sure that you work outwards from a corner. Where necessary use string lines to make a corner.
2. To ensure that your paving lines stay straight, both vertical and horizontal string lines should be used. See Figure C.
3. As you lay your pavers, make sure that a gap is placed between them (2-3mm for small format pavers and 4-6mm for large format pavers). This will prevent any paver damage caused by pavers rubbing against each other.

### Edge Restraints

1. Edge restraints are important as they will prevent pavers from moving out of place. See diagram 2 above.
2. The edge restraint must first be in place prior to compaction taking place.

### Compacting the Pavers

1. Prior to compacting, sweep dry paver joint sand over the paved area using a soft bristled brush. Make sure that you completely fill the jointing gaps. See Figure D.
2. Leave a small excess of sand on the surface of the pavers for the compactor to vibrate further into the joints.
3. Before compacting, make sure that a piece of carpet or rubber mat is under the compactor to prevent the pavers being scratched or damaged. See Figure E.
4. 3-4 passes with the compactor should be satisfactory. After the initial pass, respread the jointing sand over the pavers to ensure full joint penetration. Following the final pass, top up any joints with sand where necessary.
5. Hose off excess sand for a clean finish. See Figure F.





## Products and brands available from Brickworks Building Products™

### **BRICKWORKS** BUILDING PRODUCTS

Brickworks Building Products™ is one of Australia's largest and most diverse building material manufacturers. Under the Brickworks Building Products™ umbrella are some of Australia's best known building materials brands.

Our products include bricks, pavers, masonry blocks, retaining wall systems, precast concrete panels, concrete and terracotta roof tiles, timber products and specialised façade systems.

With a broad product portfolio and manufacturing and sales facilities across Australia, Brickworks Building Products™ is uniquely placed to service the demands of the building industry.

With over 1200 staff across Australia and New Zealand, we pride ourselves on our commitment to product and service excellence and our leadership position.

### **australbricks®** since 1908

Founded in 1908, Austral Bricks® is Australia's largest, best-known and most efficient clay brick and paver manufacturer.

Austral Bricks® add distinct style to any type of home. Their natural colours and textures enable you to create striking façade contrasts or more traditional neutral colour tones. By investing in new technology Austral Bricks® now produce bricks with a variety of surface finishes, exciting colours and different sizes.

The result is a wonderful range of bricks for you to build a stylish, contemporary home.



### **BOWRAL BRICKS**

When Bowral Bricks began production in 1922, a teenage Don Bradman was still scoring runs for the local side. Today their distinctive dry-pressed bricks are highly valued by discerning architects and builders across the country. The unique combination of traditional craftsmanship and modern technology will ensure that the Bowral Bricks brand will remain the benchmark for brick excellence for many years to come.

### **nubrik™** authentic brickwork

With a heritage reaching back to 1862, Nubrik™ premium-quality bricks are still moulded the traditional way on century-old presses. Their time-honoured expression of authenticity and elegance is acknowledged by architects, builders and discerning homebuyers who also value their rich colour blends, solidity and crisply-defined edges.



Since 1853, Daniel Robertson® has helped build Australia with building products that combine craftsmanship with architectural excellence. In a world of mass production, where qualities are constantly compromised, Daniel Robertson® premium-quality clay bricks are highly prized for their unique character, earthy appeal and individual charm.





^ Bristle Roofing™



^ Auswest Timbers®



^ Austral Façades®

## **nzbrick** DISTRIBUTORS

Backed by a proud history of more than a century of brickmaking experience, NZ Brick Distributors™ offers New Zealand's most comprehensive range of high quality bricks and pavers in an unmatched palette of colours, textures and sizes, backed by a nation-wide sales and distribution network.

## **australmasonry**®

Austral Masonry™ is a leading manufacturer and supplier of concrete masonry products focused on providing functional but stylish solutions to the civil, residential, commercial and industrial building and construction markets.

Our passion is to create products to meet the technical and functional demands of the building industry, while also delivering architecturally striking and fashionable finishes to completed building projects. Our range of products includes standard grey concrete blocks, coloured architectural concrete blocks with a range of different finishes and a comprehensive range of retaining walls, pavers and garden edging.

## **australprecast**®

In just a few years, Austral Precast® has become Australia's premier supplier of high-quality, innovative and customisable precast concrete product solutions. Using state-of-the-art technology, production techniques and systems, our precast division produces a diversified range of wall, floor, column, and client-specific precast solutions. To meet the construction industry's ever-increasing demands, the company operates from five plants located along the eastern seaboard and in Western Australia.

## **bristileroofting**

For almost a century, Bristile Roofing™ has delivered stylish and innovative roofing products for Australian homes. Bristile is now one of Australia's largest manufacturers and installers of quality roof tiles and the exclusive Australian distributor of La Escandella premium-quality terracotta roof tiles from Spain. Product innovation, manufacturing expertise and first-class service guarantee a strong, low maintenance roofing solution that will look great and perform superbly for generations.

## **auswesttimbers**®

From production facilities in Western Australia, Victoria and the ACT, Auswest Timbers® manufactures a diverse range of timber products. Jarrah, karri and chestnut timbers are processed into a range of decorative, seasoned products for furniture and joinery, flooring, decking, staircase components, veneers and fence screening. Green structural timbers are also processed for mine, wharf and rail track construction, as well as for floor joists, roofing timbers and roof tile battens.

## **australfaçades**®

Façade systems are a cost-and time-efficient approach to cladding commercial and upscale residential buildings. The Terraçade™ system, developed in Australia by Brickworks Building Products™, combines the visual appeal and colourfastness of terracotta with the low maintenance and functional efficiency demanded in today's competitive market.



## Brickworks Design Centres Sales and Selection

### Austral Bricks Display Centres - QLD

#### Rochedale

105 Gardner Rd  
Rochedale QLD 4123

#### Cairns

8 Palmer Street  
Portsmith QLD 4870

#### Toowoomba

29 Mort St,  
Toowoomba QLD 4350

#### Townsville

2 Blakey Street  
Garbutt QLD 4814

### Austral Bricks Resellers

#### Armidale

262 Mann St,  
Armidale, NSW 2350

#### Ballina

Racecourse Rd,  
Ballina, NSW 2478

#### Bundaberg

86 Enterprise St,  
Bundaberg, QLD 4670

#### Byron Bay

10 Grevillea St,  
Byron Bay, NSW 2481

#### Casino

14 Casino Dr,  
Casino, NSW 2470

#### Chinderah

24 Ozone St,  
Chinderah, NSW 2487

#### Caloundra

14 Daniel St,  
Caloundra, QLD 4551

#### Gladstone

2 Hilliard St,  
Gladstone, QLD 4680

#### Grafton

373 Fry St,  
Grafton, NSW 2460

#### Hervey Bay

33 Old Maryborough Rd,  
Hervey Bay, QLD 4655

#### Inverell

17/21 Brissett St,  
Inverell, NSW 2360

#### Kingaroy

107 River Rd,  
Kingaroy, QLD 4610

#### Labrador

Cnr Pine Ridge  
& Lensgate Rd,  
Labrador, QLD 4215

#### Mackay

6 Tracey Street  
Mackay, QLD 4740

#### Morayfield

286 Oakey Flat Rd,  
Morayfield, QLD 2484

#### Murwillumbah

28-32 Buchanan St,  
Murwillumbah, NSW 4506

#### Tenterfield

1 Petrie St,  
Tenterfield, NSW 2372

#### Tweed Heads

35 Rivendell Dr,  
Tweed Heads, NSW 2486

#### Warana

200 Nicklin Way,  
Warana, QLD 4575

#### Yeppoon

34-38 McBean St,  
Yeppoon, QLD 4703

### Trading hours

For trading hours please visit [www.australbricks.com.au](http://www.australbricks.com.au)

## Austral Bricks Head Office Queensland

105 Gardner Road  
Rochedale QLD 4123

Tel +61 7 3347 2111

Fax +61 7 3343 2899

[infoqld@australbricks.com.au](mailto:infoqld@australbricks.com.au)



13-BRICK (132 742)

[www.australbricks.com.au](http://www.australbricks.com.au)



a member of



Proud supporters



The range of building products from  
**BRICKWORKS**  
BUILDING PRODUCTS



BOWRAL BRICKS