

# BRICK FACINGS

*style with substance*



# BRICK FACINGS

*style that lasts forever*

Recognised as one of Australia's leading manufacturers of quality clay building products, Austral Bricks continues to build its reputation for delivering top quality products.

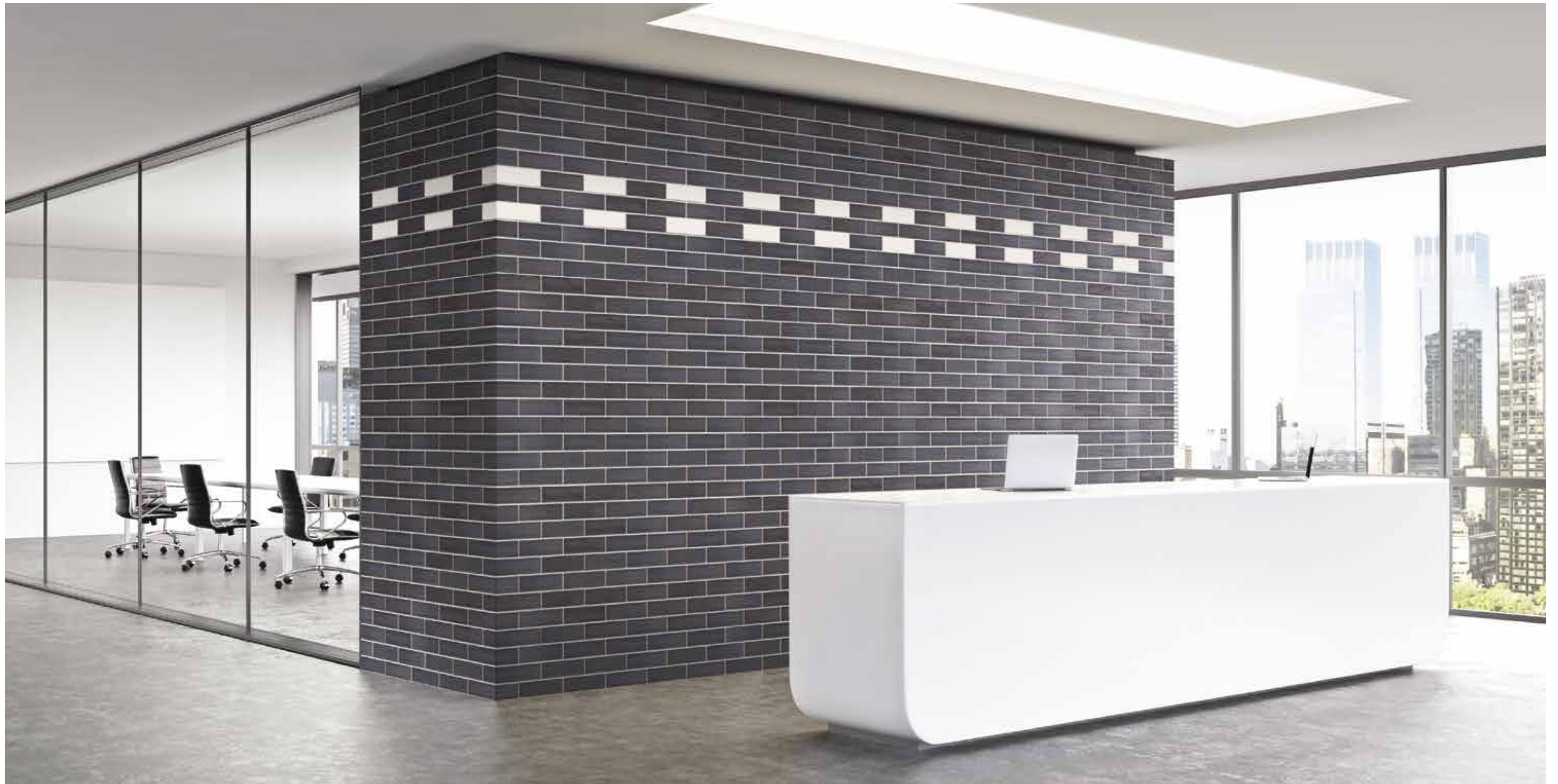
We lead through style and product innovation, creating materials for beautiful environments, not just bricks. We understand that building a home is a unique personal expression and that the products you choose make a lasting statement about your style.

That's why our products offer beauty and style your way.



*This page: La Paloma Azul, Glazed White and Glazed Black  
Cover: Bowral Blue*





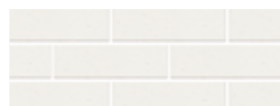
La Paloma Gaudi and Miro



San Selmo Original Red



San Selmo Limewash



La Paloma Miro



La Paloma Gaudi



La Paloma Azul



La Paloma Glazed White

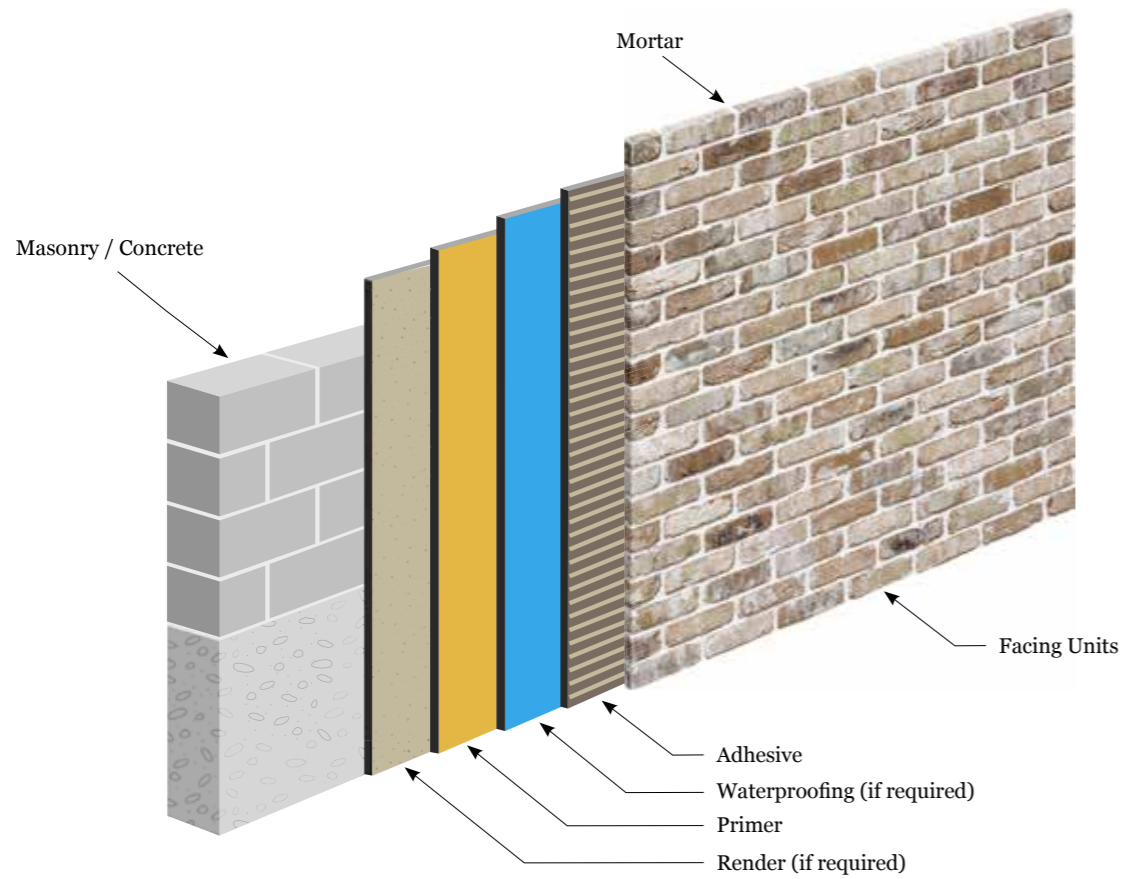


La Paloma Glazed Black



# BRICK FACING INSTALLATION GUIDE

## Typical Installation Details



### Preparation

- The back of the facing should be clean and free from loose particles with no forms of contamination evident
- The new or existing concrete substrate shall be fully dry and cured, cleaned, free from grease, oil, dirt, curing compounds, form release agents, loosely bound materials and all other surface contaminants by high pressure detergent water blasting followed by a thorough rinse with clean high pressure water to remove all signs of detergent. Allow the concrete to dry thoroughly prior to the commencement of tiling.
- The new or existing concrete blockwork must be clean and free from loose materials, dirt, oil, grease and all forms of contamination

- Remove any concrete sealers or curing compounds by mechanical means (eg: scabbing machine) from the surface

### Limitations

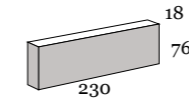
- Adhesive Fixing can only be used up to 3.5m in height, internally or externally
- Mechanical Fixing must be used where brick facings exceed 3.5m in height, internally or externally

*Ardex Australia Pty Ltd products are recommended for installation up to 3.5m*

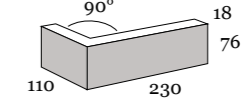
# BRICK FACING INSTALLATION GUIDE

## Dimensions

**Facing Unit** – 230 L x 76 H x 18mm Thick

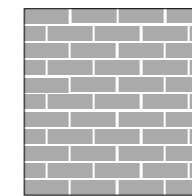


**Corner Unit** – 230 L x 76 H x 110 W x 18mm Thick

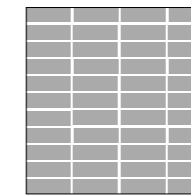


## Laying Patterns

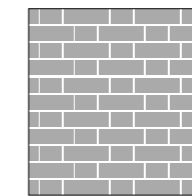
A bond refers to the pattern in which bricks are laid. The most common bond used is Stretcher Bond.



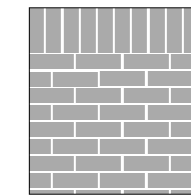
Stretcher Bond



Stack Bond



Flemish Bond



Soldier Course with Flemish Bond

## Common Mortar Joints



Shallow Ironed (Rolled)



Deep Ironed (Rolled)



Struck Flush



Weather Struck



Raked

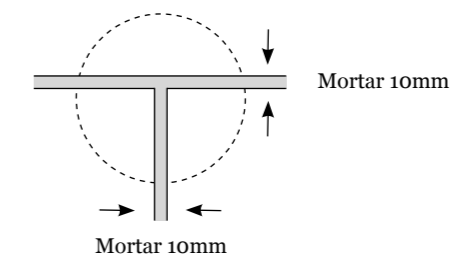


Beaded Pointing



Tuck Pointing

## Mortar Thickness



# BRICKWORKS

— BUILDING PRODUCTS —

[brickworksbuildingproducts.com.au](http://brickworksbuildingproducts.com.au) | 13-brick (13 2742)

follow brickworks building products on



## DESIGN STUDIOS

### Sydney CBD

2 Barrack Street  
Sydney  
NSW 2000

### Melbourne

490 Swan Street  
Richmond  
VIC 3121

### Adelaide

Ground Floor  
70 Hindmarsh Square  
Adelaide  
SA 5000

### Brisbane

27 James Street  
Fortitude Valley  
QLD 4006

### Perth

67 King Street  
Perth  
WA 6000

### Hobart

9 Franklin Wharf  
Hobart  
TAS 7000

Austral Bricks is part of the Brickworks Group

The product images in our brochures give a general indication of colour for your preliminary selection.  
We also recommend you view current product samples before making your final decision.

Partners in Design 07/2018